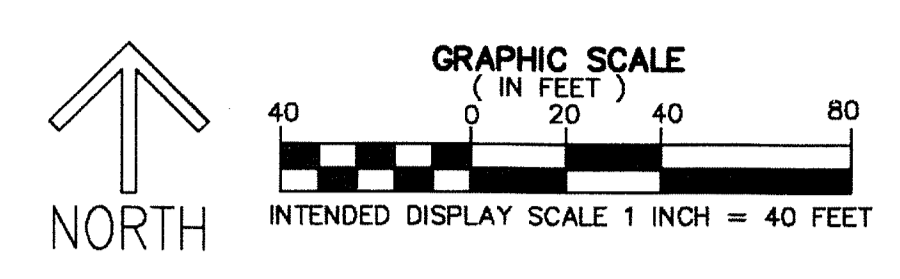


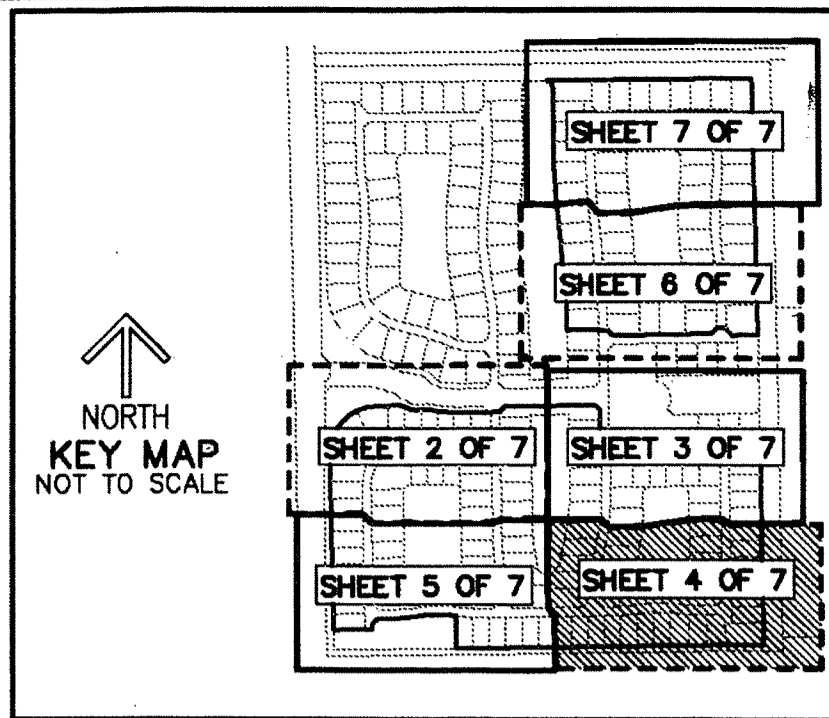
- LEGEND/ABBREVIATIONS**
- PRM - INDICATES SET PERMANENT REFERENCE MONUMENT
4"x4"x24" CONCRETE MONUMENT WITH DISK
STAMPED "PRM LB#3591", UNLESS OTHERWISE NOTED
 - - INDICATES PERMANENT CONTROL POINT
 - ℄ - CENTERLINE
 - Δ - CENTRAL ANGLE
 - R - RADIUS
 - L - ARC LENGTH
 - AC - ACRES
 - CB - CHORD BEARING
 - CD - CHORD DISTANCE
 - DE - DRAINAGE EASEMENT
 - PBCUE - PALM BEACH COUNTY UTILITY EASEMENT
 - FPL - FLORIDA POWER & LIGHT CO.
 - LMAE - LAKE MAINTENANCE ACCESS EASEMENT
 - LME - LAKE MAINTENANCE EASEMENT
 - L.W.D. - LAKE WORTH DRAINAGE DISTRICT
 - N.T.S. - NOT TO SCALE
 - O.R.B. - OFFICIAL RECORD BOOK
 - (R) - RADIAL LINE
 - SF - SQUARE FEET
 - SWE - SIDEWALK EASEMENT
 - UE - UTILITY EASEMENT
 - (P) - DENOTES ROYAL PALM POLO
AS RECORDED IN PLAT BOOK 117, PAGES 194-200
PALM BEACH COUNTY RECORDS



ROYAL PALM POLO PLAT TWO

A PLANNED UNIT DEVELOPMENT
BEING A REPLAT OF A PORTION OF PARCEL A, TOGETHER WITH ALL OF PARCEL B, PARCEL C, TRACT L3, LOTS 161 AND 162 OF BLOCK 4,
ROYAL PALM POLO, AS RECORDED IN PLAT BOOK 117, PAGES 194 THROUGH 200
OF THE PUBLIC RECORDS OF PALM BEACH COUNTY, FLORIDA,
LYING IN THE SOUTHEAST ONE-QUARTER OF SECTION 34, TOWNSHIP 46 SOUTH, RANGE 42 EAST,
CITY OF BOCA RATON, PALM BEACH COUNTY, FLORIDA.

THIS INSTRUMENT PREPARED BY
DAVID P. LINDLEY
OF
CAULFIELD and WHEELER, INC.
SURVEYORS - ENGINEERS - PLANNERS
7900 GLADES ROAD, SUITE 100
BOCA RATON, FLORIDA 33434 - (561)392-1991

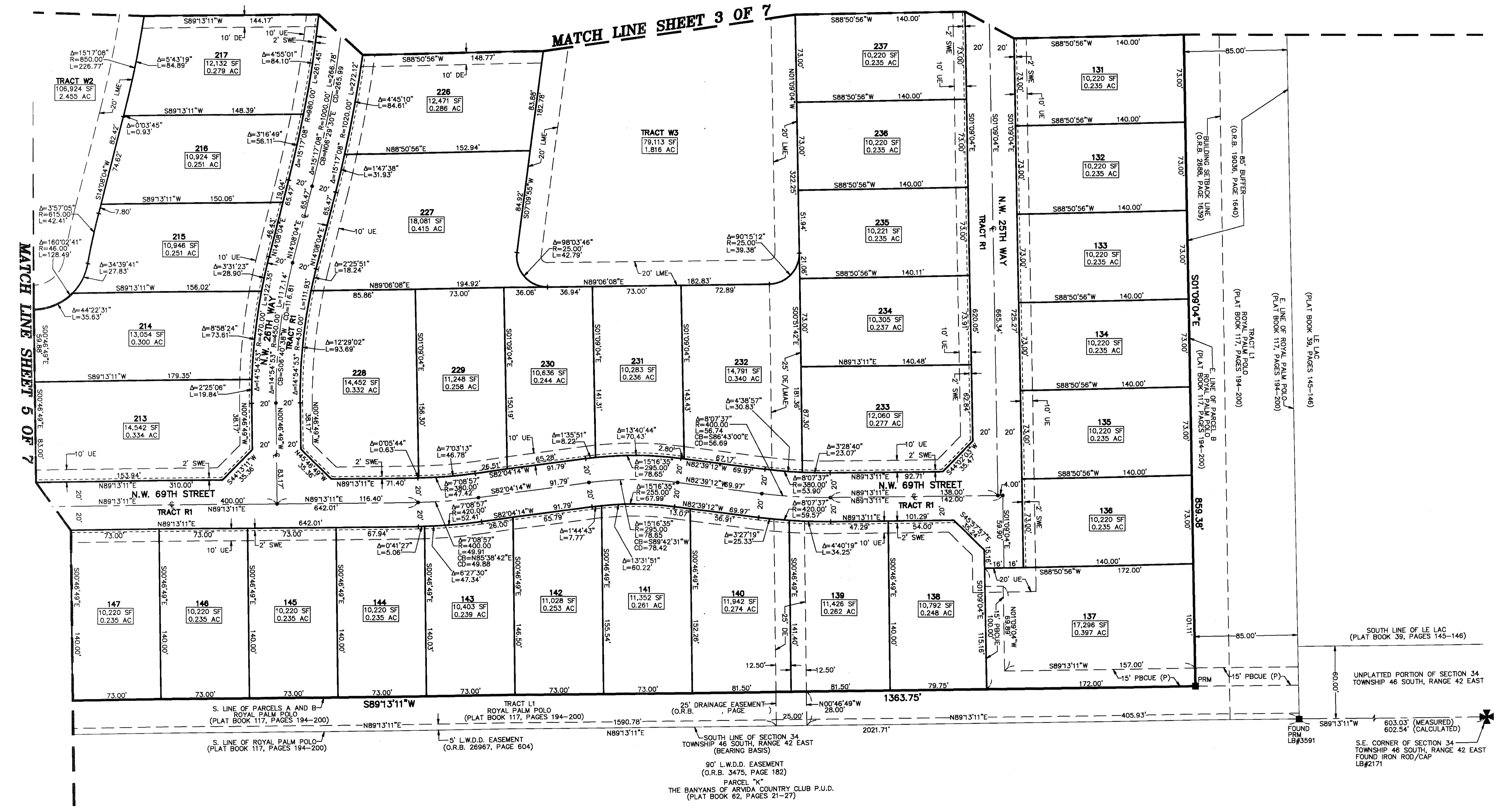


108

STATE OF FLORIDA
COUNTY OF PALM BEACH
THIS PLAT WAS FILED FOR
RECORD AT _____ M.
THIS _____ DAY OF _____
A.D. 20____ AND DULY RECORDED
IN PLAT BOOK _____ ON
PAGES _____ AND _____
SHARON R. BOCK
CLERK AND COMPTROLLER

BY: _____
DEPUTY CLERK

SHEET 4 OF 7



SOUTH LINE OF LE LAC
(PLAT BOOK 39, PAGES 145-146)

UNPLATTED PORTION OF SECTION 34
TOWNSHIP 46 SOUTH, RANGE 42 EAST

FOUND
PRM
LB#3591

603.03' (MEASURED)
602.54' (CALCULATED)

S.E. CORNER OF SECTION 34
TOWNSHIP 46 SOUTH, RANGE 42 EAST
FOUND IRON ROD/CAP
LB#2171