

LEGEND:

□ = DENOTES PERMANENT REFERENCE MONUMENT (P.R.M.) SET 4"x4" CONCRETE MONUMENT WITH DISK STAMPED "PRM LB4431" UNLESS OTHERWISE NOTED

ABBREVIATIONS:

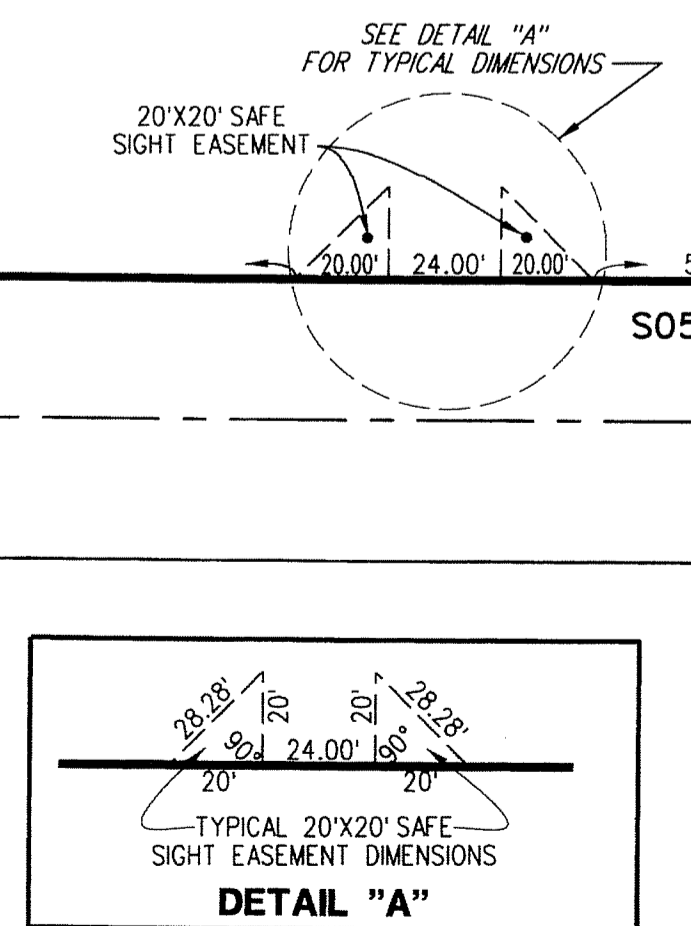
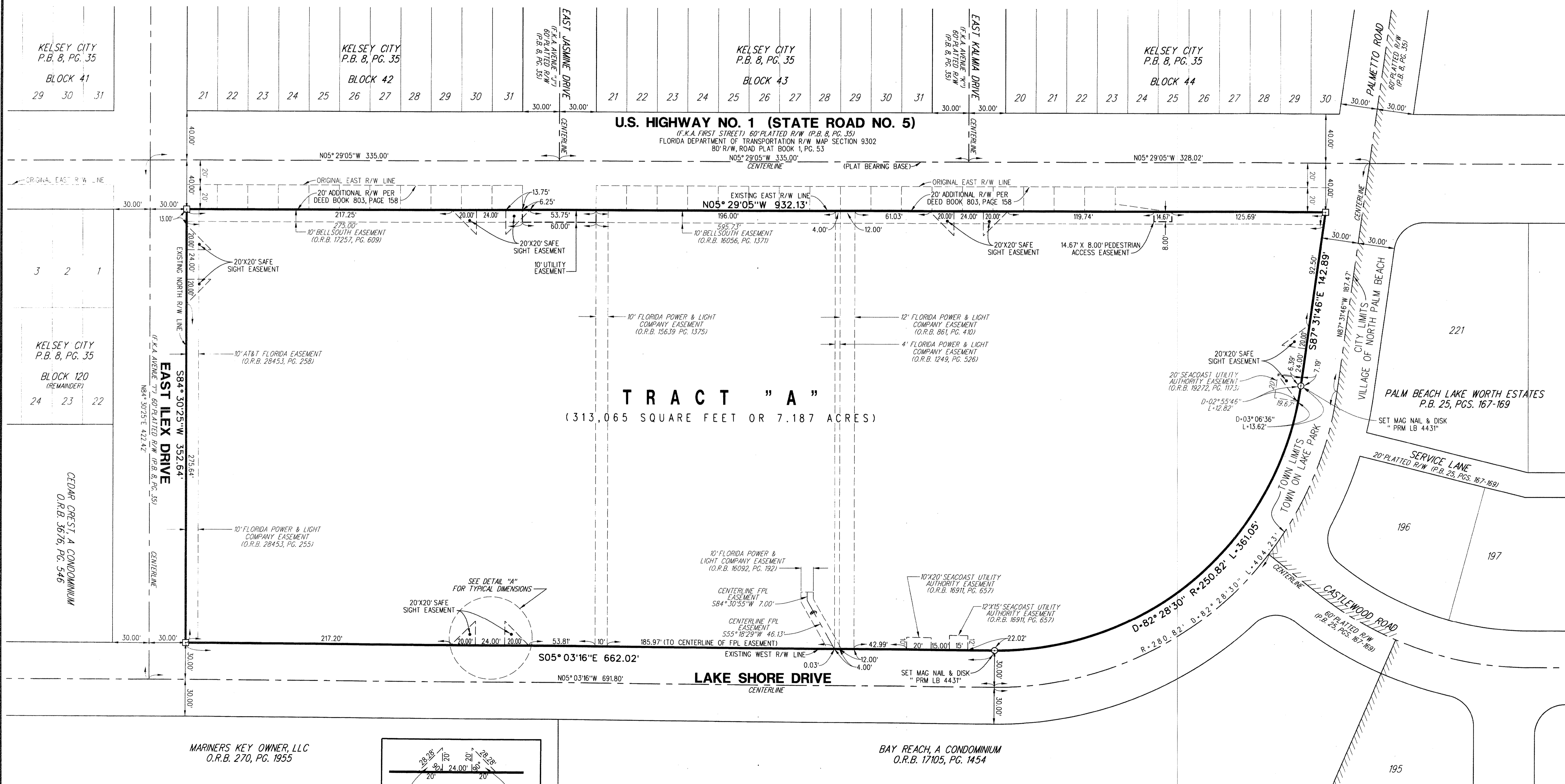
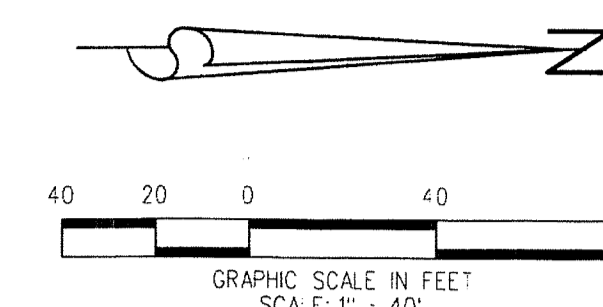
CB = CHORD BEARING
 CL = CHORD LENGTH
 D = DELTA
 F.K.A. = FORMERLY KNOWN AS
 L = ARC LENGTH
 L.A.E. = LIMITED ACCESS EASEMENT
 O.R.B. = OFFICIAL RECORD BOOK
 N.E. = NORTHEAST
 N.W. = NORTHWEST
 P.B. = PLAT BOOK
 PG. = PAGE
 P.R.M. = PERMANENT REFERENCE MONUMENT
 P.S.M. = PROFESSIONAL SURVEYOR AND MAPPER
 R = RADIUS
 S.E. = SOUTHEAST
 S.S.E. = SAFE SIGHT EASEMENT
 S.W. = SOUTHWEST
 U.E. = UTILITY EASEMENT

STEWART TOYOTA, PLAT NO. 2

BEING A REPLAT OF STEWART TOYOTA, AS RECORDED IN PLAT BOOK 100, PAGES 148 AND 149, AND A REPLAT OF PORTIONS OF LOTS 1 THROUGH 11, BLOCK 121, ALL OF LOTS 12 THROUGH 22, BLOCK 121, AND A PORTION OF AVENUE J (NOW KNOWN AS JASMINE STREET), AS SHOWN ON KELSEY CITY, AS RECORDED IN PLAT BOOK 8, PAGES 15 AND 35, PUBLIC RECORDS OF PALM BEACH COUNTY, FLORIDA LYING IN SECTION 21, TOWNSHIP 42 SOUTH, RANGE 43 EAST

TOWN OF LAKE PARK, PALM BEACH COUNTY, FLORIDA

OCTOBER 2016 SHEET 2 OF 2



MARINERS KEY OWNER, LLC
 O.R.B. 270, PG. 1955

BAY REACH, A CONDOMINIUM
 O.R.B. 17105, PG. 1454

LIDBERG LAND SURVEYING, INC.
 LB4431 675 West Indiantown Road, Suite 200,
 Jupiter, Florida 33458 TEL. 561-746-8454

CAD: K:\JUST \ 214243 \ 08-35 \ 14-032-306 \ 14-032-306.DGN			
REF.			
F.L.D.		FB.	PG.
OFF.	CASASUS		JOB 14-032-306
CKD.	D.C.L.	SHEET 2 OF 2	DATE OCTOBER 2016
		DWG.	D14-032P