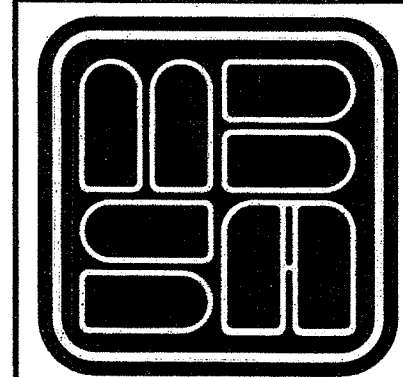
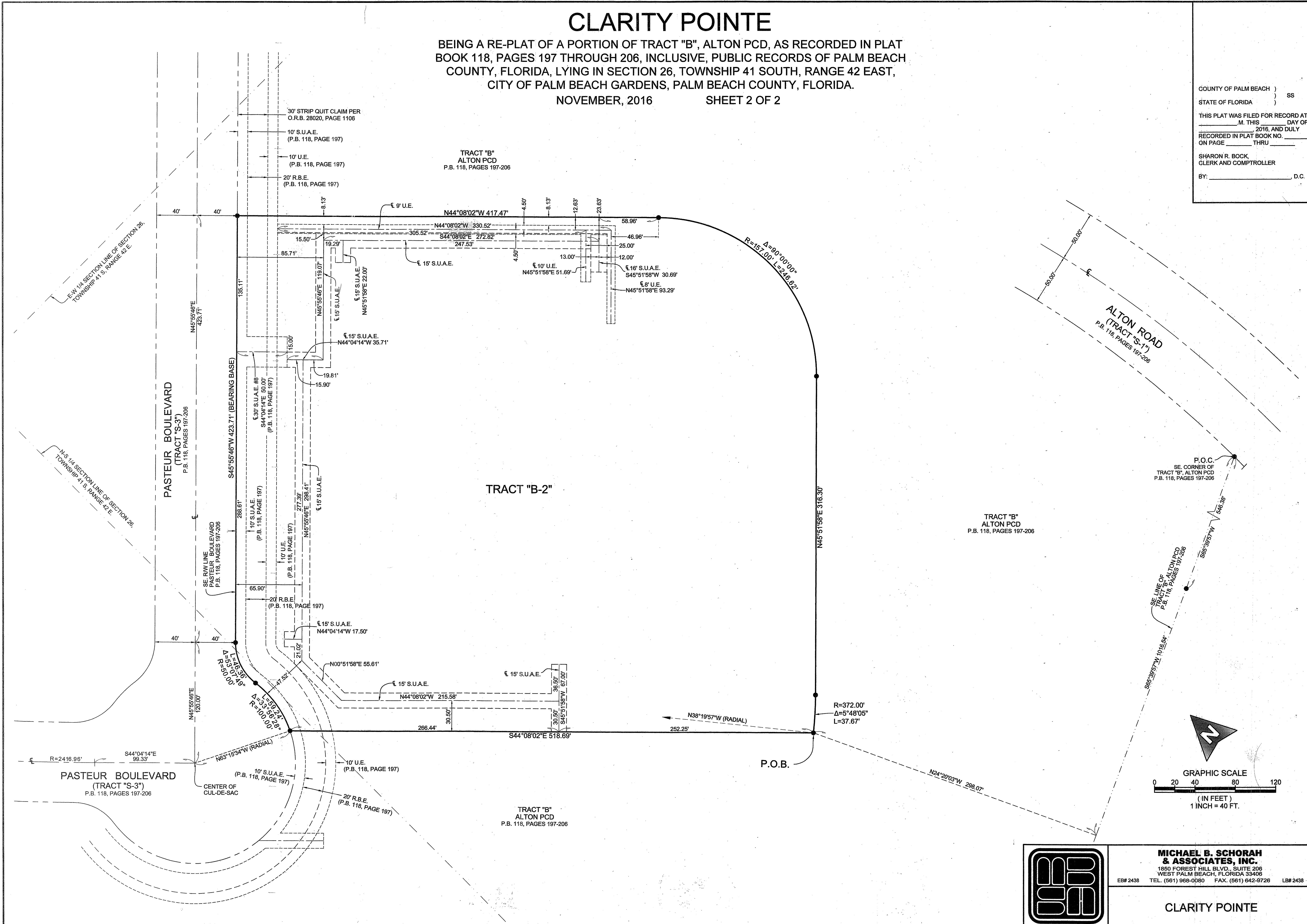


CLARITY POINTE

BEING A RE-PLAT OF A PORTION OF TRACT "B", ALTON PCD, AS RECORDED IN PLAT BOOK 118, PAGES 197 THROUGH 206, INCLUSIVE, PUBLIC RECORDS OF PALM BEACH COUNTY, FLORIDA, LYING IN SECTION 26, TOWNSHIP 41 SOUTH, RANGE 42 EAST, CITY OF PALM BEACH GARDENS, PALM BEACH COUNTY, FLORIDA.

NOVEMBER, 2016 SHEET 2 OF 2

COUNTY OF PALM BEACH)
 STATE OF FLORIDA) SS
 THIS PLAT WAS FILED FOR RECORD AT)
 M. THIS) DAY OF)
 2016, AND DULY)
 RECORDED IN PLAT BOOK NO.)
 ON PAGE) THRU)
 SHARON R. BOCK,
 CLERK AND COMPTROLLER
 BY: _____, D.C.



MICHAEL B. SCHORAH & ASSOCIATES, INC.
 1850 FOREST HILL BLVD., SUITE 206
 WEST PALM BEACH, FLORIDA 33408
 EB# 2438 TEL. (561) 968-0080 FAX. (561) 642-9726 LB# 2438

CLARITY POINTE