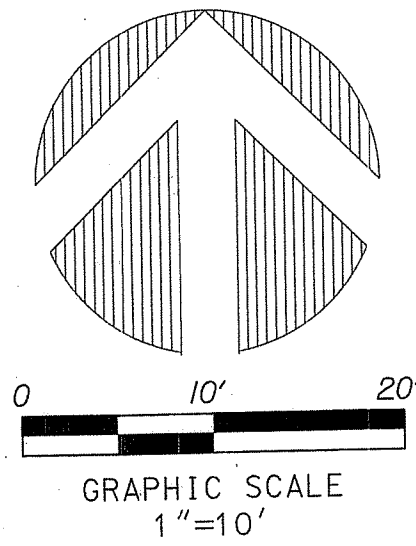


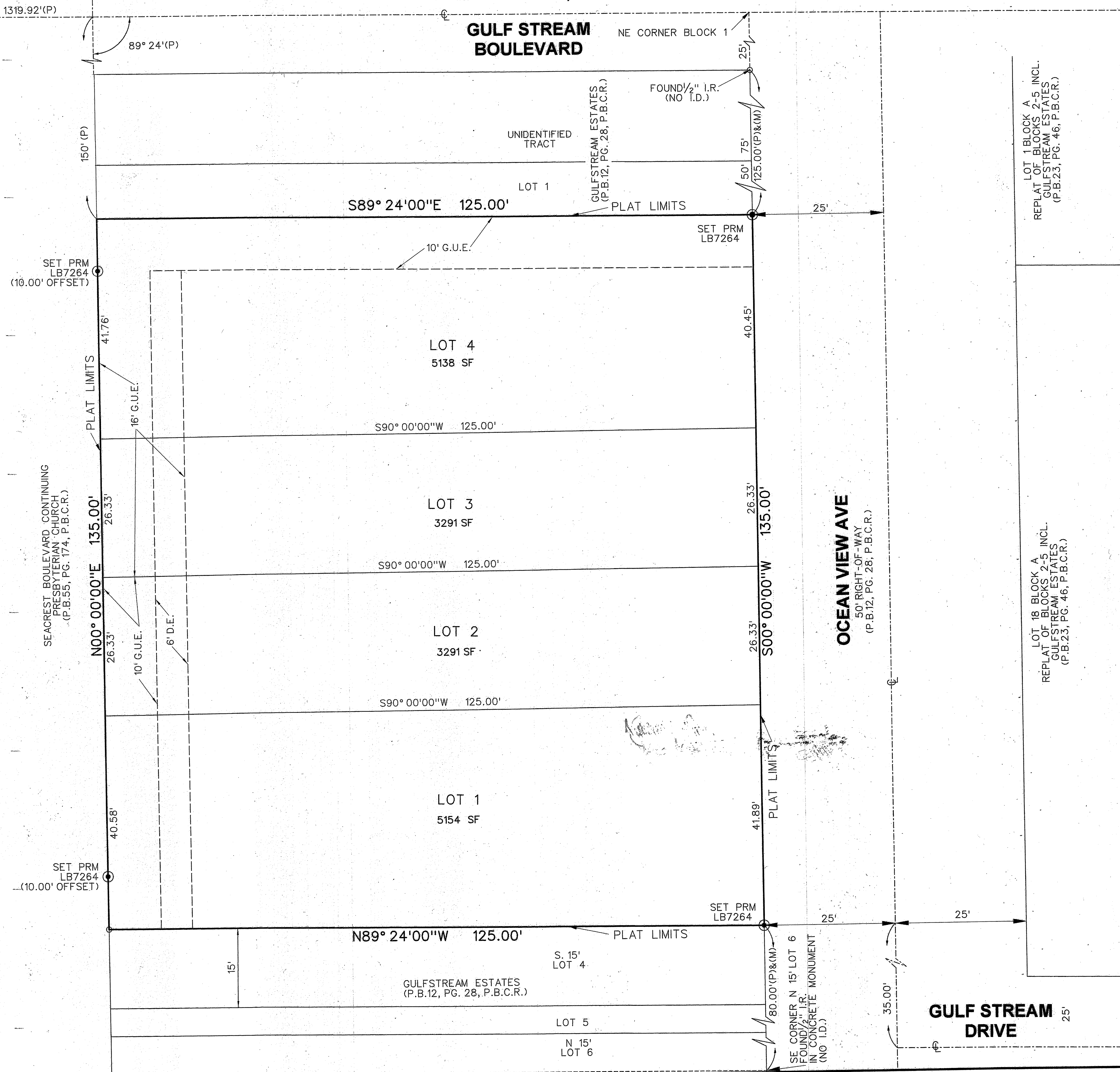
PERIMETER
SURVEYING & MAPPING
 Certificate of Authorization No. LB7264
 Prepared by Jeff S. Hoodapp, P.S.M.
 947 Clint Moore Road
 Boca Raton, Florida 33487
 Tel: (561) 241-9988
 Fax: (561) 241-5182



OCEANVIEW TOWNHOMES

A REPLAT OF ALL OF LOTS 2 AND 3 AND A PORTION OF LOT 4, BLOCK 1, "GULFSTREAM ESTATES", ACCORDING TO THE PLAT THEREOF, AS RECORDED IN PLAT BOOK 12 AT PAGE 28 OF THE PUBLIC RECORDS OF PALM BEACH COUNTY, FLORIDA, IN SECTION 4, TOWNSHIP 46 SOUTH, RANGE 43 EAST, CITY OF DELRAY BEACH, PALM BEACH COUNTY, FLORIDA.
 SEPTEMBER, 2016

NW CORNER SECTION 4-46-43 (NOT FOUND)
 3148.8' (P)
 89° 54' (P)
 W LINE SECTION 4-46-43



LEGEND
 ☉ = CENTERLINE
 ● = PRM - SET PERMANENT REFERENCE MONUMENT LB7264, UNLESS NOTED OTHERWISE

ABBREVIATIONS:
 CONC. = CONCRETE
 COR. = CORNER
 D. = DELTA (CENTRAL ANGLE)
 D.E. = DRAINAGE EASEMENT
 DIA. = DIAMETER
 G.U.E. = GENERAL UTILITY EASEMENT
 I.P. = IRON PIPE
 IRC = IRON ROD & CAP
 L = ARC LENGTH
 L.B. = LICENSED BUSINESS
 L.S. = LICENSED SURVEYOR
 MON. = MONUMENT
 N.R. = NON-RADIAL
 O.R.B. = OFFICIAL RECORDS BOOK
 (P) = RECORD PLAT DIMENSION
 P.A.E. = PUBLIC ACCESS EASEMENT
 P.B.C.R. = PALM BEACH COUNTY RECORDS
 P.B. = PLAT BOOK
 PG. = PAGE
 P.C.P. = PERMANENT CONTROL POINT
 P.O.B. = POINT OF BEGINNING
 P.O.C. = POINT OF COMMENCEMENT
 P.R.M. = PERMANENT REFERENCE MONUMENT
 P.S.M. = PROFESSIONAL SURVEYOR & MAPPER
 R = RADIUS
 R/W = RIGHT-OF-WAY
 S.E. = SEWER EASEMENT
 SEC. = SECTION
 S.F. = SQUARE FEET
 U.E. = UTILITY EASEMENT
 W.E. = WATER EASEMENT

LOT 1 BLOCK A
 REPLAT OF BLOCKS 2-5 INCL.
 GULFSTREAM ESTATES
 (P.B.23, PG. 46, P.B.C.R.)

LOT 18 BLOCK A
 REPLAT OF BLOCKS 2-5 INCL.
 GULFSTREAM ESTATES
 (P.B.23, PG. 46, P.B.C.R.)

192

SHEET 2 OF 2