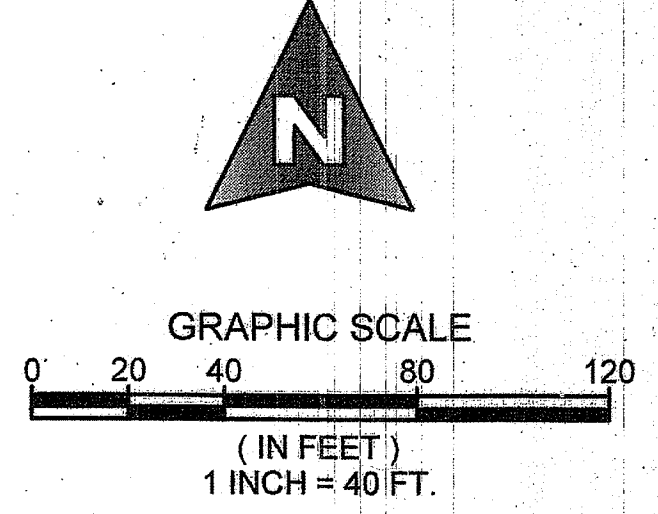
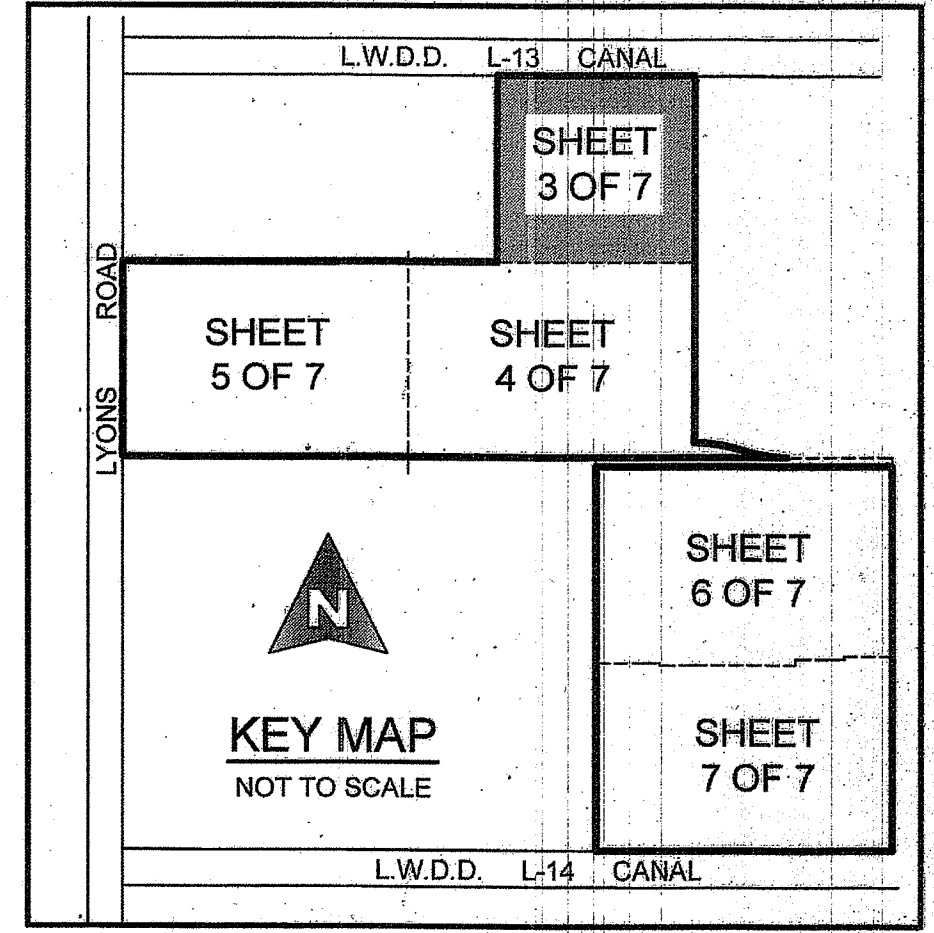
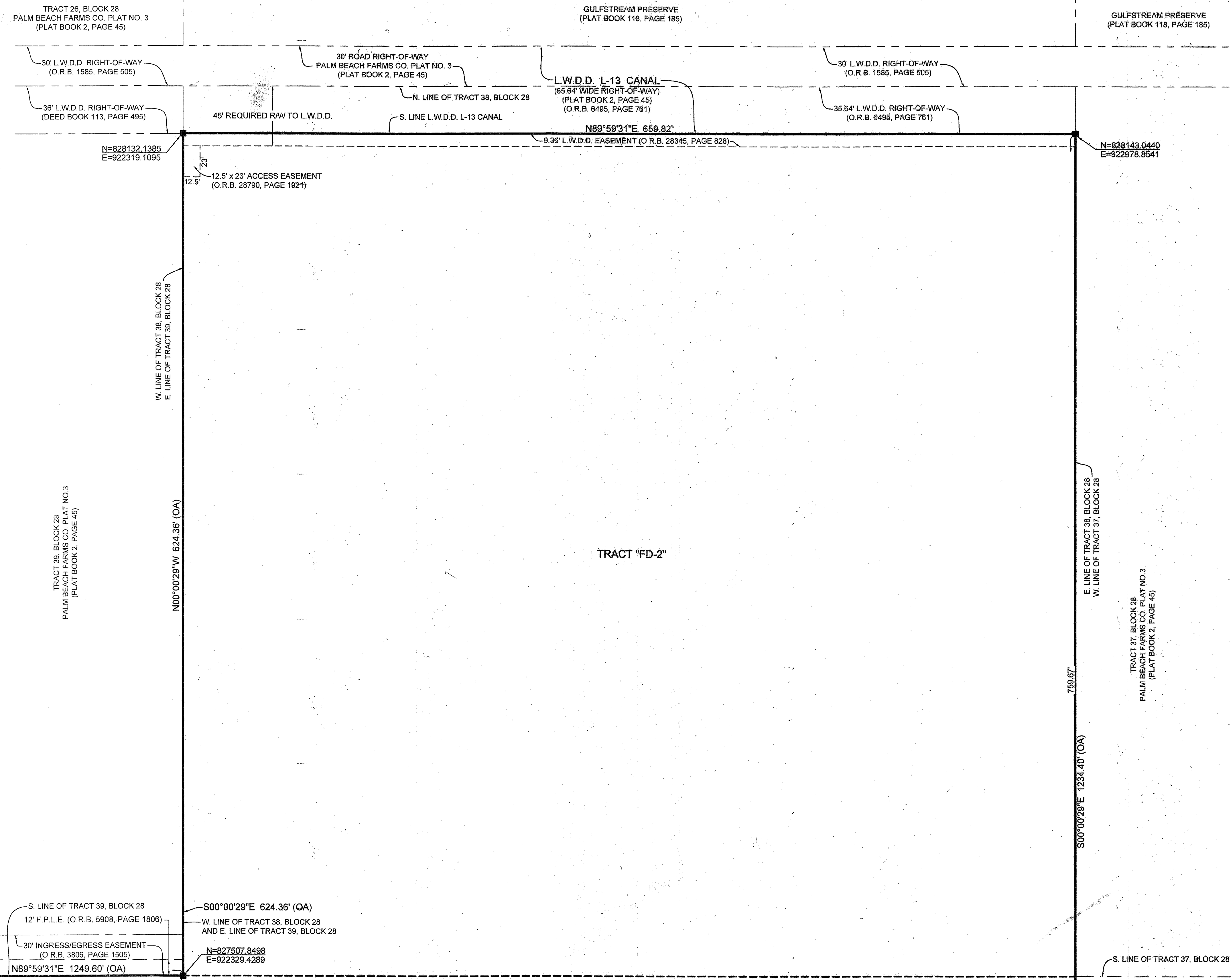


ANDALUCIA PUD PLAT 1

LYING IN SECTIONS 29, 30 AND 32, TOWNSHIP 44 SOUTH, RANGE 42 EAST, PALM BEACH COUNTY, FLORIDA,
BEING A REPLAT OF ALL OF TRACTS 42, 43 AND 53 AND A PORTION OF TRACTS 38, 41, 44, 54, 59 AND 60, BLOCK 28, THE PALM BEACH FARMS COMPANY
PLAT NO. 3 AS RECORDED IN PLAT BOOK 2, PAGES 45 THROUGH 54, INCLUSIVE, PUBLIC RECORDS OF PALM BEACH COUNTY, FLORIDA.

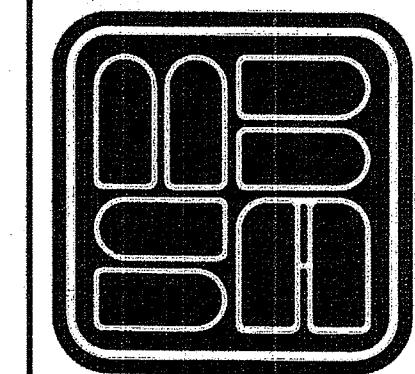
195

COUNTY OF PALM BEACH)
STATE OF FLORIDA) SS
THIS PLAT WAS FILED FOR RECORD AT)
M. THIS DAY OF)
2017, AND DULY)
RECORDED IN PLAT BOOK NO.)
ON PAGE THRU)
SHARON R. BOCK)
CLERK AND COMPTROLLER)
BY: D.C.



COORDINATE NOTE:
 STATE PLANE COORDINATES SHOWN ARE GRID DATUM, NAD 83 1990
 ADJUSTMENT, FLORIDA EAST ZONE, COORDINATE SYSTEM 1983 STATE
 PLANE, TRANSVERSE MERCATOR PROJECTION
 LINEAR UNIT = US SURVEY FEET
 ALL DISTANCES ARE GROUND
 SCALE FACTOR = 1.000022328
 GROUND DISTANCE X SCALE FACTOR = GRID DISTANCE
 S 00°00'29\"/>

SHEET 3 OF 7



MICHAEL B. SCHORAH & ASSOCIATES, INC.
 1850 FOREST HILL BLVD., SUITE 206
 WEST PALM BEACH, FLORIDA 33409
 EB# 2438 TEL. (561) 968-0080 FAX. (561) 942-0726 LB# 2438

ANDALUCIA PUD PLAT 1

MATCH TO SHEET 4