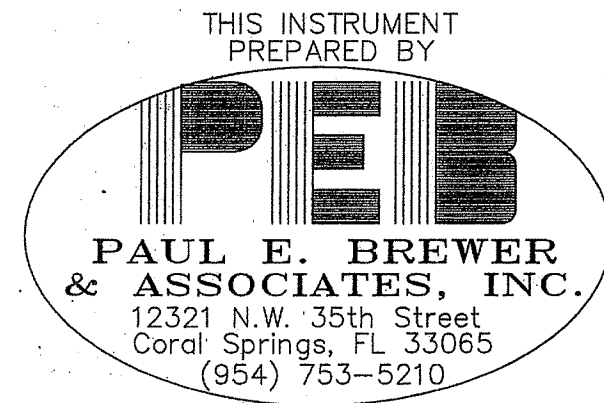


MANGONE AND SPIRK SELF-STORAGE M.U.P.D.

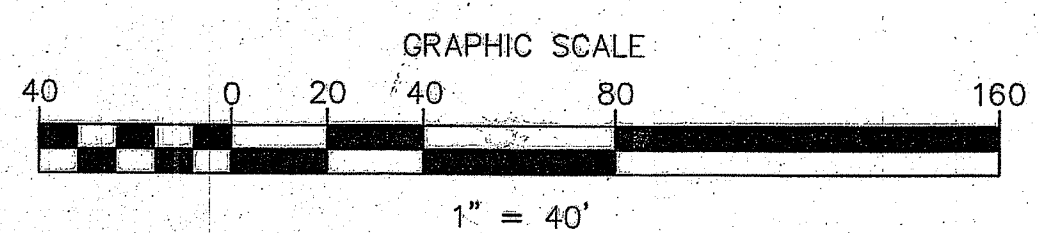
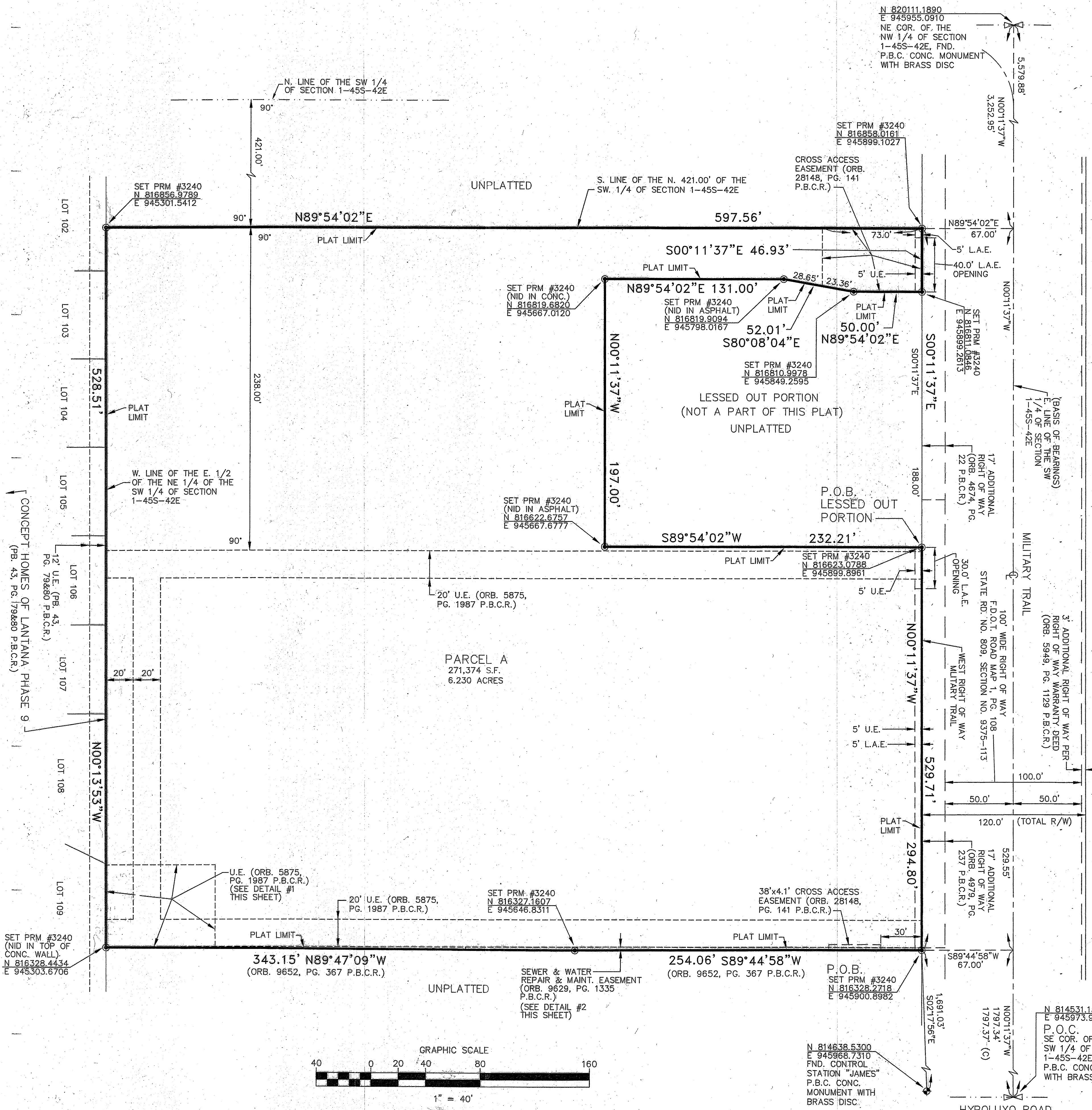
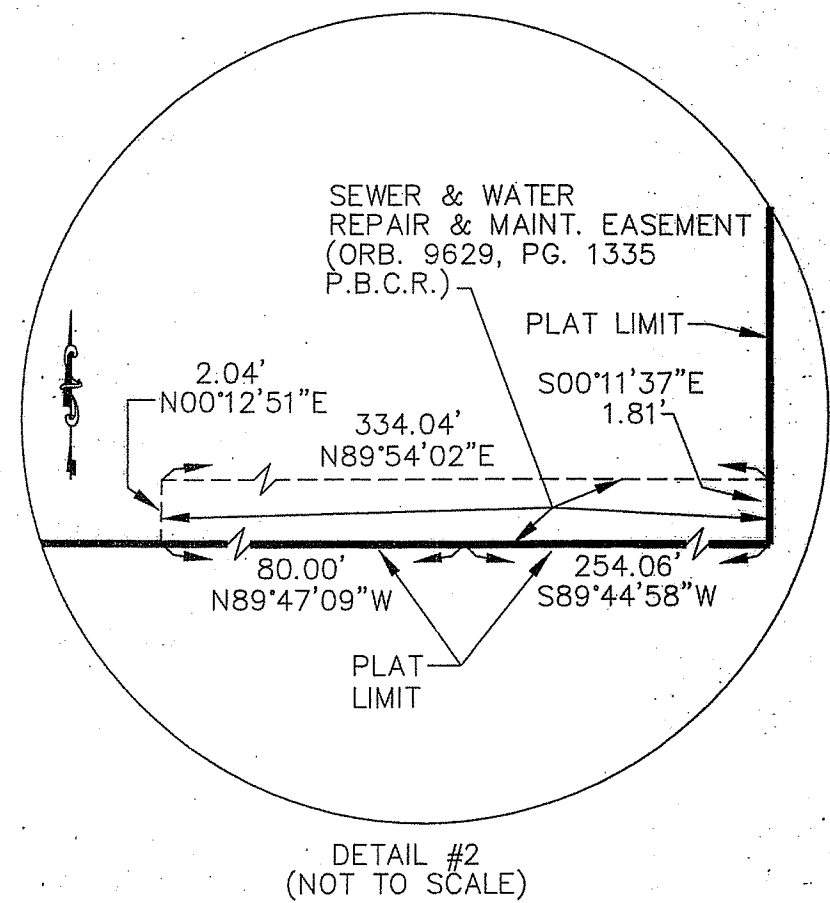
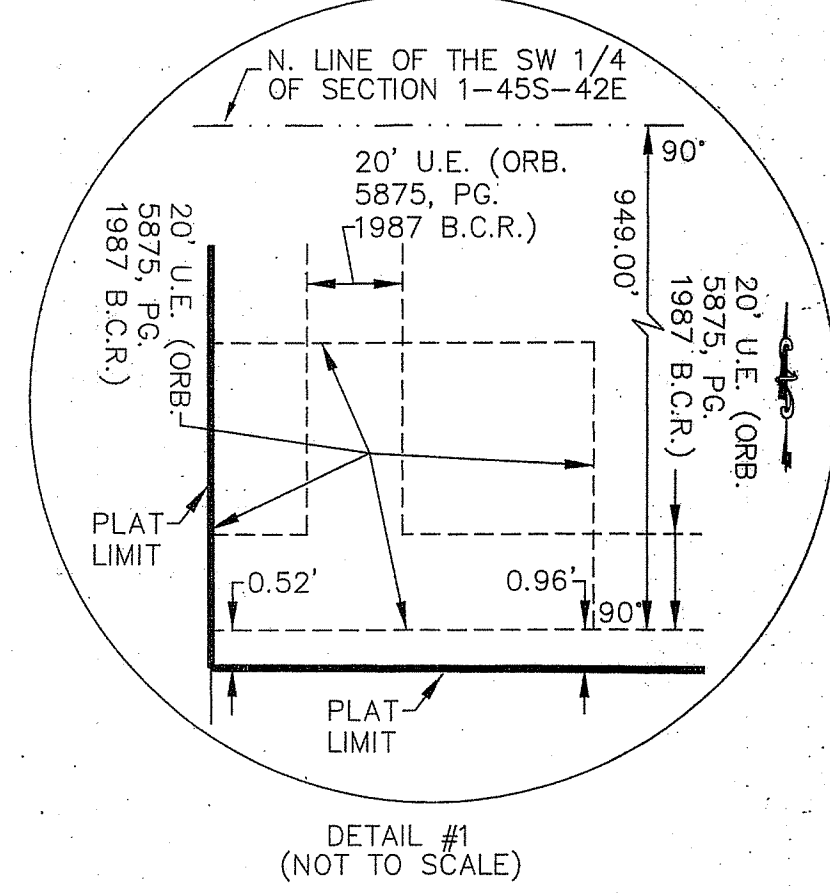
A PORTION OF THE EAST ONE HALF OF THE NORTHEAST ONE QUARTER OF THE SOUTHWEST ONE QUARTER OF SECTION 1, TOWNSHIP 45 SOUTH, RANGE 42 EAST, PALM BEACH COUNTY, FLORIDA.



SURVEYOR'S NOTES:

- THE BEARINGS SHOWN HEREON ARE BASED ON THE EAST LINE OF THE WEST 1/2 OF SECTION 1-45S-42E HAVING A GRID BEARING OF NORTH 00°11'37" WEST AND ALL OTHER BEARINGS ARE RELATIVE THERETO.
- THE COORDINATES SHOWN HEREON ARE GRID. DATUM = NAD 83, 1990 ADJUSTMENT ZONE = FLORIDA EAST. LINEAR UNIT = US SURVEY FOOT. COORDINATE SYSTEM 1983 STATE PLANE TRANSVERSE MERCATOR PROJECTION. ALL DISTANCES ARE GROUND. SCALE FACTOR = 1.000037471. GROUND DISTANCE X SCALE FACTOR = GRID DISTANCE.
- NO BUILDINGS OR ANY KIND OF CONSTRUCTION OR TREES OR SHRUBS SHALL BE PLACED ON ANY EASEMENT WITHOUT PRIOR WRITTEN APPROVAL OF ALL EASEMENT BENEFICIARIES AND ALL APPLICABLE COUNTY APPROVALS OR PERMITS AS REQUIRED FOR SUCH ENCROACHMENTS.
- IN THOSE CASES WHERE EASEMENTS OF DIFFERENT TYPES CROSS OR COINCIDE, DRAINAGE EASEMENTS SHALL HAVE FIRST PRIORITY, UTILITY EASEMENTS SHALL HAVE SECOND PRIORITY, ACCESS EASEMENTS SHALL HAVE THIRD PRIORITY, AND ALL OTHER EASEMENTS SHALL BE SUBORDINATE TO THESE WITH THEIR PRIORITIES DETERMINED BY USE OF RIGHTS GRANTED.
- ALL SET PRM'S #3240 ARE ONE OF THE FOLLOWING: 4" SQUARE CONCRETE MONUMENT, 24" LONG, WITH BRASS DISC STAMPED "PEB PRM, 3240". NAIL & DISC STAMPED "PEB PRM, 3240" SET IN CONCRETE OR ASPHALT.

NOTICE: THIS PLAT, AS RECORDED IN ITS GRAPHIC FORM, IS THE OFFICIAL DEPICTION OF THE SUBDIVIDED LANDS DESCRIBED HEREIN AND WILL IN NO CIRCUMSTANCES BE SUPPLANTED IN AUTHORITY BY ANY OTHER GRAPHIC OR DIGITAL FORM OF THE PLAT. THERE MAY BE ADDITIONAL RESTRICTIONS THAT ARE NOT RECORDED ON THIS PLAT THAT MAY BE FOUND IN THE PUBLIC RECORDS OF PALM BEACH COUNTY, FLORIDA.



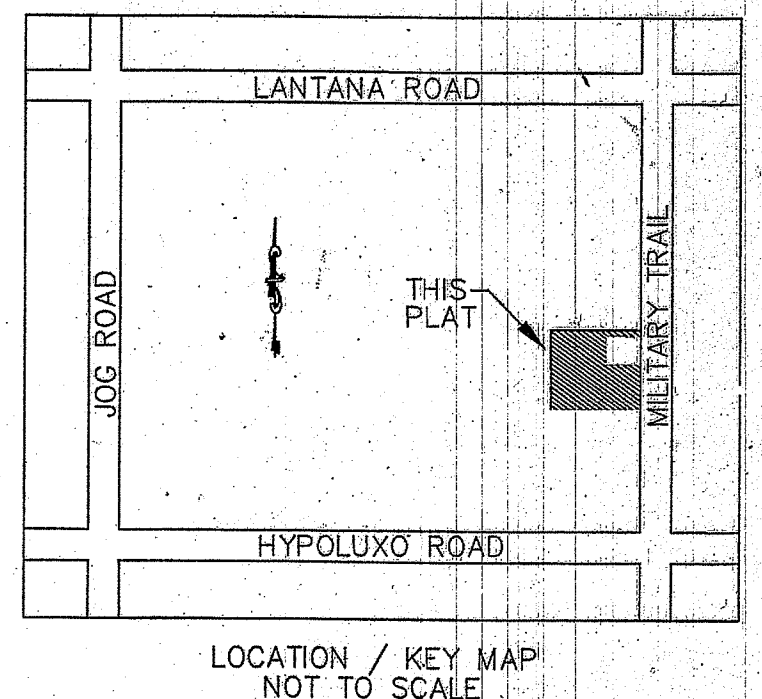
STATE OF FLORIDA
COUNTY OF PALM BEACH

THIS PLAT WAS FILED FOR RECORD AT _____ THIS _____ DAY OF _____ 20____ AND DULY RECORDED IN PLAT BOOK _____ ON PAGES _____ THROUGH _____

SHARON R. BOCK, CLERK AND COMPTROLLER

BY: _____ DC

- LEGEND:
- = SET PERMANENT REFERENCE MONUMENT (PRM) #3240 UNLESS NOTED OTHERWISE (SEE SURVEYOR'S NOTE 5)
 - = CENTERLINE
 - PG. = PAGE
 - P.C.S. = PLATBOOK
 - P.B. = PLATBOOK
 - P.B.C.R. = PALM BEACH COUNTY RECORDS
 - R/W = RIGHT OF WAY
 - S.F. = SQUARE FEET
 - P.O.B. = POINT OF BEGINNING
 - P.B.C. = PALM BEACH COUNTY
 - N 741502.636 COORDINATE NORTHING VALUE
 - E 933748.851 COORDINATE EASTING VALUE
 - CONC. = CONCRETE
 - PRM = PERMANENT REFERENCE MONUMENT
 - PCP = PERMANENT CONTROL POINT (NAIL & DISC STAMPED "PEB PRM #3240")
 - (C) = CALCULATED
 - L.A.E. = LIMITED ACCESS EASEMENT
 - P.B.C. = PALM BEACH COUNTY
 - U.E. = UTILITY EASEMENT
 - (M) = MEASURED
 - ORB. = OFFICIAL RECORD BOOK
 - NID = NAIL IN DISC



N 814531.1340
E 945973.9830
P.O.C.
SE COR. OF THE SW 1/4 OF SECTION 1-45S-42E, FND.
P.B.C. CONC. MONUMENT WITH BRASS DISC

N 814638.5300
E 945968.7310
FND. CONTROL STATION "JAMES" P.B.C. CONC. MONUMENT WITH BRASS DISC.