

SANTA CATALINA

A REPLAT OF A PORTION OF TRACT 20, BLOCK 22, PALM BEACH FARMS COMPANY PLAT NO. 3, ACCORDING TO THE PLAT THEREOF AS RECORDED IN PLAT BOOK 2, PAGE 45, PUBLIC RECORDS OF PALM BEACH COUNTY, FLORIDA, AND LYING IN SECTION 22, TOWNSHIP 44 SOUTH, RANGE 42 EAST, CITY OF GREENACRES, PALM BEACH COUNTY, FLORIDA.

SHEET 2 OF 2
FEBRUARY, 2017

THIS INSTRUMENT PREPARED BY
ROBERT A. BUGGEE
PROFESSIONAL SURVEYOR & MAPPER #3302
STATE OF FLORIDA
IN THE OFFICES OF "THE SURVEYOR"
233 E. GATEWAY BOULEVARD
BOYNTON BEACH, FLORIDA 33435
LICENSED BUSINESS # 7890

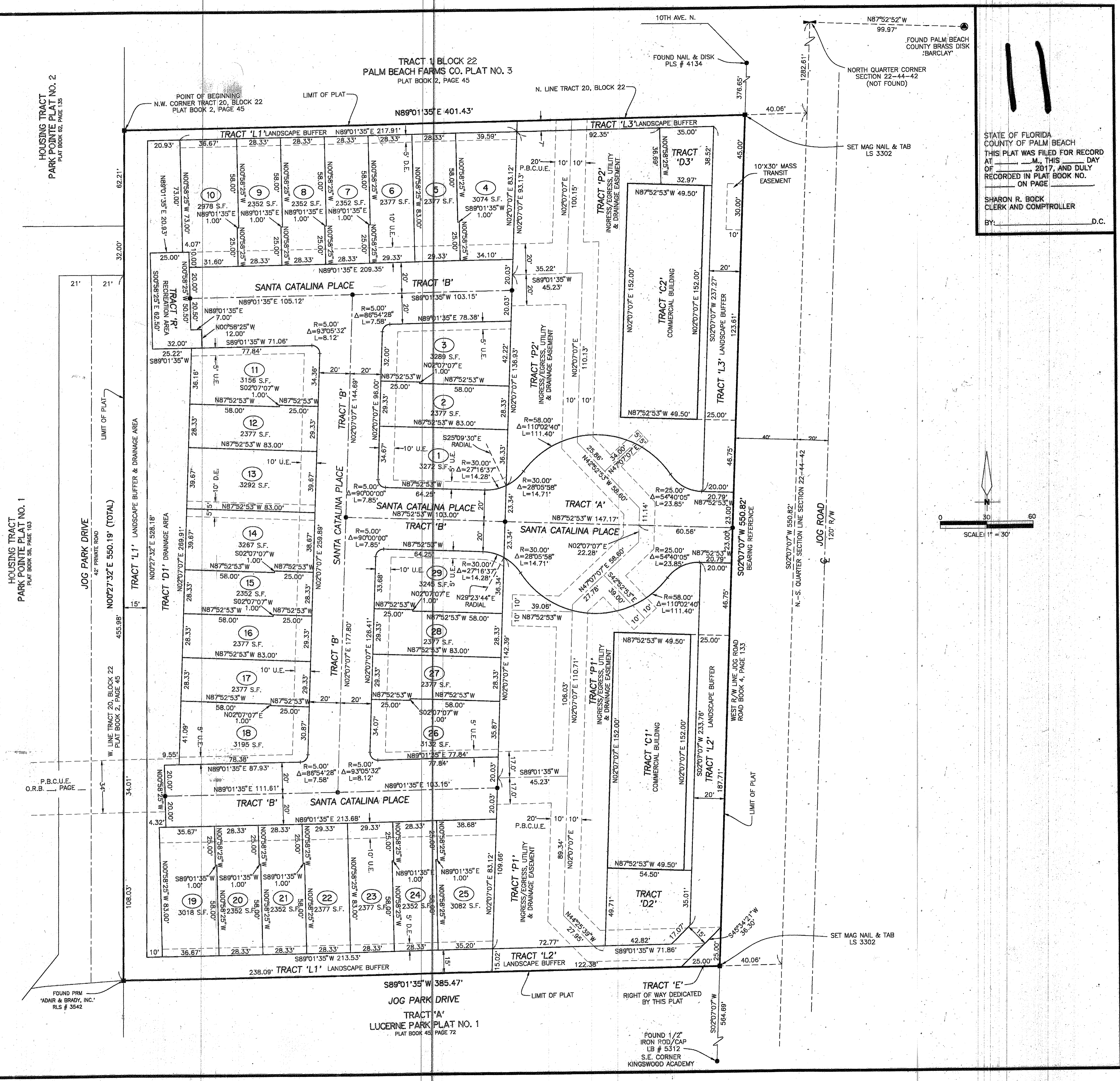
SITE DATA:

PLAT NAME:	SANTA CATALINA
AREA OF PLAT:	4.968 ACRES (216,406 S.F.)
AREA OF TRACT 'A':	0.281 ACRES (12,242 S.F.)
AREA OF TRACT 'B':	0.747 ACRES (32,562 S.F.)
AREA OF TRACT 'C1':	0.173 ACRES (7,524 S.F.)
AREA OF TRACT 'C2':	0.173 ACRES (7,524 S.F.)
AREA OF TRACT 'D1':	0.221 ACRES (9,629 S.F.)
AREA OF TRACT 'D2':	0.059 ACRES (2,560 S.F.)
AREA OF TRACT 'D3':	0.029 ACRES (1,277 S.F.)
AREA OF TRACT 'E':	0.007 ACRES (312 S.F.)
AREA OF TRACT 'L1':	0.305 ACRES (13,275 S.F.)
AREA OF TRACT 'L2':	0.157 ACRES (6,867 S.F.)
AREA OF TRACT 'L3':	0.133 ACRES (5,788 S.F.)
AREA OF TRACT 'P1':	0.431 ACRES (18,769 S.F.)
AREA OF TRACT 'P2':	0.418 ACRES (18,199 S.F.)
AREA OF TRACT 'R':	0.038 ACRES (1,647 S.F.)
AREA OF LOTS 1-29:	1.796 ACRES (78,231 S.F.)

LEGEND

- P.R.M. = PERMANENT REFERENCE MONUMENT
- = SET P.R.M. 4"x4" CONCRETE MONUMENT STAMPED 'LS 3302' UNLESS OTHERWISE NOTED
- ⊕ = CENTERLINE
- U.E. = UTILITY EASEMENT
- D.E. = DRAINAGE EASEMENT
- R/W = RIGHT OF WAY
- S.F. = SQUARE FEET
- P.B.C.U.E. = PALM BEACH COUNTY UTILITY EASEMENT

19 = LOT NUMBER



STATE OF FLORIDA
COUNTY OF PALM BEACH
THIS PLAT WAS FILED FOR RECORD
AT _____ M., THIS _____ DAY
OF _____ 2017, AND DULY
RECORDED IN PLAT BOOK NO. _____
ON PAGE _____

SHARON R. BOCK
CLERK AND COMPTROLLER

BY: _____ D.C.

