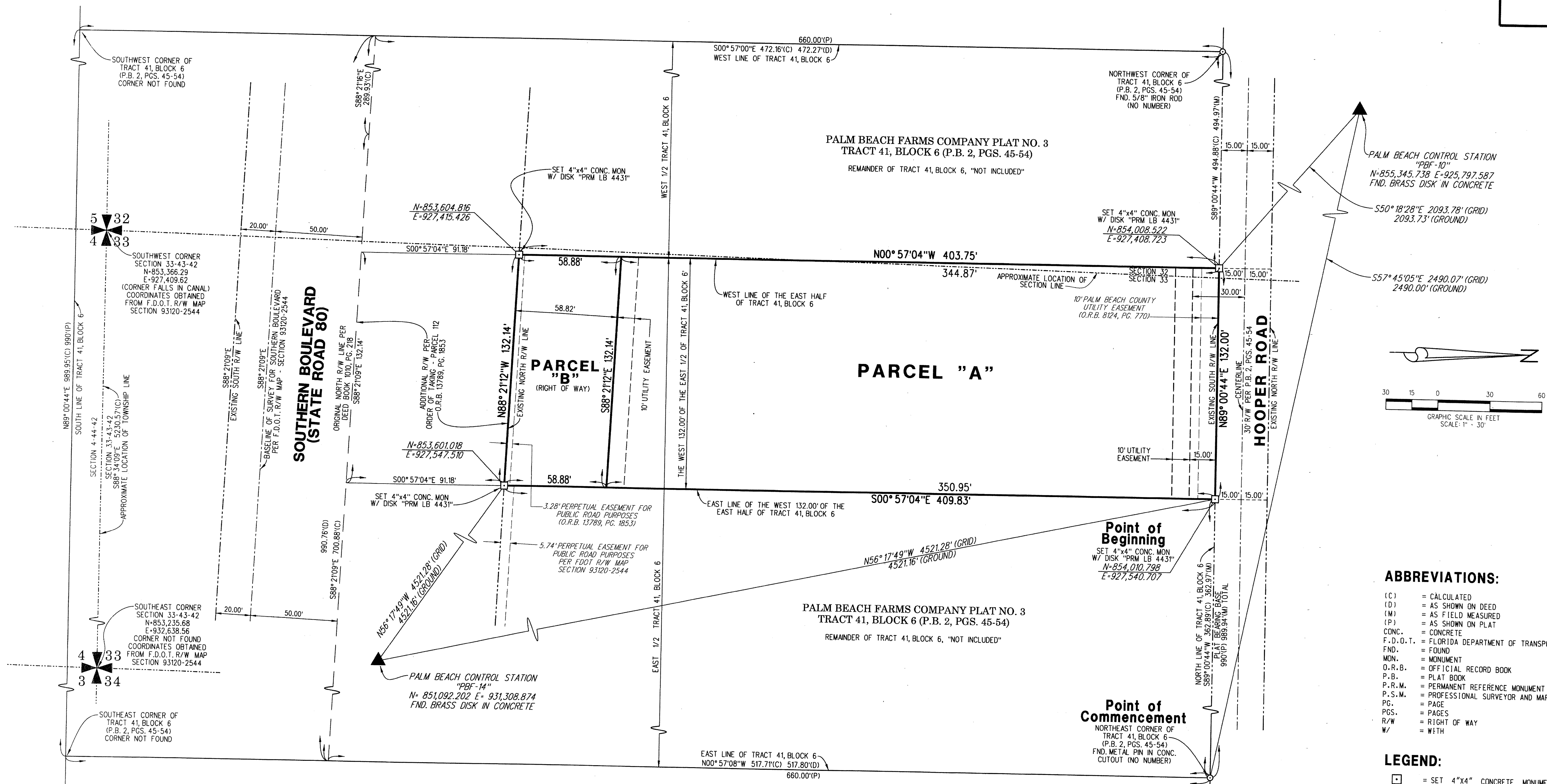


PALM BEACH ORTHOPAEDIC INSTITUTE

BEING A REPLAT OF A PORTION OF TRACT 41, BLOCK 6, AS SHOWN ON THE PALM BEACH FARMS COMPANY PLAT NO. 3 RECORDED IN PLAT BOOK 2, PAGES 45 THROUGH 54, PUBLIC RECORDS OF PALM BEACH COUNTY, FLORIDA LYING IN SECTIONS 32 & 33, TOWNSHIP 43 SOUTH, RANGE 42 EAST, PALM BEACH COUNTY, FLORIDA SHEET 2 OF 2



- ABBREVIATIONS:**
- (C) = CALCULATED
 - (D) = AS SHOWN ON DEED
 - (M) = AS FIELD MEASURED
 - (P) = AS SHOWN ON PLAT
 - CONC. = CONCRETE
 - F.D.O.T. = FLORIDA DEPARTMENT OF TRANSPORTATION
 - FND. = FOUND
 - MON. = MONUMENT
 - O.R.B. = OFFICIAL RECORD BOOK
 - P.B. = PLAT BOOK
 - P.R.M. = PERMANENT REFERENCE MONUMENT
 - P.S.M. = PROFESSIONAL SURVEYOR AND MAPPER
 - PG. = PAGE
 - PGS. = PAGES
 - R/W = RIGHT OF WAY
 - W/ = WITH
- LEGEND:**
- ☐ = SET 4"x4" CONCRETE MONUMENT WITH DISK STAMPED "PRM LB 4431" PERMANENT REFERENCE MONUMENT (P.R.M.), UNLESS OTHERWISE NOTED.

LIDBERG LAND SURVEYING, INC.
 LB4431 675 West Indiantown Road, Suite 200, Jupiter, Florida 33458 TEL. 561-746-8454

CAD. K:\JUST \ 334342 \ 02-45 \ 15-089 \ 15-089-306 \ 15-089-306.DGN			
REF.			
FLD.	FB.	PG.	JOB 15-089-306
OFF. CASASUS			DATE JANUARY 2017
CKD. D.C.L.	SHEET 2	OF 2	DWG. D15-089P