

THIS INSTRUMENT PREPARED BY
DAVID P. LINDLEY
OF
CAULFIELD and WHEELER, INC.
SURVEYORS - ENGINEERS - PLANNERS
7900 GLADES ROAD, SUITE 100
BOCA RATON, FLORIDA 33434 - (561)392-1991
CERTIFICATE OF AUTHORIZATION NO. LB3591

FIELDS AT GULFSTREAM POLO PUD - PLAT ONE

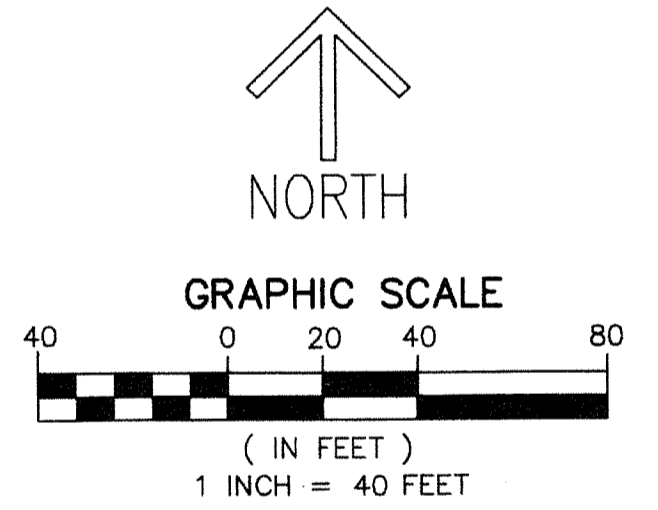
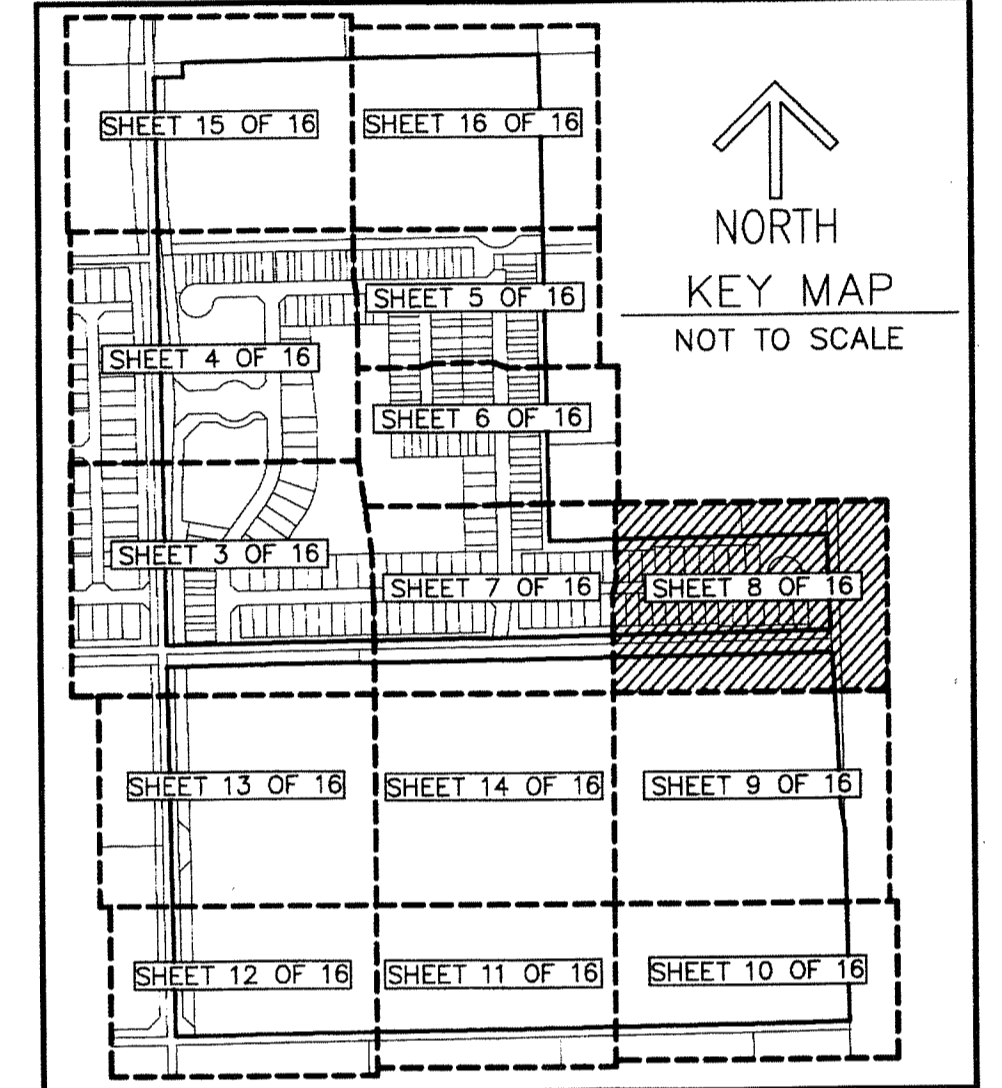
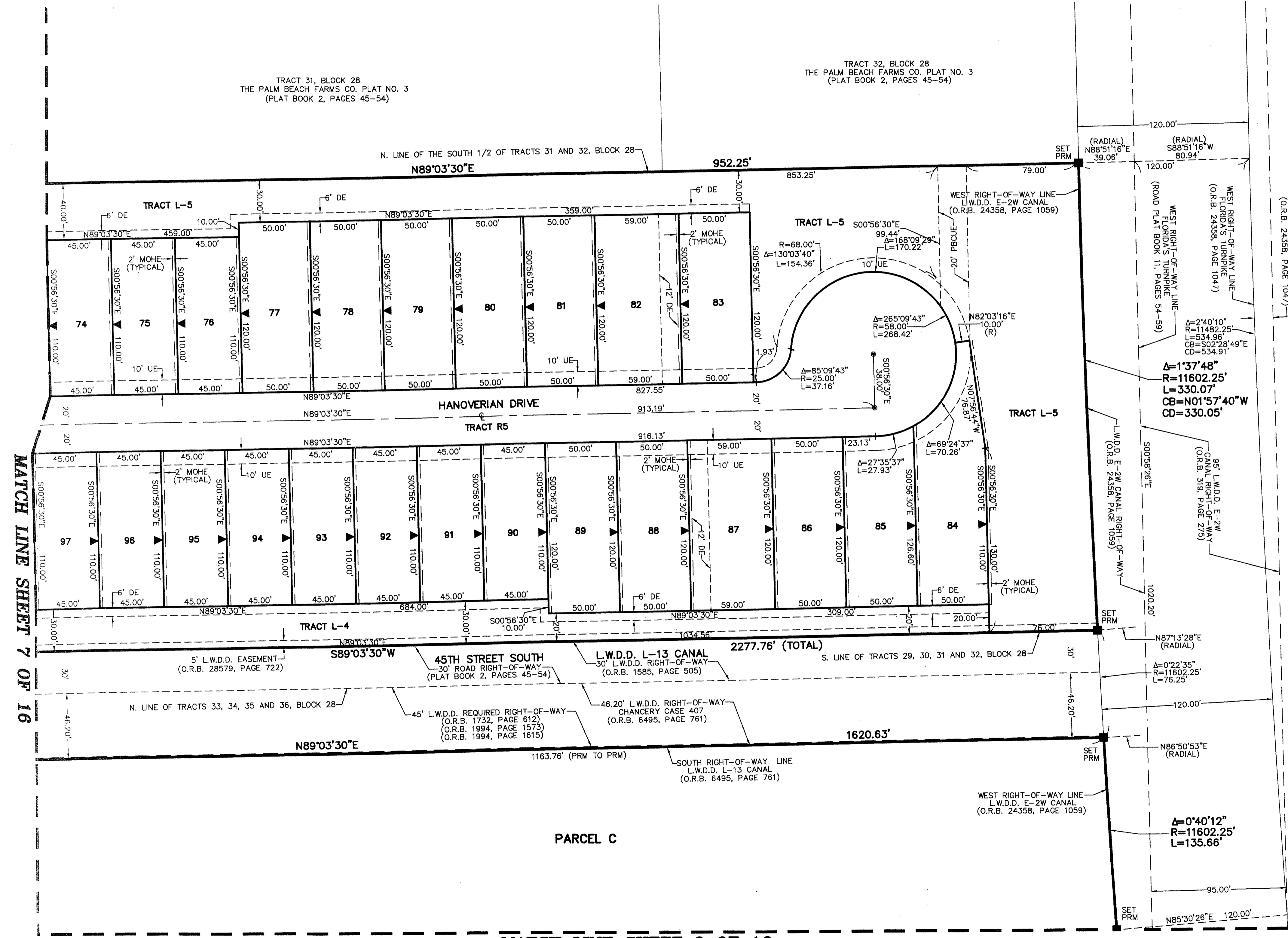
A PLANNED UNIT DEVELOPMENT
BEING A REPLAT OF A PORTION OF BLOCK 28, PALM BEACH FARMS COMPANY PLAT NO. 3,
AS RECORDED IN PLAT BOOK 2, PAGES 45 THROUGH 54, OF THE PUBLIC RECORDS OF PALM BEACH COUNTY, FLORIDA,
LYING IN SECTION 29, TOWNSHIP 44 SOUTH, RANGE 42 EAST, PALM BEACH COUNTY, FLORIDA

87

STATE OF FLORIDA
COUNTY OF PALM BEACH
THIS PLAT WAS FILED FOR
RECORD AT _____ M.
THIS _____ DAY OF _____
A.D. 20____ AND DULY RECORDED
IN PLAT BOOK _____ ON
PAGES _____ AND _____
SHARON R. BOCK
CLERK AND COMPTROLLER

BY: _____
DEPUTY CLERK

SHEET 8 OF 16



NOTES
COORDINATES, BEARINGS AND DISTANCES
COORDINATES SHOWN ARE GRID
DATUM = NAD 83 (90/98 ADJUSTMENT)
ZONE = FLORIDA EAST
LINEAR UNIT = US SURVEY FEET
COORDINATE SYSTEM 1983, STATE PLANE
TRANSVERSE MERCATOR PROJECTION
ALL DISTANCES ARE GROUND
SCALE FACTOR = 1.0000236
GROUND DISTANCE X SCALE FACTOR = GRID DISTANCE
BEARINGS AS SHOWN HEREON ARE GRID DATUM,
NAD 83 (90/98 ADJUSTMENT), FLORIDA EAST ZONE.

LEGEND/ABBREVIATIONS
C - CENTERLINE
Δ - DELTA (CENTRAL ANGLE)
CB - CHORD BEARING
CD - CHORD DISTANCE
DE - DRAINAGE EASEMENT
E - EASTING
L - ARC LENGTH
LAE - LIMITED ACCESS EASEMENT
LB - LICENSED BUSINESS
LMAE - LAKE MAINTENANCE ACCESS EASEMENT
LME - LAKE MAINTENANCE EASEMENT
LSE - LIFT STATION EASEMENT
L.W.D.D. - LAKE WORTH DRAINAGE DISTRICT
N - NORTHING
MOHE - MAINTENANCE AND OVERHANG EASEMENT
O.R.B. - OFFICIAL RECORD BOOK
PBCUE - PALM BEACH COUNTY UTILITY EASEMENT
R - RADIUS
RCE - ROADWAY CONSTRUCTION EASEMENT
(RAD) - INDICATES RADIAL LINE
UE - UTILITY EASEMENT
SWE - SIDEWALK EASEMENT
▶ - INDICATES "ZERO" SIDE OF LOT LINE
■ - DENOTES PERMANENT REFERENCE MONUMENT
4" x 4" x 24" CONCRETE MONUMENT WITH
ALUMINUM DISK STAMPED "C&W PRM LB3591"
● - DENOTES PERMANENT CONTROL POINT
NAIL AND METAL DISK STAMPED "PCP LB3591"

MATCH LINE SHEET 7 OF 16

MATCH LINE SHEET 9 OF 16