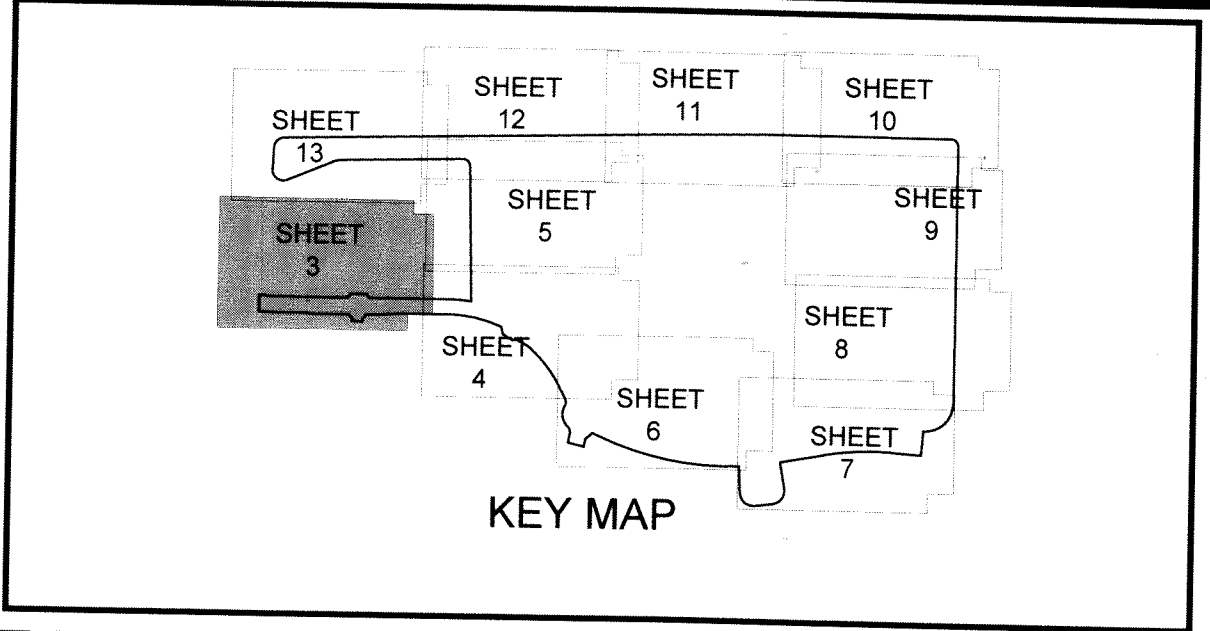
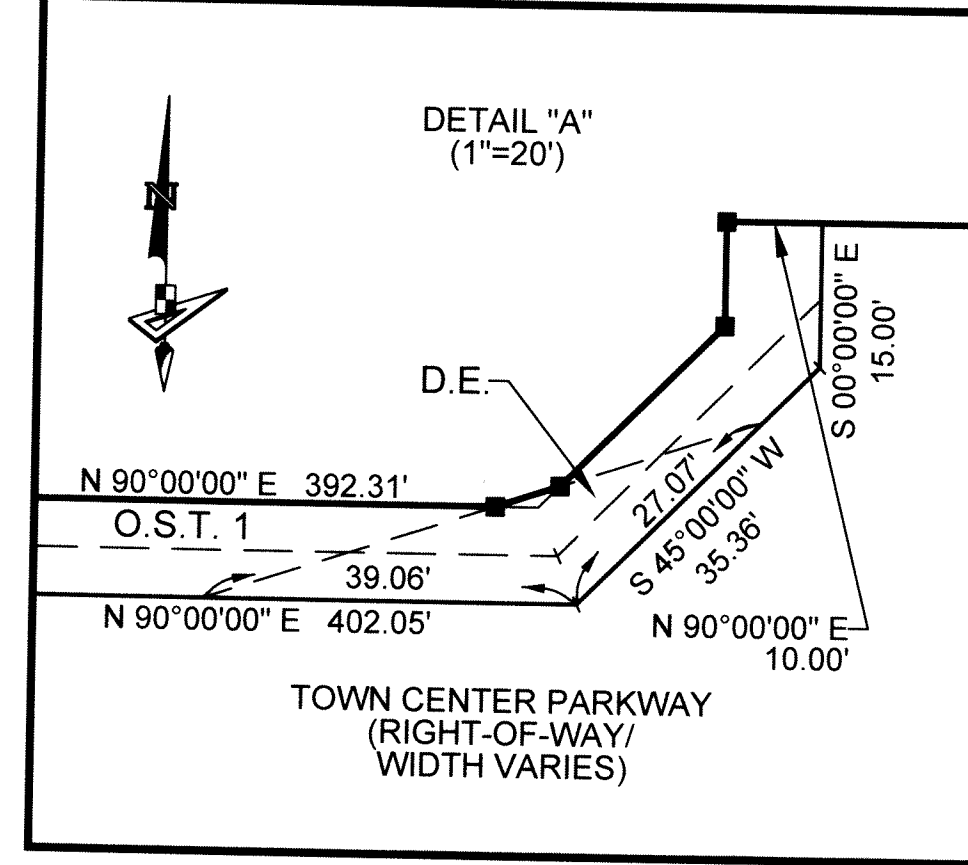
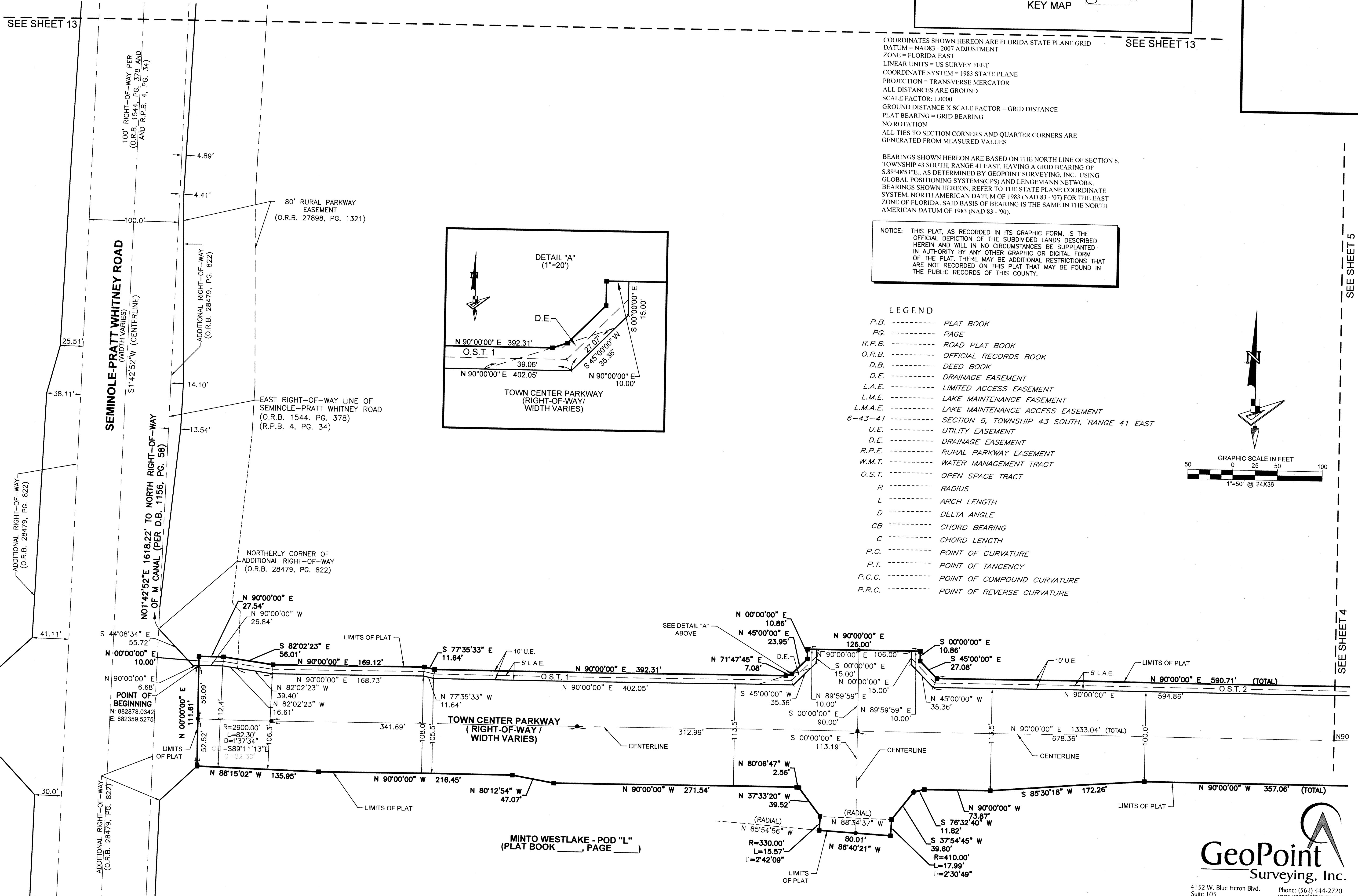


TOWN CENTER PARKWAY NORTH

BEING A PLAT OF A PORTION OF
SECTION 6, TOWNSHIP 43 SOUTH, RANGE 41 EAST,
AND SECTION 1, TOWNSHIP 43 SOUTH, RANGE 40 EAST,
CITY OF WESTLAKE, FLORIDA



108

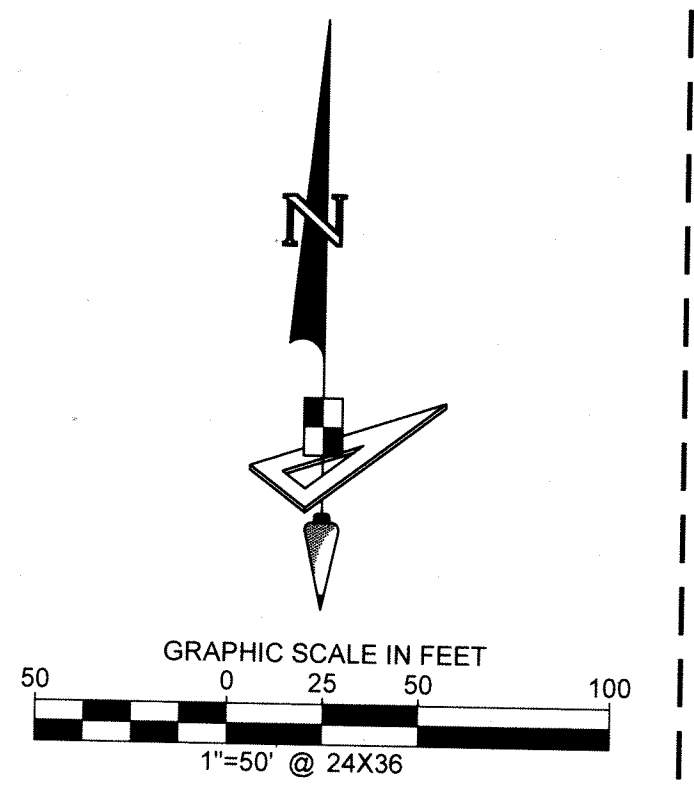


COORDINATES SHOWN HEREON ARE FLORIDA STATE PLANE GRID
DATUM = NAD83 - 2007 ADJUSTMENT
ZONE = FLORIDA EAST
LINEAR UNITS = US SURVEY FEET
COORDINATE SYSTEM = 1983 STATE PLANE
PROJECTION = TRANSVERSE MERCATOR
ALL DISTANCES ARE GROUND
SCALE FACTOR = 1.0000
GROUND DISTANCE X SCALE FACTOR = GRID DISTANCE
PLAT BEARING = GRID BEARING
NO ROTATION
ALL TIES TO SECTION CORNERS AND QUARTER CORNERS ARE
GENERATED FROM MEASURED VALUES

BEARINGS SHOWN HEREON ARE BASED ON THE NORTH LINE OF SECTION 6,
TOWNSHIP 43 SOUTH, RANGE 41 EAST, HAVING A GRID BEARING OF
S.89°48'53"E. AS DETERMINED BY GEOPoint SURVEYING, INC. USING
GLOBAL POSITIONING SYSTEMS (GPS) AND LENGEMANN NETWORK
BEARINGS SHOWN HEREON, REFER TO THE STATE PLANE COORDINATE
SYSTEM, NORTH AMERICAN DATUM OF 1983 (NAD 83 - '07) FOR THE EAST
ZONE OF FLORIDA. SAID BASIS OF BEARING IS THE SAME IN THE NORTH
AMERICAN DATUM OF 1983 (NAD 83 - '90).

NOTICE: THIS PLAT, AS RECORDED IN ITS GRAPHIC FORM, IS THE
OFFICIAL DEPICTION OF THE SUBDIVIDED LANDS DESCRIBED
HEREIN AND WILL IN NO CIRCUMSTANCES BE SUPPLANTED
IN AUTHORITY BY ANY OTHER GRAPHIC OR DIGITAL FORM
OF THE PLAT. THERE MAY BE ADDITIONAL RESTRICTIONS THAT
ARE NOT RECORDED ON THIS PLAT THAT MAY BE FOUND IN
THE PUBLIC RECORDS OF THIS COUNTY.

- LEGEND**
- P.B. ----- PLAT BOOK
 - PG. ----- PAGE
 - R.P.B. ----- ROAD PLAT BOOK
 - O.R.B. ----- OFFICIAL RECORDS BOOK
 - D.B. ----- DEED BOOK
 - D.E. ----- DRAINAGE EASEMENT
 - L.A.E. ----- LIMITED ACCESS EASEMENT
 - L.M.E. ----- LAKE MAINTENANCE EASEMENT
 - L.M.A.E. ----- LAKE MAINTENANCE ACCESS EASEMENT
 - 6-43-41 ----- SECTION 6, TOWNSHIP 43 SOUTH, RANGE 41 EAST
 - U.E. ----- UTILITY EASEMENT
 - D.E. ----- DRAINAGE EASEMENT
 - R.P.E. ----- RURAL PARKWAY EASEMENT
 - W.M.T. ----- WATER MANAGEMENT TRACT
 - O.S.T. ----- OPEN SPACE TRACT
 - R ----- RADIUS
 - L ----- ARCH LENGTH
 - D ----- DELTA ANGLE
 - CB ----- CHORD BEARING
 - C ----- CHORD LENGTH
 - P.C. ----- POINT OF CURVATURE
 - P.T. ----- POINT OF TANGENCY
 - P.C.C. ----- POINT OF COMPOUND CURVATURE
 - P.R.C. ----- POINT OF REVERSE CURVATURE



UNPLATTED

SEE SHEET 13

SEE SHEET 13

SEE SHEET 5

SEE SHEET 4



4152 W. Blue Heron Blvd. Phone: (561) 444-2720
Suite 105 www.geopointsurvey.com
Riviera Beach, FL 33404 Licensed Business Number LB 7768