

PERIMETER

SURVEYING & MAPPING
Certificate of Authorization No. LB7264
Prepared by: Jeff S. Hodapp, P.S.M.
947 Clint Moore Road
Boca Raton, Florida 33487
Tel: (561) 241-9988
Fax: (561) 241-5182

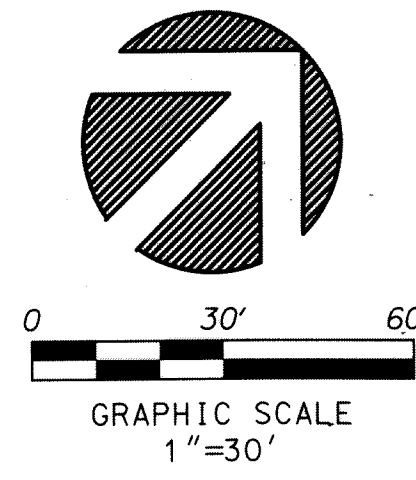
LEGEND:

- PERMANENT CONTROL POINT (NAIL & DISK •LB7264)
- ⊕ CENTERLINE
- ABBREVIATIONS:
- B.E. BUFFER EASEMENT
- CH CHORD
- CHB CHORD BEARING
- CONC. CONCRETE
- COR. CORNER
- D DELTA (CENTRAL ANGLE)
- D.E. DRAINAGE EASEMENT
- D.T. DRIVEWAY TRACT
- FND. FOUND
- L.A.E. LIMITED ACCESS EASEMENT
- L.B. LICENSED BUSINESS
- L.E. LANDSCAPE EASEMENT
- L.M.E. LAKE MAINTENANCE EASEMENT
- L.M.A.E. LAKE MAINTENANCE ACCESS EASEMENT
- L.S. LICENSED SURVEYOR
- L.S.E. LIFT STATION EASEMENT
- L.W.D.D. LAKE WORTH DRAINAGE DISTRICT

- SET P.R.M. (UNLESS OTHERWISE NOTED) - 4" X 4" CONC. MON. WITH ALUMINUM DISK STAMPED P.R.M. •LB7264
- MON. MONUMENT
- O.R.B. OFFICIAL RECORDS BOOK
- N.R. NON-RADIAL
- P.B. PLAT BOOK
- P.B.C. PALM BEACH COUNTY
- P.B.C.R. PALM BEACH COUNTY RECORDS
- P.B.C.U.E. PALM BEACH COUNTY UTILITY EASEMENT
- P.G. PAGE
- P.C.P. PERMANENT CONTROL POINT
- P.O.B. POINT OF BEGINNING
- P.O.C. POINT OF COMMENCEMENT
- P.R.M. PERMANENT REFERENCE MONUMENT
- P.S.M. PROFESSIONAL SURVEYOR & MAPPER
- P.U.D. PLANNED UNIT DEVELOPMENT
- R RADIUS
- RAD. RADIAL
- R.O.W. RIGHT-OF-WAY
- S.E. SIDEWALK EASEMENT
- SEC. SECTION
- S.F. SQUARE FEET
- U.E. UTILITY EASEMENT

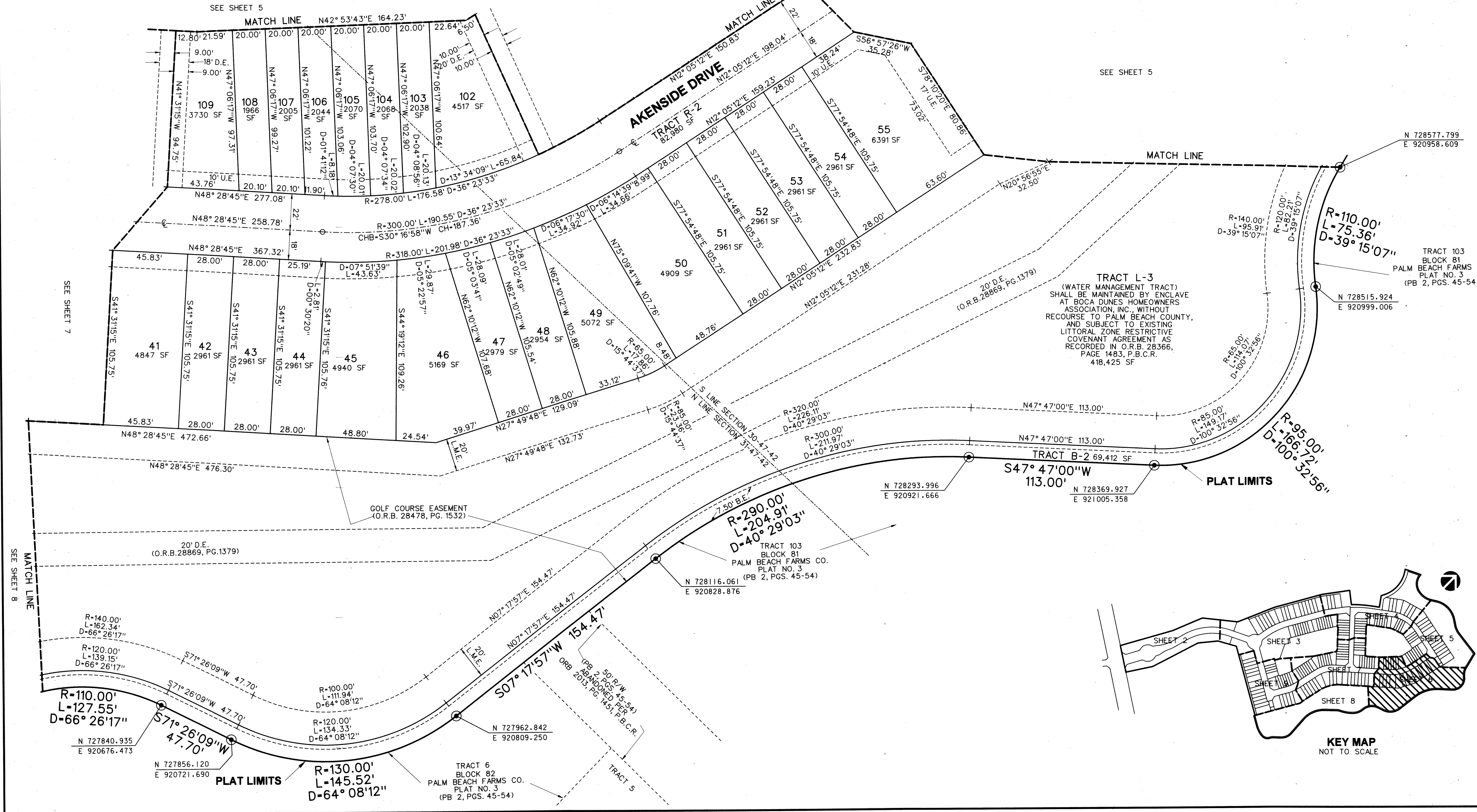
BOCA DUNES PUD

A REPLAT OF A PORTION OF TRACTS 90-92, 101-103, BLOCK 81 AND A PORTION OF TRACTS 6-10, 13-16, AND 32, BLOCK 82, ALL OF "PALM BEACH FARMS CO. PLAT NO.3" (P.B. 2, PGS 45-54, P.B.C.R.) AND PORTIONS OF ADJACENT ABANDONED RIGHTS-OF-WAY (O.R.B. 2013, PG. 1451, P.B.C.R.) IN SECTIONS 30 & 31, TOWNSHIP 47 SOUTH, RANGE 42 EAST PALM BEACH COUNTY, FLORIDA.



126

SHEET 6 OF 9



TRACT L-3
(WATER MANAGEMENT TRACT)
SHALL BE MAINTAINED BY ENCLAVE
AT BOCA DUNES HOMEOWNERS
ASSOCIATION, INC., WITHOUT
RECOURSE TO PALM BEACH COUNTY,
AND SUBJECT TO EXISTING
LITTORAL ZONE RESTRICTIVE
COVENANT AGREEMENT AS
RECORDED IN O.R.B. 28366,
PAGE 1483, P.B.C.R.
418,425 SF

