

PERIMETER

SURVEYING & MAPPING
Certificate of Authorization No. LB7264
Prepared by: Jeff S. Hodapp, P.S.M.
947 Clint Moore Road
Boca Raton, Florida 33487
Tel: (561) 241-9988
Fax: (561) 241-5182

BOCA DUNES PUD

A REPLAT OF A PORTION OF TRACTS 90-92, 101-103, BLOCK 81 AND A PORTION OF TRACTS 6-10, 13-16, AND 32, BLOCK 82, ALL OF "PALM BEACH FARMS CO. PLAT NO.3" (P.B. 2, PGS 45-54, P.B.C.R.) AND PORTIONS OF ADJACENT ABANDONED RIGHTS-OF-WAY (O.R.B. 2013, PG. 1451, P.B.C.R.) IN SECTIONS 30 & 31, TOWNSHIP 47 SOUTH, RANGE 42 EAST PALM BEACH COUNTY, FLORIDA.

127

LEGEND:

- SET P.R.M. (UNLESS OTHERWISE NOTED)-4" X4" CONC. MON. WITH ALUMINUM DISK STAMPED P.R.M. #LB7264
- PERMANENT CONTROL POINT (NAIL & DISK #LB7264)
- CENTERLINE

ABBREVIATIONS:

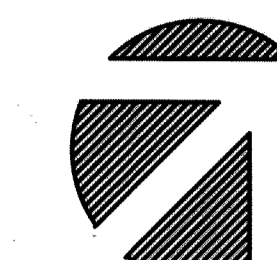
- B.E. BUFFER EASEMENT
- CH CHORD
- CHB CHORD BEARING
- CONC. CONCRETE
- COR. CORNER
- D DELTA (CENTRAL ANGLE)
- D.E. DRAINAGE EASEMENT
- D.T. DRIVEWAY TRACT
- FND. FOUND
- L ARLENGTH
- L.A.E. LIMITED ACCESS EASEMENT
- L.B. LICENSED BUSINESS
- L.E. LANDSCAPE EASEMENT
- L.M.E. LAKE MAINTENANCE EASEMENT
- L.M.A.E. LAKE MAINTENANCE ACCESS EASEMENT
- L.S. LICENSED SURVEYOR
- L.S.E. LIFT STATION EASEMENT
- L.W.D.D. LAKE WORTH DRAINAGE DISTRICT

- MON. MONUMENT
- O.R.B. OFFICIAL RECORDS BOOK
- N.R. NON-RADIAL
- P.B. PLAT BOOK
- P.B.C. PALM BEACH COUNTY
- P.B.C.R. PALM BEACH COUNTY RECORDS
- P.B.C.U.E. PALM BEACH COUNTY UTILITY EASEMENT
- P.G. PAGE
- P.C.P. PERMANENT CONTROL POINT
- P.O.B. POINT OF BEGINNING
- P.O.C. POINT OF COMMENCEMENT
- P.R.M. PERMANENT REFERENCE MONUMENT
- P.S.M. PROFESSIONAL SURVEYOR & MAPPER
- P.U.D. PLANNED UNIT DEVELOPMENT
- R. RADIUS
- RAD. RADIAL
- R/W RIGHT-OF-WAY
- S.E. SIDEWALK EASEMENT
- SEC. SECTION
- S.F. SQUARE FEET
- U.E. UTILITY EASEMENT

MON.

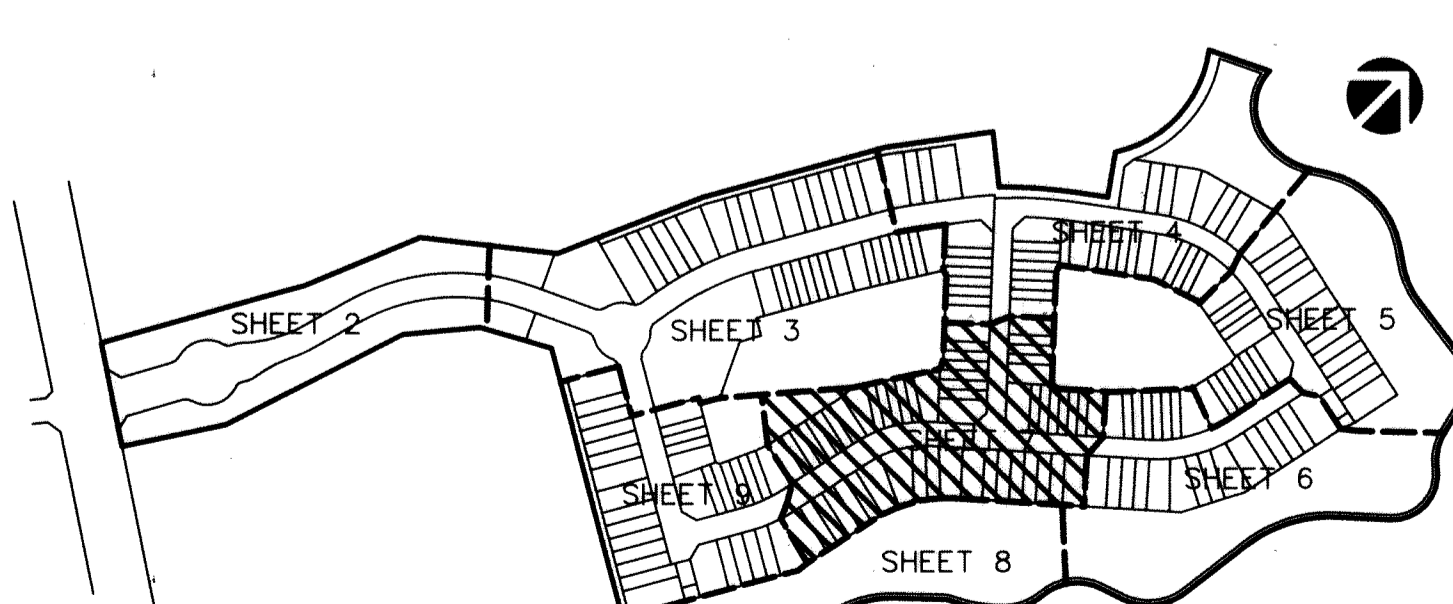
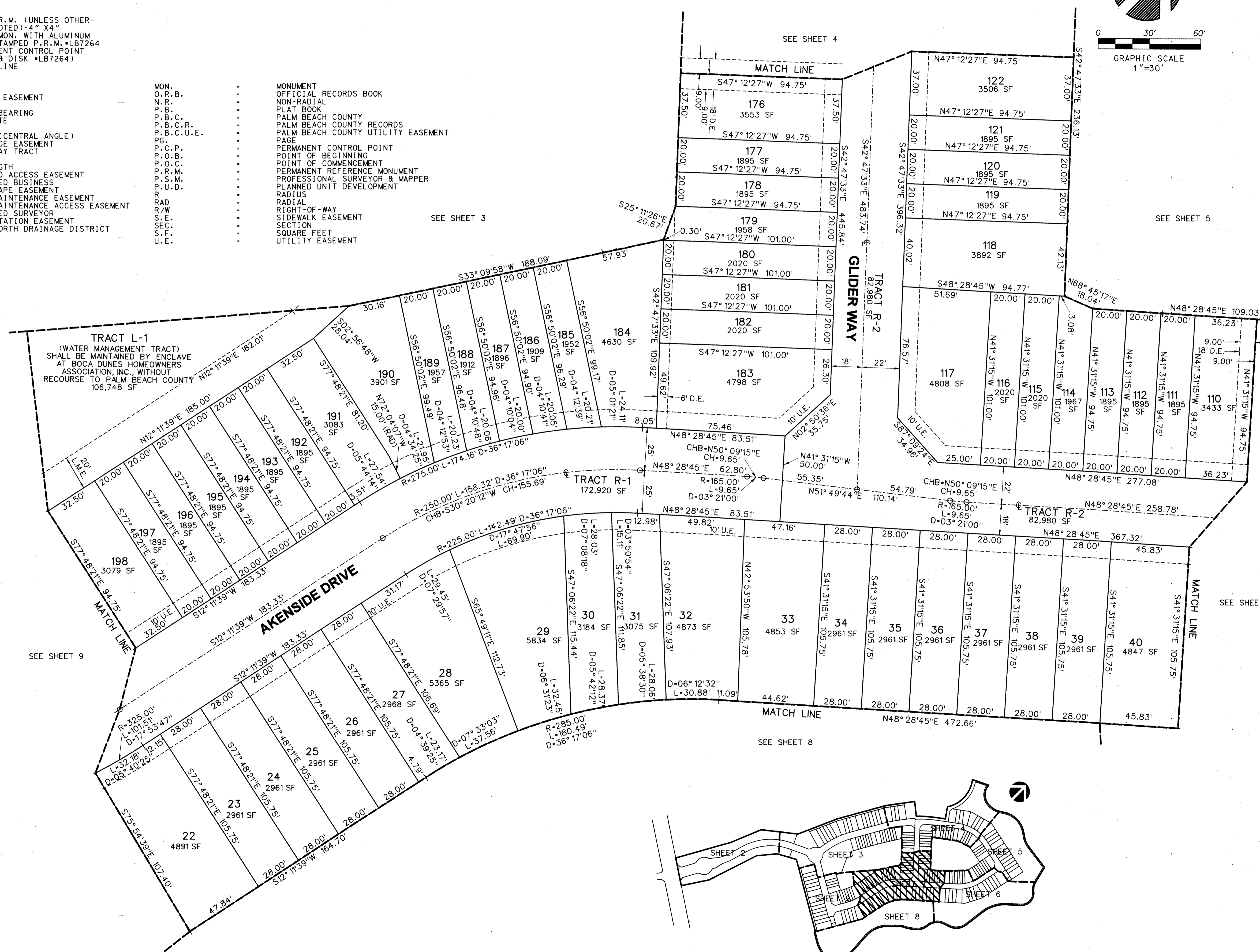
- O.R.B.
- N.R.
- P.B.
- P.B.C.
- P.B.C.R.
- P.B.C.U.E.
- P.G.
- P.C.P.
- P.O.B.
- P.O.C.
- P.R.M.
- P.S.M.
- P.U.D.
- R.
- RAD.
- R/W
- S.E.
- SEC.
- S.F.
- U.E.

- MONUMENT
- OFFICIAL RECORDS BOOK
- NON-RADIAL
- PLAT BOOK
- PALM BEACH COUNTY
- PALM BEACH COUNTY RECORDS
- PALM BEACH COUNTY UTILITY EASEMENT
- PAGE
- PERMANENT CONTROL POINT
- POINT OF BEGINNING
- POINT OF COMMENCEMENT
- PERMANENT REFERENCE MONUMENT
- PROFESSIONAL SURVEYOR & MAPPER
- PLANNED UNIT DEVELOPMENT
- RADIUS
- RADIAL
- RIGHT-OF-WAY
- SIDEWALK EASEMENT
- SECTION
- SQUARE FEET
- UTILITY EASEMENT



0 30' 60'
GRAPHIC SCALE
1"=30'

SHEET 7 OF 9



KEY MAP
NOT TO SCALE