

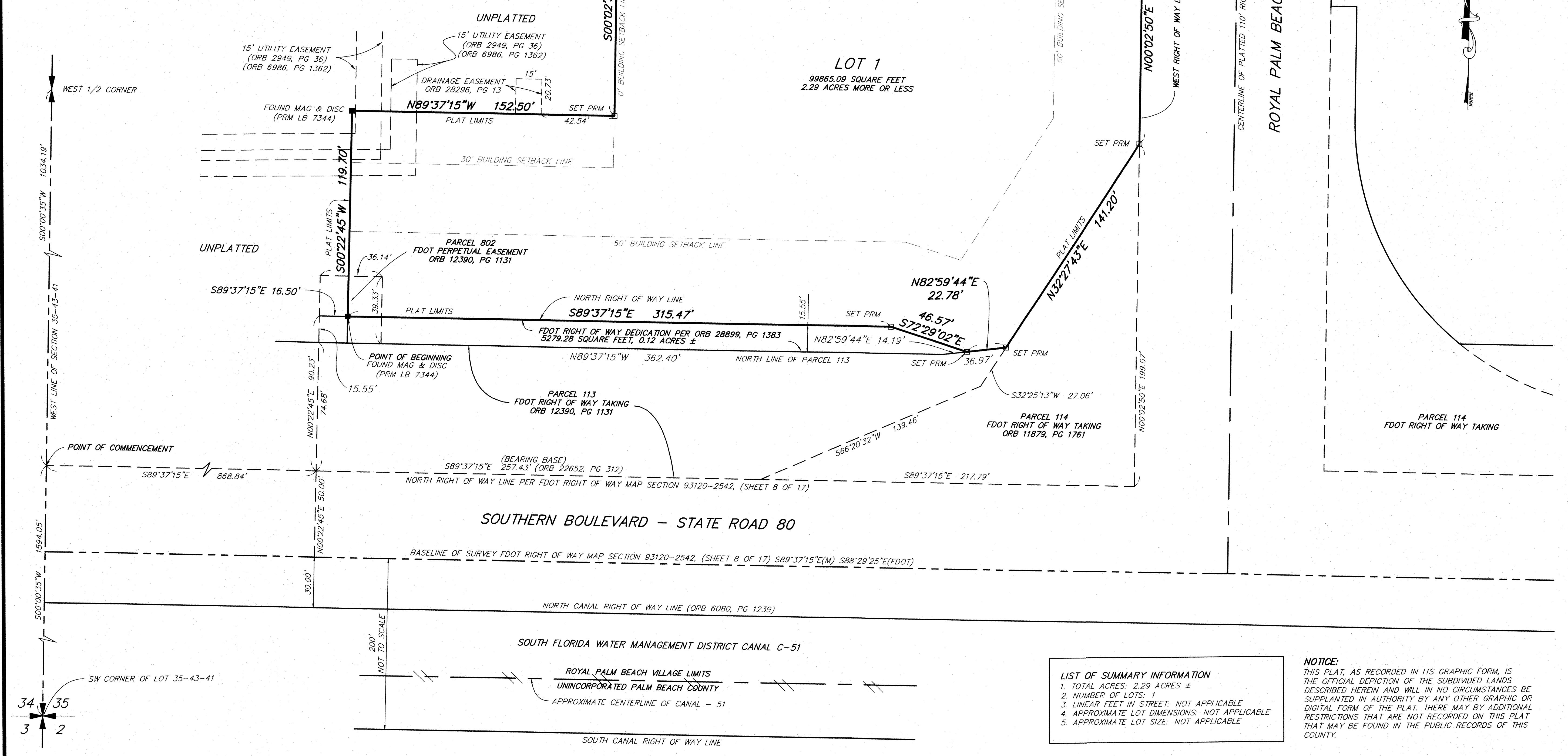
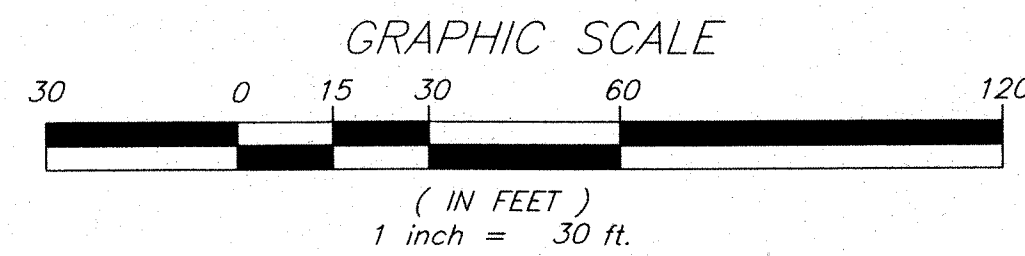
RACETRAC PETROLEUM AT ROYAL PALM BEACH

A PORTION OF LAND LYING IN SECTION 35, TOWNSHIP 43 SOUTH, RANGE 41 EAST
VILLAGE OF ROYAL PALM BEACH, PALM BEACH COUNTY, FLORIDA.

NOVEMBER 2014
THIS INSTRUMENT PREPARED BY
ROBERT BLOOMSTER JR.
PROFESSIONAL SURVEYOR AND MAPPER NO. 4134
STATE OF FLORIDA

IN THE OFFICE OF
BLOOMSTER PROFESSIONAL LAND SURVEYORS, INC.

641 NORTHEAST SPENCER STREET
JENSEN BEACH, FLORIDA 34957
OFFICE PHONE NO. (772) 334-0868 - FAX NO. (772) 334-5283
LICENSED BUSINESS NO. 6018



LEGEND AND ABBREVIATIONS:
 ■ = FOUND PRM (SEE SKETCH)
 □ = PERMANENT REFERENCE MONUMENT,
 SET 4"x4" CONCRETE MONUMENT & DISC
 (PRM LB 6018)
 PLS = PROFESSIONAL LAND SURVEYOR
 PRM = PERMANENT REFERENCE MONUMENT
 PB = PLAT BOOK
 PG = PAGE
 ORB = OFFICIAL RECORDS BOOK
 LB = LICENSED BUSINESS
 FDOT = FLORIDA DEPARTMENT OF TRANSPORTATION
 PBCR = PALM BEACH COUNTY RECORDS

UNPLATTED
 CROSS ACCESS EASEMENT
 ORB 28296, PG 39
 (BLANKET EASEMENT FOR VEHICULAR
 AND PEDESTRIAN INGRESS AND EGRESS,
 OVER, ACROSS AND THROUGH THE
 DRIVEWAYS AND ACCESS WAYS)

135
 STATE OF FLORIDA
 COUNTY OF PALM BEACH
 THIS PLAT WAS FILED FOR
 RECORD AT _____, THIS
 _____ DAY OF _____
 2017, AND DULY RECORDED IN
 PLAT BOOK _____ PAGE _____
 SHARON R. BOCK
 CLERK AND COMPTROLLER
 BY: _____ D.C.

SHEET 2 OF 2

LIST OF SUMMARY INFORMATION
 1. TOTAL ACRES: 2.29 ACRES ±
 2. NUMBER OF LOTS: 1
 3. LINEAR FEET IN STREET: NOT APPLICABLE
 4. APPROXIMATE LOT DIMENSIONS: NOT APPLICABLE
 5. APPROXIMATE LOT SIZE: NOT APPLICABLE

NOTICE:
 THIS PLAT, AS RECORDED IN ITS GRAPHIC FORM, IS
 THE OFFICIAL DEPICTION OF THE SUBDIVIDED LANDS
 DESCRIBED HEREIN AND WILL IN NO CIRCUMSTANCES BE
 SUPPLANTED IN AUTHORITY BY ANY OTHER GRAPHIC OR
 DIGITAL FORM OF THE PLAT. THERE MAY BE ADDITIONAL
 RESTRICTIONS THAT ARE NOT RECORDED ON THIS PLAT
 THAT MAY BE FOUND IN THE PUBLIC RECORDS OF THIS
 COUNTY.