

# PALMS GATEWAY

BEING A SUBDIVISION OF A PORTION OF LAND  
LYING WITHIN THE NE 1/4 OF SECTION 32,  
TOWNSHIP 43 SOUTH, RANGE 43 EAST,  
CITY OF WEST PALM BEACH,  
PALM BEACH COUNTY, FLORIDA  
SHEET 2 OF 2

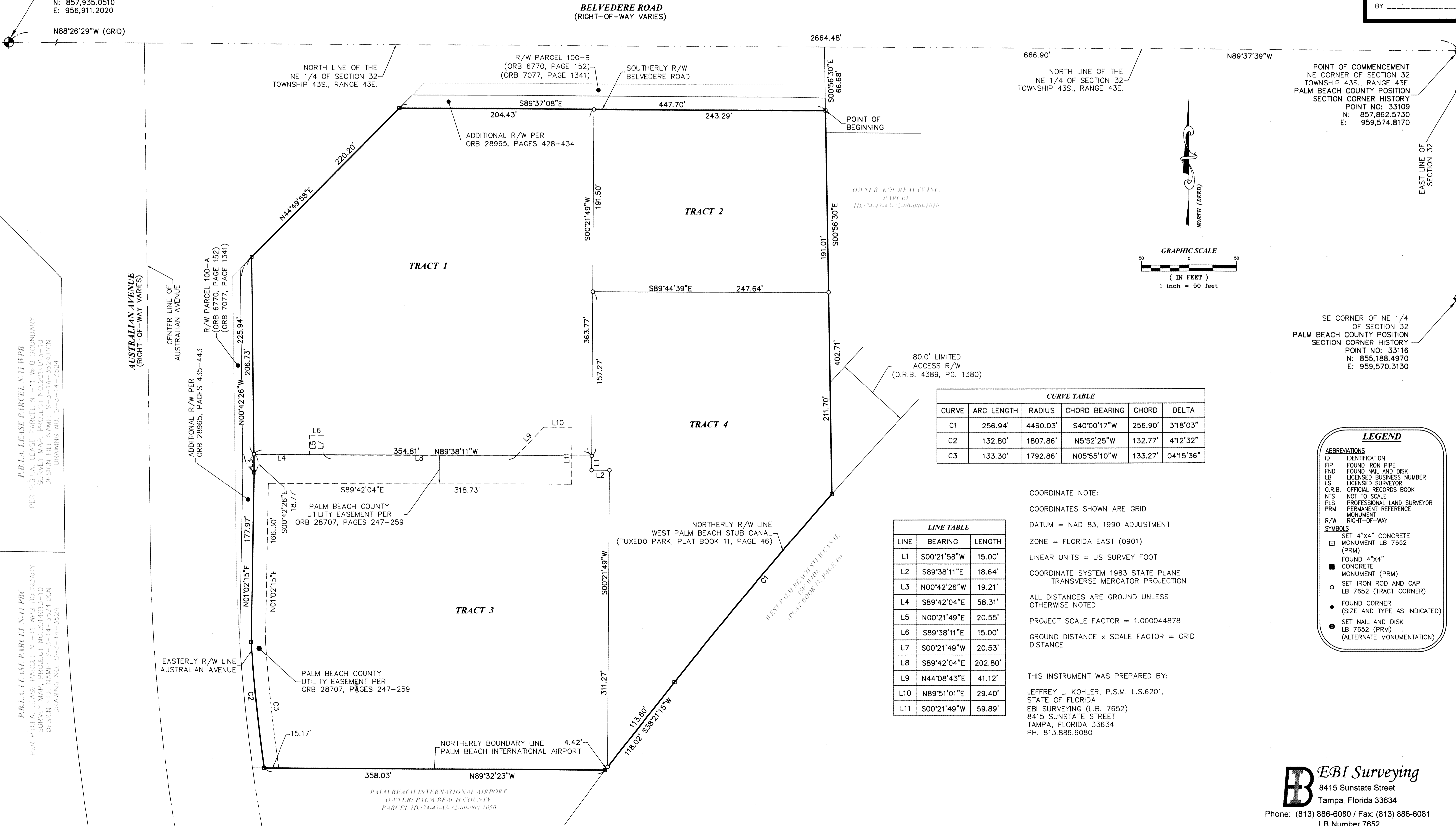
# 147

COUNTY OF PALM BEACH  
STATE OF FLORIDA  
THIS PLAT WAS FILED FOR RECORD AT  
THIS \_\_\_\_ DAY OF \_\_\_\_  
20\_\_ AND DULY RECORDED IN PLAT  
BOOK No. \_\_\_\_ ON PAGE \_\_\_\_  
SHARON R. BOCK, CLERK AND  
COMPTROLLER  
BY \_\_\_\_\_

NW CORNER OF NE 1/4  
OF SECTION 32  
PALM BEACH COUNTY POSITION  
SECTION CORNER HISTORY  
POINT NO: 33110  
N: 857,935.0510  
E: 956,911.2020

POINT OF COMMENCEMENT  
NE CORNER OF SECTION 32  
TOWNSHIP 43S., RANGE 43E.  
PALM BEACH COUNTY POSITION  
SECTION CORNER HISTORY  
POINT NO: 33109  
N: 857,862.5730  
E: 959,574.8170

SE CORNER OF NE 1/4  
OF SECTION 32  
PALM BEACH COUNTY POSITION  
SECTION CORNER HISTORY  
POINT NO: 33116  
N: 855,188.4970  
E: 959,570.3130



P.B.L. LEASE PARCEL N-11 B/B  
PER P.B.L. LEASE PARCEL N-11 WPB BOUNDARY  
SURVEY MAP, PROJECT NO. 2014013-10  
DESIGN FILE NAME: S-3-14-3524.DGN  
DRAWING NO. S-3-14-3524

P.B.L. LEASE PARCEL N-11 B/C  
PER P.B.L. LEASE PARCEL N-11 WPB BOUNDARY  
SURVEY MAP, PROJECT NO. 2014013-10  
DESIGN FILE NAME: S-3-14-3524.DGN  
DRAWING NO. S-3-14-3524

CURVE	ARC LENGTH	RADIUS	CHORD BEARING	CHORD	DELTA
C1	256.94'	4460.03'	S40°00'17"W	256.90'	3'18"03"
C2	132.80'	1807.86'	N5°52'25"W	132.77'	4'12"32"
C3	133.30'	1792.86'	N05°55'10"W	133.27'	04'15"36"

LINE	BEARING	LENGTH
L1	S00°21'58"W	15.00'
L2	S89°38'11"E	18.64'
L3	N00°42'26"W	19.21'
L4	S89°42'04"E	58.31'
L5	N00°21'49"E	20.55'
L6	S89°38'11"E	15.00'
L7	S00°21'49"W	20.53'
L8	S89°42'04"E	202.80'
L9	N44°08'43"E	41.12'
L10	N89°51'01"E	29.40'
L11	S00°21'49"W	59.89'

COORDINATE NOTE:  
COORDINATES SHOWN ARE GRID  
DATUM = NAD 83, 1990 ADJUSTMENT  
ZONE = FLORIDA EAST (0901)  
LINEAR UNITS = US SURVEY FOOT  
COORDINATE SYSTEM 1983 STATE PLANE  
TRANSVERSE MERCATOR PROJECTION  
ALL DISTANCES ARE GROUND UNLESS  
OTHERWISE NOTED  
PROJECT SCALE FACTOR = 1.000044878  
GROUND DISTANCE x SCALE FACTOR = GRID  
DISTANCE

THIS INSTRUMENT WAS PREPARED BY:  
JEFFREY L. KOHLER, P.S.M. L.S.6201,  
STATE OF FLORIDA  
EBI SURVEYING (L.B. 7652)  
8415 SUNSTATE STREET  
TAMPA, FLORIDA 33634  
PH. 813.886.6080

**LEGEND**

ABBREVIATIONS  
ID IDENTIFICATION  
FIP FOUND IRON PIPE  
FND FOUND NAIL AND DISK  
LB LICENSED BUSINESS NUMBER  
LS LICENSED SURVEYOR  
O.R.B. OFFICIAL RECORDS BOOK  
NTS NOT TO SCALE  
PLS PROFESSIONAL LAND SURVEYOR  
PRM PERMANENT REFERENCE MONUMENT  
R/W RIGHT-OF-WAY

SYMBOLS  
SET 4"x4" CONCRETE MONUMENT LB 7652 (PRM)  
FOUND 4"x4" CONCRETE MONUMENT (PRM)  
SET IRON ROD AND CAP LB 7652 (TRACT CORNER)  
FOUND CORNER (SIZE AND TYPE AS INDICATED)  
SET NAIL AND DISK LB 7652 (PRM) (ALTERNATE MONUMENTATION)

**EBI Surveying**  
8415 Sunstate Street  
Tampa, Florida 33634

Phone: (813) 886-6080 / Fax: (813) 886-6081  
LB Number 7652