

151

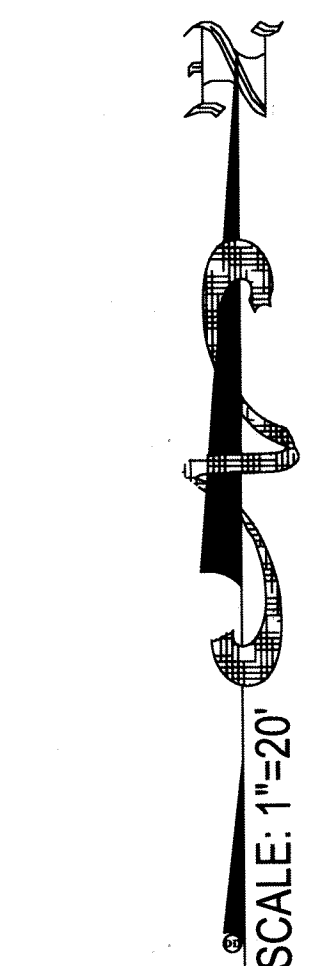
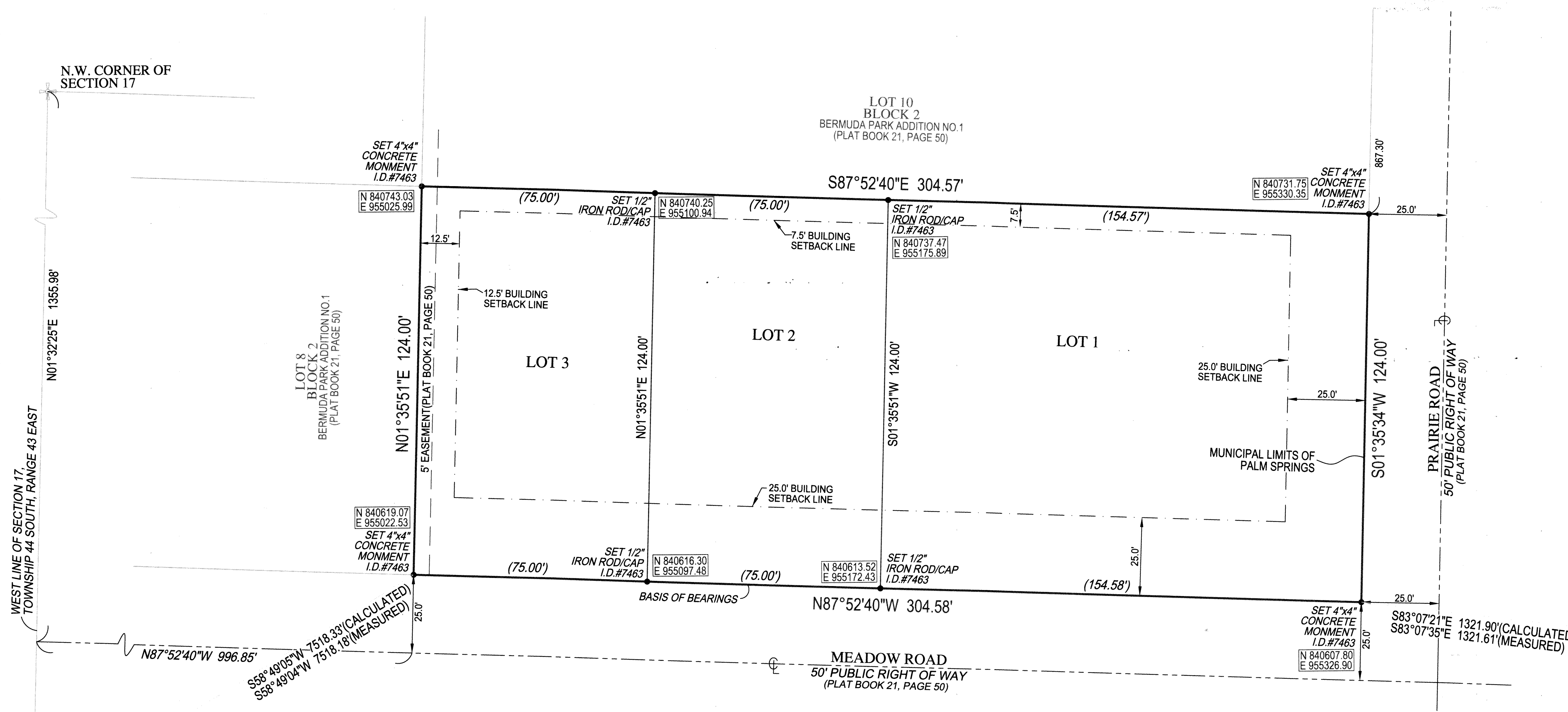
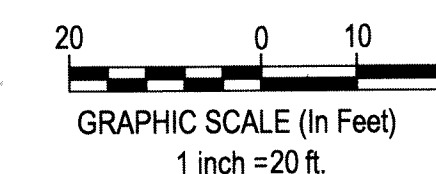
LEUFKENS' SUBDIVISION PLAT

A PLAT OF LOT 9, BLOCK 2, BERMUDA PARK ADDITION NO.1 (PLAT BOOK 21, PAGE 50)
 LYING IN SECTION 17, TOWNSHIP 44 SOUTH, RANGE 43 EAST,
 VILLAGE OF PALM SPRINGS, PALM BEACH COUNTY, FLORIDA

SHEET 2 OF 2

VILLAGE OF PALM SPRINGS
 COUNTY OF PALM BEACH
 STATE OF FLORIDA

THIS PLAT WAS FILED FOR RECORD AT ____ M.
 THIS ____ DAY OF ____ A.D. 2017 AND
 DULY RECORDED IN PLAT BOOK ____ ON PAGES
 THRU ____
 THRU SHARON R. BOCK CLERK AND
 COMPTROLLER BY: ____ D.C.



Ⓝ NATIONAL GEODETIC
 SURVEY
 CONTROL POINT
 PALM BEACH COUNTY
 BRASS DISK IN
 CONCRETE MONUMENT
 "RUNNER" N 836726.40
E 948590.40

ABBREVIATION DESCRIPTION:

A/C	AIR CONDITIONER
☉	CENTERLINE
Δ	CENTRAL / DELTA ANGLE
I.D.	IDENTIFICATION
L	LENGTH
LB	LICENSED BUSINESS
N.A.V.D.	NORTH AMERICAN VERTICAL DATUM
N.G.V.D.	NATIONAL GEODETIC VERTICAL DATUM
OHL	OVERHEAD UTILITIES
P.C.	POINT OF CURVATURE
P.C.C.	POINT OF COMPOUND CURVE
P-K	PARKER KYLON NAIL
P.R.C.	POINT OF REVERSE CURVE
PSM	PROFESSIONAL SURVEYOR MAPPER
P.T.	POINT OF TANGENCY
R	RADIAL / RADIUS
R/W	RIGHT OF WAY

COORDINATES, BEARINGS & DISTANCES NOTES:
 COORDINATES SHOWN ARE GRID COORDINATES
 DATUM= NAD83 (1990 ADJUSTMENT)
 ZONE = FLORIDA EAST ZONE
 LINEAR UNIT = U.S. SURVEY FEET
 COORDINATE SYSTEM = 1983 STATE PLANE TRANSVERSE MERCATOR PROJECTION
 ALL DISTANCE ARE GROUND
 SCALE FACTOR = 1.0001196
 GROUND DISTANCE X SCALE FACTOR = GRID DISTANCE
 ROTATION = 00°00'10" CLOCKWISE (GRID BEARING TO DEED BEARING)

Ⓝ NATIONAL GEODETIC
 SURVEY
 CONTROL POINT
 PALM BEACH COUNTY
 BRASS DISK IN
 CONCRETE MONUMENT
 "POLICE S 1" N 840449.50
E 956639.29

JOB#: C-14183
 DRAWN BY: D.S.D.

6250 N. MILITARY TRAIL, SUITE 102
 WEST PALM BEACH, FL 33407
 PHONE (561) 640-4800
 FACSIMILE (561) 640-0576

COMPASS
 SURVEYING
 WWW.COMPASSSURVEYING.NET

LB #7463