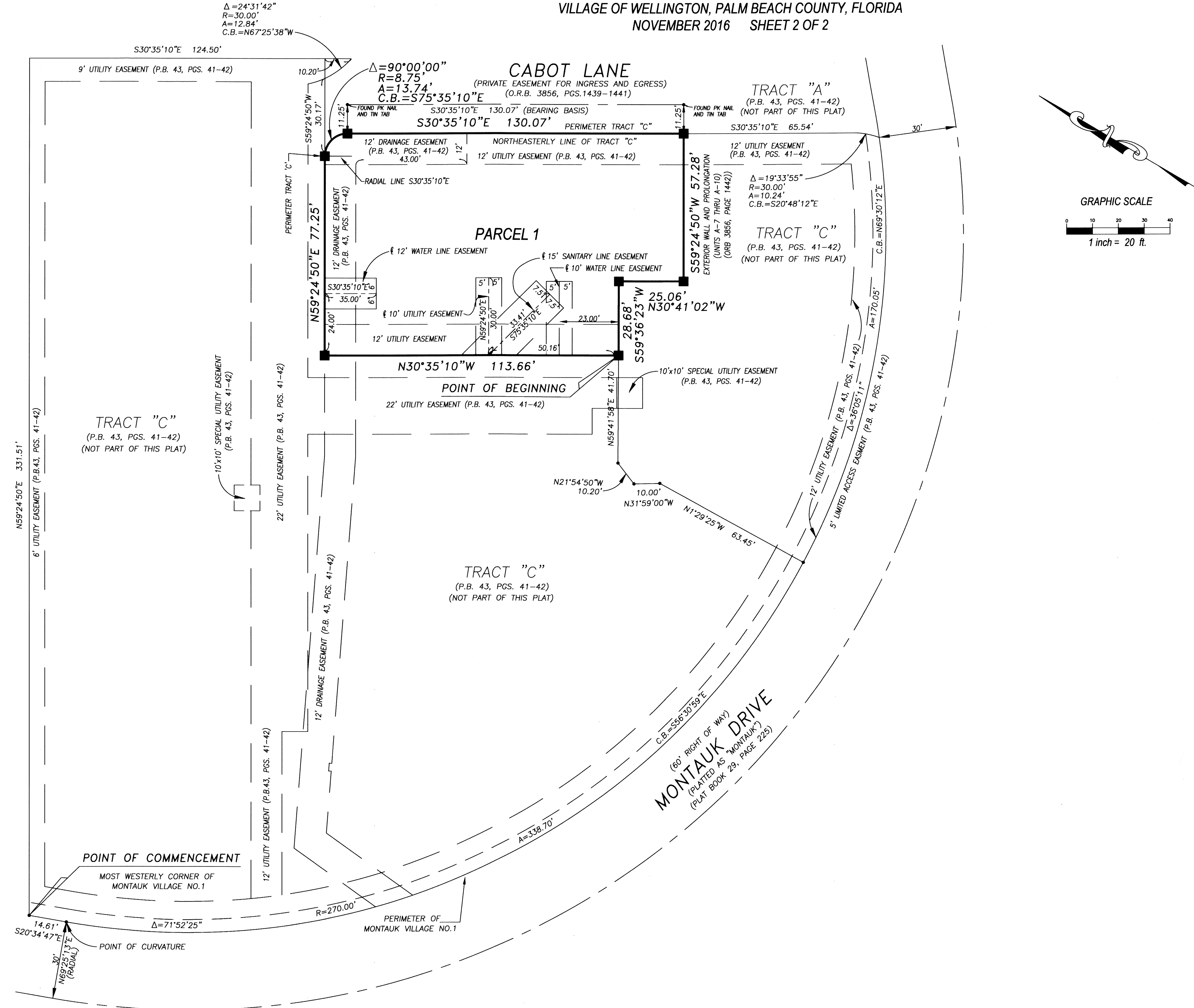


# MISSION FARMS EVERGLADES

BEING A PORTION OF TRACT "C", MONTAUK VILLAGE NO.1, AS RECORDED IN PLAT BOOK 43, PAGES 41 AND 42, OF THE PUBLIC RECORDS OF PALM BEACH COUNTY, FLORIDA. LYING IN SECTION 10, TOWNSHIP 44 SOUTH, RANGE 41 EAST, VILLAGE OF WELLINGTON, PALM BEACH COUNTY, FLORIDA  
NOVEMBER 2016 SHEET 2 OF 2

STATE OF FLORIDA  
COUNTY OF PALM BEACH  
THIS PLAT HAS BEEN FILED FOR  
RECORD AT \_\_\_\_\_  
THIS \_\_\_\_\_ DAY OF \_\_\_\_\_, 201\_\_  
AND DULY RECORDED IN PLAT  
BOOK \_\_\_\_\_  
ON PAGE \_\_\_\_\_  
SHARON R. BOCK,  
CLERK & COMPTROLLER  
PALM BEACH COUNTY  
BY: \_\_\_\_\_



\* ABBREVIATIONS:  
PSM = FLORIDA LICENSED SURVEYOR & MAPPER  
LB = LICENSED BUSINESS  
PB = PLAT BOOK  
ORB = OFFICIAL RECORD BOOK  
PG = PAGE  
SQ. FT. = SQUARE FEET  
A = ARC  
R = RADIUS  
C.B. = CHORD BEARING

\* PREPARING SURVEYOR & MAPPER STATEMENT:  
THIS INSTRUMENT WAS PREPARED BY GINO FURLANO,  
P.S.M. # 5044, STATE OF FLORIDA,  
IN AND FOR THE OFFICES OF PM SURVEYING, AT  
4546 CAMBRIDGE STREET, WEST PALM BEACH, FLORIDA, 33415.  
CERTIFICATE OF AUTHORIZATION # 6678

- LEGEND
- SET 4"x 4" CONCRETE MONUMENT AND BRASS DISK "LB 6788"
  - ⊙ SET 1/2" IRON ROD AND CAP "LB 6788"
  - FOUND 4"x 4" CONCRETE MONUMENT (PERMANENT REFERENCE MONUMENT)
  - FOUND NAIL AND DISK
  - △ CENTRAL ANGLE

PM SURVEYING  
4546 CAMBRIDGE STREET  
WEST PALM BEACH, FL. 33415  
(561) 478-7764 FAX 478-1094  
VISIT US AT PMSURVEYING.NET  
JOB # 14010053