

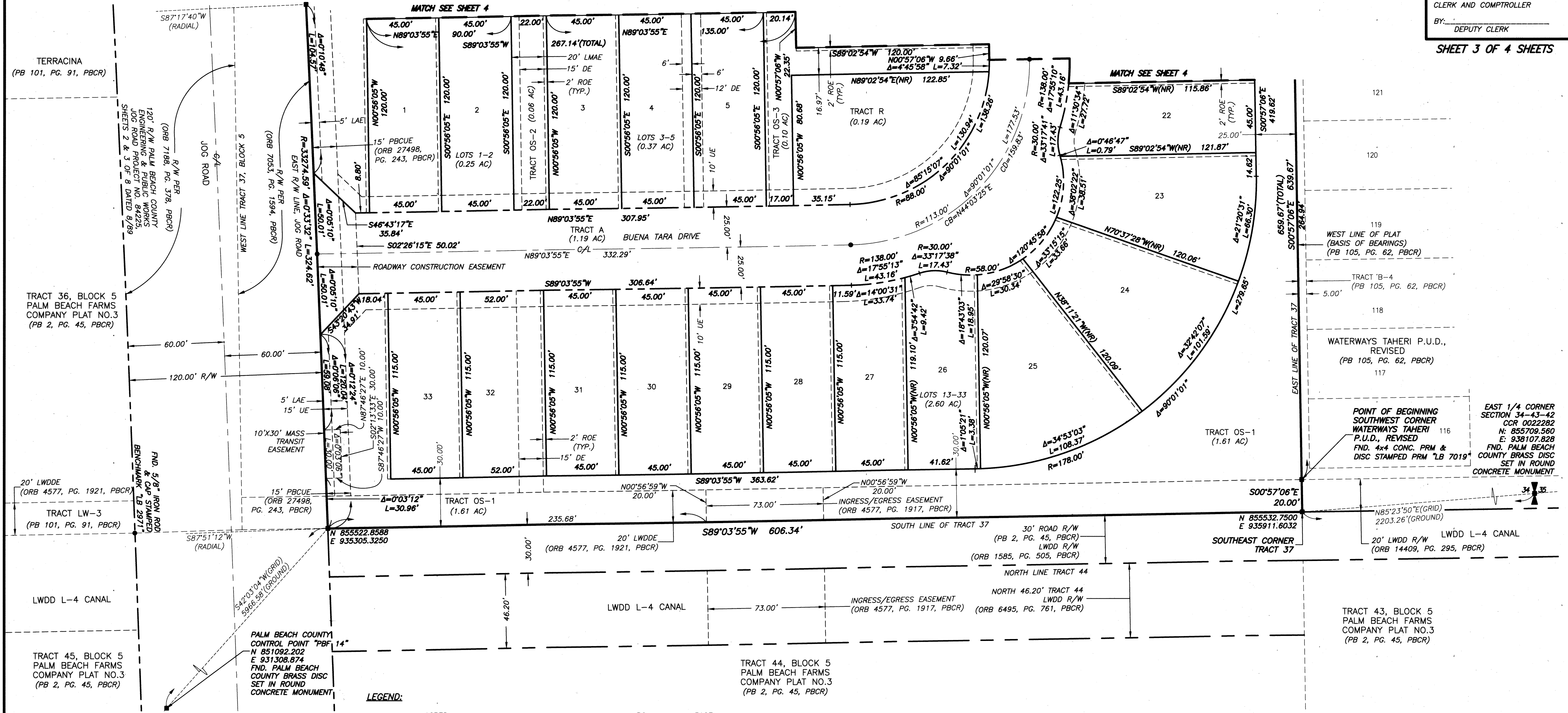
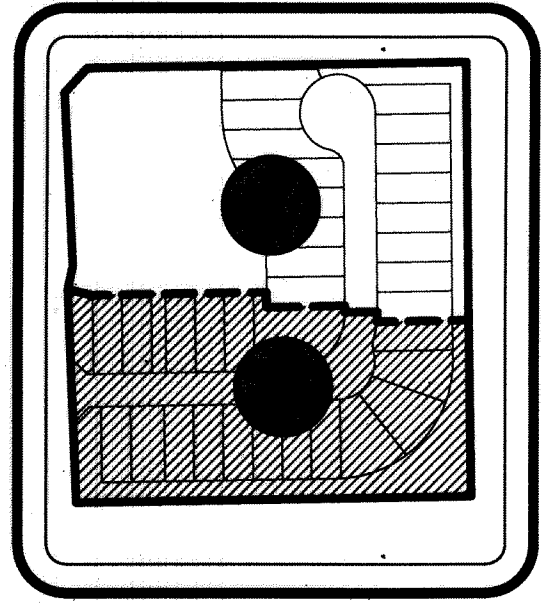
# VILLA TARA

BEING A REPLAT OF TRACT 37, BLOCK 5, PALM BEACH FARMS COMPANY PLAT NO. 3, RECORDED IN PLAT BOOK 2, PAGES 45 THROUGH 54, LESS THOSE PORTIONS CONVEYED TO PALM BEACH COUNTY FOR RIGHT-OF-WAY PURPOSES, RECORDED IN OFFICIAL RECORDS BOOK 7053, AT PAGE 1594 AND OFFICIAL RECORDS BOOK 14551, AT PAGE 1379, ALL BEING OF THE PALM BEACH COUNTY PUBLIC RECORDS, SAID LANDS LYING AND SITUATE IN SECTION 34, TOWNSHIP 43 SOUTH, RANGE 42 EAST, PALM BEACH COUNTY, FLORIDA.

# 195

State of Florida }  
County of Palm Beach } SS  
THIS PLAT WAS FILED FOR RECORD AT \_\_\_\_\_ M.  
THIS \_\_\_\_\_ DAY OF \_\_\_\_\_ A.D. 2017 AND DULY RECORDED  
IN PLAT BOOK \_\_\_\_\_ THROUGH \_\_\_\_\_ ON PAGES \_\_\_\_\_ THROUGH \_\_\_\_\_  
SHARON R. BOCK  
CLERK AND COMPTROLLER  
BY: \_\_\_\_\_  
DEPUTY CLERK

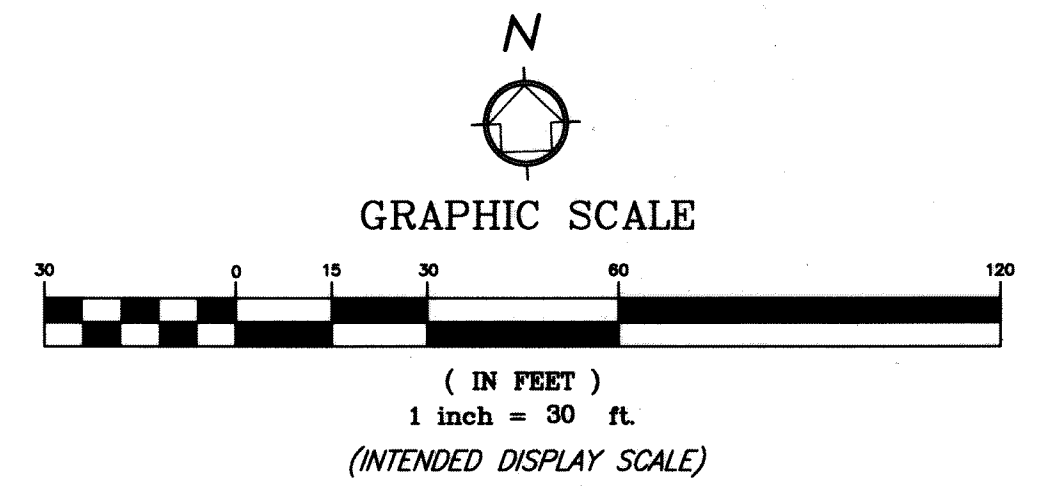
SHEET 3 OF 4 SHEETS



### LEGEND:

- AC = ACRES
- CB = CHORD BEARING
- CD = CHORD DISTANCE
- C/L = CENTER LINE
- CCR = CERTIFIED CORNER RECORD
- CONC. = CONCRETE
- DE = DRAINAGE EASEMENT
- Δ = DELTA (CENTRAL ANGLE)
- FND. = FOUND
- L = LENGTH OF ARC
- LB = LICENSED BUSINESS
- LBE = LANDSCAPE BUFFER EASEMENT
- LME = LAKE MAINTENANCE EASEMENT
- LMAE = LAKE MAINTENANCE ACCESS EASEMENT
- LWDD = LAKE WORTH DRAINAGE DISTRICT
- LWDD E = LAKE WORTH DRAINAGE DISTRICT EASEMENT
- (NR) = NON-RADIAL
- ORB = OFFICIAL RECORDS BOOK
- PG. = PAGE
- PBCR = PALM BEACH COUNTY RECORDS
- PBCUE = PALM BEACH COUNTY UTILITY EASEMENT
- PB = PLAT BOOK
- = PERMANENT CONTROL POINT (PCP), SET NAIL AND DISC STAMPED "LB 7055"
- PRM = PERMANENT REFERENCE MONUMENT
- ROE = ROOF OVERHANG EASEMENT
- R = RADIUS
- R/W = RIGHT-OF-WAY
- SF = SQUARE FEET
- (TYP.) = TYPICAL
- UE = UTILITY EASEMENT
- = SET 4"x4" CONCRETE PRM & ALUMINUM DISC STAMPED "LB 7055 PRM" UNLESS OTHERWISE NOTED
- ① = SHEET NUMBER

NOTE: LOT LINES INTERSECTING CIRCULAR CURVES ARE RADIAL UNLESS OTHERWISE NOTED.



**WGI**  
Wantman Group, Inc.  
Engineering ♦ Planning ♦ Surveying ♦ Environmental  
2035 VISTA PARKWAY, SUITE 100, WEST PALM BEACH, FL 33411.  
(866) 909-2220 phone (561) 687-1110 fax  
CERTIFICATE OF AUTHORIZATION No. LB 7055  
ORLANDO - PORT ST. LUCIE - TAMPA  
THIS INSTRUMENT WAS PREPARED BY PATRICK MEEDS, P.S.M.  
PROFESSIONAL SURVEYOR AND MAPPER, LICENSE NO. 4728  
FOR THE FIRM: WANTMAN GROUP, INC.