

200

SHEET 2 OF 2

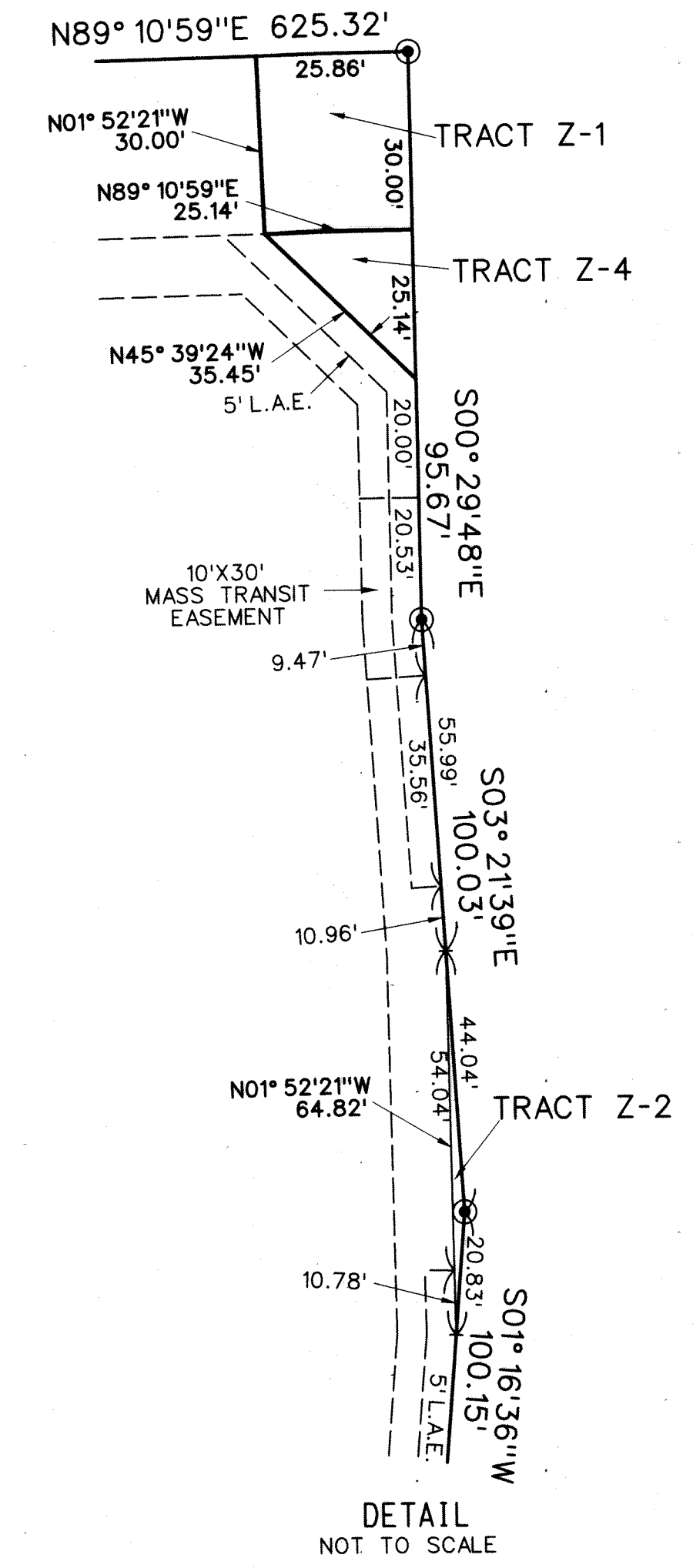
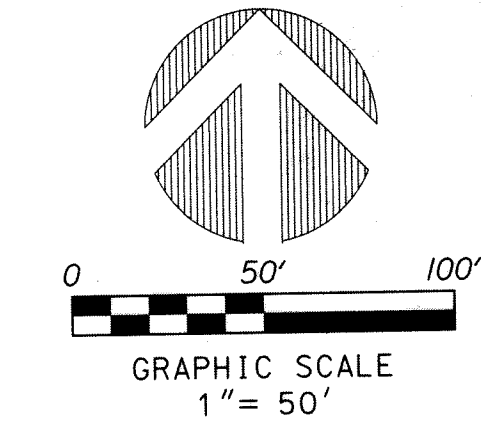
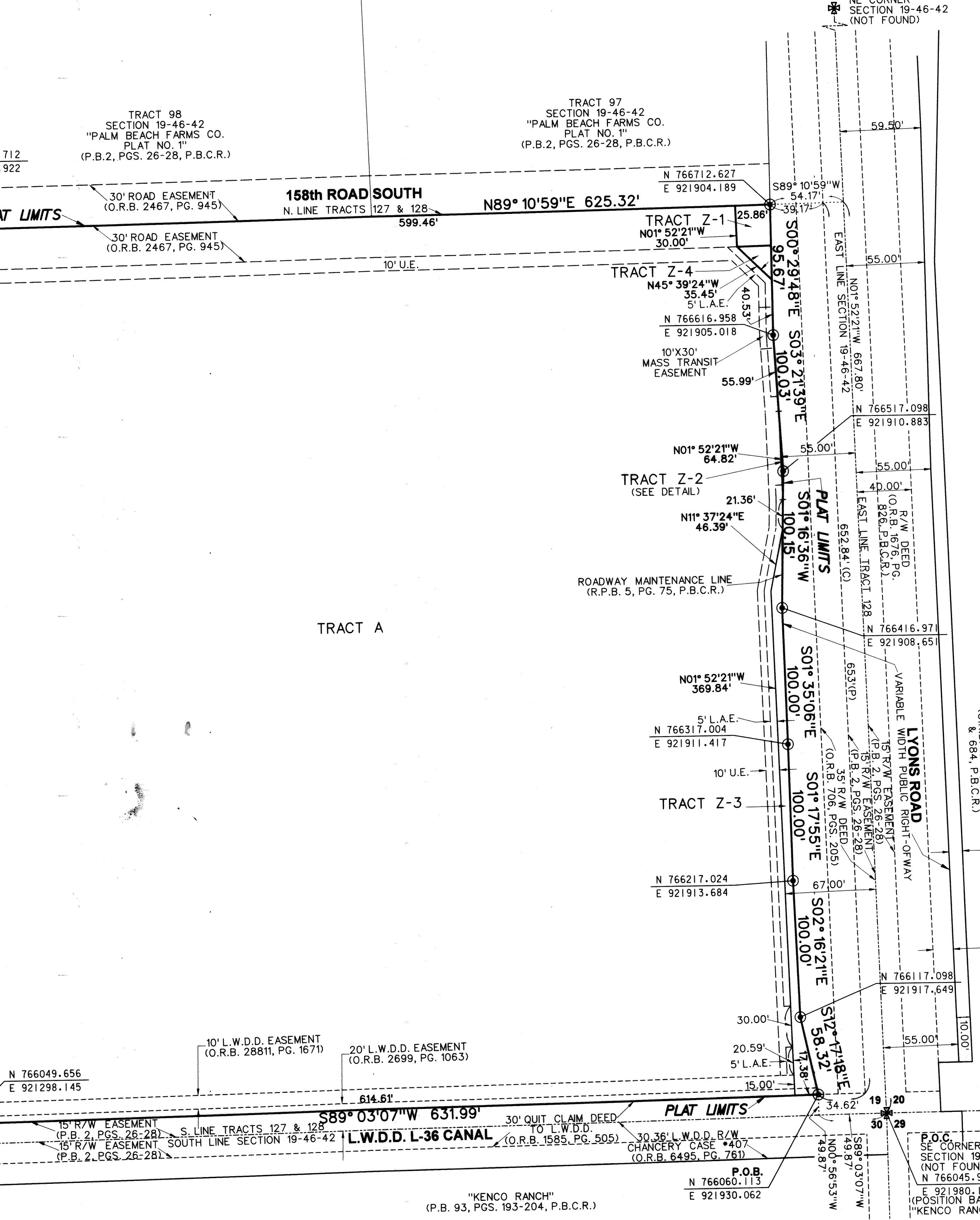
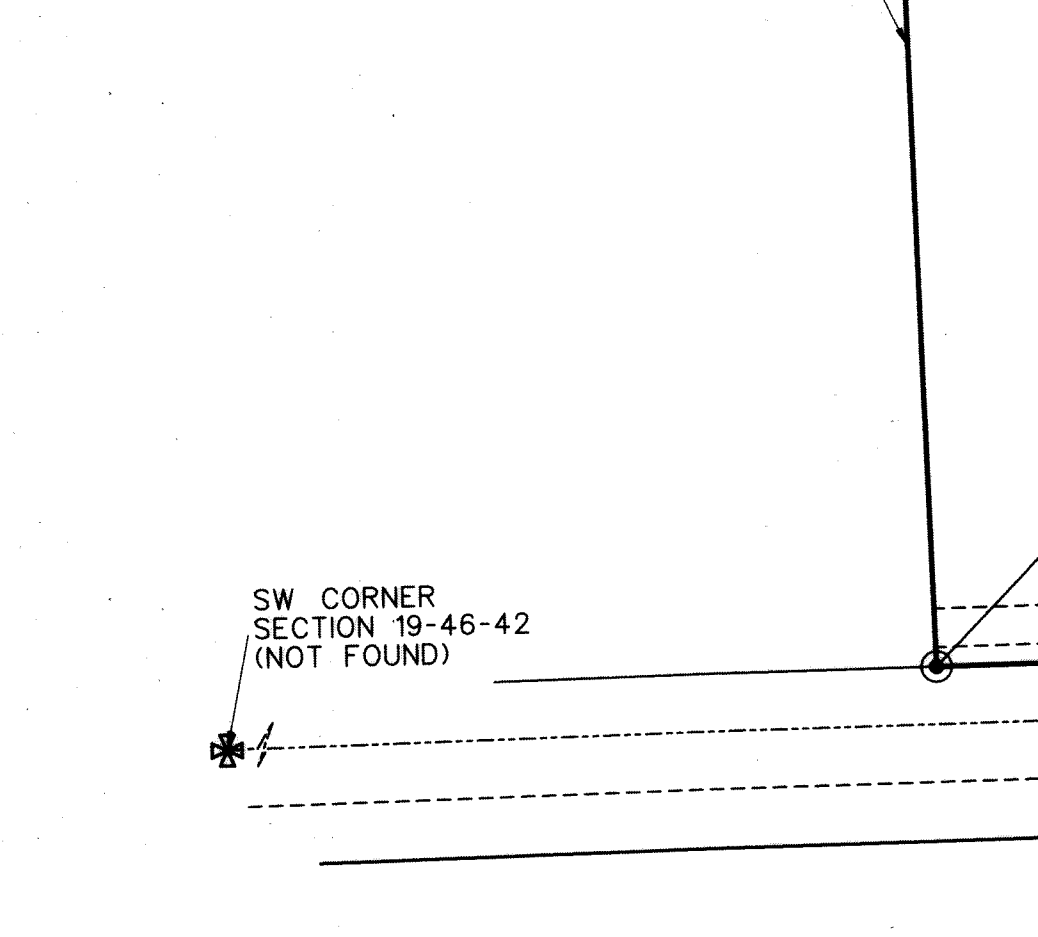
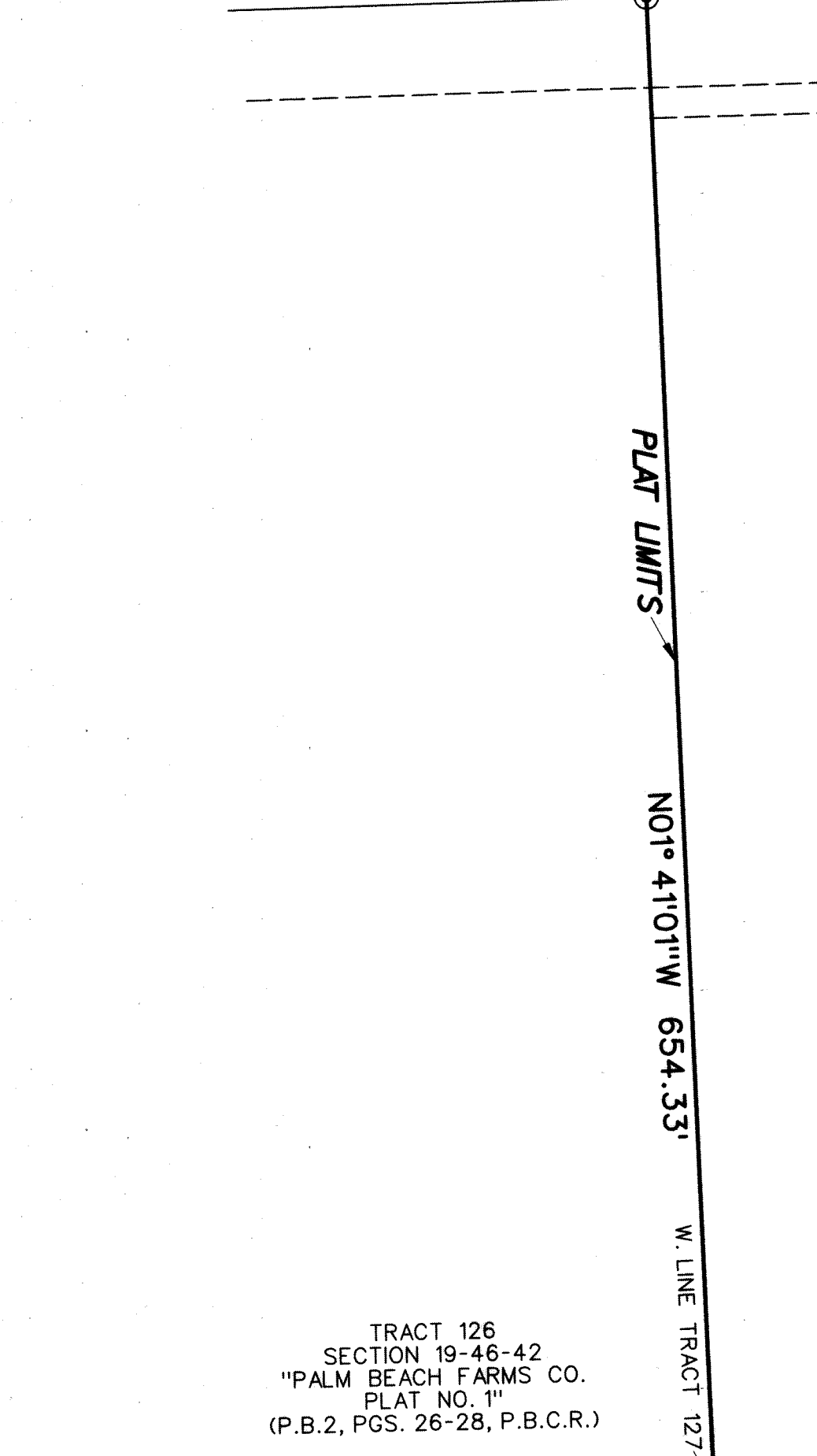
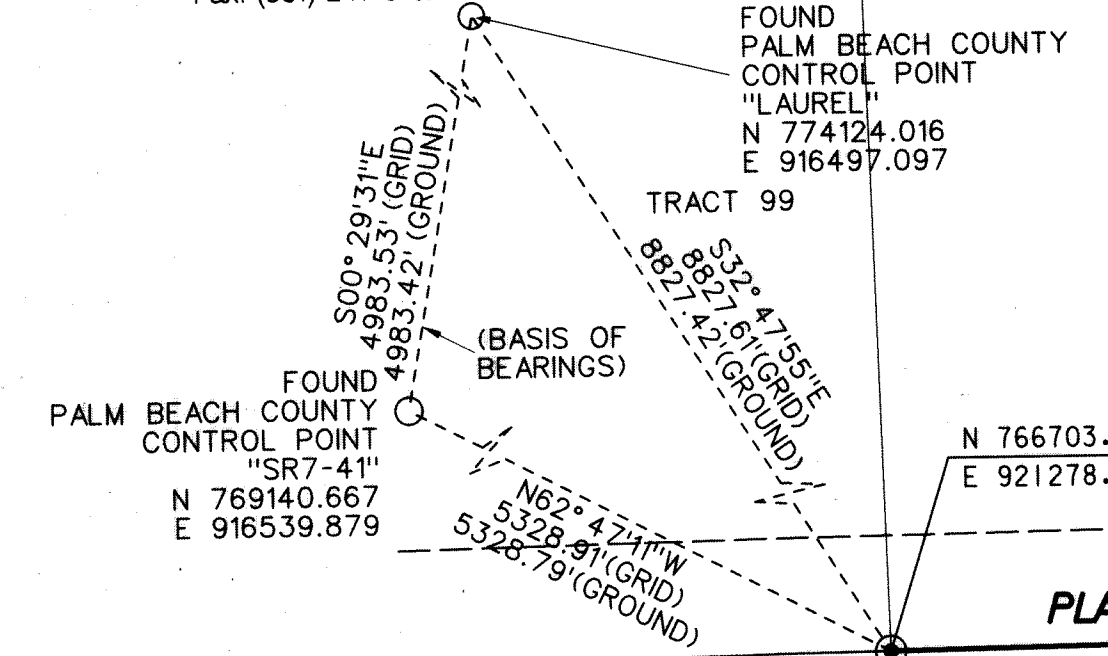
DIVINE SAVIOR ACADEMY

BEING A REPLAT OF A PORTION OF TRACTS 127 AND 128, IN SECTION 19, TOWNSHIP 46 SOUTH, RANGE 42 EAST, "PALM BEACH FARMS CO. PLAT NO. 1", ACCORDING TO THE PLAT THEREOF, AS RECORDED IN PLAT BOOK 2 AT PAGES 26 THROUGH 28 OF THE PUBLIC RECORDS OF PALM BEACH COUNTY, FLORIDA.
PALM BEACH COUNTY, FLORIDA.

16110 PL1000-404

PERIMETER

SURVEYING & MAPPING
Certificate of Authorization No. LB7264
Prepared by: Jeff S. Hodapp, P.S.M.
947 Clint Moore Road
Boca Raton, Florida 33487
Tel: (561) 241-9988
Fax: (561) 241-5182



LEGEND:

- SET P.R.M. (UNLESS OTHERWISE NOTED)-4" X4" CONC. MON. WITH ALUMINUM DISK STAMPED P.R.M. LB7264
 -
- ABBREVIATIONS:**
- L.A.E. LIMITED ACCESS EASEMENT
 - L.B. LICENSED BUSINESS
 - L.S. LICENSED SURVEYOR
 - L.W.D.D. LAKE WORTH DRAINAGE DISTRICT
 - MON. MONUMENT
 - O.R.B. OFFICIAL RECORDS BOOK
 - P.B. PLAT BOOK
 - P.B.C. PALM BEACH COUNTY
 - P.B.C.R. PALM BEACH COUNTY RECORDS
 - P.C. PAGE
 - P.O.B. POINT OF BEGINNING
 - P.O.C. POINT OF COMMENCEMENT
 - P.R.M. PERMANENT REFERENCE MONUMENT
 - P.S.M. PROFESSIONAL SURVEYOR & MAPPER
 - R.P.B. ROAD PLAT BOOK
 - R/W RIGHT-OF-WAY
 - SEC. SECTION
 - SECTION 19-46-42 SECTION 19, TOWNSHIP 46 SOUTH, RANGE 42 EAST
 - U.E. UTILITY EASEMENT
 - (C) CALCULATED DIMENSION
 - (P) PLATTED DIMENSION

P.O.C. SE CORNER SECTION 19-46-42 (NOT FOUND) N 766045.940 E 921980.171 (POSITION BASED ON "KENCO RANCH" PLAT)

"KENCO RANCH" (P.B. 93, PGS. 193-204, P.B.C.R.)