

0930.003

ANDALUCIA PUD PLAT 3

LYING IN SECTIONS 29, AND 30, TOWNSHIP 44 SOUTH, RANGE 42 EAST, PALM BEACH COUNTY, FLORIDA,
BEING A REPLAT OF TRACTS "FD-3", "FD-4", "FD-5" AND "FD-6", ANDALUCIA PUD PLAT 2
AS RECORDED IN PLAT BOOK 123, PAGES 96 THROUGH 100, INCLUSIVE,
PUBLIC RECORDS OF PALM BEACH COUNTY, FLORIDA.

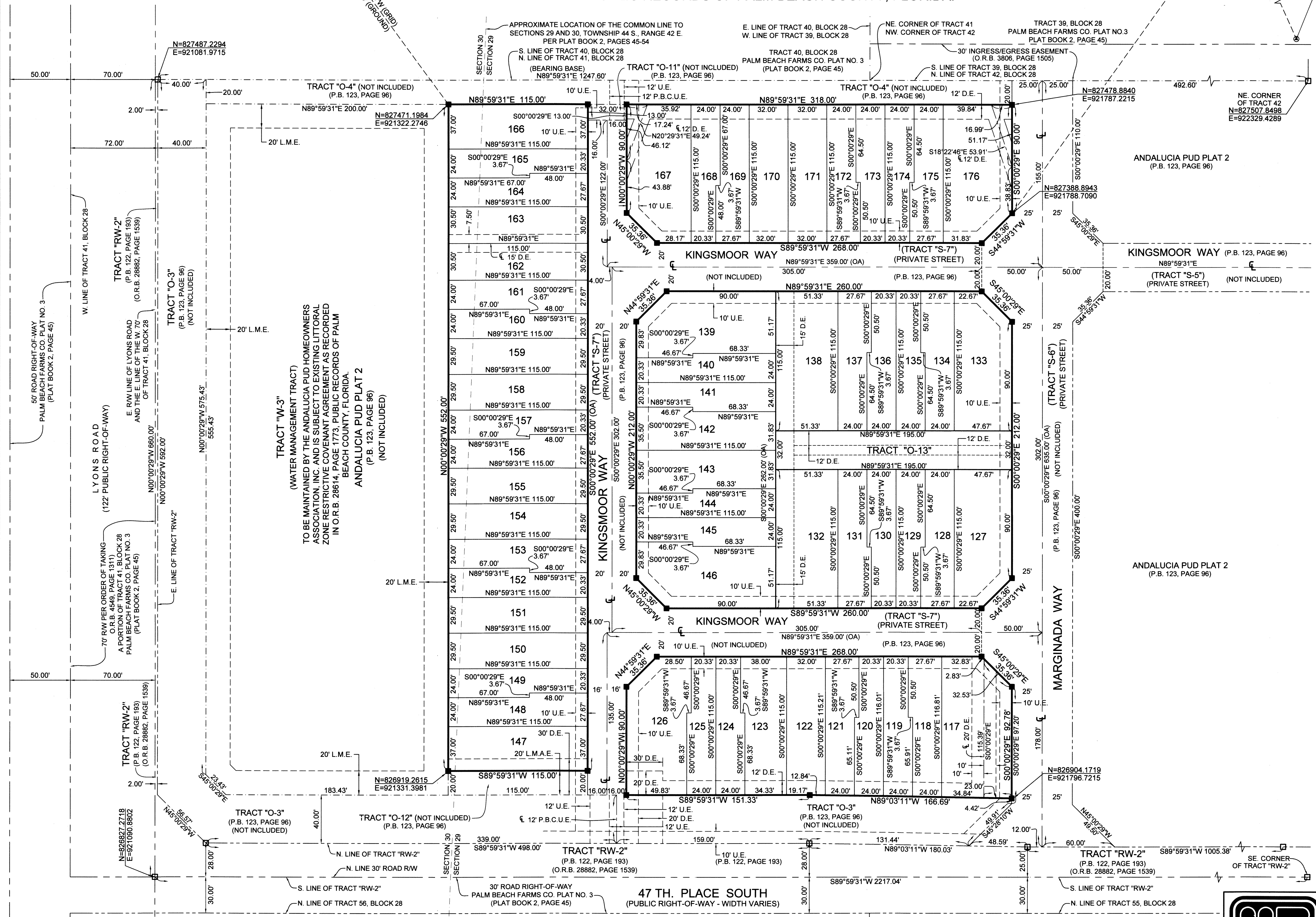
FD. P.B.C. BRASS DISK
STAMPED "LAKE 441"
P.B.C. POSITION
N = 830770.7890
E = 916032.4020

S89°23'23"W (GRID)
2833.66' (GROUND)
FD. P.B.C. BRASS DISK
STAMPED "HUNTING"
P.B.C. POSITION
N = 830800.9690
E = 918865.9680

FD. P.B.C. BRASS DISK
STAMPED "SUMMER"
P.B.C. POSITION
N = 830885.4090
E = 924301.1320

FD. P.B.C. BRASS DISK
STAMPED "PBF 35"
P.B.C. POSITION
N = 825752.6020
E = 926621.3940

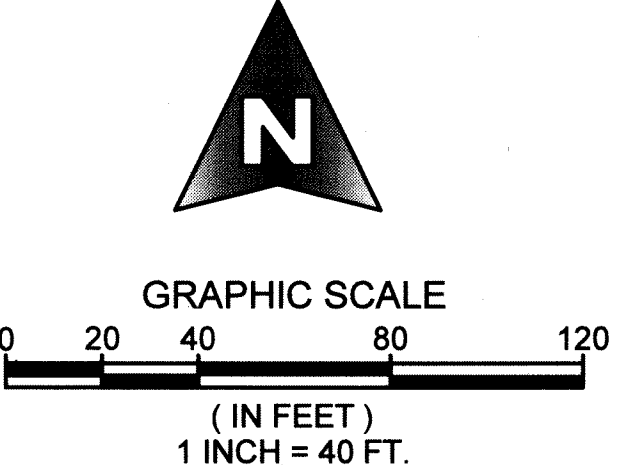
10
COUNTY OF PALM BEACH)
STATE OF FLORIDA) SS
THIS PLAT WAS FILED FOR RECORD AT)
M. THIS) DAY OF)
RECORDED IN PLAT BOOK NO.)
ON PAGE) THRU)
SHARON R. BOCK,
CLERK AND COMPTROLLER
BY: _____, D.C.



TRACT "W-3"
(WATER MANAGEMENT TRACT)
TO BE MAINTAINED BY THE ANDALUCIA PUD HOMEOWNERS
ASSOCIATION, INC. AND IS SUBJECT TO EXISTING LITTORAL
ZONE RESTRICTIVE COVENANT AGREEMENT AS RECORDED
IN O.R.B. 28614, PAGE 1773, PUBLIC RECORDS OF PALM
BEACH COUNTY, FLORIDA.
ANDALUCIA PUD PLAT 2
(P.B. 123, PAGE 96)
(NOT INCLUDED)

NOTE:
ALL EASEMENTS AS SHOWN HEREON ARE BASED ON ANDALUCIA PUD
PLAT 2, AS RECORDED IN PLAT BOOK 123, PAGES 96 THROUGH 100,
PUBLIC RECORDS OF PALM BEACH COUNTY, FLORIDA.

COORDINATE NOTE:
STATE PLANE COORDINATES SHOWN ARE GRID DATUM,
NAD 83 1990 ADJUSTMENT, FLORIDA EAST ZONE,
COORDINATE SYSTEM 1983 STATE PLANE, TRANSVERSE
MERCATOR PROJECTION
LINEAR UNIT = US SURVEY FEET
ALL DISTANCES ARE GROUND
SCALE FACTOR = 1.000022328
GROUND DISTANCE X SCALE FACTOR = GRID DISTANCE
N 89°59'31"E (PLAT BEARING) -00°56'20" COUNTER-CLOCKWISE ROTATION
PLAT TO GRID
THE NORTH LINE OF TRACTS 41 AND 42, BLOCK 28, PALM BEACH
FARMS COMPANY PLAT NO. 3 (PLAT BOOK 2, PAGES 45-54)



SHEET 2 OF 2
MICHAEL B. SCHORAH & ASSOCIATES, INC.
1850 FOREST HILL BLVD., SUITE 206
WEST PALM BEACH, FLORIDA 33406
EB# 2438 TEL. (561) 968-0080 FAX. (561) 642-9726 LB# 2438
ANDALUCIA PUD PLAT 3