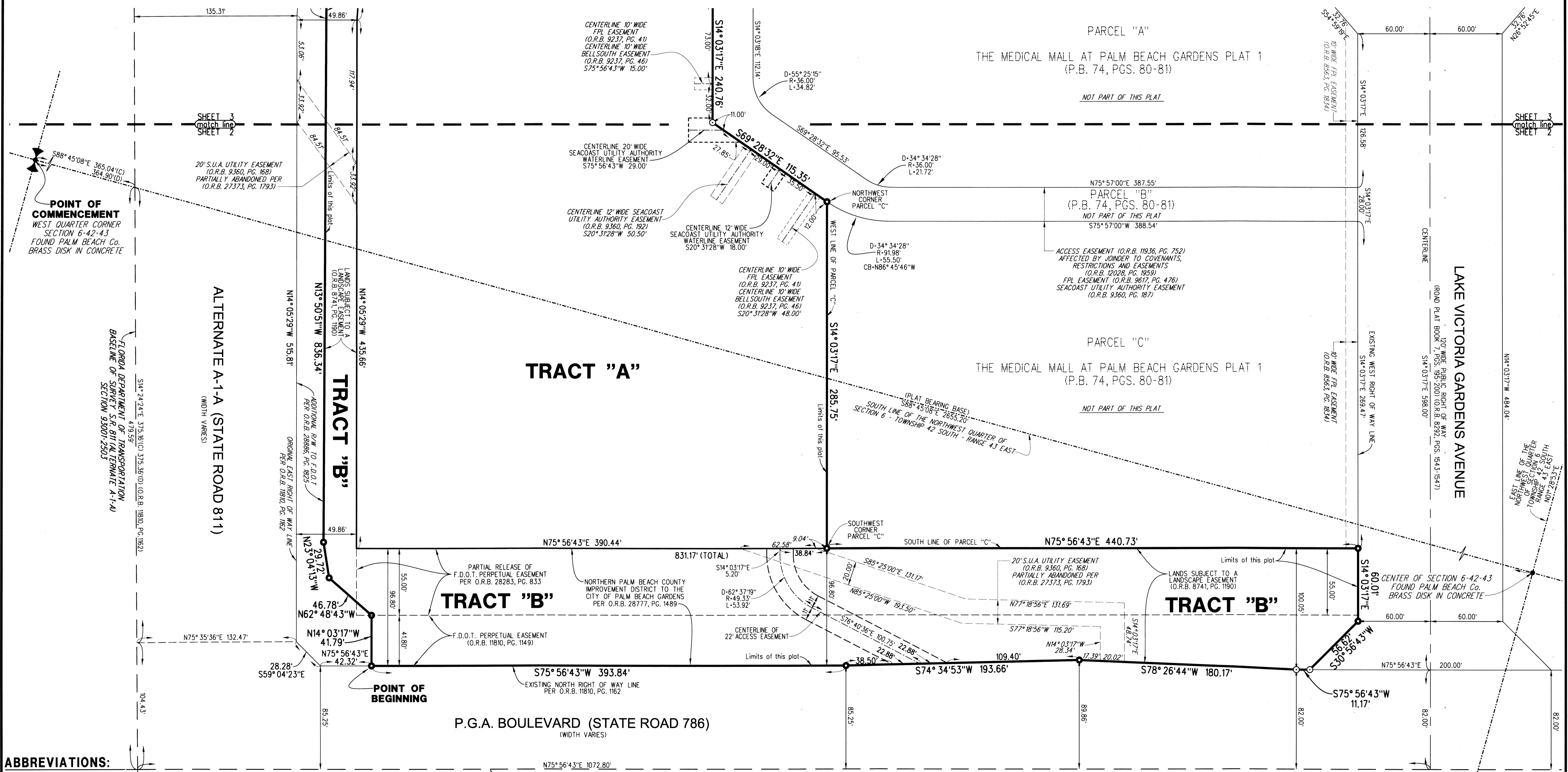
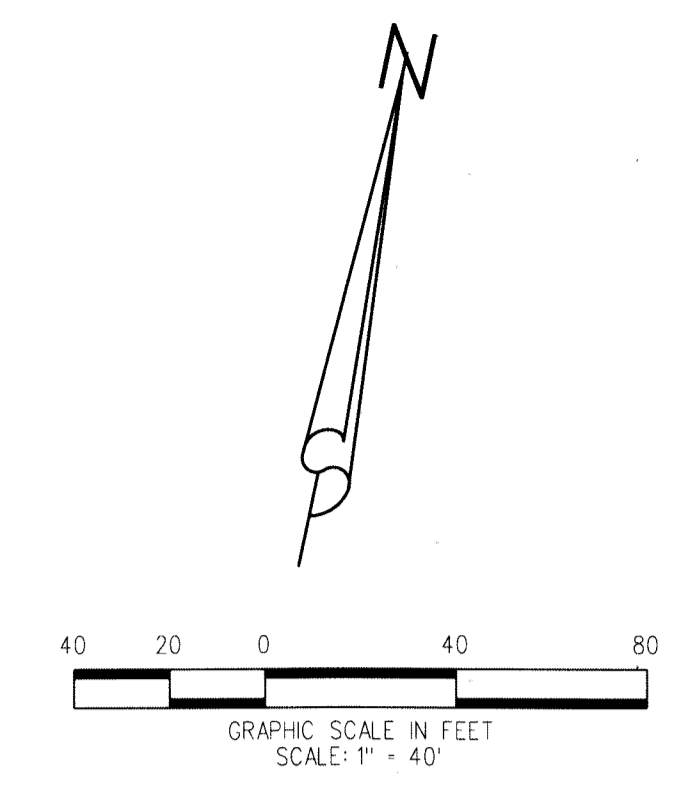
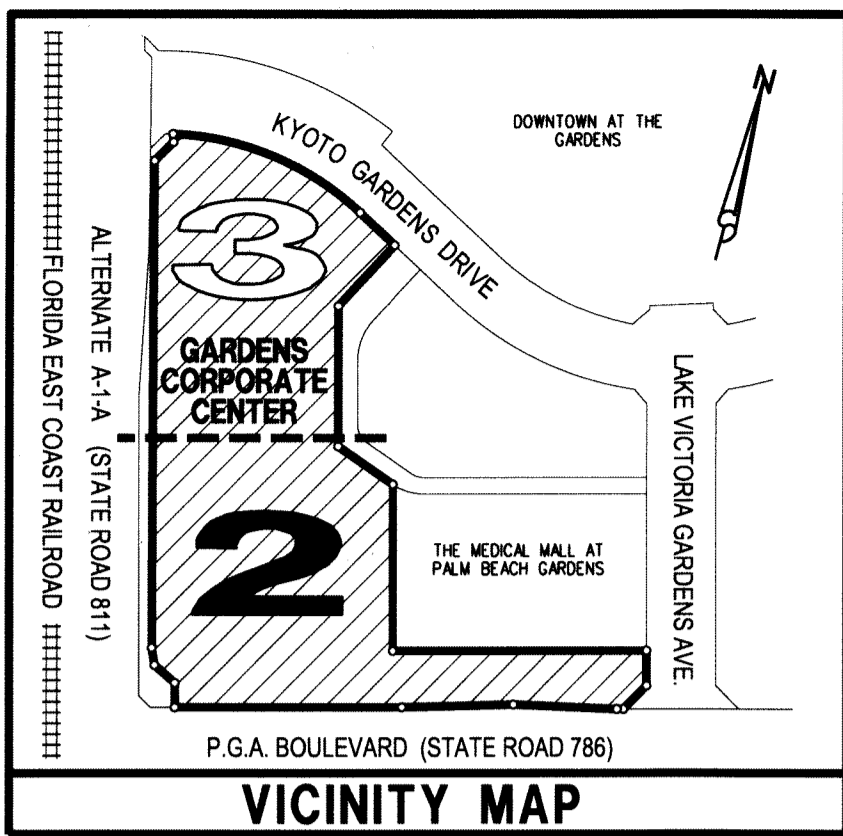


GARDENS CORPORATE CENTER

BEING A PARCEL OF LAND LYING IN SECTION 6, TOWNSHIP 42 SOUTH, RANGE 43 EAST
CITY OF PALM BEACH GARDENS, PALM BEACH COUNTY, FLORIDA

JUNE 2017

SHEET 2 OF 3



ABBREVIATIONS:

- CB = CHORD BEARING
- DELTA = DELTA
- F.D.O.T. = FLORIDA DEPARTMENT OF TRANSPORTATION
- FPL = FLORIDA POWER & LIGHT CO.
- L = ARC LENGTH
- O.R.B. = OFFICIAL RECORD BOOK
- P.B. = PLAT BOOK
- PG. = PAGE
- P.R.M. = PERMANENT REFERENCE MONUMENT
- P.S.M. = PROFESSIONAL SURVEYOR AND MAPPER
- R = RADIUS
- S.U.A. = SEACOAST UTILITY AUTHORITY

AREA TABULATION

DESCRIPTION	SQUARE FEET	ACREAGE
TRACT "A"	287,389	6.598
TRACT "B"	105,774	2.428
TOTAL	393,163	9.026

FLORIDA DEPARTMENT OF TRANSPORTATION
BASELINE OF SURVEY S.R. 786 (P.G.A. BOULEVARD)
RIGHT OF WAY MAP - SECTION 93001-2503

LEGEND:

- = SET 5/8" IRON ROD & METAL CAP - STAMPED "PRM LB 4431" - PERMANENT REFERENCE MONUMENT (P.R.M.), UNLESS OTHERWISE NOTED.
- = SET MAG NAIL & DISK - STAMPED "PRM LB 4431" - PERMANENT REFERENCE MONUMENT (P.R.M.), UNLESS OTHERWISE NOTED.

LIDBERG LAND SURVEYING, INC.

LB4431 675 West Indiantown Road, Suite 200, Jupiter, Florida 33458 TEL: 561-746-8454

CAD. K:\JUST \ 064243 \ 74-80 \ 15-010A-306 \ 15-010A-306.DGN	FB. PG.	JOB 15-010A-306
REF.		DATE APRIL 2017
FLD.		
OFF. CASASUS		
CKD. D.C.L.	SHEET 2 OF 3	DWG. D15-010P