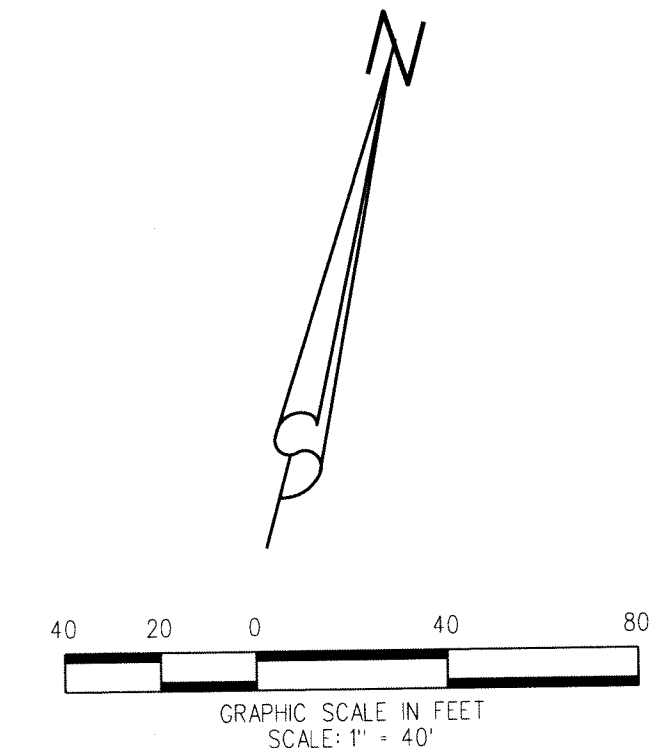
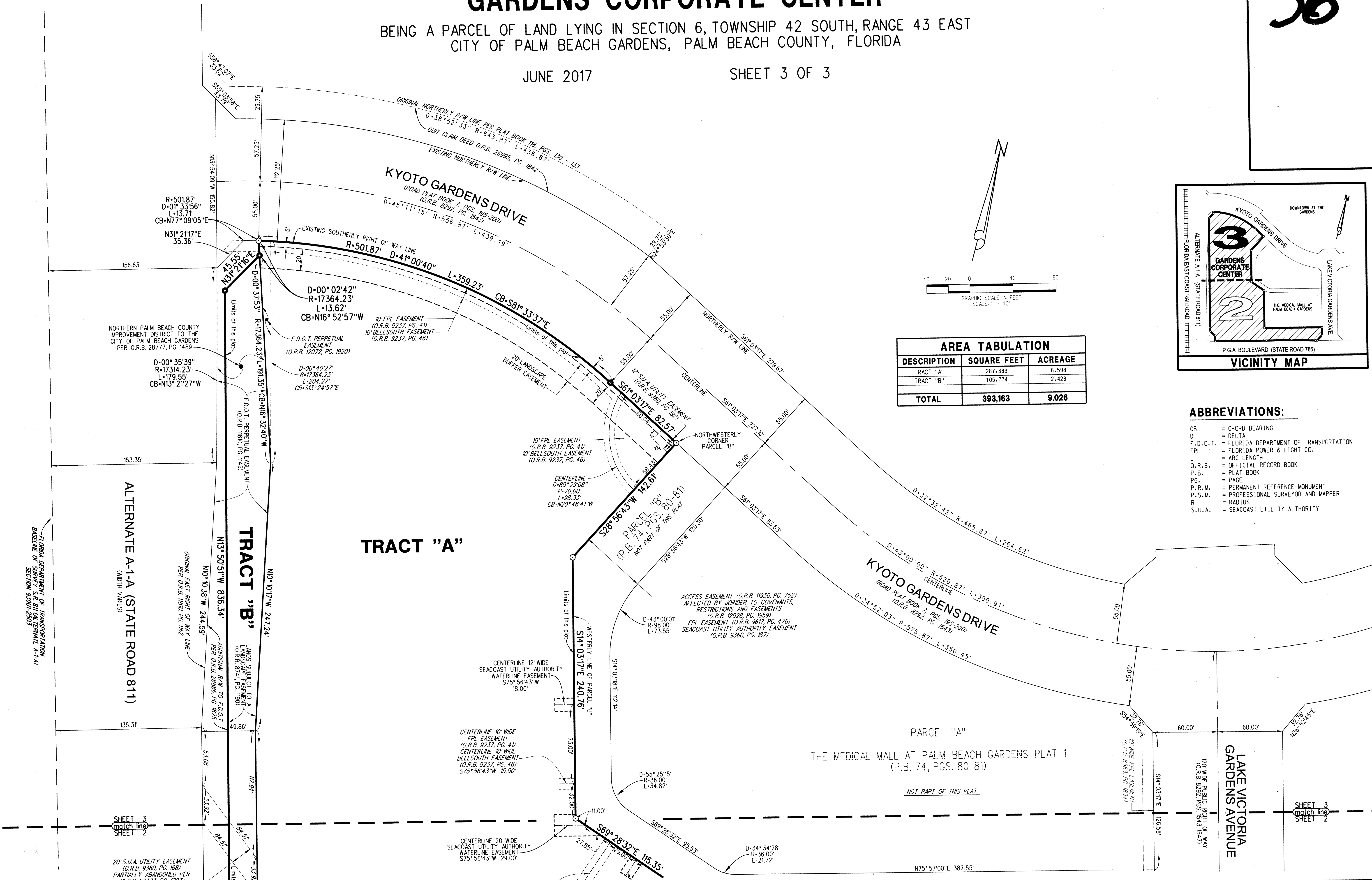


# GARDENS CORPORATE CENTER

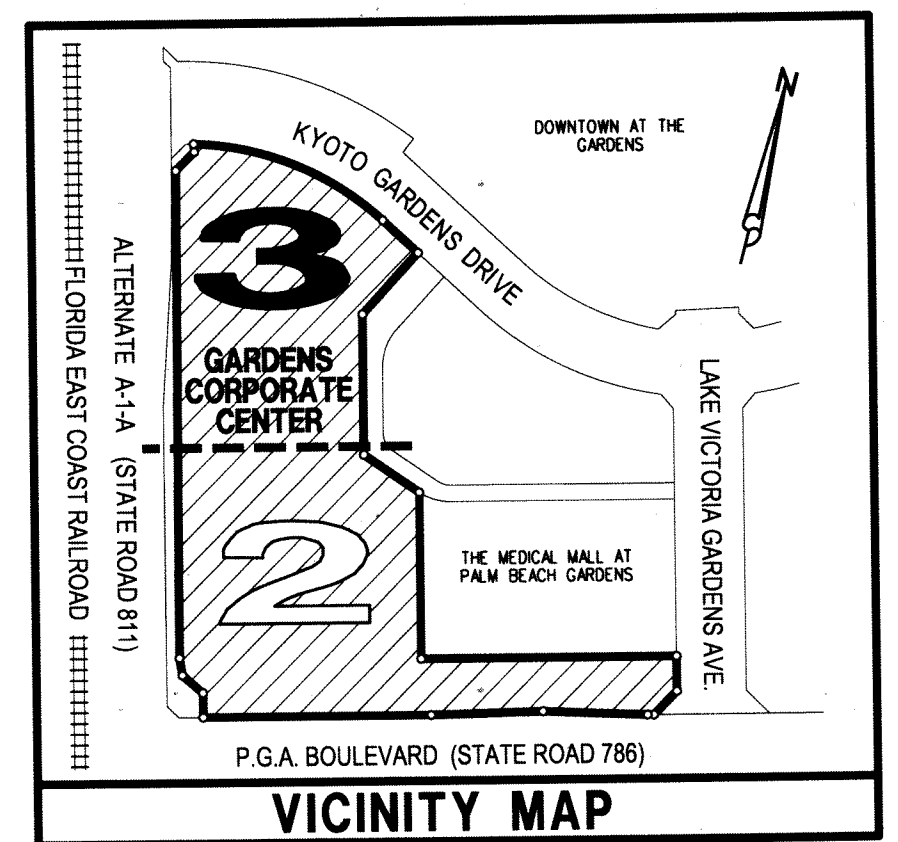
BEING A PARCEL OF LAND LYING IN SECTION 6, TOWNSHIP 42 SOUTH, RANGE 43 EAST  
CITY OF PALM BEACH GARDENS, PALM BEACH COUNTY, FLORIDA

JUNE 2017

SHEET 3 OF 3



AREA TABULATION		
DESCRIPTION	SQUARE FEET	ACREAGE
TRACT "A"	287,389	6.598
TRACT "B"	105,774	2.428
<b>TOTAL</b>	<b>393,163</b>	<b>9.026</b>



- ABBREVIATIONS:**
- CB = CHORD BEARING
  - D = DELTA
  - F.D.O.T. = FLORIDA DEPARTMENT OF TRANSPORTATION
  - FPL = FLORIDA POWER & LIGHT CO.
  - L = ARC LENGTH
  - O.R.B. = OFFICIAL RECORD BOOK
  - P.B. = PLAT BOOK
  - PG. = PAGE
  - P.R.M. = PERMANENT REFERENCE MONUMENT
  - P.S.M. = PROFESSIONAL SURVEYOR AND MAPPER
  - R = RADIUS
  - S.U.A. = SEACOAST UTILITY AUTHORITY

FLORIDA DEPARTMENT OF TRANSPORTATION  
BASELINE OF SURVEY S.A. 811 ALTERNATE A-1-A  
SECTION 93001-2503

ALTERNATE A-1-A (STATE ROAD 811)  
(WIDTH VARIES)

SHEET 3  
MATCH LINE  
SHEET 2

SHEET 3  
MATCH LINE  
SHEET 2

- LEGEND:**
- = SET 5/8" IRON ROD & METAL CAP - STAMPED "PRM LB 4431" - PERMANENT REFERENCE MONUMENT (P.R.M.). UNLESS OTHERWISE NOTED.
  - = SET MAG NAIL & DISK - STAMPED "PRM LB 4431" - PERMANENT REFERENCE MONUMENT (P.R.M.). UNLESS OTHERWISE NOTED.

**LIDBERG LAND SURVEYING, INC.**  
LB4431 675 West Indiantown Road, Suite 200, Jupiter, Florida 33458 TEL. 561-746-8454

CAD:	K:\NUST\064243\74-80\15-010A-306\15-010A-306.DGN		
REF.			
FLD.	FB.	PG.	JOB 15-010A-306
OFF.	CASASUS		DATE APRIL 2017
CKD.	D.C.L.	SHEET 3 OF 3	DWG. DIS-010P