

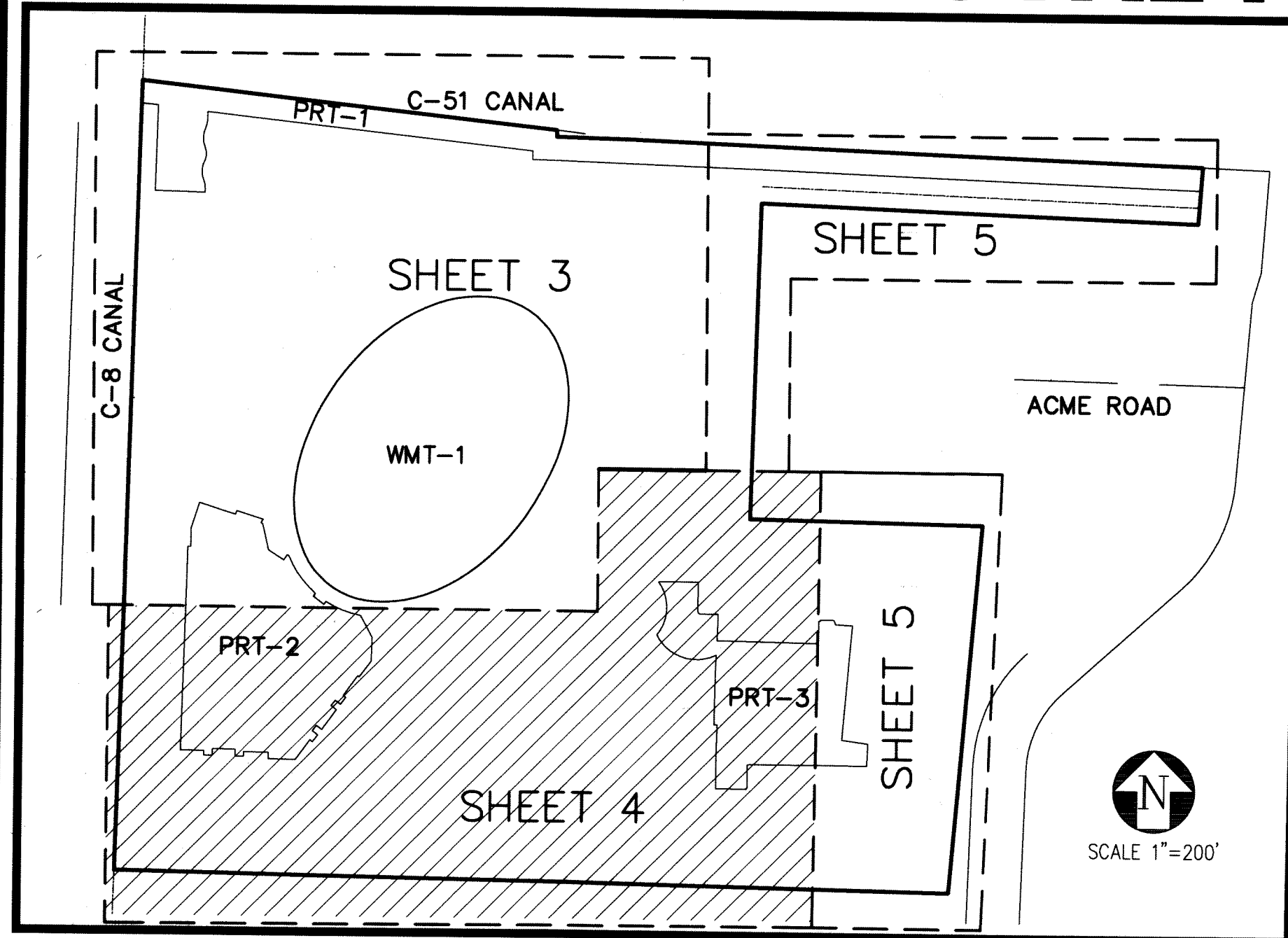
# RD ROYAL PALM BEACH, LLC SR 80 APARTMENT COMPLEX

BEING A PORTION OF SECTION 36, TOWNSHIP 43 SOUTH, RANGE 41 EAST,  
THE VILLAGE OF ROYAL PALM BEACH, PALM BEACH COUNTY, FLORIDA,  
DECEMBER 2016  
SHEET 4 OF 5

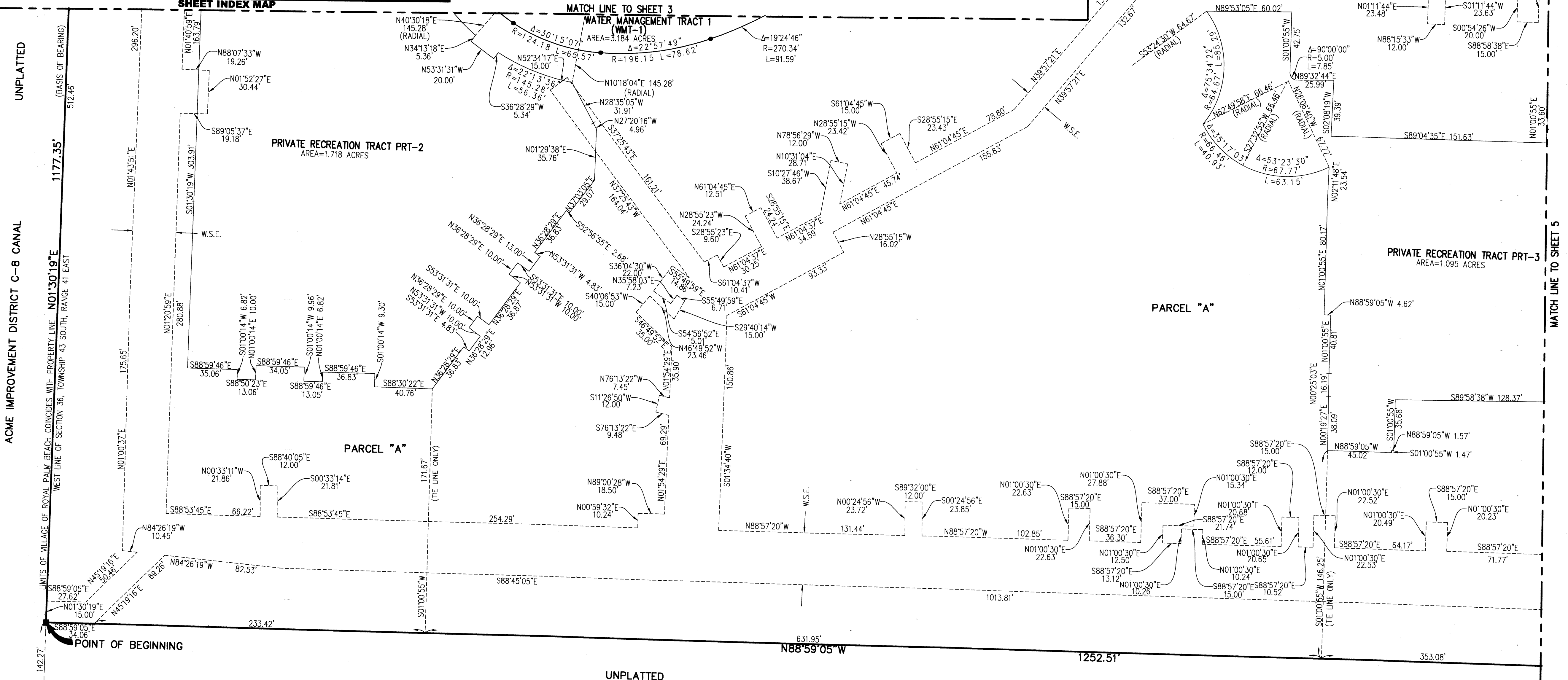
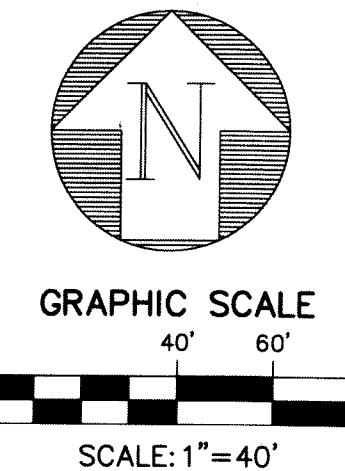
STATE OF FLORIDA }  
COUNTY OF PALM BEACH } S.S.  
THIS INSTRUMENT WAS FILED FOR  
RECORD AT \_\_\_\_\_  
THIS \_\_\_\_ DAY OF \_\_\_\_\_  
2016 \_\_\_\_ AND DULY RECORDED  
IN PLAT BOOK NO. \_\_\_\_\_  
ON PAGE \_\_\_\_\_

SHARON R. BOCK,  
CLERK AND COMPTROLLER  
BY: \_\_\_\_\_ D.C.

44



- LEGEND**
- ⊙ CENTERLINE
  - ⊕ LAKE WORTH DRAINAGE DISTRICT
  - ⊖ OFFICIAL RECORD BOOK
  - ⊗ SOUTH FLORIDA WATER MANAGEMENT DISTRICT
  - ⊘ PLAT BOOK
  - ⊙ PAGE(S)
  - ⊖ RIGHT-OF-WAY
  - ⊕ SET 4" X 4" CONCRETE MONUMENT WITH ALUMINUM DISK STAMPED P.R.M. LB#6603
  - ⊖ FOUND PERMANENT REFERENCE MONUMENT AS NOTED
  - ⊙ SET MAG NAIL AND DISK PCP LB#6603
  - ⊖ SET #5 IRON ROD AND CAP ENGENUITY LB#6603
  - ⊕ RADIUS
  - ⊖ ARC LENGTH
  - ⊕ DELTA ANGLE
  - ⊖ WATER AND SEWER EASEMENT
  - ⊙ PRIVATE RECREATION TRACT
  - ⊖ WATER MANAGEMENT TRACT
  - ⊕ DEED BOOK
  - ⊖ LICENSED BUSINESS
  - ⊙ PERMANENT REFERENCE MONUMENT
  - ⊖ PERMANENT CONTROL POINT



## RD ROYAL PALM BEACH, LLC SR 80 APARTMENT COMPLEX

A Higher Standard of Excellence

ENGINEERS • SURVEYORS • GIS MAPPERS

1280 NORTH CONGRESS AVE, SUITE 101  
WEST PALM BEACH, FLORIDA 33409  
PH (561)655-1151 • FAX (561)832-9390  
WWW.ENGENUITYGROUP.COM

DATE	12/14/2016
SCALE	1"=40'
CAD FILE	14124.02 PLAT
SDX PROJECT	14124.01 SHELBY HOME
DRAWN	STAFF
CHECKED	JM

S  
H  
E  
E  
T

**4/5**

JOB NO.  
**14124.02**

X:\Lend Projects\REV14124.01\_Shelby Home Site\dwg\14124\_02\_Plat March 2016.dwg 6/16/2016 10:42:17 AM EDT