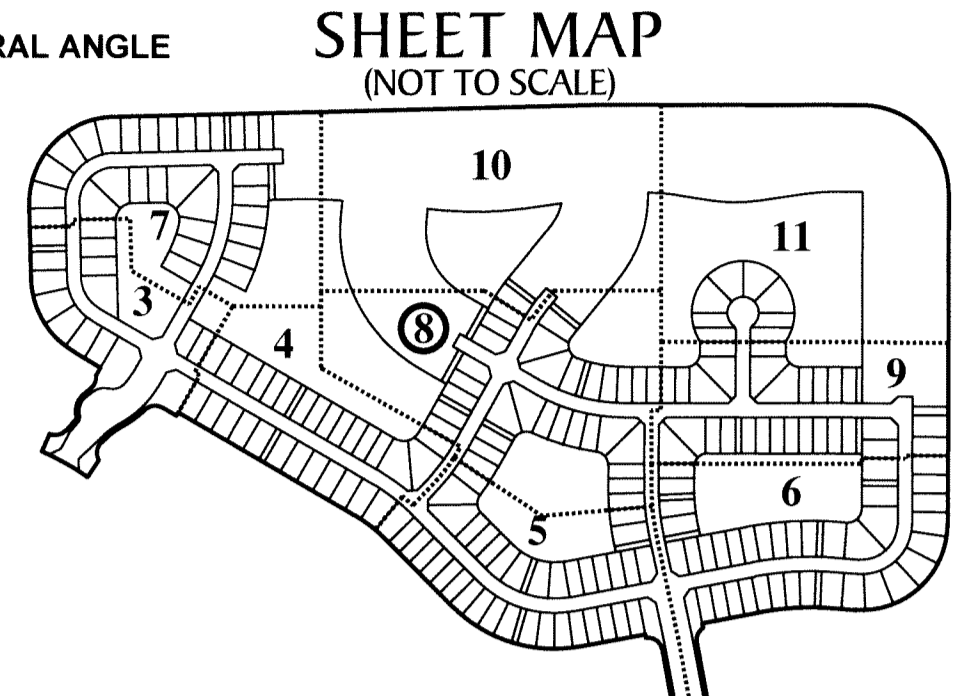


HAMMOCKS OF WESTLAKE

BEING A REPLAT OF TRACT "Q" OF TOWN CENTER PARKWAY NORTH PER PLAT BOOK 123, PAGE 106-118, BEING A PORTION OF SECTION 6, TOWNSHIP 43 SOUTH, RANGE 41 EAST, AND A PORTION OF SECTION 1, TOWNSHIP 43 SOUTH, RANGE 40 EAST, CITY OF WESTLAKE, PALM BEACH COUNTY, FLORIDA

- LEGEND:**
- Indicates (P.R.M.) Permanent Reference Monument - 4"x4" Concrete Monument LB7768, unless otherwise noted.
 - ⊕ Indicates (P.R.M.) Offset Permanent Reference Monument - 4"x4" Concrete Monument LB7768, unless otherwise noted.
 - Indicates (P.C.P.) Permanent Control Point LB7768
- MATCH LINE - SEE SHEET 7**
- MATCH LINE - SEE SHEET 4**

- P.B.C. --- Palm Beach County
- P.B. --- Plat Book
- FCM --- Found Concrete Monument
- O.R. --- Official Records Book
- (TYP) --- Typical
- (RB) --- Radial Bearing
- (NR) --- Non-Radial line
- (PR) --- Private Road
- NAD --- North American Datum
- LB --- Licensed Business
- 1/4 --- One Quarter
- R --- RADIUS
- L --- ARC LENGTH
- D --- DELTA-CENTRAL ANGLE
- (U.E.) --- Utility Easement
- (D.E.) --- Drainage Easement
- C --- Curve
- L --- Line
- B.T. --- Buffer Tract
- O.S.T. --- Open Space Tract
- W.M.T. --- Water Management Tract
- L.M.E. --- Lake Maintenance Easement
- L.M.A.E. --- Lake Maintenance Access Easement
- L.A.E. --- Limited Access Easement
- PG. --- Page
- R.T. --- Recreation Tract
- S.I.D. --- Seminole Improvement District
- P.S.M. --- Professional Surveyor and Mapper



CURVE DATA TABLE

NO.	RADIUS	DELTA	ARC	CHORD	BEARING
C14	600.00'	014°30'28"	151.93'	151.52'	N 36°30'16" E
C15	600.00'	010°10'27"	106.54'	106.40'	S 34°20'16" W
C16	600.00'	029°48'55"	312.22'	308.71'	S 74°54'26" E
C17	795.00'	012°16'04"	170.22'	169.89'	S 05°56'55" E
C29	575.00'	029°48'55"	299.22'	295.85'	S 74°54'25" E
C30	575.00'	010°10'27"	102.10'	101.98'	S 34°20'16" W
C31	625.00'	010°10'27"	110.98'	110.84'	S 34°20'16" W
C42	820.00'	012°16'04"	175.57'	175.24'	N 05°56'55" W
C43	625.00'	029°48'55"	325.23'	321.58'	S 74°54'25" E
C44	625.00'	014°30'28"	158.26'	157.83'	N 36°30'16" E
C114	575.00'	002°26'07"	24.44'	24.44'	S 88°35'50" E
C115	575.00'	006°09'24"	61.79'	61.76'	S 84°18'04" E
C116	575.00'	007°23'17"	74.14'	74.09'	S 77°31'44" E
C117	575.00'	007°23'16"	74.14'	74.09'	S 70°08'27" E
C118	575.00'	006°26'52"	64.71'	64.67'	S 63°13'24" E
C119	625.00'	004°32'15"	49.50'	49.48'	S 62°16'05" E
C120	625.00'	004°30'35"	49.19'	49.18'	S 66°47'30" E
C121	625.00'	004°30'35"	49.19'	49.18'	S 71°18'06" E
C122	625.00'	004°30'35"	49.19'	49.18'	S 75°48'41" E
C123	625.00'	004°30'35"	49.19'	49.18'	S 80°19'17" E
C124	625.00'	007°14'19"	78.96'	78.91'	S 86°11'44" E
C125	575.00'	003°18'23"	33.18'	33.18'	S 30°54'13" W
C126	575.00'	006°52'04"	68.92'	68.88'	S 35°59'27" W
C129	625.00'	002°55'42"	31.94'	31.94'	S 30°42'53" W
C134	625.00'	004°08'47"	45.23'	45.22'	N 31°19'25" E
C163	450.00'	002°26'07"	19.13'	19.12'	S 88°35'50" E
C164	450.00'	006°09'24"	48.35'	48.33'	S 84°18'04" E
C165	450.00'	007°23'16"	58.02'	57.98'	S 77°31'44" E
C166	450.00'	004°53'14"	38.38'	38.37'	S 71°23'29" E
C167	48.00'	023°55'55"	20.05'	19.90'	S 56°58'54" E
C168	47.98'	025°23'18"	21.26'	21.09'	S 22°30'53" W
C169	450.00'	004°13'23"	33.17'	33.16'	S 37°18'48" W
C174	750.00'	010°10'26"	133.18'	133.00'	S 34°20'16" W
C175	750.00'	002°55'42"	38.33'	38.33'	S 30°42'53" W
C178	250.00'	065°27'55"	285.65'	270.36'	S 27°16'01" E
C181	550.00'	065°27'55"	628.42'	594.79'	S 27°16'01" E
C208	750.00'	017°53'06"	234.11'	233.16'	S 73°39'19" E
C209	48.00'	002°45'08"	2.31'	2.31'	N 66°05'20" W
C210	750.00'	004°20'02"	56.73'	56.72'	S 66°52'47" E
C211	750.00'	004°30'35"	59.03'	59.02'	S 71°18'06" E
C212	750.00'	004°30'35"	59.03'	59.02'	S 75°48'41" E
C213	750.00'	004°30'35"	59.03'	59.02'	S 80°19'17" E
C214	48.00'	041°26'11"	34.71'	33.96'	N 61°52'47" W
C215	750.00'	008°32'41"	111.85'	111.74'	N 33°31'22" E
C216	945.00'	012°16'04"	202.34'	201.95'	S 05°56'55" E

CURVE DATA TABLE

NO.	RADIUS	DELTA	ARC	CHORD	BEARING
C219	750.00'	004°08'47"	54.28'	54.26'	N 31°19'25" E
C222	945.00'	003°27'03"	56.92'	56.91'	S 03°03'35" E
C223	945.00'	001°31'10"	25.06'	25.06'	S 00°34'28" E
C226	820.00'	003°27'03"	49.39'	49.38'	S 03°03'35" E
C227	820.00'	001°31'10"	21.75'	21.75'	S 00°34'28" E
C242	450.00'	020°52'01"	163.89'	162.99'	S 79°22'52" E
C243	48.00'	104°08'58"	87.25'	75.73'	S 16°52'23" E
C262	762.00'	008°32'41"	113.64'	113.53'	S 33°31'22" W
C263	36.00'	086°02'12"	54.06'	49.12'	S 72°16'08" W
C264	762.00'	017°45'31"	236.18'	235.23'	N 73°35'32" W
C265	38.00'	082°39'24"	54.82'	50.19'	N 41°08'35" W
C274	562.00'	064°24'34"	631.78'	599.03'	N 27°47'41" W
C275	48.00'	089°15'00"	74.77'	67.44'	N 15°22'28" W
C283	36.00'	087°44'03"	55.12'	49.90'	N 76°08'01" E

CURVE DATA TABLE

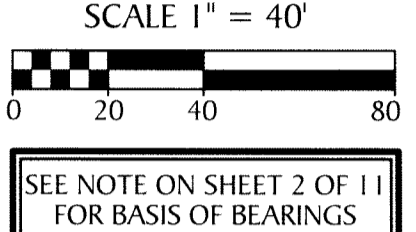
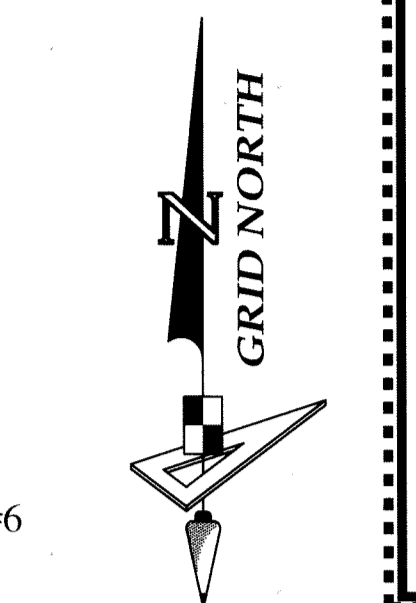
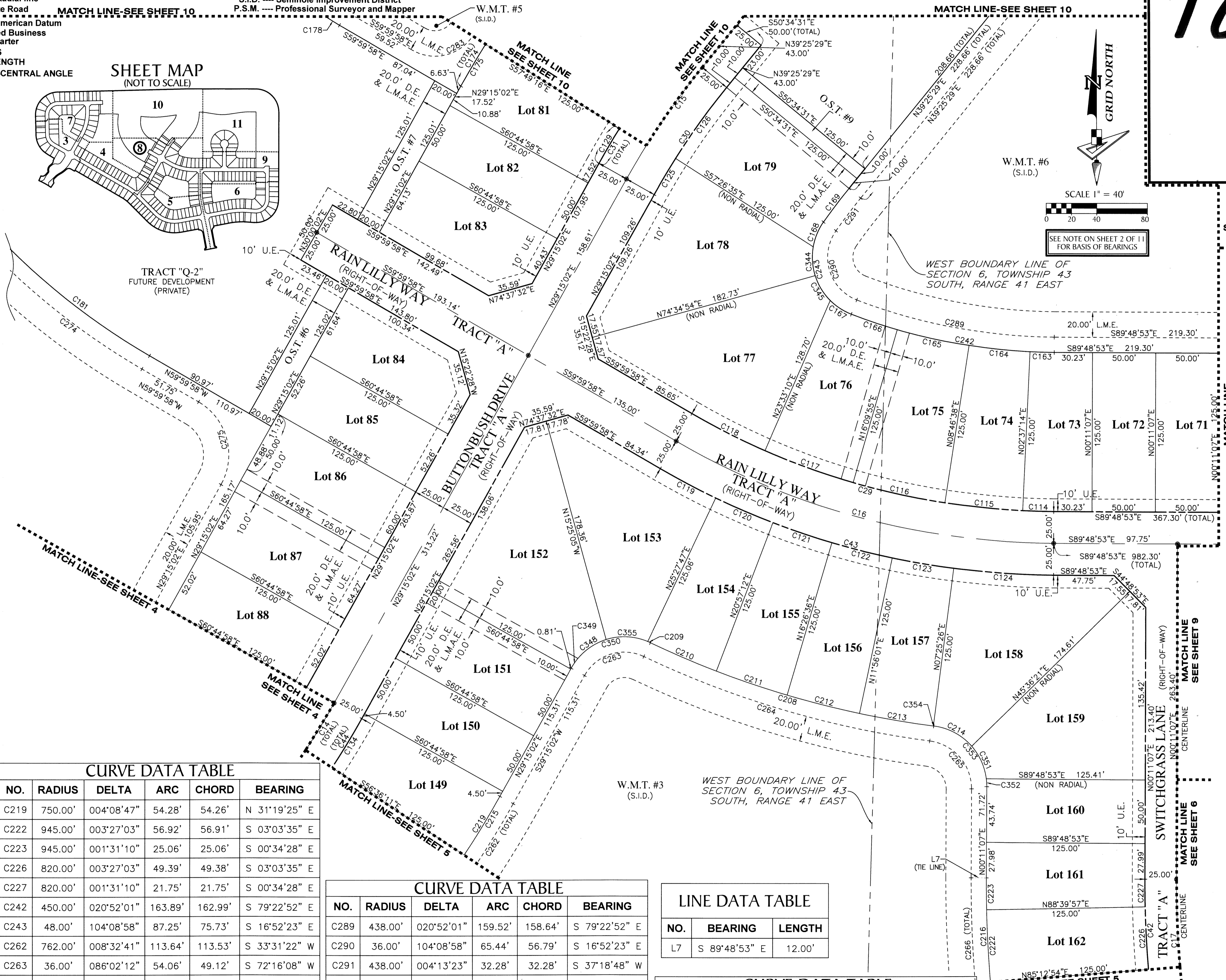
NO.	RADIUS	DELTA	ARC	CHORD	BEARING
C289	438.00'	020°52'01"	159.52'	158.64'	S 79°22'52" E
C290	36.00'	104°08'58"	65.44'	56.79'	S 16°52'23" E
C291	438.00'	004°13'23"	32.28'	32.28'	S 37°18'48" W
C344	48.00'	027°19'52"	22.90'	22.68'	S 03°50'33" E
C345	48.00'	027°30'28"	23.04'	22.82'	S 31°15'43" E
C348	48.00'	032°15'12"	27.02'	26.67'	S 56°24'45" W
C349	48.00'	011°02'07"	9.25'	9.23'	S 34°46'06" W
C350	48.00'	086°02'12"	72.08'	65.49'	S 72°16'08" W
C351	48.00'	033°51'03"	28.36'	27.95'	N 24°14'10" W

LINE DATA TABLE

NO.	BEARING	LENGTH
L7	S 89°48'53" E	12.00'

CURVE DATA TABLE

NO.	RADIUS	DELTA	ARC	CHORD	BEARING
C352	48.00'	007°29'45"	6.28'	6.28'	N 03°33'45" W
C353	48.00'	082°46'59"	69.35'	63.48'	N 41°12'23" W
C354	22.44'	000°43'14"	0.28'	0.28'	N 82°45'58" W
C355	48.00'	039°59'42"	33.51'	32.83'	N 87°27'45" W



SEE NOTE ON SHEET 2 OF 11 FOR BASIS OF BEARINGS