

THIS INSTRUMENT PREPARED BY
DAVID P. LINDLEY
OF
CAULFIELD and WHEELER, INC.
SURVEYORS - ENGINEERS - PLANNERS
7900 GLADES ROAD, SUITE 100
BOCA RATON, FLORIDA 33434
OFFICE (561)392-1991 FAX (561)750-1452
CERTIFICATE OF AUTHORIZATION NO. LB 3591
JULY - 2017

CRESTWOOD NORTH

BEING REPLAT OF A PORTION OF TRACT B, PLAT OF SECTION 15, NORTHEAST QUARTER ACCORDING TO THE PLAT THEREOF, AS RECORDED IN PLAT BOOK 107, PAGES 173 AND 174 AND ALL OF TRACTS C AND D, PLAT OF SARATOGA AT ROYAL PALM PLAT I, ACCORDING TO THE PLAT THEREOF AS RECORDED IN PLAT BOOK 61, PAGES 66 THROUGH 74, ALL OF THE PUBLIC RECORDS OF PALM BEACH COUNTY, FLORIDA, LYING IN SECTION 15, TOWNSHIP 43 SOUTH, RANGE 41 EAST, VILLAGE OF ROYAL PALM BEACH, PALM BEACH COUNTY, FLORIDA

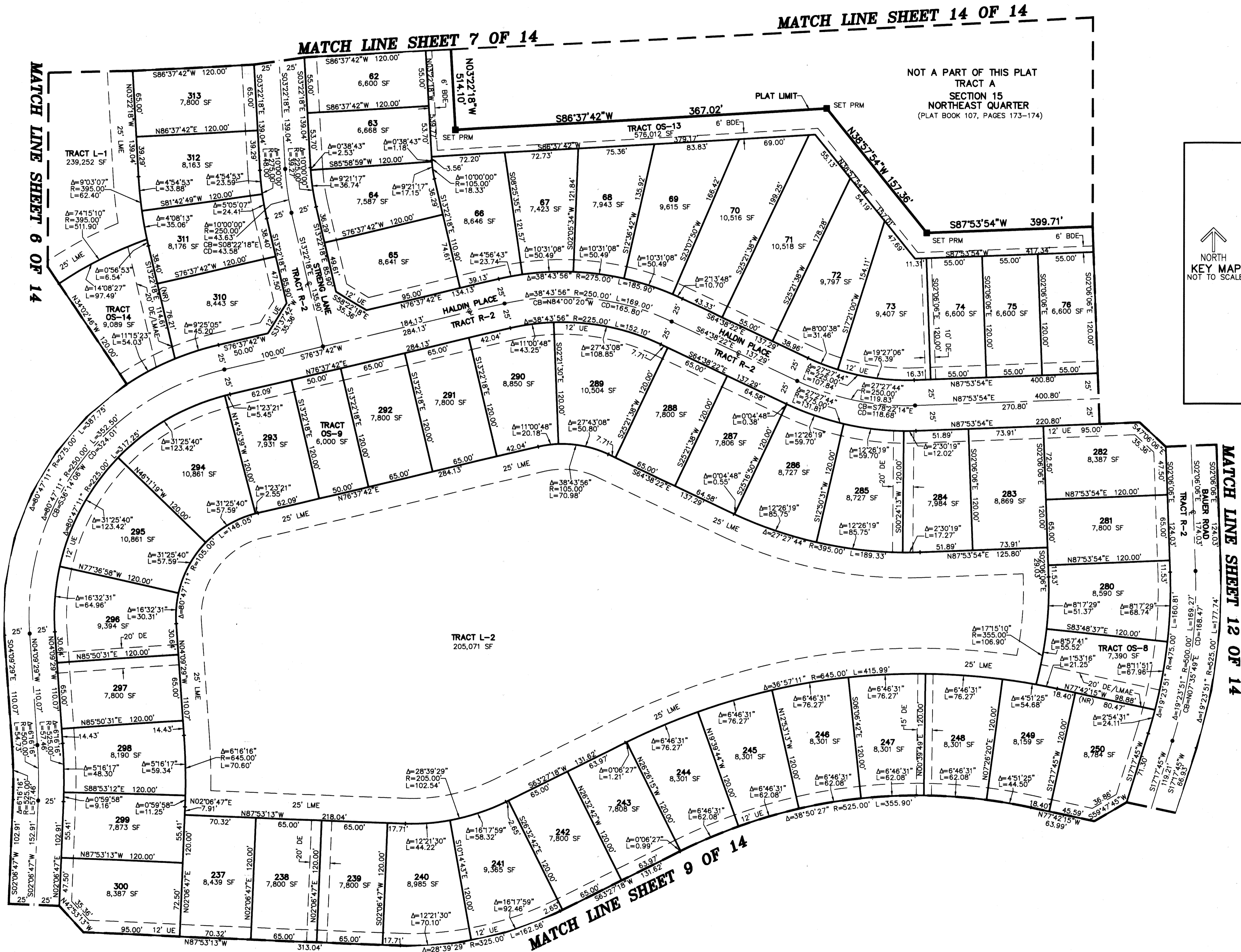
95

STATE OF FLORIDA
COUNTY OF PALM BEACH
THIS PLAT WAS FILED FOR
RECORD AT _____ M.
THIS _____ DAY OF _____
A.D. 201____ AND DULY RECORDED
IN PLAT BOOK _____ ON
PAGES _____ AND _____

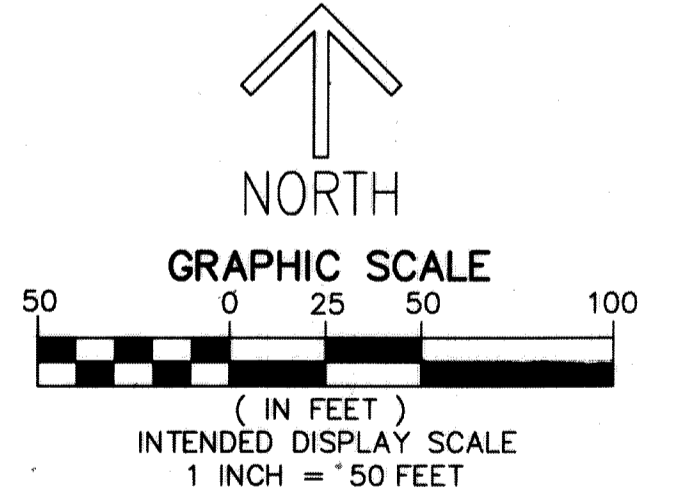
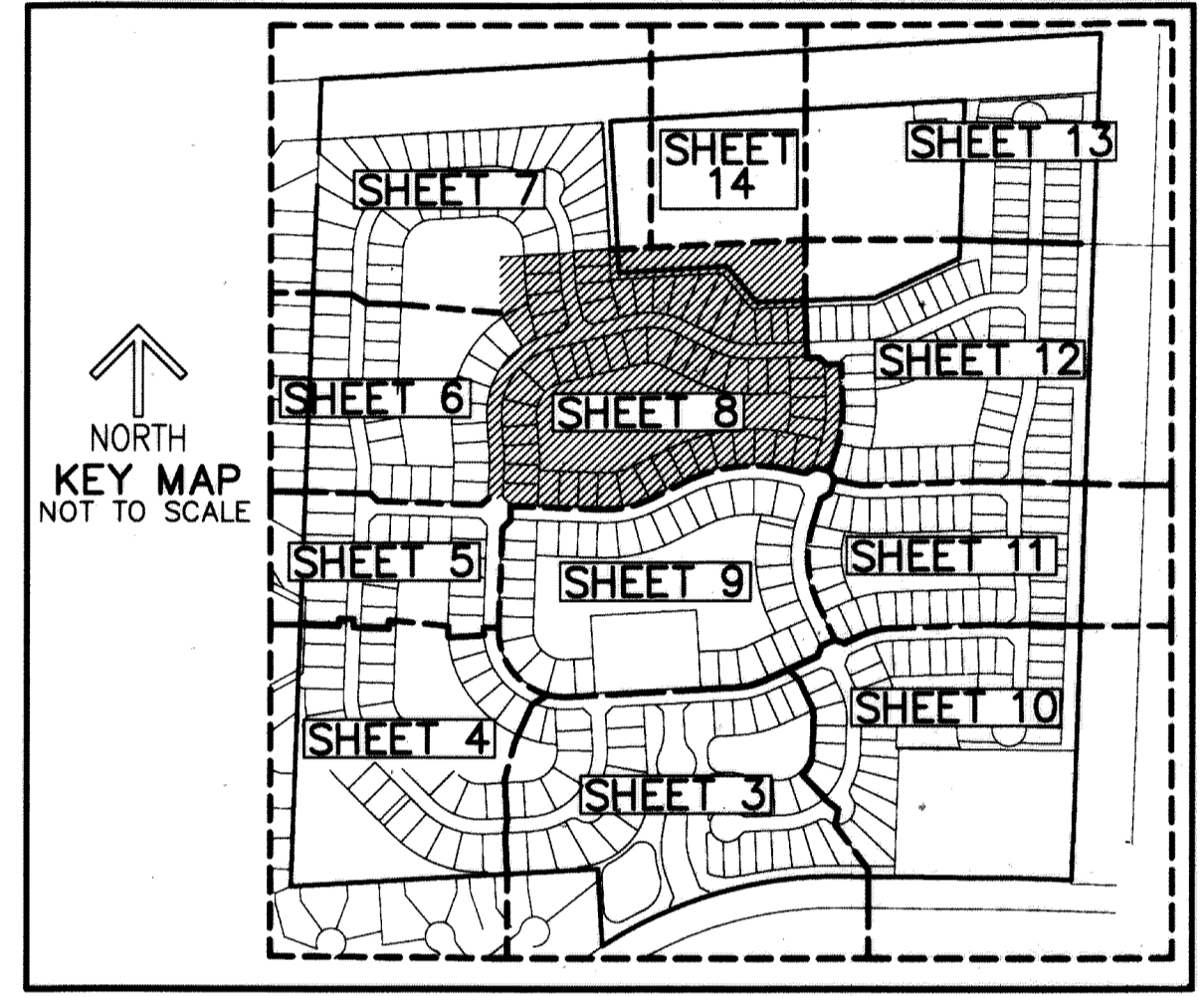
SHARON R. BOCK
CLERK AND COMPTROLLER

BY: _____
DEPUTY CLERK

SHEET 8 OF 14



NOT A PART OF THIS PLAT
TRACT A
SECTION 15
NORTHEAST QUARTER
(PLAT BOOK 107, PAGES 173-174)



- LEGEND/ABBREVIATIONS**
- ⊕ - CENTERLINE
 - Δ - DELTA (CENTRAL ANGLE)
 - BDE - BUFFER DRAINAGE EASEMENT
 - CB - CHORD BEARING
 - CD - CHORD DISTANCE
 - DE - DRAINAGE EASEMENT
 - FPL - FLORIDA POWER & LIGHT CO.
 - L - ARC LENGTH
 - LAE - LIMITED ACCESS EASEMENT
 - LB - LICENSED BUSINESS
 - LMAE - LAKE MAINTENANCE ACCESS EASEMENT
 - LME - LAKE MAINTENANCE EASEMENT
 - LSE - LIFT STATION EASEMENT
 - LBE - LANDSCAPE BUFFER EASEMENT
 - OHME - OVERHANG MAINTENANCE EASEMENT
 - O.R.B. - OFFICIAL RECORD BOOK
 - R - RADIUS
 - SF - SQUARE FEET
 - UE - UTILITY EASEMENT
 - PRM - DENOTES PERMANENT REFERENCE MONUMENT 4" x 4" x 24" CONCRETE MONUMENT WITH ALUMINUM DISK STAMPED "C&W PRM LB3591"
 - PCP - DENOTES PERMANENT CONTROL POINT
 - OHME - OVERHANG MAINTENANCE EASEMENT
 - INDICATES "ZERO" SIDE OF LOT LINE
 - PBCUE - PALM BEACH COUNTY UTILITY EASEMENT
 - (NR) - NON RADIAL LINE