

THIS INSTRUMENT PREPARED BY  
 DAVID P. LINDLEY  
 OF  
**CAULFIELD and WHEELER, INC.**  
 SURVEYORS - ENGINEERS - PLANNERS  
 7900 GLADES ROAD, SUITE 100  
 BOCA RATON, FLORIDA 33434  
 OFFICE (561)392-1991 FAX (561)750-1452  
 CERTIFICATE OF AUTHORIZATION NO. LB 3591  
 JULY - 2017

# CRESTWOOD NORTH

BEING REPLAT OF A PORTION OF TRACT B, PLAT OF SECTION 15, NORTHEAST QUARTER ACCORDING TO THE PLAT THEREOF, AS RECORDED IN PLAT BOOK 107, PAGES 173 AND 174 AND ALL OF TRACTS C AND D, PLAT OF SARATOGA AT ROYAL PALM PLAT I, ACCORDING TO THE PLAT THEREOF AS RECORDED IN PLAT BOOK 61, PAGES 66 THROUGH 74, ALL OF THE PUBLIC RECORDS OF PALM BEACH COUNTY, FLORIDA, LYING IN SECTION 15, TOWNSHIP 43 SOUTH, RANGE 41 EAST, VILLAGE OF ROYAL PALM BEACH, PALM BEACH COUNTY, FLORIDA

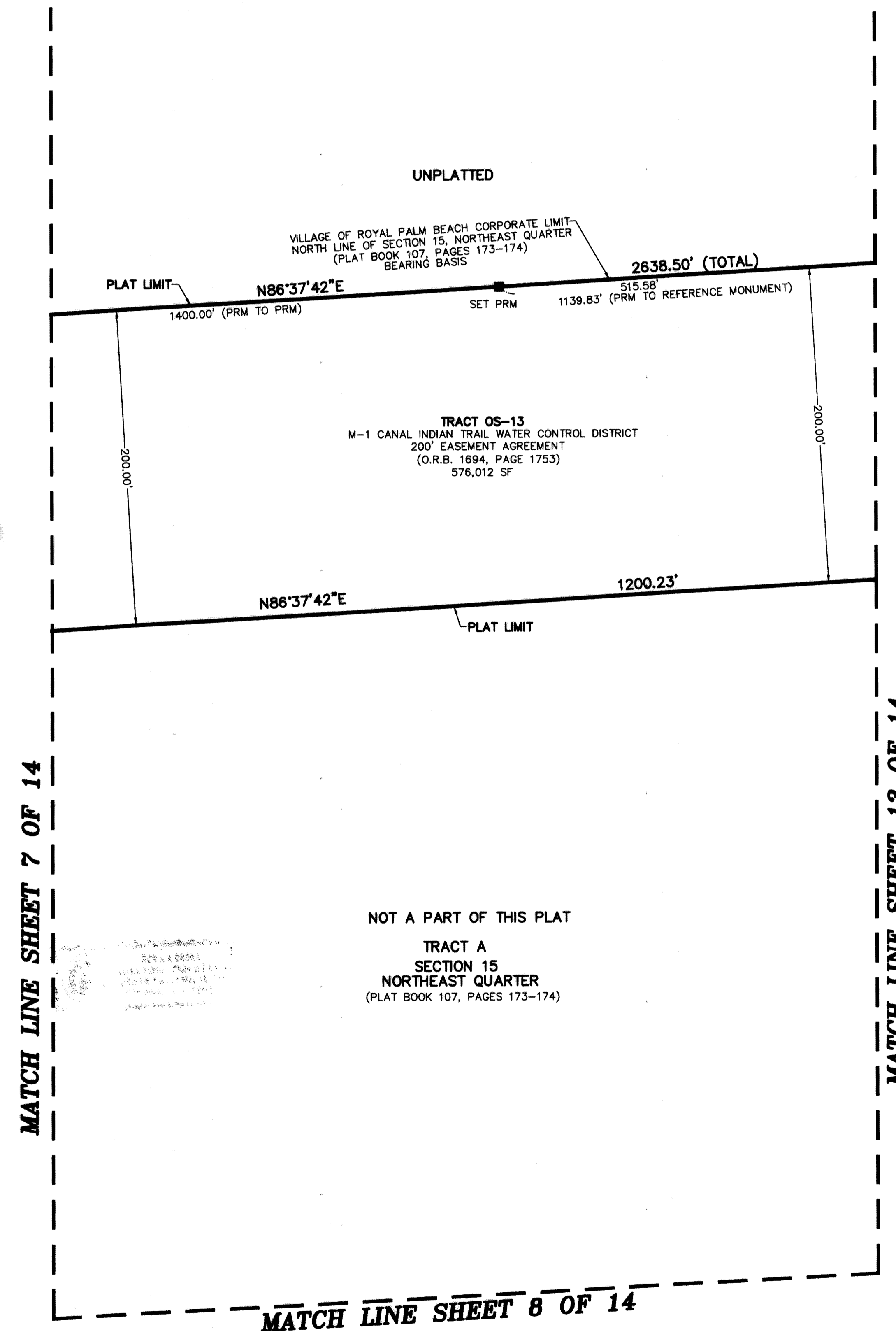
# 101

STATE OF FLORIDA  
 COUNTY OF PALM BEACH  
 THIS PLAT WAS FILED FOR  
 RECORD AT \_\_\_\_\_ M.  
 THIS \_\_\_\_\_ DAY OF \_\_\_\_\_  
 A.D. 201\_\_\_\_ AND DULY RECORDED  
 IN PLAT BOOK \_\_\_\_\_ ON  
 PAGES \_\_\_\_\_ AND \_\_\_\_\_

SHARON R. BOCK  
 CLERK AND COMPTROLLER

BY: \_\_\_\_\_  
 DEPUTY CLERK

**SHEET 14 OF 14**

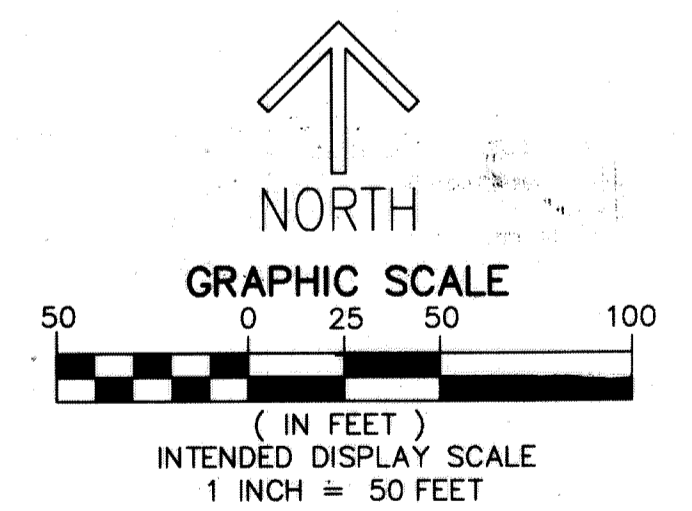
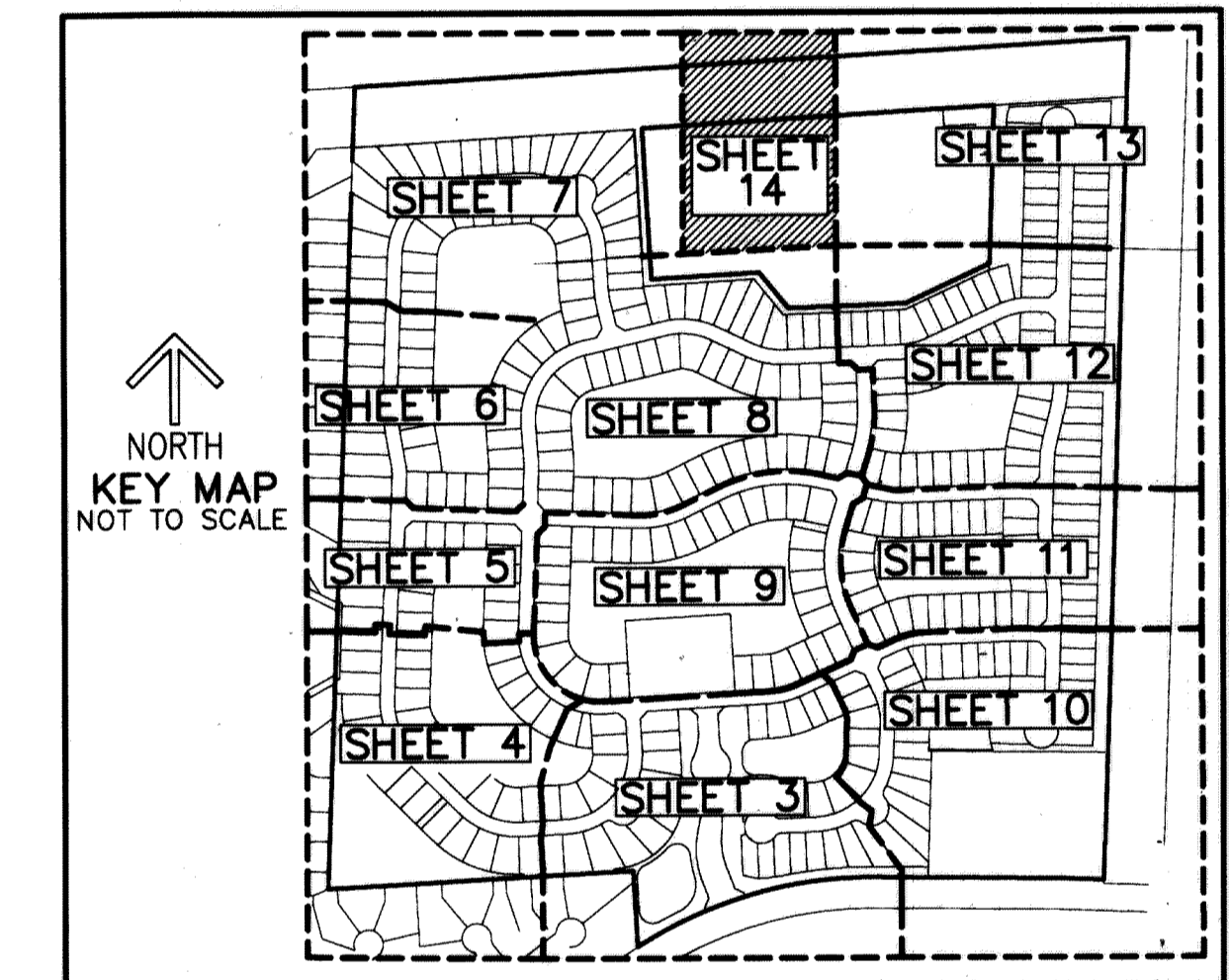


MATCH LINE SHEET 7 OF 14

MATCH LINE SHEET 13 OF 14

NOT A PART OF THIS PLAT  
 TRACT A  
 SECTION 15  
 NORTHEAST QUARTER  
 (PLAT BOOK 107, PAGES 173-174)

MATCH LINE SHEET 8 OF 14



- LEGEND/ABBREVIATIONS**
- ⊕ - CENTERLINE
  - Δ - DELTA (CENTRAL ANGLE)
  - BDE - BUFFER DRAINAGE EASEMENT
  - CB - CHORD BEARING
  - CD - CHORD DISTANCE
  - DE - DRAINAGE EASEMENT
  - FPL - FLORIDA POWER & LIGHT CO.
  - L - ARC LENGTH
  - LAE - LIMITED ACCESS EASEMENT
  - LB - LICENSED BUSINESS
  - LMAE - LAKE MAINTENANCE ACCESS EASEMENT
  - LME - LAKE MAINTENANCE EASEMENT
  - LSE - LIFT STATION EASEMENT
  - LBE - LANDSCAPE BUFFER EASEMENT
  - OHME - OVERHANG MAINTENANCE EASEMENT
  - O.R.B. - OFFICIAL RECORD BOOK
  - R - RADIUS
  - SF - SQUARE FEET
  - UE - UTILITY EASEMENT
  - PRM - DENOTES PERMANENT REFERENCE MONUMENT 4" x 4" x 24" CONCRETE MONUMENT WITH ALUMINUM DISK STAMPED "O&W PRM LB3591"
  - ⊙ PCP - DENOTES PERMANENT CONTROL POINT
  - OHME - OVERHANG/MAINTENANCE EASEMENT
  - ▶ - INDICATES "ZERO" SIDE OF LOT LINE
  - PBCUE - PALM BEACH COUNTY UTILITY EASEMENT
  - (NR) - NON RADIAL LINE