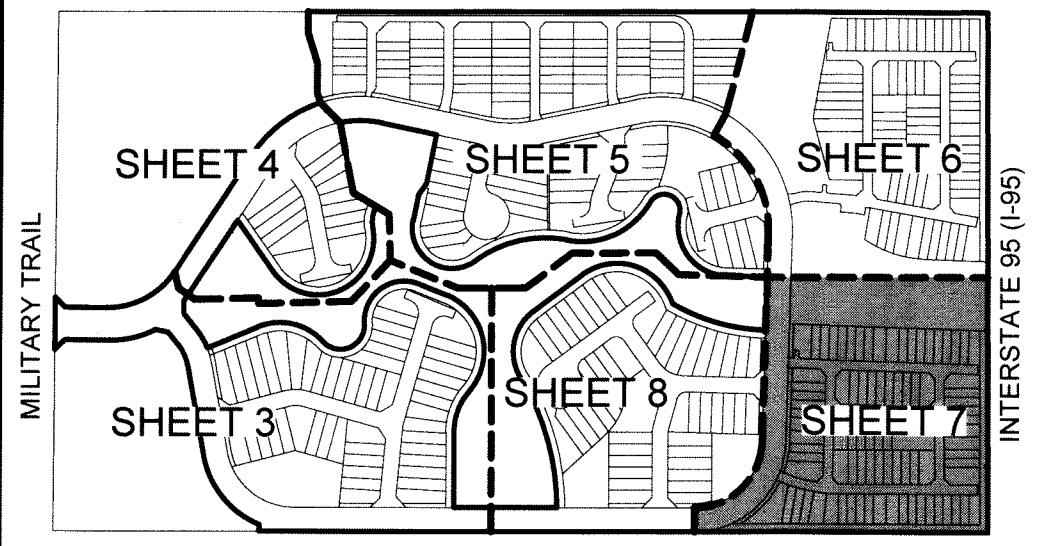


MEDITERRANEA PHASE 2

BEING A REPLAT OF A PORTION OF THE PLAT OF WOODS EDGE AS RECORDED IN PLAT BOOK 50, PAGES 130 AND 131, PUBLIC RECORDS OF PALM BEACH COUNTY, FLORIDA, LYING IN SECTION 25, TOWNSHIP 42 SOUTH, RANGE 42 EAST, CITY OF RIVIERA BEACH, PALM BEACH COUNTY, FLORIDA.

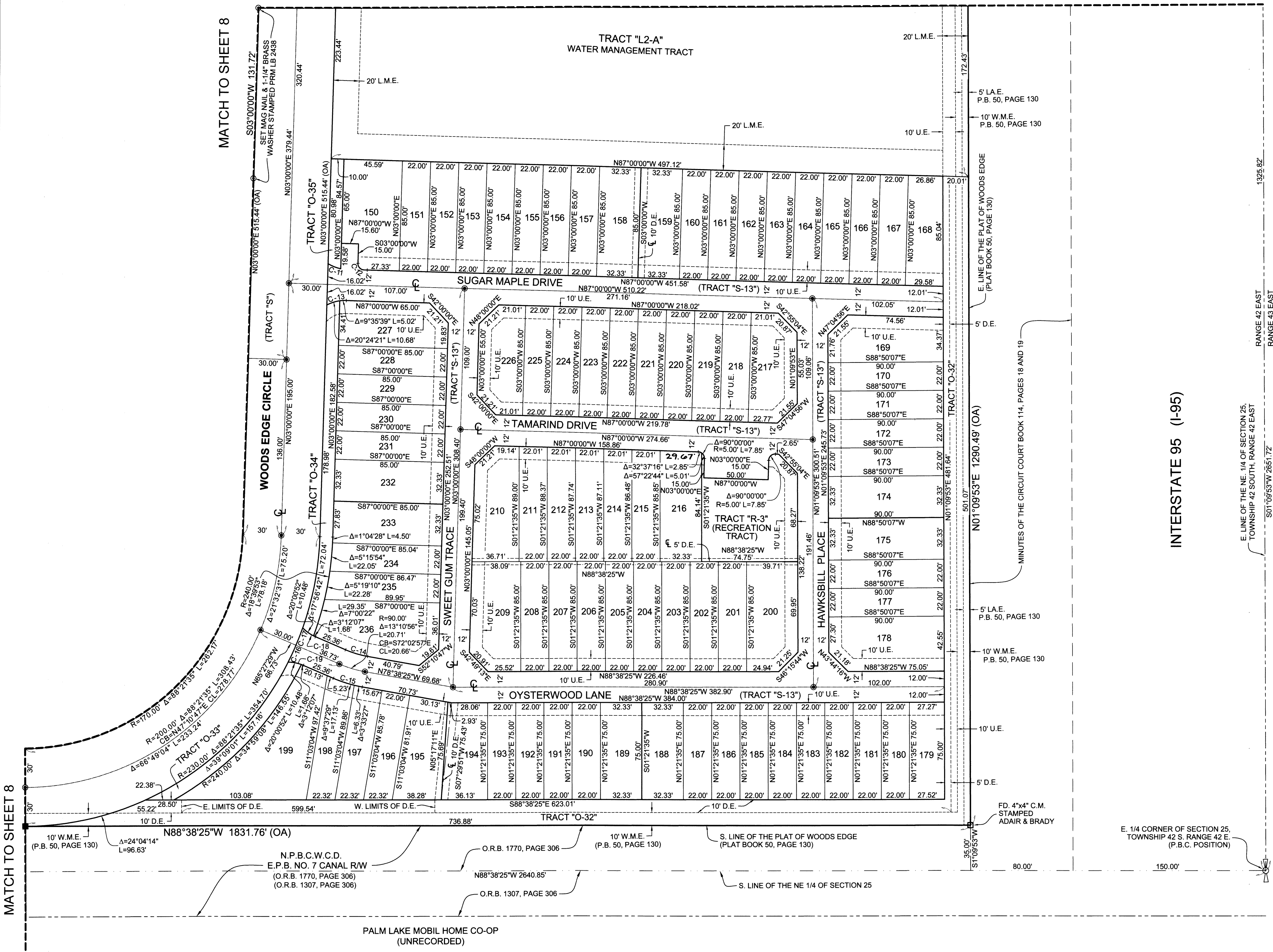
SHEET 7 OF 9

COUNTY OF PALM BEACH)
STATE OF FLORIDA) SS
THIS PLAT WAS FILED FOR RECORD AT)
M. THIS) DAY OF)
2017, AND DULY)
RECORDED IN PLAT BOOK NO.)
ON PAGE) THRU)
SHARON R. BOCK,
CLERK AND COMPTROLLER
BY: _____ D.C. *13*

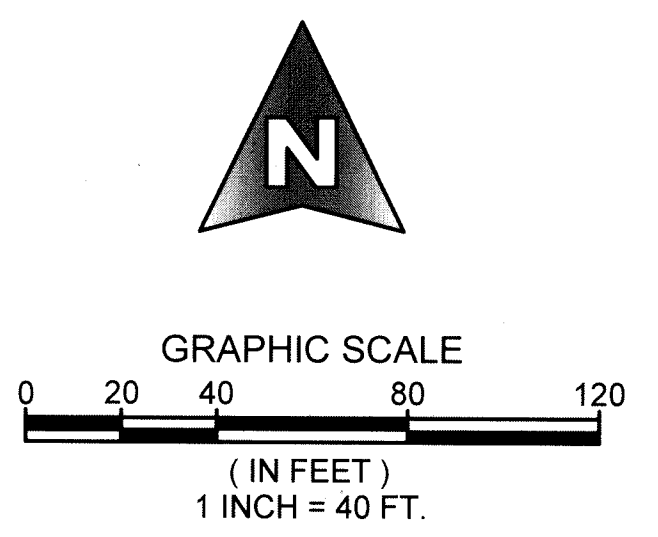


KEY MAP
NOT TO SCALE

MATCH TO SHEET 6



CURVE TABLE			
CURVE NO.	RADIUS	DELTA	ARC LENGTH
C-1	30.00'	29°30'56"	15.45'
C-2	42.00'	21°15'55"	15.59'
C-3	54.00'	15°23'10"	14.50'
C-4	330.00'	68°00'00"	391.65'
C-5	330.00'	68°00'00"	391.65'
C-7	30.00'	34°17'11"	17.95'
C-8	90.00'	11°16'40"	17.72'
C-9	5.00'	90°00'00"	7.85'
C-10	5.00'	90°00'00"	7.85'
C-11	30.00'	20°24'21"	10.68'
C-12	5.00'	90°00'00"	7.85'
C-13	30.00'	30°00'00"	15.71'
C-14	78.00'	13°10'56"	17.95'
C-15	102.00'	13°10'56"	23.47'
C-16	230.00'	3°35'49"	14.44'
C-17	230.00'	3°35'49"	14.44'
C-18	30.00'	23°13'00"	12.16'
C-19	30.00'	23°13'00"	12.16'



MATCH TO SHEET 8

INTERSTATE 95 (I-95)

E. LINE OF THE NE 1/4 OF SECTION 25, TOWNSHIP 42 SOUTH, RANGE 42 EAST

RANGE 42 EAST
RANGE 43 EAST

SHEET 7 OF 9



MICHAEL B. SCHORAH & ASSOCIATES, INC.
1850 FOREST HILL BLVD., SUITE 206
WEST PALM BEACH, FLORIDA 33406
EB32438 TEL. (561) 968-0080 FAX. (561) 642-9726 LB#2438

MEDITERRANEA PHASE 2