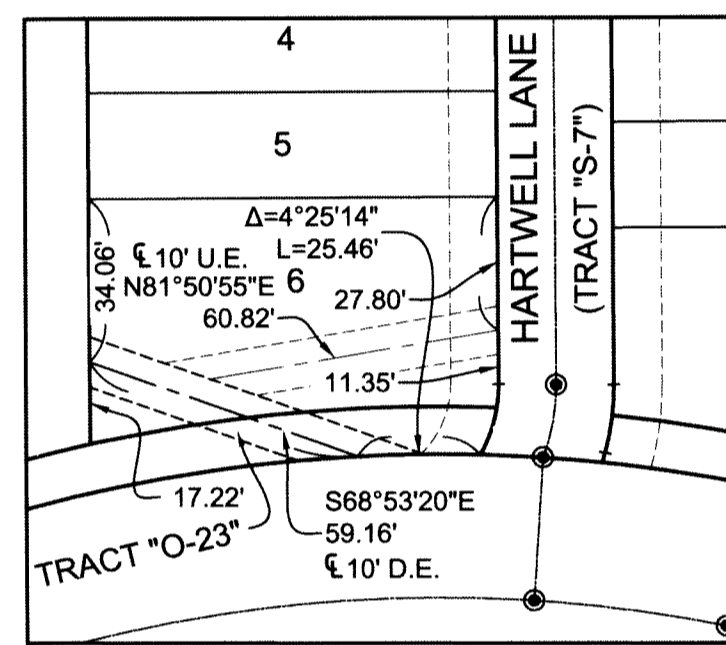


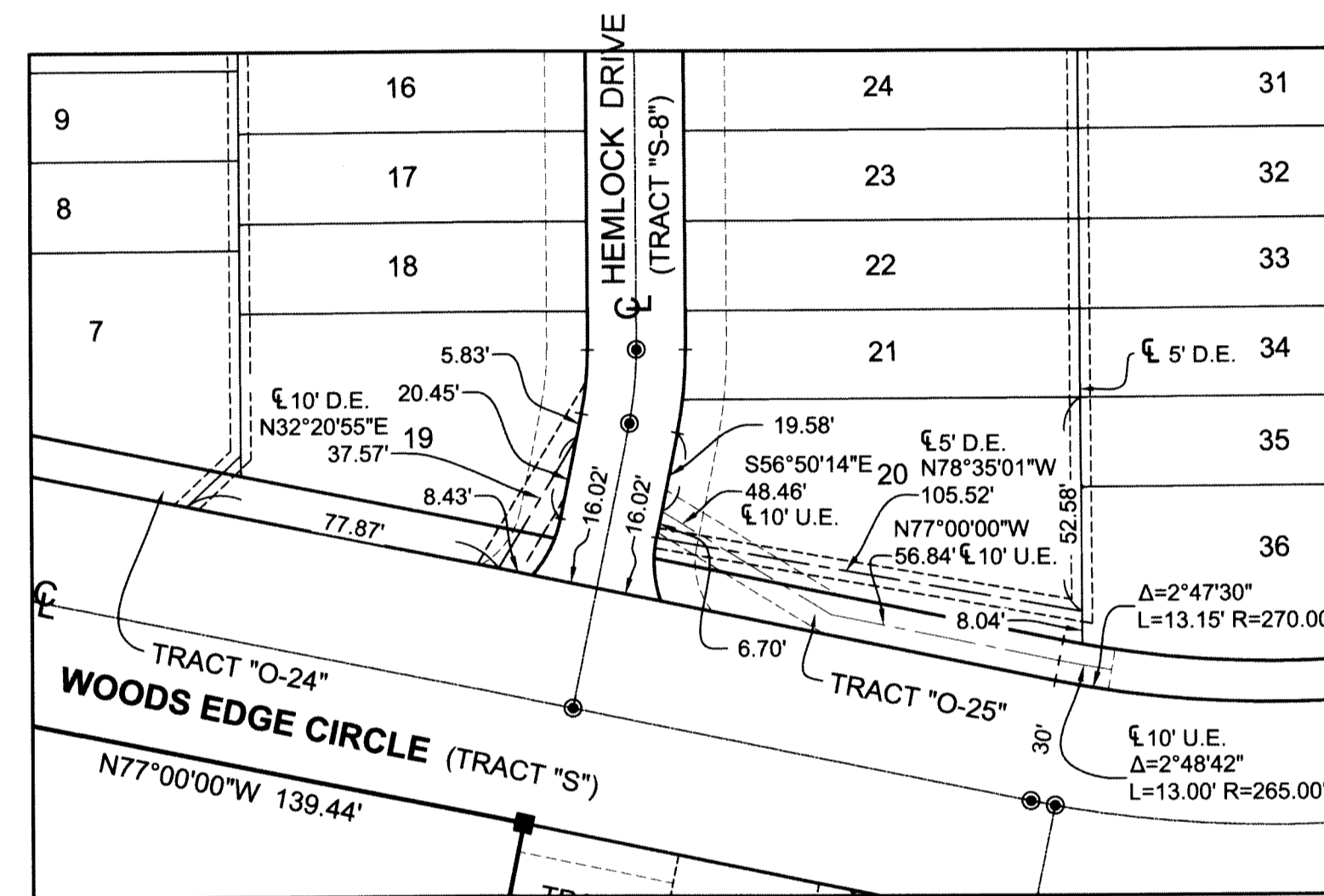
130

**MEDITERRANEA PHASE 2**  
 BEING A REPLAT OF A PORTION OF THE PLAT OF WOODS EDGE AS RECORDED IN  
 PLAT BOOK 50, PAGES 130 AND 131, PUBLIC RECORDS OF PALM BEACH COUNTY, FLORIDA,  
 LYING IN SECTION 25, TOWNSHIP 42 SOUTH, RANGE 42 EAST, CITY OF RIVIERA BEACH, PALM BEACH COUNTY, FLORIDA.  
 SHEET 9 OF 9

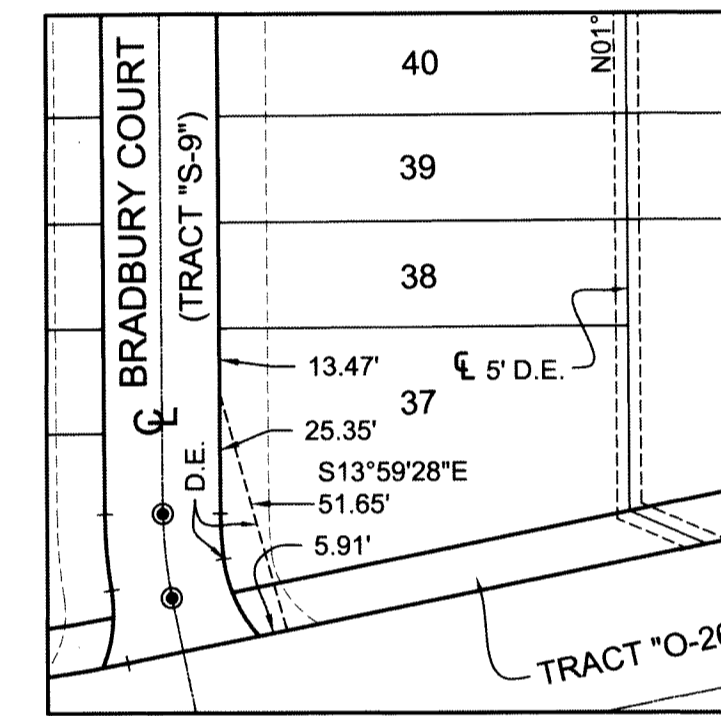
COUNTY OF PALM BEACH )  
 STATE OF FLORIDA ) SS  
 THIS PLAT WAS FILED FOR RECORD AT \_\_\_\_\_ M. THIS \_\_\_\_\_ DAY OF \_\_\_\_\_, 2017, AND DULY RECORDED IN PLAT BOOK NO. \_\_\_\_\_ ON PAGE \_\_\_\_\_ THRU \_\_\_\_\_  
 SHARON R. BOCK,  
 CLERK AND COMPTROLLER  
 BY: \_\_\_\_\_, D.C.



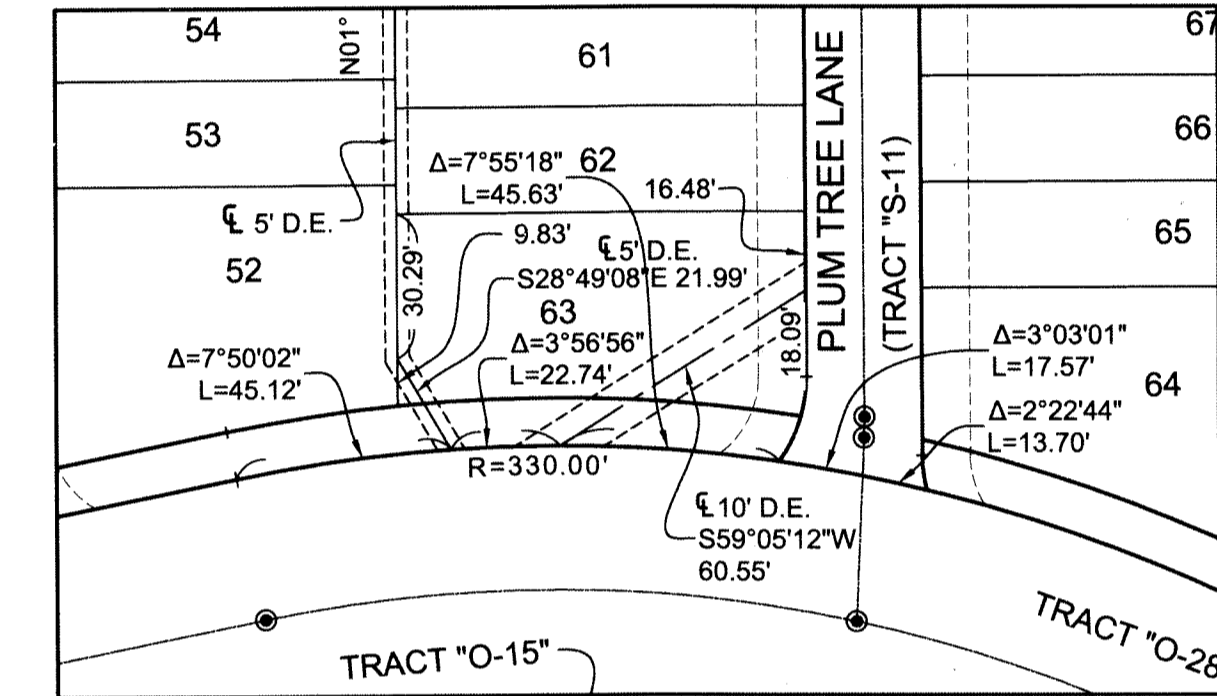
DETAIL "A"



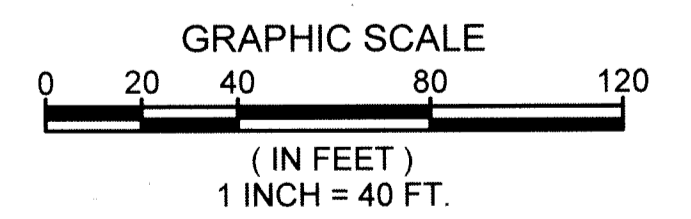
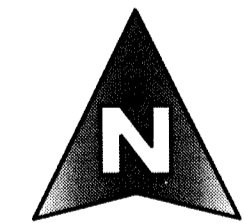
DETAIL "B"



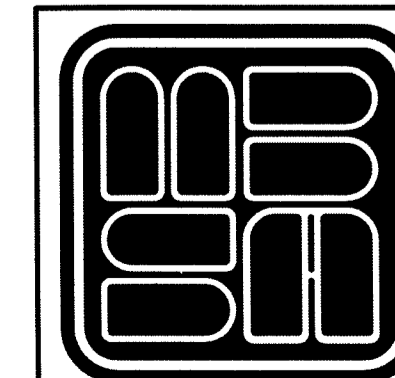
DETAIL "C"



DETAIL "D"



SHEET 9 OF 9



**MICHAEL B. SCHORAH & ASSOCIATES, INC.**  
 1850 FOREST HILL BLVD., SUITE 206  
 WEST PALM BEACH, FLORIDA 33406  
 EB32438 TEL. (561) 968-0080 FAX. (561) 642-9726 LB#2438

MEDITERRANEA PHASE 2