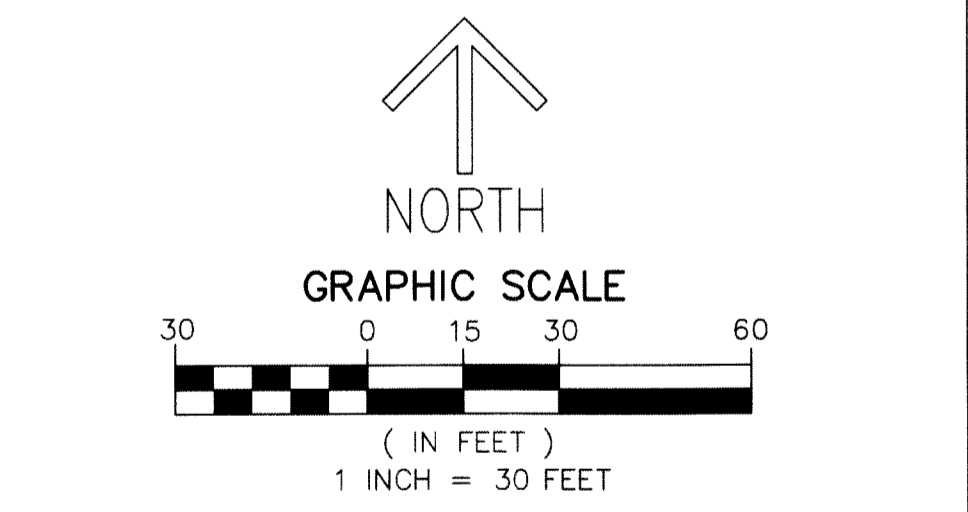
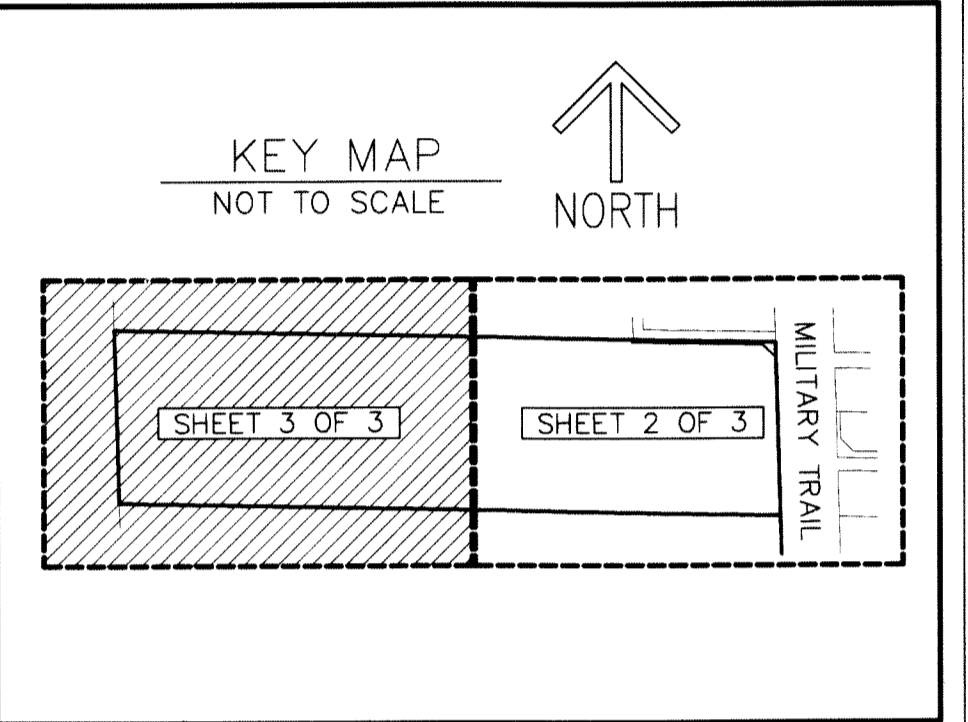


147

SHEET 3 OF 3



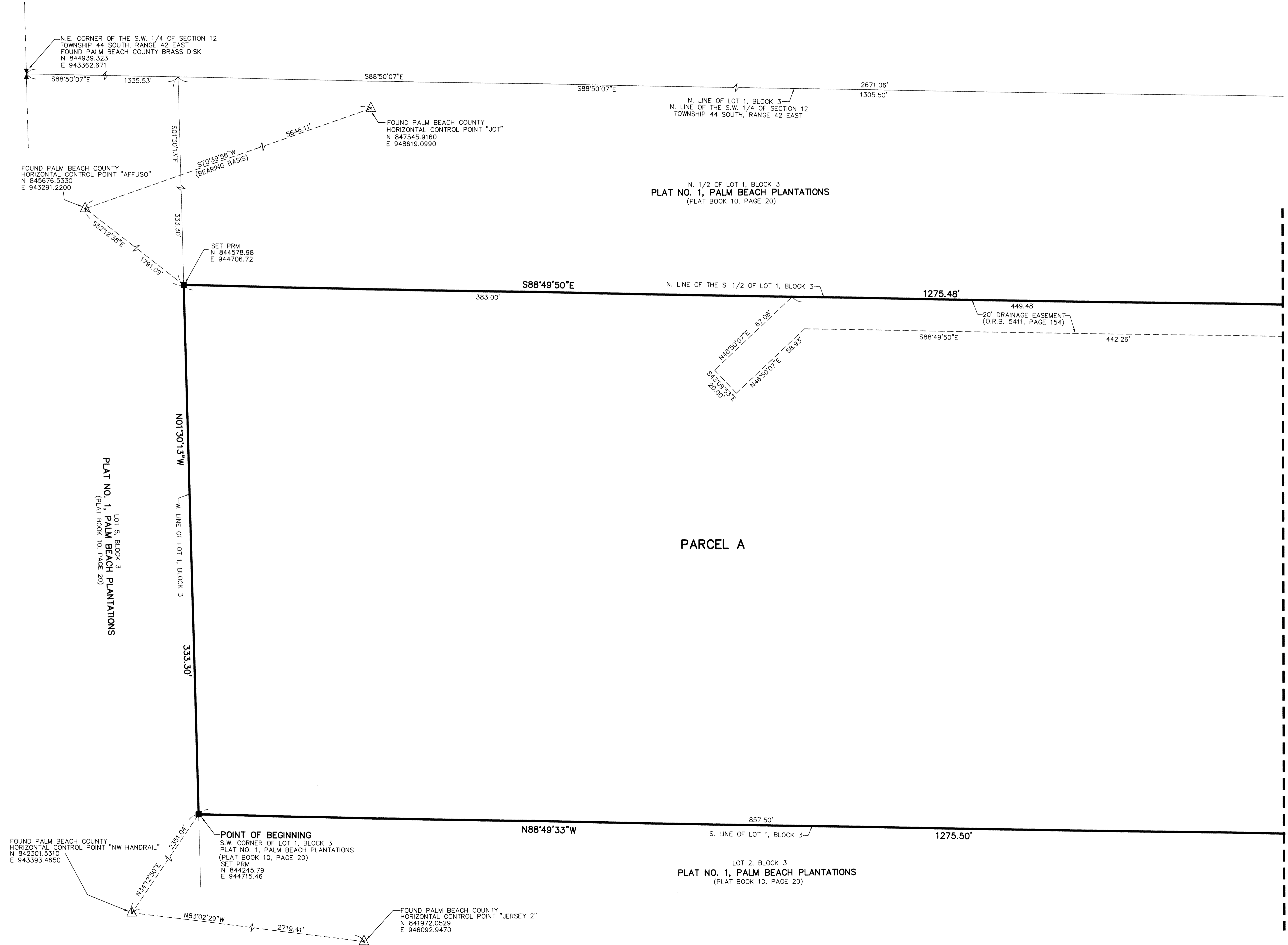
NOTES
COORDINATES, BEARINGS AND DISTANCES
COORDINATES SHOWN ARE GRID
DATUM = NAD 83 (90/98 ADJUSTMENT)
ZONE = FLORIDA EAST
LINEAR UNIT = US SURVEY FEET
COORDINATE SYSTEM 1983 STATE PLANE
TRANSVERSE MERCATOR PROJECTION
ALL DISTANCES ARE GROUND
SCALE FACTOR = 1.0000375
GROUND DISTANCE X SCALE FACTOR = GRID DISTANCE
BEARINGS AS SHOWN HEREON ARE GRID DATUM,
NAD 83 (90/98 ADJUSTMENT), FLORIDA EAST ZONE.

LEGEND/ABBREVIATIONS
C - CENTERLINE
E - EASTING
F.P.L. - FLORIDA POWER & LIGHT CO.
LAE - LIMITED ACCESS EASEMENT
LB - LICENSED BUSINESS
N - NORTHING
O.R.B. - OFFICIAL RECORD BOOK
UE - UTILITY EASEMENT
■ PRM - DENOTES PERMANENT REFERENCE MONUMENT
4" x 4" x 24" CONCRETE MONUMENT WITH
ALUMINUM DISK STAMPED "C&W PRM LB3591"
UNLESS OTHERWISE DESCRIBED
● PRM - DENOTES MONUMENT SET 5/8" IRON ROAD AND
CAP STAMPED "C&W LB3591"
▲ PRM - DENOTES PERMANENT REFERENCE MONUMENT
SET NAIL AND DISK STAMPED "PRM" LB 3591

THIS INSTRUMENT PREPARED BY
DAVID P. LINDLEY
OF
CAULFIELD and WHEELER, INC.
SURVEYORS - ENGINEERS - PLANNERS
7900 GLADES ROAD, SUITE 100
BOCA RATON, FLORIDA 33434 - (561)392-1991
CERTIFICATE OF AUTHORIZATION NO. LB3591

DON COOK MOTORS

BEING A REPLAT OF A PORTION OF THE SOUTH ONE-HALF OF LOT 1, BLOCK 3,
PLAT NO. 1, PALM BEACH PLANTATIONS,
AS RECORDED IN PLAT BOOK 10, PAGE 20 OF THE PUBLIC RECORDS OF PALM BEACH COUNTY, FLORIDA,
LYING IN SECTION 12, TOWNSHIP 44 SOUTH, RANGE 42 EAST, PALM BEACH COUNTY, FLORIDA



MATCH LINE SHEET 2 OF 3