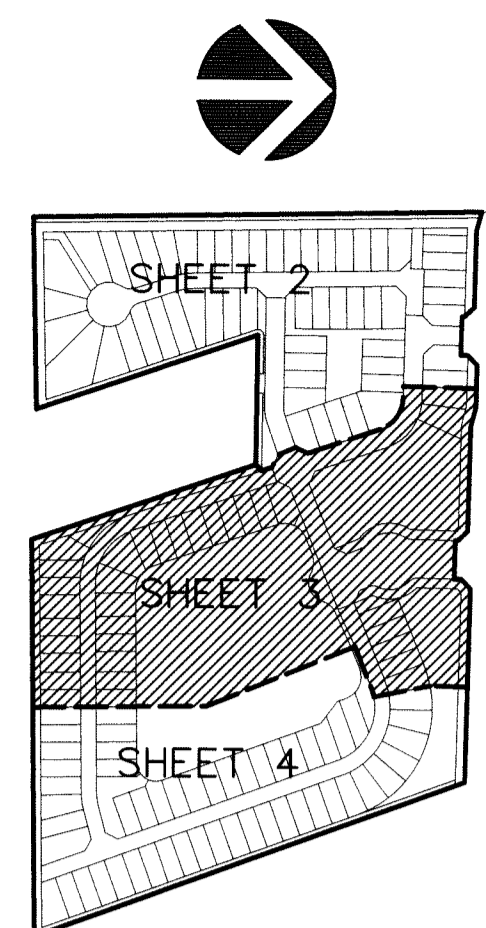




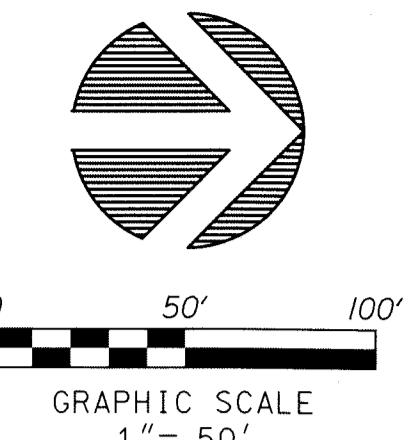
SURVEYING & MAPPING  
Certificate of Authorization No. LB7264  
Prepared by Jeff S. Hodapp, P.S.M.  
947 Clint Moore Road  
Boca Raton, Florida 33487  
Tel: (561) 241-9988  
Fax: (561) 241-5182



KEY MAP  
NOT TO SCALE

# LANTANA FARMS P.U.D.

A REPLAT OF PORTIONS OF LOT 1, TRACT 41 & LOT 4, TRACT 40  
"PALM BEACH FARMS COMPANY PLAT NO. 13" (P.B. 6, PGS. 98-99, P.B.C.R.),  
AND A REPLAT OF TRACT A, "LANTANA FARMS M.U.P.D.", (P.B. 112, PGS. 10&11, P.B.C.R.)  
HIATUS BETWEEN TOWNSHIP 44 & 45 SOUTH, RANGE 42 EAST, PALM BEACH COUNTY, FLORIDA.

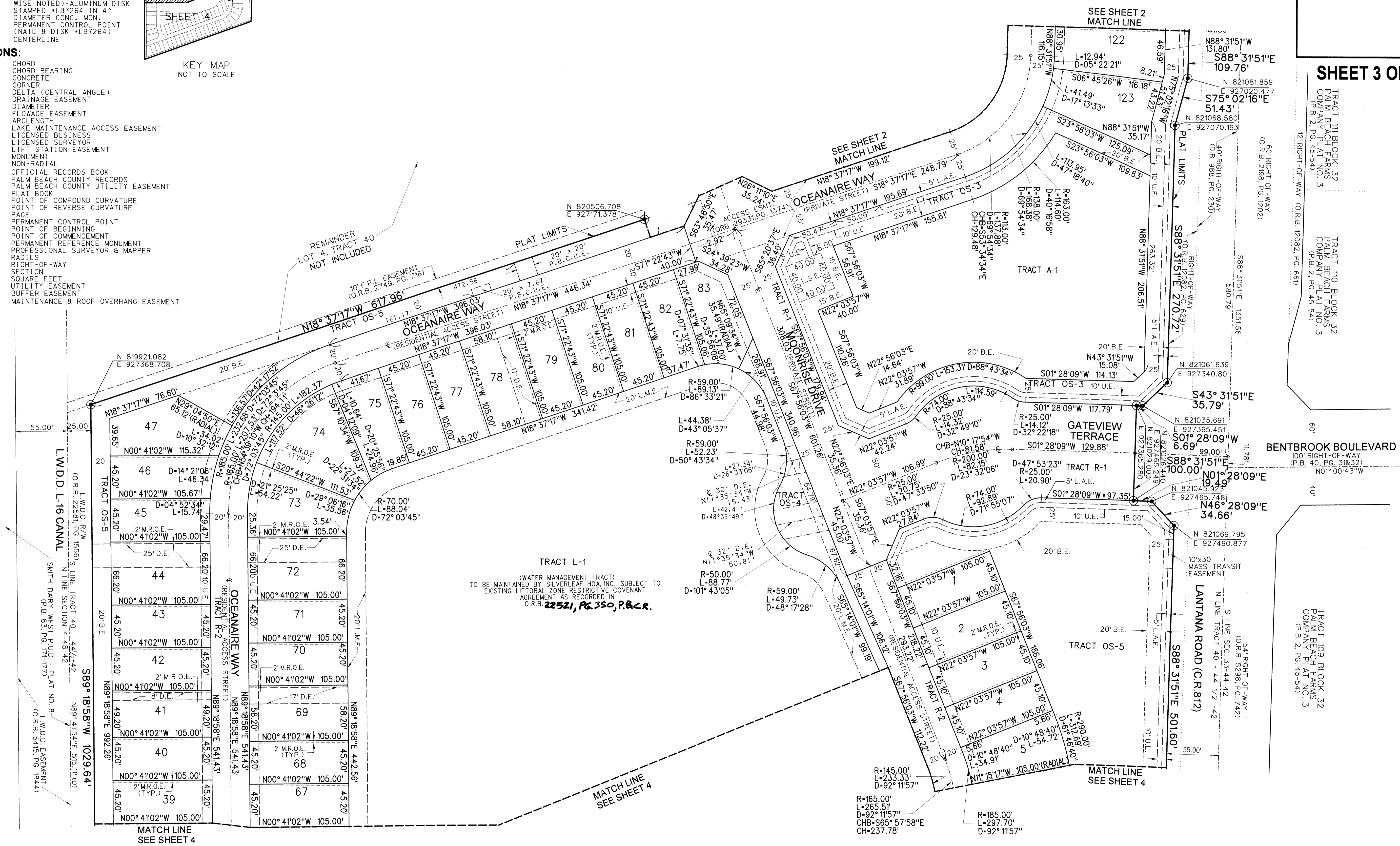


# 162

SHEET 3 OF 4

- LEGEND:**
- SET P.R.M. (UNLESS OTHERWISE NOTED); ALUMINUM DISK STAMPED •LB7264 IN 4" DIAMETER CONC. MON.
  - PERMANENT CONTROL POINT (NAIL & DISK •LB7264)
  - ⊕ CENTERLINE

- ABBREVIATIONS:**
- CH CHORD
  - CHB CHORD BEARING
  - CONC. CONCRETE
  - COR. CORNER
  - D DELTA (CENTRAL ANGLE)
  - D.E. DRAINAGE EASEMENT
  - DIA. DIAMETER
  - F.E. FLOWAGE EASEMENT
  - L ARCLength
  - L.M.A.E. LAKE MAINTENANCE ACCESS EASEMENT
  - L.B. LICENSED BUSINESS
  - L.S. LICENSED SURVEYOR
  - L.S.E. LIFT STATION EASEMENT
  - MON. MONUMENT
  - N.R. NON-RADIAL
  - O.R.B. OFFICIAL RECORDS BOOK
  - P.B.C.R. PALM BEACH COUNTY RECORDS
  - P.B.C.U.E. PALM BEACH COUNTY UTILITY EASEMENT
  - P.B. PLAT BOOK
  - P.C.C. POINT OF COMPOUND CURVATURE
  - P.R.C. POINT OF REVERSE CURVATURE
  - PG. PAGE
  - P.C.P. PERMANENT CONTROL POINT
  - P.O.B. POINT OF BEGINNING
  - P.O.C. POINT OF COMMENCEMENT
  - P.R.M. PERMANENT REFERENCE MONUMENT
  - P.S.M. PROFESSIONAL SURVEYOR & MAPPER
  - R RADIUS
  - R/W RIGHT-OF-WAY
  - SEC. SECTION
  - S SQUARE FEET
  - U.E. UTILITY EASEMENT
  - B.E. BUFFER EASEMENT
  - M.R.O.E. MAINTENANCE & ROOF OVERHANG EASEMENT



TRACT L-1  
(WATER MANAGEMENT TRACT)  
TO BE MAINTAINED BY SILVERLEAF HOA, INC. SUBJECT TO EXISTING LITTORAL ZONE RESTRICTIVE COVENANT AGREEMENT AS RECORDED IN O.R.B. 22521, PG. 350, P.B.C.R.

L.W.D.D. L-16 CANAL  
(O.R.B. 22581, PG. 1556)  
S. LINE TRACT 40 - 44 1/2 - 42  
N. LINE SECTION 4-45-42  
SMITH DAIRY WEST P.U.D. - PLAT NO. 8  
(P.B. 853, PG. 171-177)  
L.W.D.D. EASEMENT  
(O.R.B. 5415, PG. 1844)

TRACT 111 BLOCK 32  
PALM BEACH FARMS  
COMPANY PLAT NO. 3  
(P.B. 2, PG. 45-54)

TRACT 110 BLOCK 32  
PALM BEACH FARMS  
COMPANY PLAT NO. 3  
(P.B. 2, PG. 45-54)

BENTBROOK BOULEVARD  
100' RIGHT-OF-WAY  
(P.B. 40, PG. 318-32)  
N01°00'43"W

TRACT 109 BLOCK 32  
PALM BEACH FARMS  
COMPANY PLAT NO. 3  
(P.B. 2, PG. 45-54)

LANTANA ROAD (C.R. 812)  
S. LINE TRACT 40 - 44 1/2 - 42  
(O.R.B. 5298, PG. 742)  
54' RIGHT-OF-WAY

GATEVIEW TERRACE  
S01°28'09"W 129.88'  
S01°28'09"W 117.79'  
S01°28'09"W 114.13'  
S01°28'09"W 100.00'  
S01°28'09"W 99.00'  
S01°28'09"W 99.00'

TRACT OS-3  
S18°37'17"W 248.79'  
S18°37'17"W 195.69'  
S18°37'17"W 155.61'  
S18°37'17"W 109.63'  
S18°37'17"W 60.51'

SEE SHEET 2 MATCH LINE

SEE SHEET 2 MATCH LINE

SEE SHEET 4 MATCH LINE

SEE SHEET 4 MATCH LINE

REMAINDER LOT 4, TRACT 40 NOT INCLUDED

PLAT LIMITS

ACCESS (PRIVATE STREET) 233.31, PG. 1374

ACCESS (PRIVATE STREET) 233.31, PG. 1374

ACCESS (PRIVATE STREET) 233.31, PG. 1374

ACCESS (PRIVATE STREET) 233.31, PG. 1374

ACCESS (PRIVATE STREET) 233.31, PG. 1374

ACCESS (PRIVATE STREET) 233.31, PG. 1374

ACCESS (PRIVATE STREET) 233.31, PG. 1374

ACCESS (PRIVATE STREET) 233.31, PG. 1374

ACCESS (PRIVATE STREET) 233.31, PG. 1374

ACCESS (PRIVATE STREET) 233.31, PG. 1374

ACCESS (PRIVATE STREET) 233.31, PG. 1374

ACCESS (PRIVATE STREET) 233.31, PG. 1374

ACCESS (PRIVATE STREET) 233.31, PG. 1374