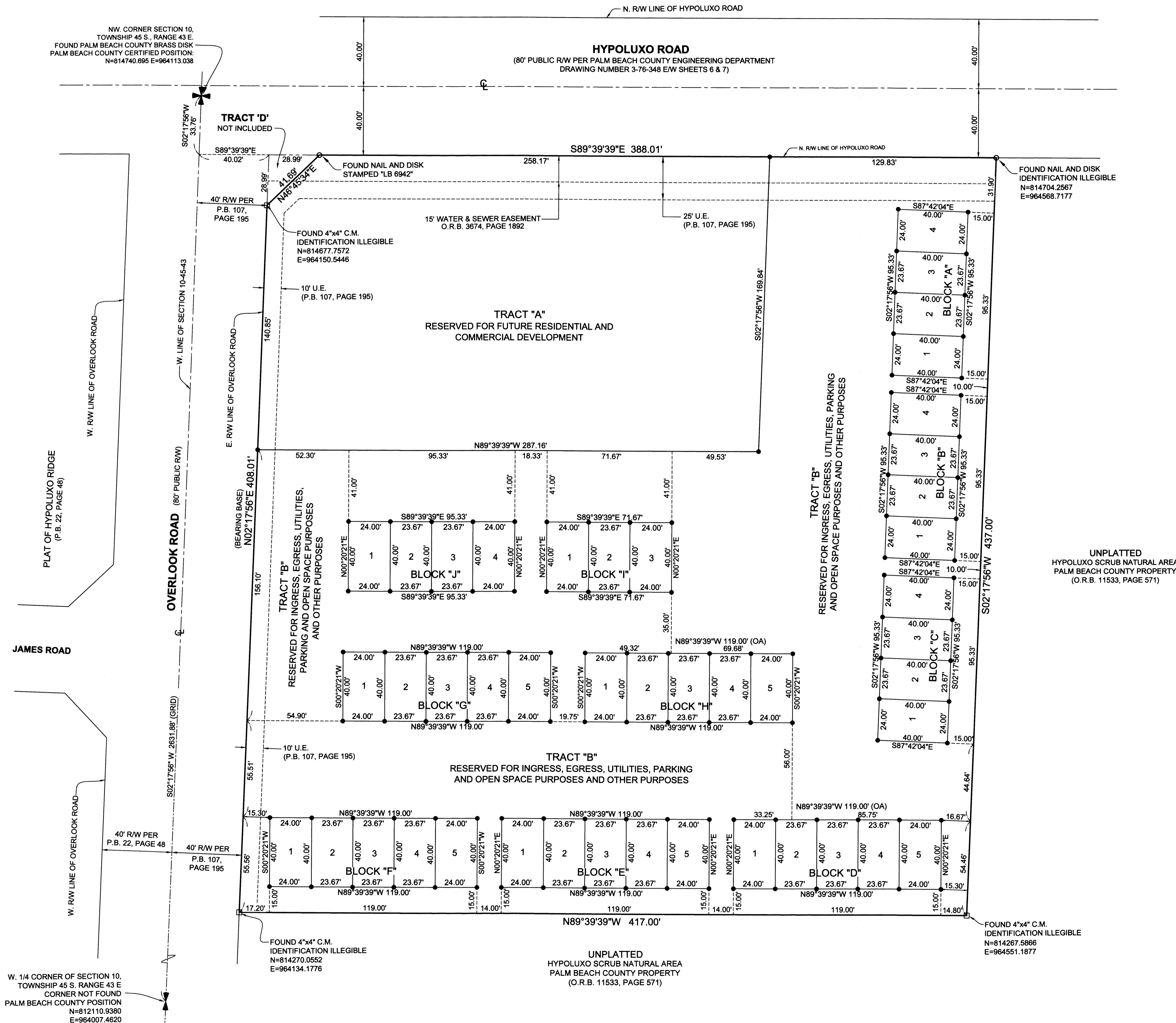


HYPOLUXO COMMONS

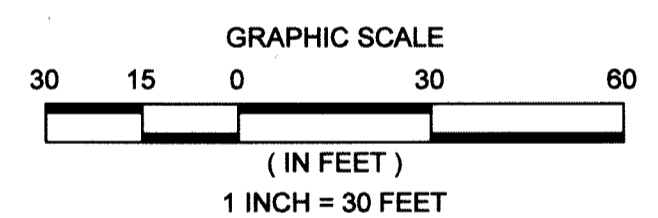
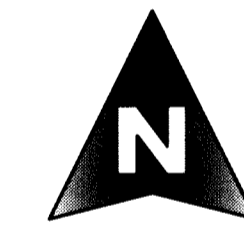
BEING A REPLAT & A PORTION OF PORTER PLACE, AS RECORDED IN PLAT BOOK 107, PAGES 195 AND 196, PUBLIC RECORDS OF PALM BEACH COUNTY, FLORIDA, AND LYING IN SECTION 10, TOWNSHIP 44 SOUTH, RANGE 43 EAST, TOWN OF HYPOLUXO, PALM BEACH COUNTY, FLORIDA.
OCTOBER, 2017 SHEET 2 OF 2

167



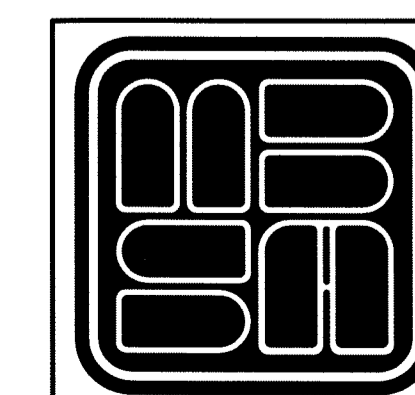
LEGEND

- P.R.M. = PERMANENT REFERENCE MONUMENT
- C.M. = CONCRETE MONUMENT
- O.R.B. = OFFICIAL RECORD BOOK
- D.B. = DEED BOOK
- P.B. = PLAT BOOK
- P.B.C. = PALM BEACH COUNTY PROFESSIONAL SURVEYOR AND MAPPER
- P.S.M. = PROFESSIONAL SURVEYOR AND MAPPER
- TYP. = TYPICAL
- FND. = FOUND
- R/W. = RIGHT OF WAY
- U.E. = UTILITY EASEMENT
- D.E. = DRAINAGE EASEMENT
- R. = RADIUS
- L. = ARC LENGTH
- Δ. = CURVE CENTRAL ANGLE
- C.B. = CHORD BEARING
- C.L. = CHORD LENGTH
- R.L. = RADIAL LINE
- L.A.E. = LIMITED ACCESS EASEMENT
- CL. = CENTERLINE
- FPL. = FLORIDA POWER AND LIGHT COMPANY
- . = FOUND 4" X 4" C.M. WITH DISK AS SHOWN
- . = SET 4" X 4" X 24" C.M. WITH DISK STAMPED PRM LB#2438
- . = SET 1/2" IRON ROD WITH CAP STAMPED MBSA LB 2438
- . = FOUND NAIL AND DISK AS SHOWN
- ⊙. = SECTION CORNER
- ⊙. = 1/4 SECTION CORNER



COORDINATE NOTE:
STATE PLANE COORDINATES SHOWN ARE GRID DATUM, NAD 83 1990 ADJUSTMENT, FLORIDA EAST ZONE, COORDINATE SYSTEM 1983 STATE PLANE, TRANSVERSE MERCATOR PROJECTION
LINEAR UNIT = US SURVEY FEET
ALL DISTANCES ARE GROUND
SCALE FACTOR = 1.0000499
GROUND DISTANCE X SCALE FACTOR = GRID DISTANCE
BEARINGS AS SHOWN HEREON ARE GRID DATUM NAD 83, 1990 ADJUSTMENT, FLORIDA EAST ZONE.

SHEET 2 OF 2



MICHAEL B. SCHORAH & ASSOCIATES, INC.
1850 FOREST HILL BLVD., SUITE 206
WEST PALM BEACH, FLORIDA 33406
EB# 2438 TEL. (561) 968-0080 FAX. (561) 642-9726 LB# 2438

HYPOLUXO COMMONS