

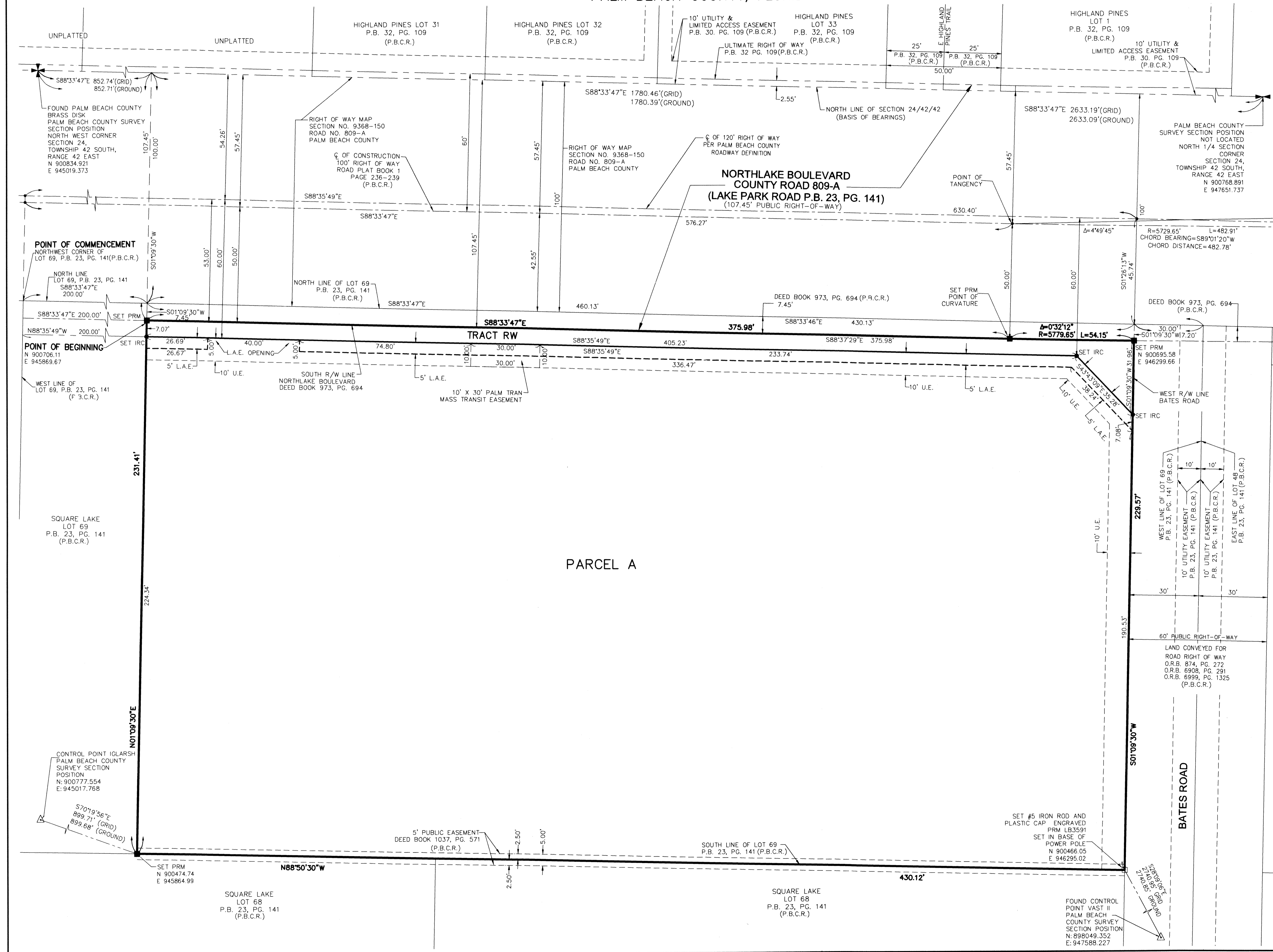
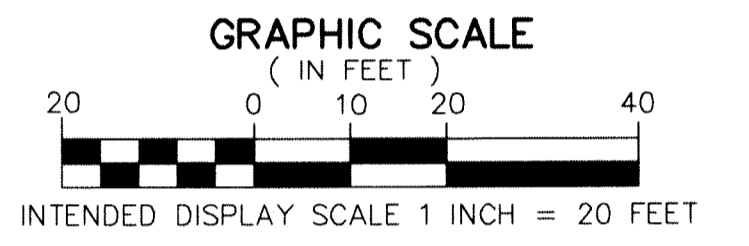
# PLACE OF HOPE LANE OUTREACH CENTER

BEING A REPLAT OF A PORTION OF LOT 69 OF SQUARE LAKE,  
AS RECORDED IN PLAT BOOK 23, PAGE 141 OF THE  
PUBLIC RECORDS OF PALM BEACH COUNTY, FLORIDA  
LYING IN SECTION 24, TOWNSHIP 42 SOUTH, RANGE 42 EAST,  
PALM BEACH COUNTY, FLORIDA

THIS INSTRUMENT PREPARED BY  
DAVID P. LINDLEY  
OF  
**CAULFIELD and WHEELER, INC.**  
SURVEYORS - ENGINEERS - PLANNERS  
7900 GLADES ROAD, SUITE 100  
BOCA RATON, FLORIDA 33434 - (561)392-1991  
CERTIFICATE OF AUTHORIZATION NO. LB3591

# 181

SHEET 2 OF 2



- LEGEND/ABBREVIATIONS**
- CL - CENTERLINE
  - CCR - CERTIFIED CORNER RECORD
  - E - EASTING (WHEN USED WITH COORDINATES)
  - L.A.E. - LIMITED ACCESS EASEMENT
  - LB - LICENSED BUSINESS
  - L.W.D. - LAKE WORTH DRAINAGE DISTRICT
  - N - NORTHING (WHEN USED WITH COORDINATES)
  - O.R.B. - OFFICIAL RECORD BOOK
  - P.B. - PLAT BOOK
  - P.B.C.R. - PALM BEACH COUNTY RECORDS
  - PG. - PAGE
  - R/W - RIGHT-OF-WAY
  - U.E. - UTILITY EASEMENT
  - PRM - DENOTES PERMANENT REFERENCE MONUMENT  
4" x 4" x 24" CONCRETE MONUMENT WITH ALUMINUM DISK STAMPED "C&W PRM LB3591"
  - IRC - DENOTES 5/8 INCH IRON ROD AND CAP LB3591
  - △ - DENOTES PALM BEACH COUNTY CONTROL POINT

**NOTES**  
**COORDINATES, BEARINGS AND DISTANCES**

COORDINATES SHOWN ARE GRID  
DATUM = NAD 83 (90/98 ADJUSTMENT)  
ZONE = FLORIDA EAST  
LINEAR UNIT = US SURVEY FEET  
COORDINATE SYSTEM 1983 STATE PLANE  
TRANSVERSE MERCATOR PROJECTION  
ALL DISTANCES ARE GROUND  
SCALE FACTOR = 1.00003771  
GROUND DISTANCE X SCALE FACTOR = GRID DISTANCE  
BEARINGS AS SHOWN HEREON ARE GRID DATUM,  
NAD 83 (90/98 ADJUSTMENT), FLORIDA EAST ZONE.