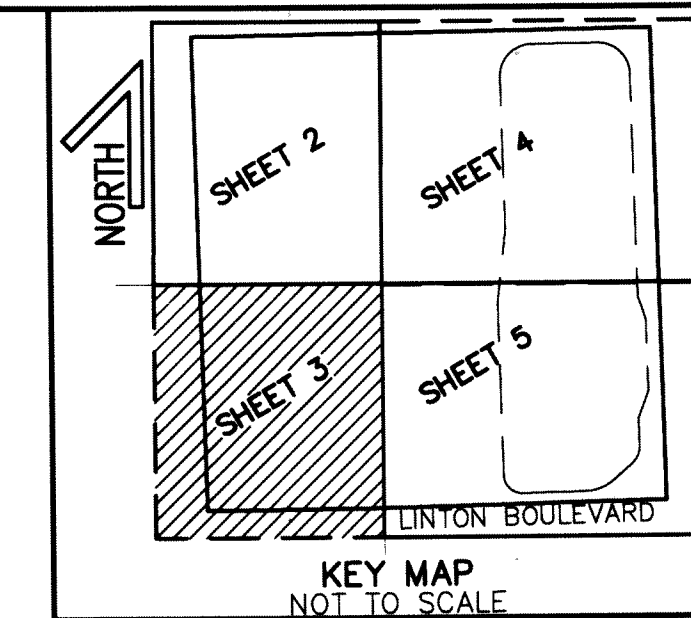


DELRAY MEDICAL PARCEL

A REPLAT OF PARCEL "A", DELRAY OUTPATIENT PROPERTIES PLAT, ACCORDING TO THE PLAT THEREOF, AS RECORDED IN PLAT BOOK 99, PAGES 197 THROUGH 201 OF THE PUBLIC RECORDS OF PALM BEACH COUNTY, FLORIDA, LYING IN SECTION 24, TOWNSHIP 46 SOUTH, RANGE 42 EAST, CITY OF DELRAY BEACH, PALM BEACH COUNTY FLORIDA.



189

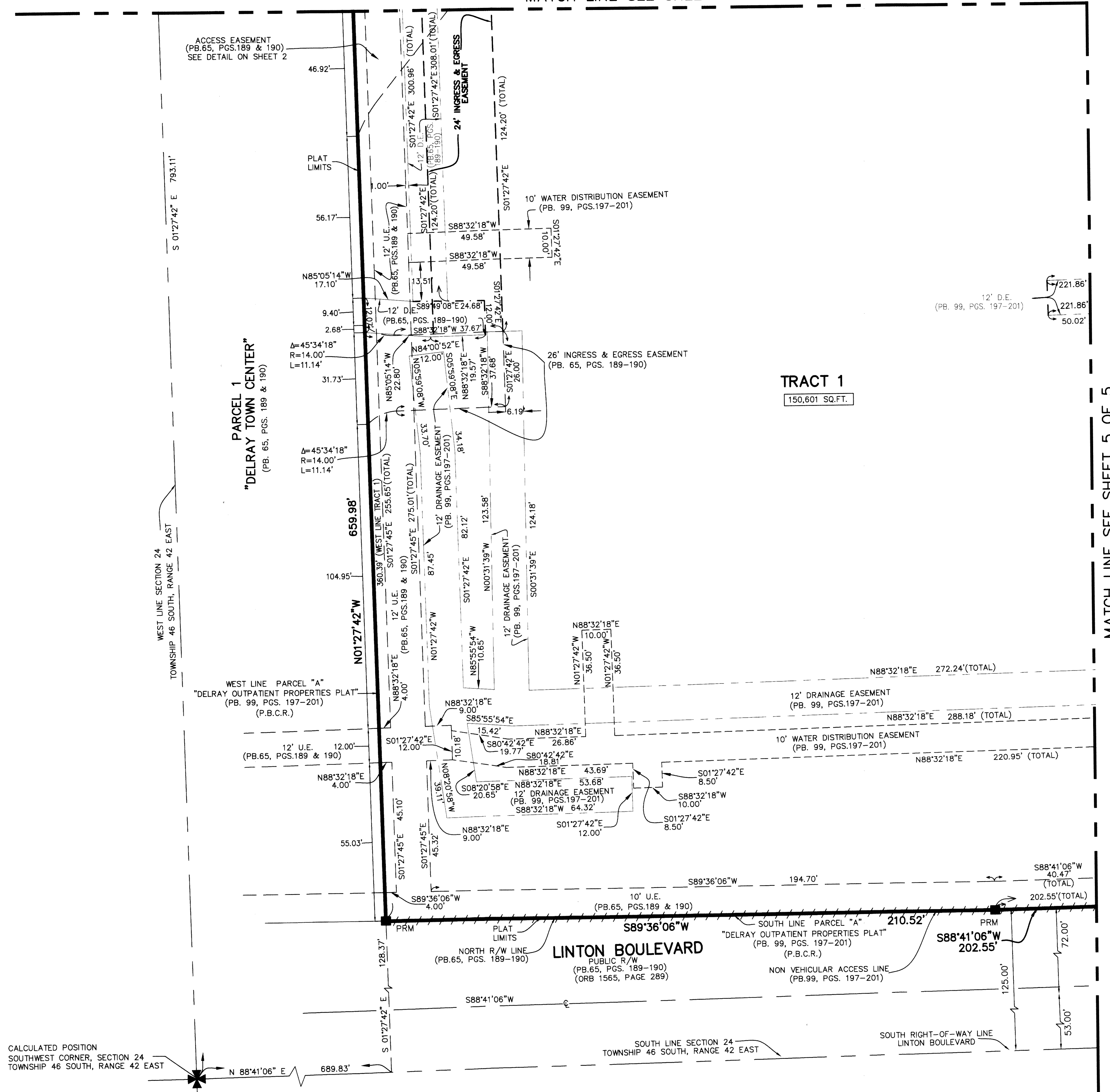
STATE OF FLORIDA
 COUNTY OF PALM BEACH
 THIS PLAT WAS FILED FOR
 RECORD AT _____ M.
 THIS _____ DAY OF _____
 A.D. 20____ AND DULY RECORDED
 IN PLAT BOOK _____ ON
 PAGES _____ THRU _____

SHARON R. BOCK
 CLERK CIRCUIT COURT

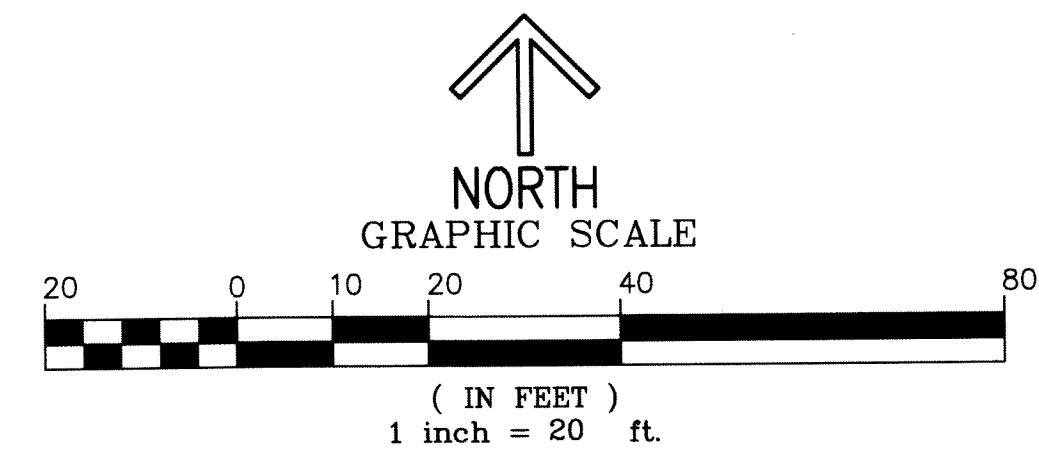
BY: _____
 DEPUTY CLERK

SHEET 3 OF 5

MATCH LINE SEE SHEET 2 OF 5



THIS INSTRUMENT WAS PREPARED BY
 JEFFERY R. WAGNER, PLS
 OF
CAULFIELD and WHEELER, INC.
 ENGINEERS - PLANNERS - SURVEYORS
 7900 GLADES ROAD, SUITE 100
 BOCA RATON, FLORIDA 33434 - (561)392-1991



MATCH LINE SEE SHEET 5 OF 5

TRACT 1
 150,601 SQ.FT.

CALCULATED POSITION
 SOUTHWEST CORNER, SECTION 24
 TOWNSHIP 46 SOUTH, RANGE 42 EAST