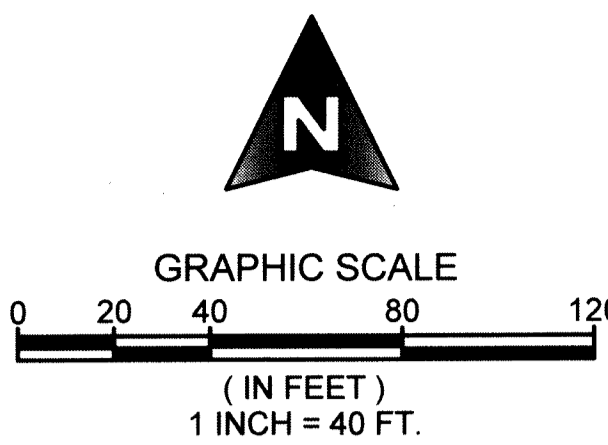


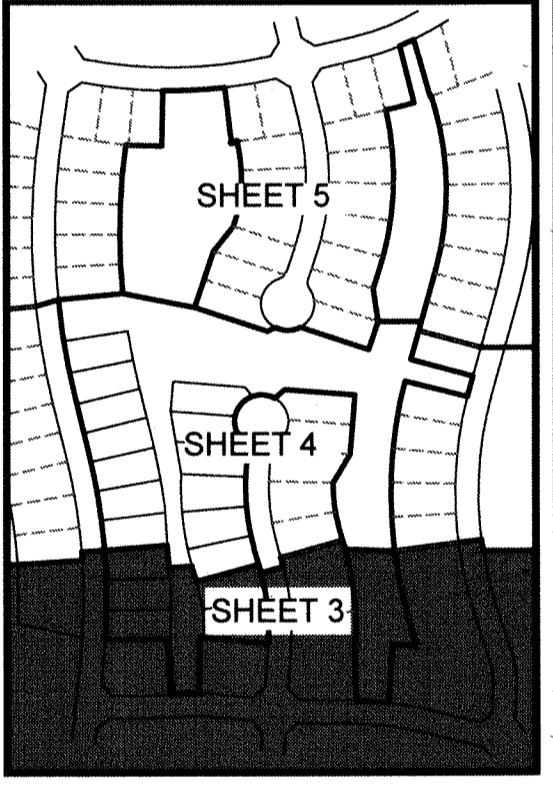
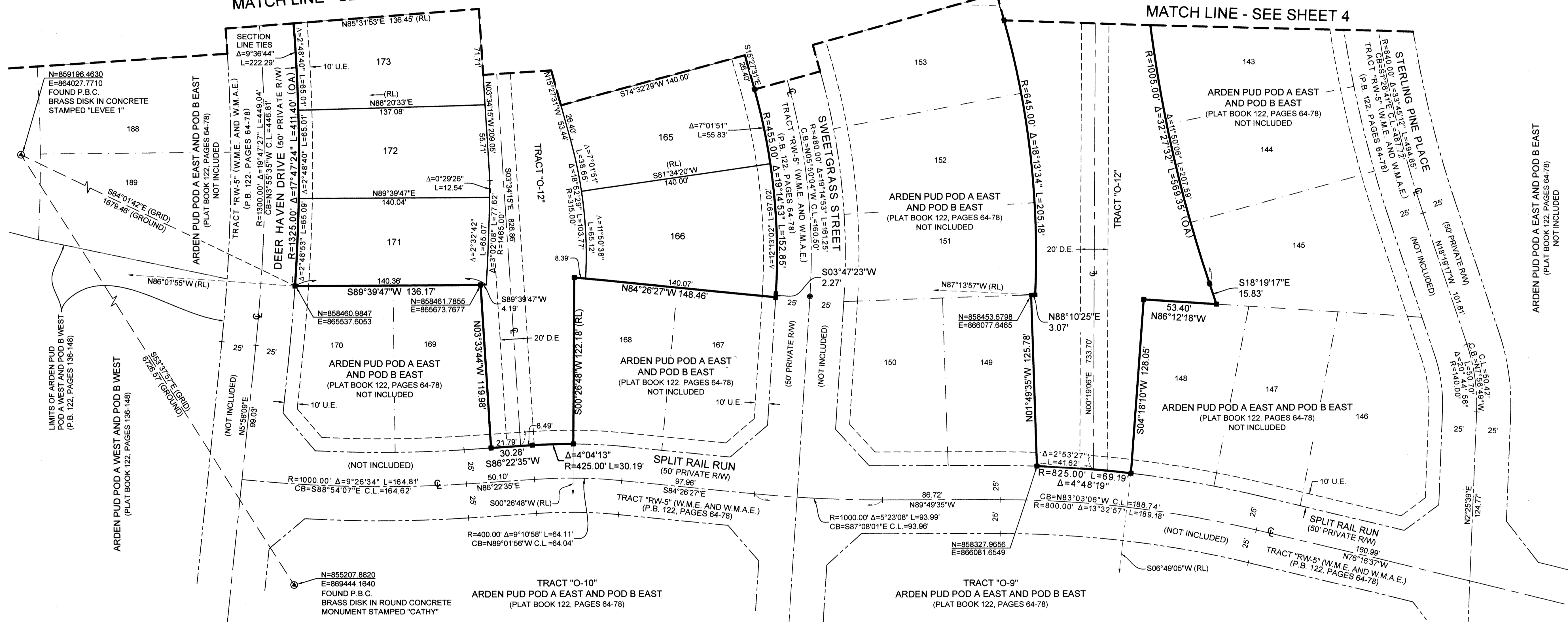
ARDEN P.U.D. POD A EAST AND POD B EAST REPLAT 1

BEING A REPLAT OF LOTS 159 THROUGH 166, LOTS 171 THROUGH 180 AND TRACT "O-12", ARDEN P.U.D. POD A EAST AND POD B EAST, AS RECORDED IN PLAT BOOK 122, PAGES 64 THROUGH 78, PUBLIC RECORDS OF PALM BEACH COUNTY, FLORIDA, AND LYING IN SECTIONS, 28 AND 33, TOWNSHIP 43 SOUTH, RANGE 40 EAST, PALM BEACH COUNTY, FLORIDA.



MATCH LINE - SEE SHEET 4

MATCH LINE - SEE SHEET 4

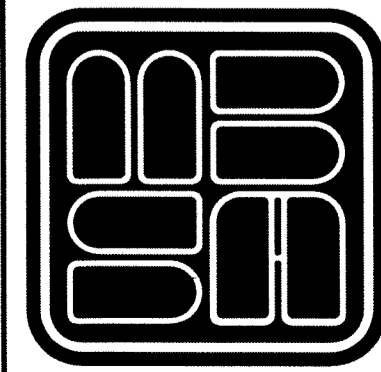


KEY MAP NOT TO SCALE

COORDINATES NOTE:

STATE PLANE COORDINATES SHOWN ARE GRID
DATUM = NAD 83, 1990 ADJUSTMENT
ZONE = FLORIDA EAST
LINEAR UNITS = US SURVEY FOOT
COORDINATE SYSTEM 1983 STATE PLANE TRANSVERSE MERCATOR PROJECTION
ALL DISTANCES ARE GROUND
PROJECT SCALE FACTOR = 0.99999219
GROUND DISTANCE X SCALE FACTOR = GRID DISTANCE
BEARINGS AS SHOWN HEREON ARE GRID DATUM, NAD 83 1990 ADJUSTMENT, FLORIDA EAST ZONE.

NOTE:
ALL EASEMENTS AS SHOWN HEREON ARE BASED ON ARDEN P.U.D. POD A EAST AND POD B EAST, AS RECORDED IN PLAT BOOK 122, PAGES 64 THROUGH 78, PUBLIC RECORDS OF PALM BEACH COUNTY, FLORIDA, NOTICE: ALL W.M.E. WILL BE RE-DEDICATED WITH THIS PLAT.



MICHAEL B. SCHORAH & ASSOCIATES, INC.
1950 FOREST HILL BLVD., SUITE 206
WEST PALM BEACH, FLORIDA 33406
EB# 2438 TEL. (561) 968-0080 FAX. (561) 642-9726 LB# 2438

**ARDEN P.U.D.
POD A EAST AND POD B EAST REPLAT 1**