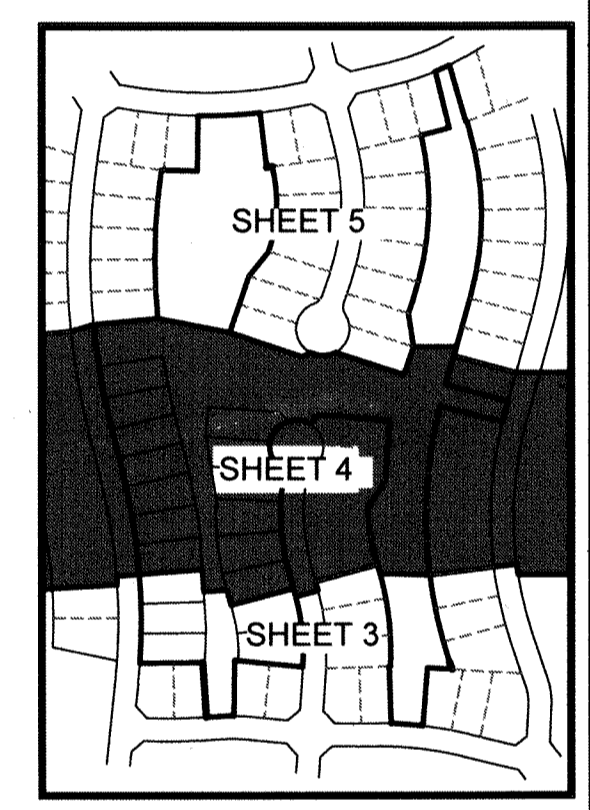
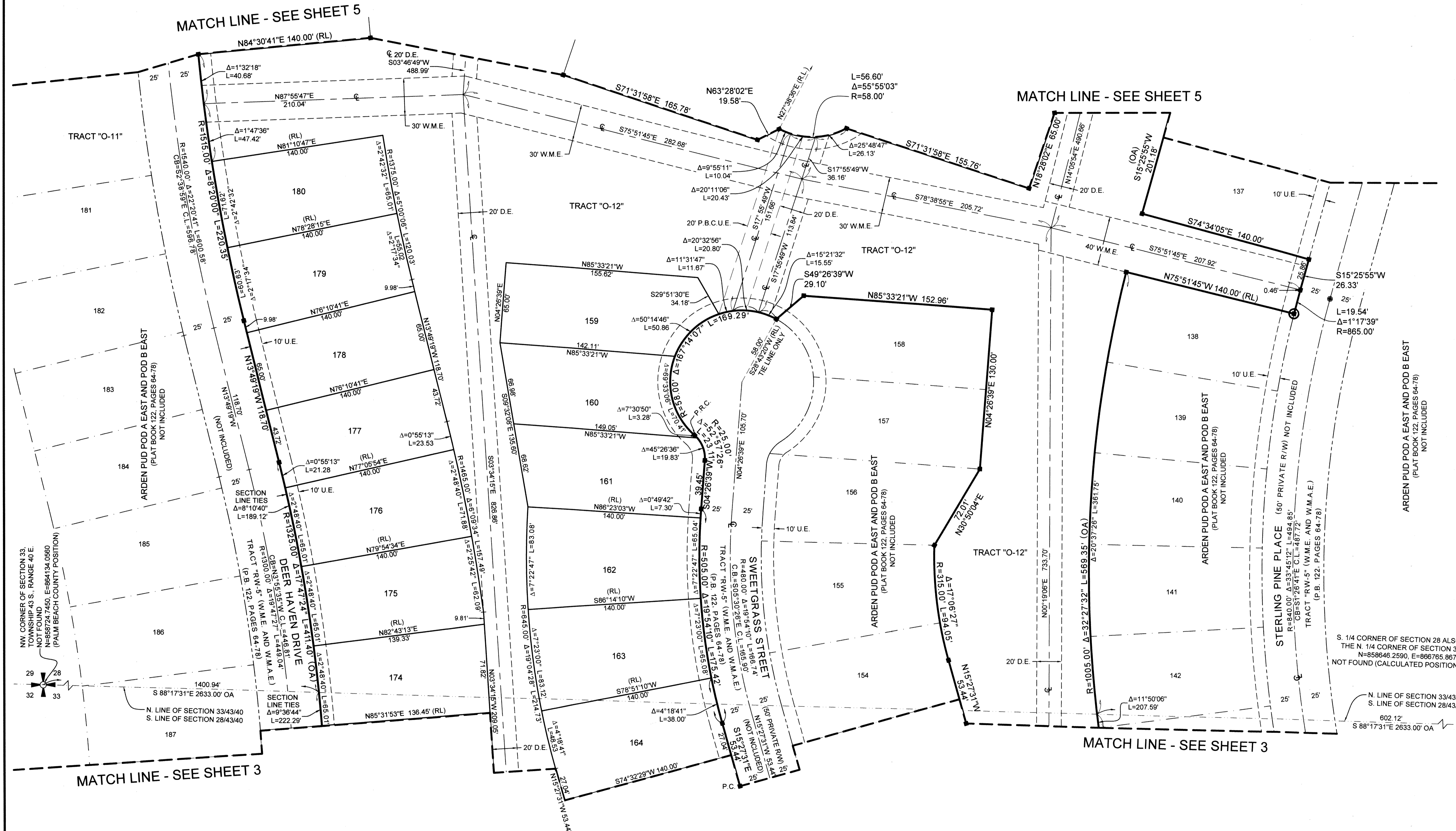
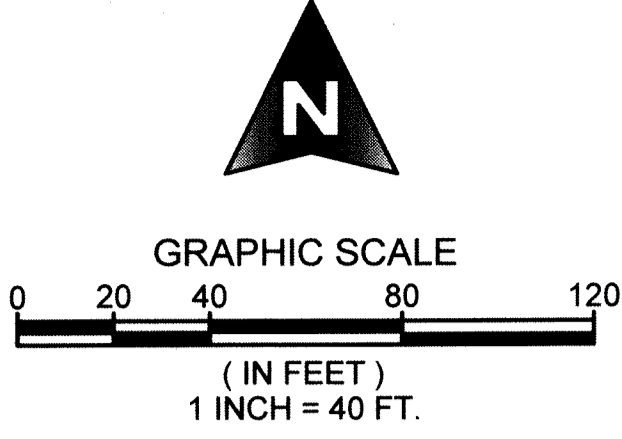


ARDEN P.U.D. POD A EAST AND POD B EAST REPLAT 1

BEING A REPLAT OF LOTS 159 THROUGH 166, LOTS 171 THROUGH 180 AND TRACT "O-12", ARDEN P.U.D. POD A EAST AND POD B EAST, AS RECORDED IN PLAT BOOK 122, PAGES 64 THROUGH 78, PUBLIC RECORDS OF PALM BEACH COUNTY, FLORIDA, AND LYING IN SECTIONS, 28 AND 33, TOWNSHIP 43 SOUTH, RANGE 40 EAST, PALM BEACH COUNTY, FLORIDA.

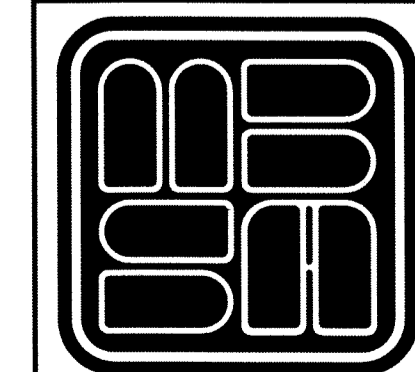
6



KEY MAP NOT TO SCALE

COORDINATES NOTE:
 STATE PLANE COORDINATES SHOWN ARE GRID
 DATUM = NAD 83, 1990 ADJUSTMENT
 ZONE = FLORIDA EAST
 LINEAR UNITS = US SURVEY FOOT
 COORDINATE SYSTEM 1983 STATE PLANE TRANSVERSE MERCATOR PROJECTION
 ALL DISTANCES ARE GROUND
 PROJECT SCALE FACTOR = 0.99999219
 GROUND DISTANCE X SCALE FACTOR = GRID DISTANCE
 BEARINGS AS SHOWN HEREON ARE GRID DATUM, NAD 83 1990 ADJUSTMENT, FLORIDA EAST ZONE.

NOTE:
 ALL EASEMENTS AS SHOWN HEREON ARE BASED ON ARDEN P.U.D. POD A EAST AND POD B EAST, AS RECORDED IN PLAT BOOK 122, PAGES 64 THROUGH 78, PUBLIC RECORDS OF PALM BEACH COUNTY, FLORIDA, NOTICE: ALL W.M.E. WILL BE RE-DEDICATED WITH THIS PLAT.



MICHAEL B. SCHORAH & ASSOCIATES, INC.
 1850 FOREST HILL BLVD., SUITE 206
 WEST PALM BEACH, FLORIDA 33406
 EB# 2438 TEL. (561) 968-0080 FAX. (561) 642-9726 LB# 2438

ARDEN P.U.D. POD A EAST AND POD B EAST REPLAT 1