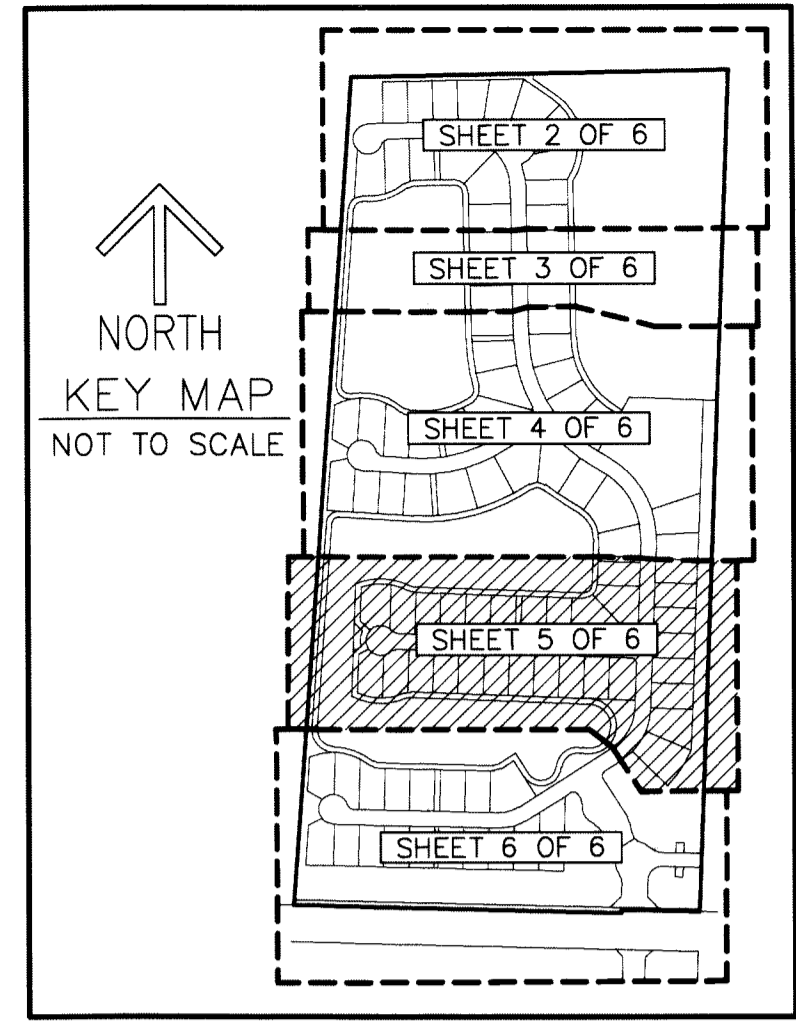
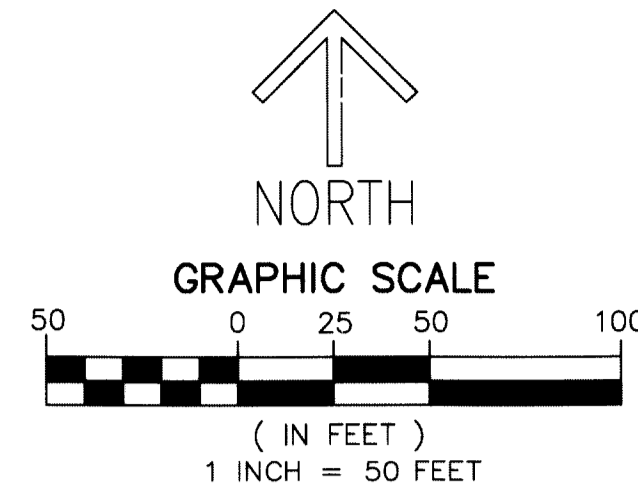


# ANCIENT TREE

BEING A PORTION OF THE WEST ONE-HALF OF SECTION 14,  
TOWNSHIP 42 SOUTH, RANGE 41 EAST,  
CITY OF PALM BEACH GARDENS, PALM BEACH COUNTY, FLORIDA

THIS INSTRUMENT PREPARED BY  
DAVID P. LINDLEY  
OF  
**CAULFIELD and WHEELER, INC.**  
SURVEYORS - ENGINEERS - PLANNERS  
7900 GLADES ROAD, SUITE 100  
BOCA RATON, FLORIDA 33434 - (561)392-1991  
CERTIFICATE OF AUTHORIZATION NO. LB3591  
SEPTEMBER 2017

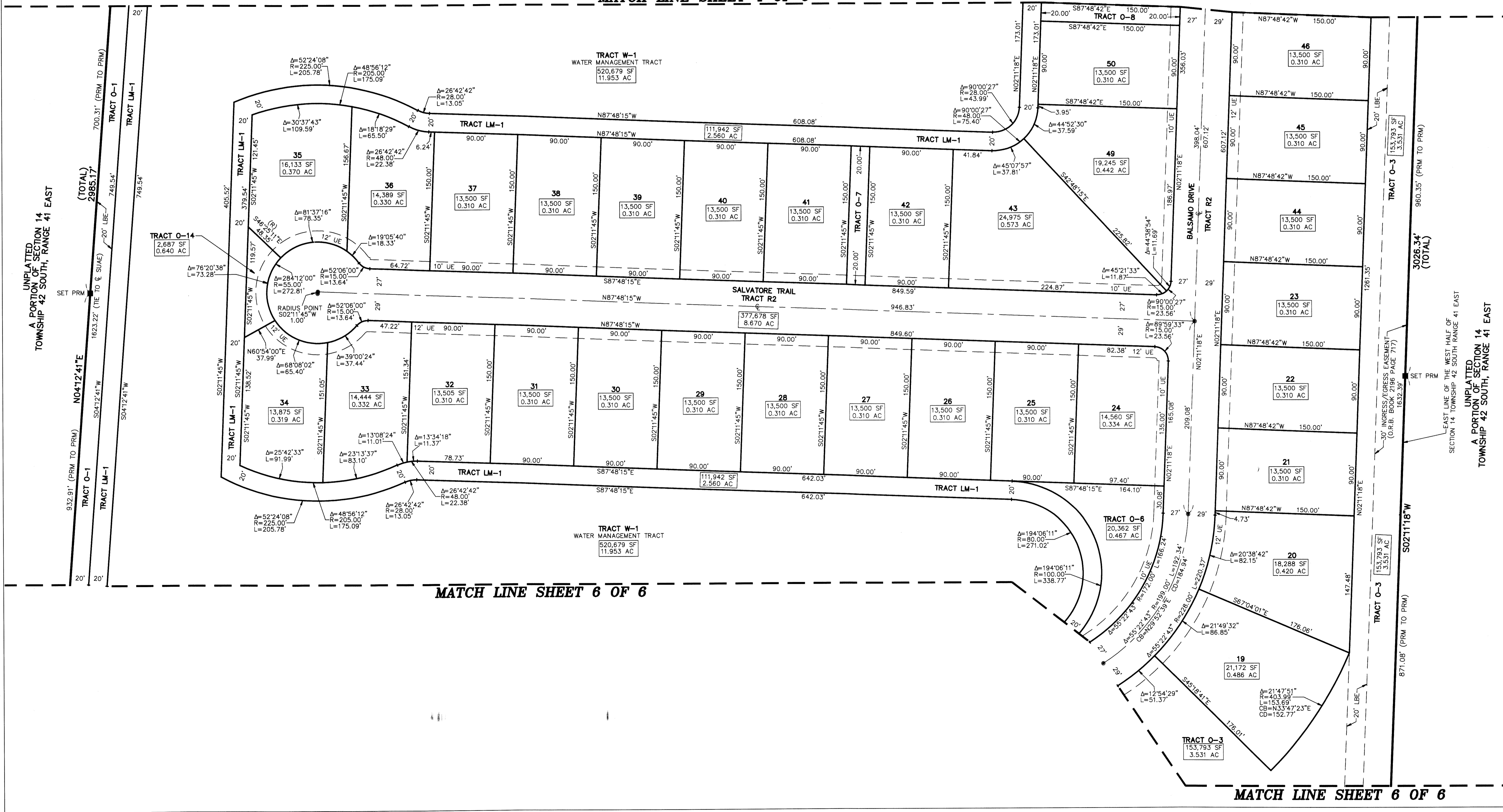
- LEGEND/ABBREVIATIONS**
- CL - CENTERLINE
  - Δ - DELTA (CENTRAL ANGLE)
  - AC - ACRES
  - CB - CHORD BEARING
  - CD - CHORD DISTANCE
  - DE - DRAINAGE EASEMENT
  - L - ARC LENGTH
  - LAE - LIMITED ACCESS EASEMENT
  - LB - LICENSED BUSINESS
  - LBE - LANDSCAPE BUFFER EASEMENT
  - LSE - LIFT STATION EASEMENT
  - O.R.B. - OFFICIAL RECORD BOOK
  - P.P.A.E. - PERPETUAL PUBLIC ACCESS EASEMENT
  - R - RADIUS
  - (R) - INDICATES RADIAL LINE
  - SF - SQUARE FEET
  - SUAE - SEACOAST UTILITY AUTHORITY EASEMENT
  - UE - UTILITY EASEMENT
  - PRM - DENOTES PERMANENT REFERENCE MONUMENT  
4" x 4" x 24" CONCRETE MONUMENT WITH  
ALUMINUM DISK STAMPED "C&W PRM LB3591"
  - - DENOTES PERMANENT CONTROL POINT



# 21

**SHEET 5 OF 6**

**MATCH LINE SHEET 4 OF 6**



**MATCH LINE SHEET 6 OF 6**

**MATCH LINE SHEET 6 OF 6**

UNPLATTED  
A PORTION OF SECTION 14  
TOWNSHIP 42 SOUTH, RANGE 41 EAST

UNPLATTED  
A PORTION OF SECTION 14  
TOWNSHIP 42 SOUTH, RANGE 41 EAST