

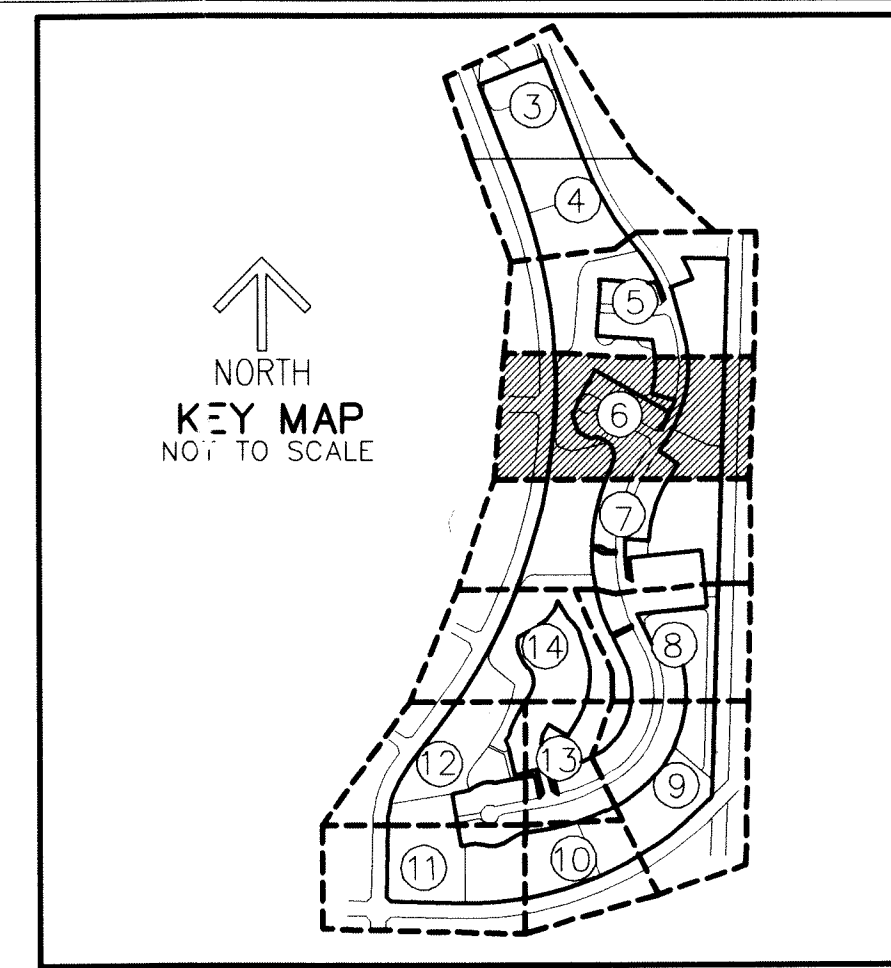
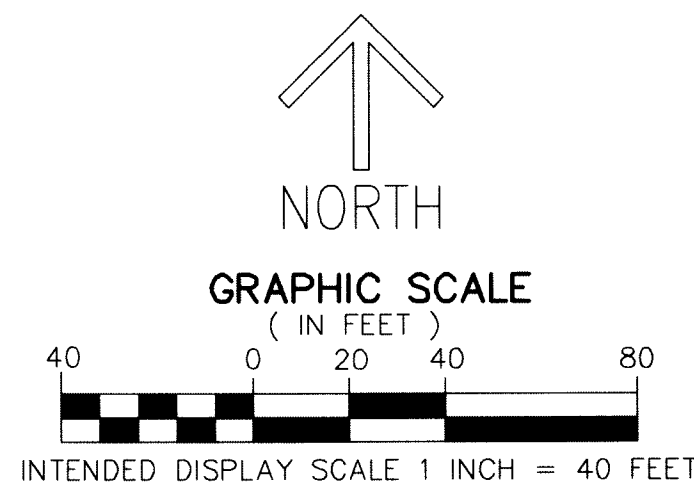
WINDING TRAILS

BEING A REPLAT OF PORTIONS OF PARCELS F, H, J, K, M AND T, LAKEFIELD OF THE LANDINGS AT WELLINGTON P.U.D. - PLAT 2A, AS RECORDED IN PLAT BOOK 64, PAGES 97 THROUGH 105 OF THE PUBLIC RECORDS OF PALM BEACH COUNTY, FLORIDA, TOGETHER WITH PARCELS D, E, F AND G, LAKEFIELD OF THE LANDINGS AT WELLINGTON P.U.D. - PLAT 2B, AS RECORDED IN PLAT BOOK 63, PAGES 27 THROUGH 31 OF THE PUBLIC RECORDS OF PALM BEACH COUNTY, FLORIDA, LYING IN SECTION 18, TOWNSHIP 44 SOUTH, RANGE 41 EAST, VILLAGE OF WELLINGTON, PALM BEACH COUNTY, FLORIDA

THIS INSTRUMENT PREPARED BY
DAVID P. LINDLEY
OF
CAULFIELD and WHEELER, INC.
SURVEYORS - ENGINEERS - PLANNERS
7900 GLADES ROAD, SUITE 100
BOCA RATON, FLORIDA 33434 - (561)392-1991
CERTIFICATE OF AUTHORIZATION NO. LB3591
OCTOBER-2017

LEGEND/ABBREVIATIONS

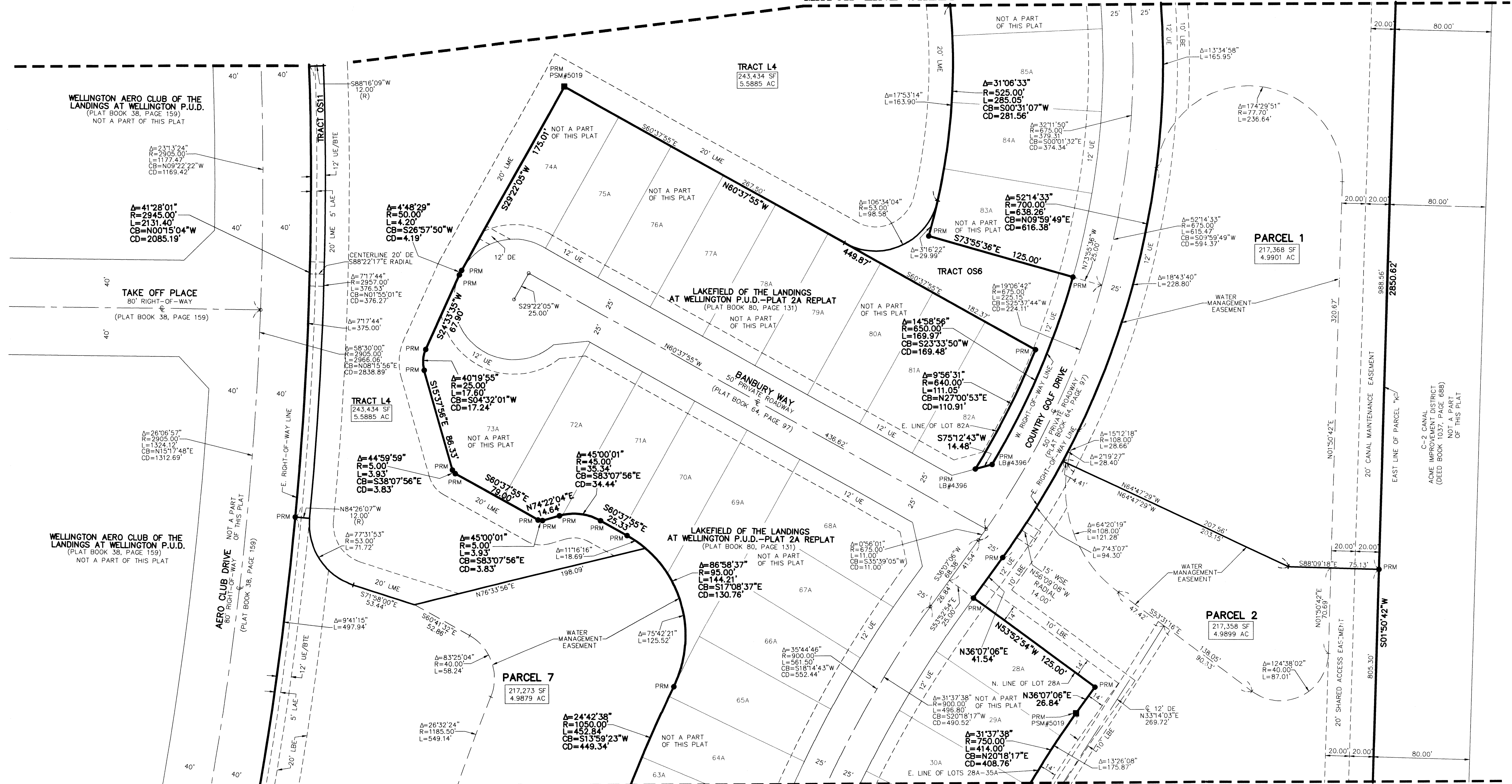
- ☉ - CENTERLINE
- Δ - DELTA (CENTRAL ANGLE)
- AC - ACRES
- BTE - BRIDLE TRAIL EASEMENT
- CB - LONG CHORD BEARING
- CD - LONG CHORD DISTANCE
- DE - DRAINAGE EASEMENT
- L - ARC LENGTH
- LAE - LIMITED ACCESS EASEMENT
- LB - LICENSED BUSINESS
- LBE - LANDSCAPE BUFFER EASEMENT
- LME - LAKE MAINTENANCE EASEMENT
- LMAE - LAKE MAINTENANCE ACCESS EASEMENT
- MPPE - MULTI PURPOSE PATH EASEMENT
- O.R.B. - OFFICIAL RECORD BOOK
- R - RADIUS
- (R) - INDICATES RADIAL LINE
- SF - SQUARE FEET
- UE - UTILITY EASEMENT
- WSE - WATER AND SEWER EASEMENT
- PRM - DENOTES PERMANENT REFERENCE MONUMENT
- PRM - DENOTES PERMANENT REFERENCE MONUMENT SET 5/8" IRON ROD WITH PLASTIC CAP STAMPED "C&W PRM LB#3591" UNLESS OTHERWISE NOTED.



61

SHEET 6 OF 14

MATCH LINE SHEET 5



MATCH LINE SHEET 7