

HISTORIC DEPOT SQUARE REPLAT

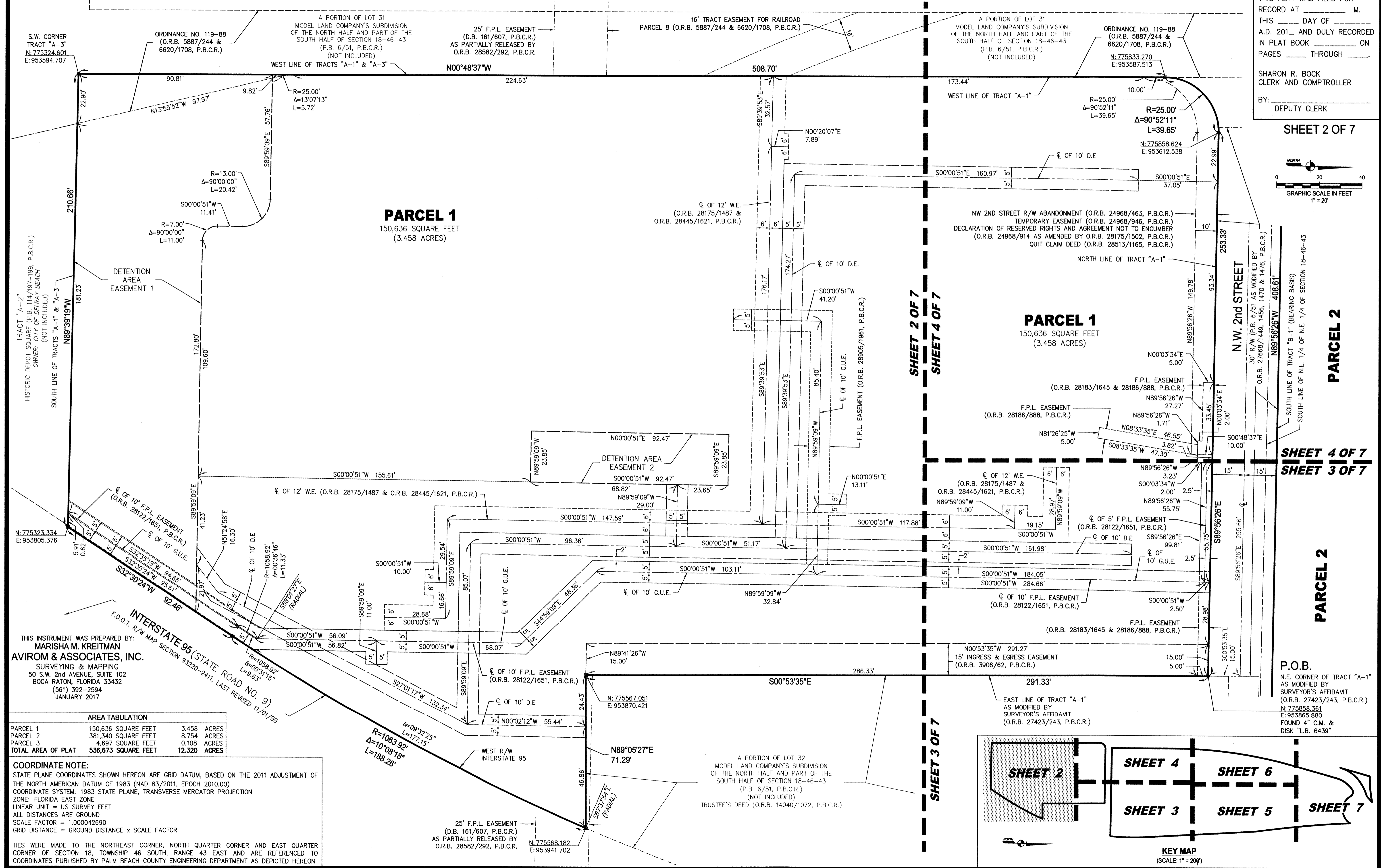
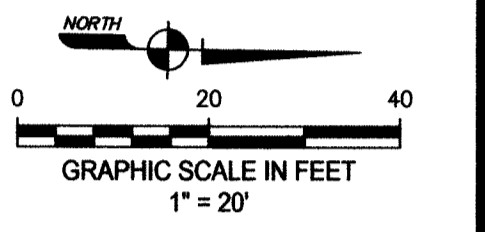
BEING A REPLAT OF TRACTS "A-1", "A-3", "B-1", "B-2" AND A PORTION OF TRACT "C", HISTORIC DEPOT SQUARE, AS RECORDED IN PLAT BOOK 114, PAGES 197 THROUGH 199 AND MODIFIED BY SURVEYOR'S AFFIDAVIT RECORDED IN OFFICIAL RECORDS BOOK 27423, PAGE 243, ALL OF THE PUBLIC RECORDS OF PALM BEACH COUNTY, FLORIDA; TOGETHER WITH A PORTION OF SECTION 18, TOWNSHIP 46 SOUTH, RANGE 43 EAST SAID LANDS SITUATE AND BEING IN SECTION 18, TOWNSHIP 46 SOUTH, RANGE 43 EAST CITY OF DELRAY BEACH, PALM BEACH COUNTY, FLORIDA.

74

STATE OF FLORIDA)
COUNTY OF PALM BEACH)

THIS PLAT WAS FILED FOR RECORD AT _____ M. THIS _____ DAY OF _____ A.D. 201____ AND DULY RECORDED IN PLAT BOOK _____ ON PAGES _____ THROUGH _____ SHARON R. BOCK CLERK AND COMPTROLLER BY: _____ DEPUTY CLERK

SHEET 2 OF 7



THIS INSTRUMENT WAS PREPARED BY:
MARISHA M. KREITMAN
AVIROM & ASSOCIATES, INC.
SURVEYING & MAPPING
50 S.W. 2nd AVENUE, SUITE 102
BOCA RATON, FLORIDA 33432
(561) 392-2594
JANUARY 2017

AREA TABULATION			
PARCEL 1	150,636 SQUARE FEET	3.458 ACRES	
PARCEL 2	381,340 SQUARE FEET	8.754 ACRES	
PARCEL 3	4,697 SQUARE FEET	0.108 ACRES	
TOTAL AREA OF PLAT	536,673 SQUARE FEET	12.320 ACRES	

COORDINATE NOTE:
STATE PLANE COORDINATES SHOWN HEREON ARE GRID DATUM, BASED ON THE 2011 ADJUSTMENT OF THE NORTH AMERICAN DATUM OF 1983 (NAD 83/2011, EPOCH 2010.00)
COORDINATE SYSTEM: 1983 STATE PLANE, TRANSVERSE MERCATOR PROJECTION
ZONE: FLORIDA EAST ZONE
LINEAR UNIT = US SURVEY FEET
ALL DISTANCES ARE GROUND
SCALE FACTOR = 1.000042690
GRID DISTANCE = GROUND DISTANCE x SCALE FACTOR

TIES WERE MADE TO THE NORTHEAST CORNER, NORTH QUARTER CORNER AND EAST QUARTER CORNER OF SECTION 18, TOWNSHIP 46 SOUTH, RANGE 43 EAST AND ARE REFERENCED TO COORDINATES PUBLISHED BY PALM BEACH COUNTY ENGINEERING DEPARTMENT AS DEPICTED HEREON.

SHEET 4 OF 7
SHEET 3 OF 7

P.O.B.
N.E. CORNER OF TRACT "A-1"
AS MODIFIED BY
SURVEYOR'S AFFIDAVIT
(O.R.B. 27423/243, P.B.C.R.)
N: 775858.361
E: 953865.880
FOUND 4" C.M. &
DISK "L.B. 6439"

