

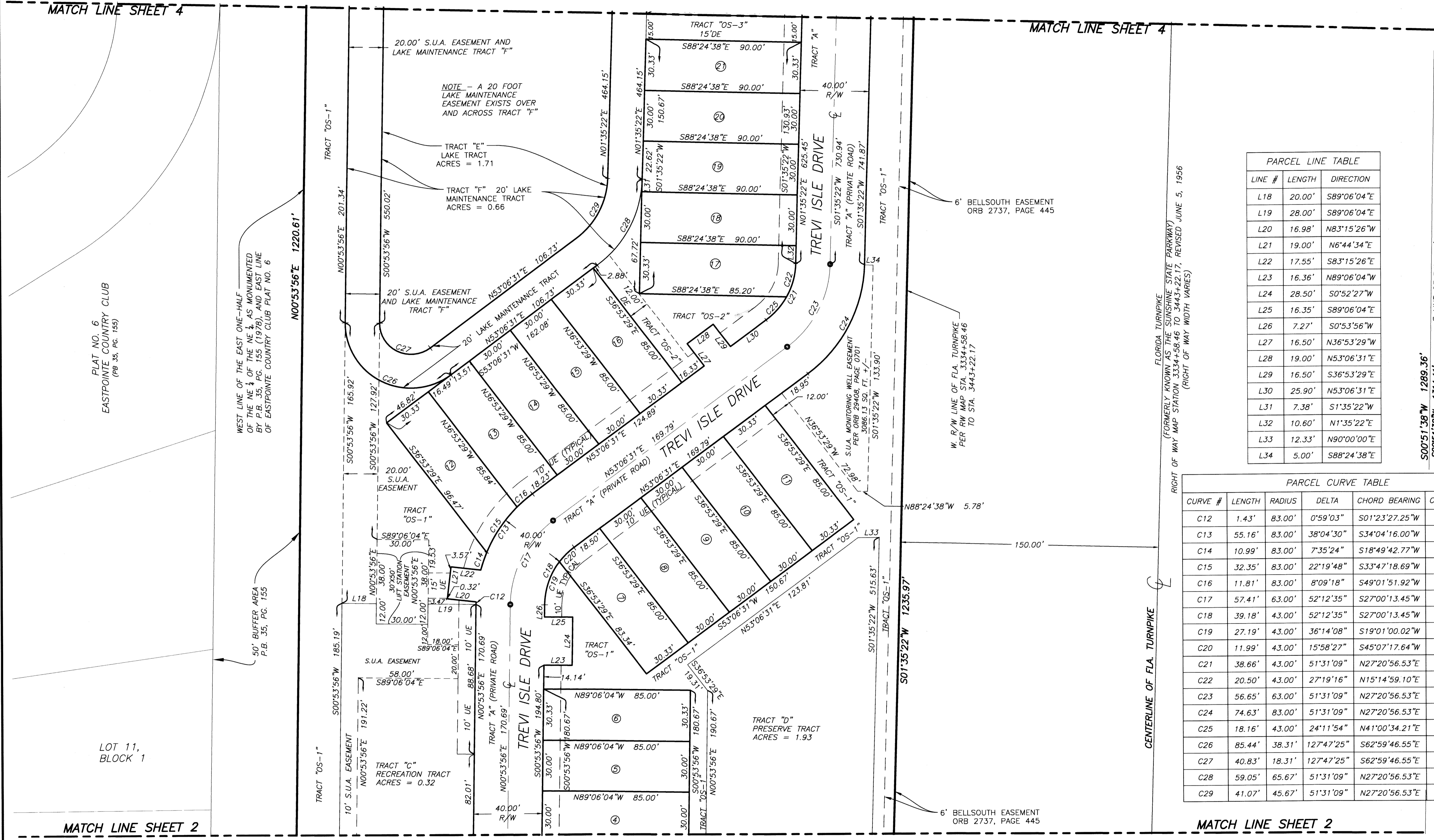
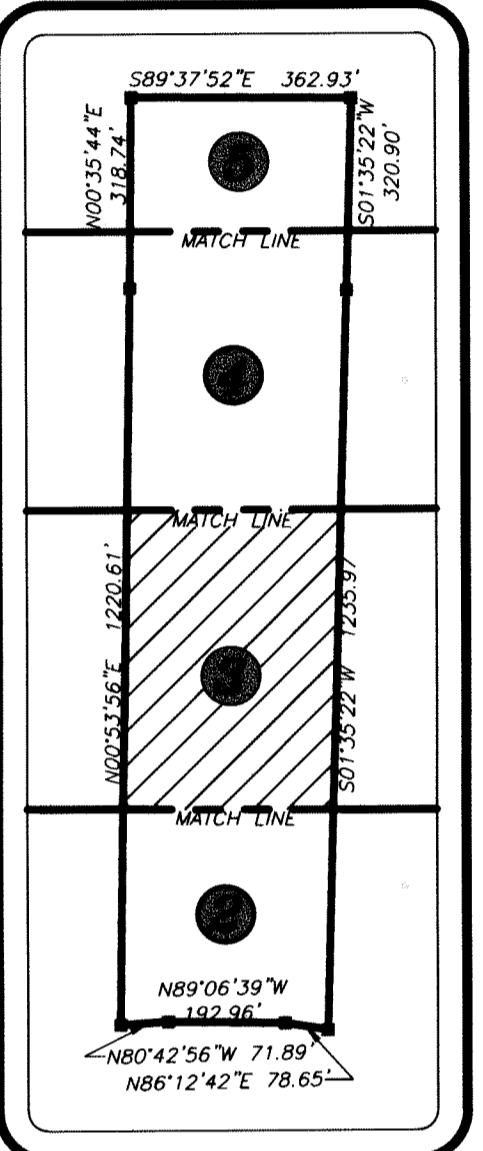
# TREVI ISLE

LOCATED IN SECTIONS 27 AND 34, TOWNSHIP 41 SOUTH, RANGE 42 EAST  
CITY OF PALM BEACH GARDENS, PALM BEACH COUNTY, FLORIDA.  
JANUARY 2018

# 90

State of Florida  
County of Palm Beach  
THIS PLAT HAS BEEN FILED FOR RECORD AT \_\_\_\_\_  
THIS \_\_\_\_\_ DAY OF \_\_\_\_\_  
A.D. 2018 AND DULY RECORDED  
IN PLAT BOOK \_\_\_\_\_ ON  
PAGES \_\_\_\_\_ THROUGH \_\_\_\_\_  
SHARON R. BOCK  
CLERK AND COMPTROLLER  
BY: \_\_\_\_\_  
DEPUTY CLERK

SHEET 3 OF 6 SHEETS



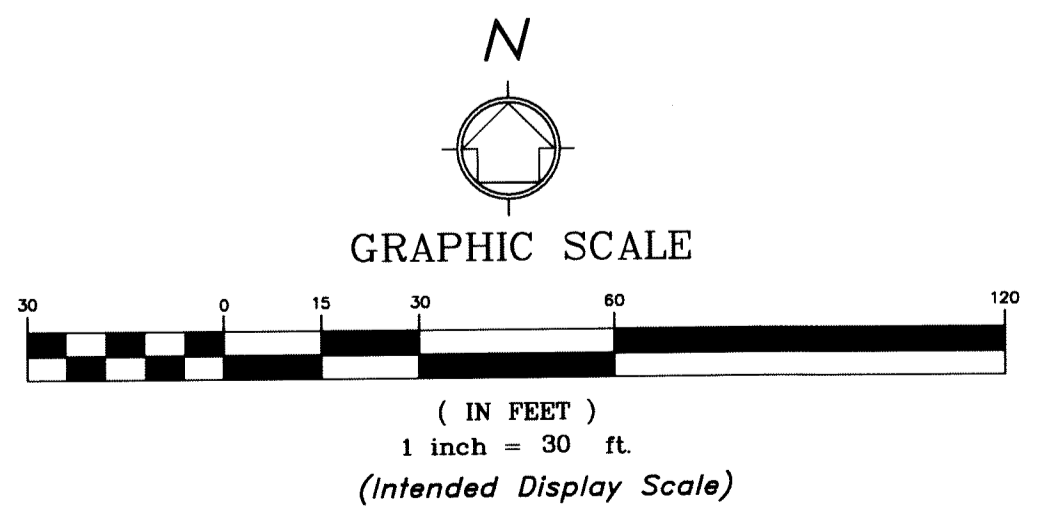
PARCEL LINE TABLE

LINE #	LENGTH	DIRECTION
L18	20.00'	S89°06'04"E
L19	28.00'	S89°06'04"E
L20	16.98'	N83°15'26"W
L21	19.00'	N6°44'34"E
L22	17.55'	S83°15'26"E
L23	16.36'	N89°06'04"W
L24	28.50'	S0°52'27"W
L25	16.35'	S89°06'04"E
L26	7.27'	S0°53'56"W
L27	16.50'	N36°53'29"W
L28	19.00'	N53°06'31"E
L29	16.50'	S36°53'29"E
L30	25.90'	N53°06'31"E
L31	7.38'	S1°35'22"W
L32	10.60'	N1°35'22"E
L33	12.33'	N90°00'00"E
L34	5.00'	S88°24'38"E

PARCEL CURVE TABLE

CURVE #	LENGTH	RADIUS	DELTA	CHORD BEARING	CHORD LENGTH
C12	1.43'	83.00'	0°59'03"	S01°23'27.25"W	1.43'
C13	55.16'	83.00'	38°04'30"	S34°04'16.00"W	54.15'
C14	10.99'	83.00'	7°35'24"	S18°49'42.77"W	10.99'
C15	32.35'	83.00'	22°19'48"	S33°47'18.69"W	32.14'
C16	11.81'	83.00'	8°09'18"	S49°01'51.92"W	11.80'
C17	57.41'	63.00'	52°12'35"	S27°00'13.45"W	55.44'
C18	39.18'	43.00'	52°12'35"	S27°00'13.45"W	37.84'
C19	27.19'	43.00'	36°14'08"	S19°01'00.02"W	26.74'
C20	11.99'	43.00'	15°58'27"	S45°07'17.64"W	11.95'
C21	38.66'	43.00'	51°31'09"	N27°20'56.53"E	37.38'
C22	20.50'	43.00'	27°19'16"	N15°14'59.10"E	20.31'
C23	56.65'	63.00'	51°31'09"	N27°20'56.53"E	54.76'
C24	74.63'	83.00'	51°31'09"	N27°20'56.53"E	72.14'
C25	18.16'	43.00'	24°11'54"	N41°00'34.21"E	18.03'
C26	85.44'	38.31'	127°47'25"	S62°59'46.55"E	68.80'
C27	40.83'	18.31'	127°47'25"	S62°59'46.55"E	32.88'
C28	59.05'	65.67'	51°31'09"	N27°20'56.53"E	57.08'
C29	41.07'	45.67'	51°31'09"	N27°20'56.53"E	39.70'

- LEGEND:**
- ⊙ = PERMANENT CONTROL POINT
  - ⊠ = 4"x4"x30" CONC. MON. W/ALUM. DISK STAMPED "P.R.M. LB 7055" UNLESS OTHERWISE NOTED
  - PB = PLAT BOOK
  - R = RADIUS
  - UE = UTILITY EASEMENT
  - L = LENGTH OF ARC
  - LB = LICENSED SURVEYING BUSINESS
  - Δ = DELTA (CENTRAL ANGLE)
  - DE = DRAINAGE EASEMENT
  - FP&L = Florida Power & Light
  - C.C.R. = CERTIFIED CORNER RECORD
  - CONC. = CONCRETE
  - FND. = FOUND
  - ORB = OFFICIAL RECORDS BOOK
  - R/W = RIGHT-OF-WAY
  - Pg. = PAGE
  - PBCR = PALM BEACH COUNTY RECORDS
  - w/ = WITH
  - PLS = PROFESSIONAL LAND SURVEYOR
  - PRM = PERMANENT REFERENCE MONUMENT
  - PSM = PROFESSIONAL SURVEYOR & MAPPER
  - S.U.A. = SEACOAST UTILITY AUTHORITY
  - (N/R) = NON-RADIAL POINT OF TANGENCY
  - (R) = RADIAL POINT OF TANGENCY
  - (P) = PERPENDICULAR
  - (5) = LOT NUMBER INSIDE OF CIRCLE
  - MON. = MONUMENT
  - COR. = CORNER
  - DB = DEED BOOK
  - L.A.E. = LIMITED ACCESS EASEMENT
  - MEAS. = MEASURED
  - P.O.B. = POINT OF BEGINNING
  - P.O.C. = POINT OF COMMENCEMENT
  - PBCo. = PALM BEACH COUNTY
  - RNG = RANGE
  - SEC. = SECTION
  - TWP = TOWNSHIP



NOTICE: This plat, as recorded in its graphic form, is the official depiction of the subdivided lands described herein and will in no circumstances be supplanted in authority by any other graphic or digital form of the plat. There may be additional restrictions that are not recorded on this plat that may be found in the Public Records of Palm Beach County.

**WGI**  
Wantman Group, Inc.  
Engineering ♦ Planning ♦ Surveying ♦ Environmental  
2035 VISTA PARKWAY, SUITE 100, WEST PALM BEACH, FL 33411  
(866) 909-2220 phone (561) 687-1110 fax  
CERTIFICATE OF AUTHORIZATION No. LB 7055  
ORLANDO - PORT ST. LUCIE - TAMPA  
THIS INSTRUMENT WAS PREPARED BY KEVIN RANDOLPH, P.S.M.  
PROFESSIONAL SURVEYOR AND MAPPER, LICENSE NO. 7128  
FOR THE FIRM: WANTMAN GROUP, INC.