

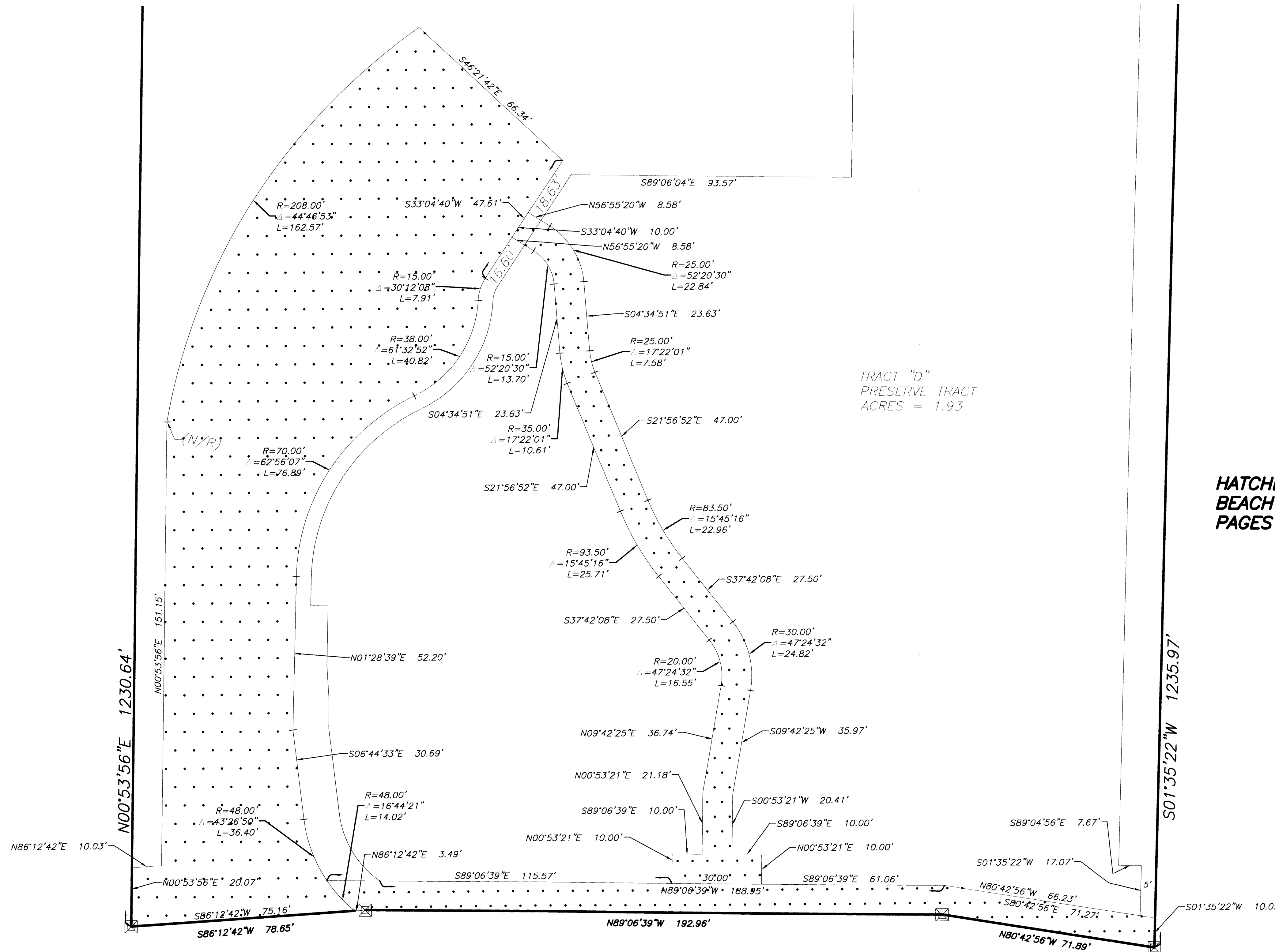
TREVI ISLE

LOCATED IN SECTIONS 27 AND 34, TOWNSHIP 41 SOUTH, RANGE 42 EAST
CITY OF PALM BEACH GARDENS, PALM BEACH COUNTY, FLORIDA.
JANUARY 2018

93

State of Florida
County of Palm Beach
THIS PLAT HAS BEEN FILED FOR
RECORD AT _____
THIS _____ DAY OF _____
A.D. 2018 AND DULY RECORDED
IN PLAT BOOK _____ ON
PAGES _____ THROUGH _____
SHARON R. BOCK
CLERK AND COMPTROLLER
BY: _____
DEPUTY CLERK

SHEET 6 OF 6 SHEETS

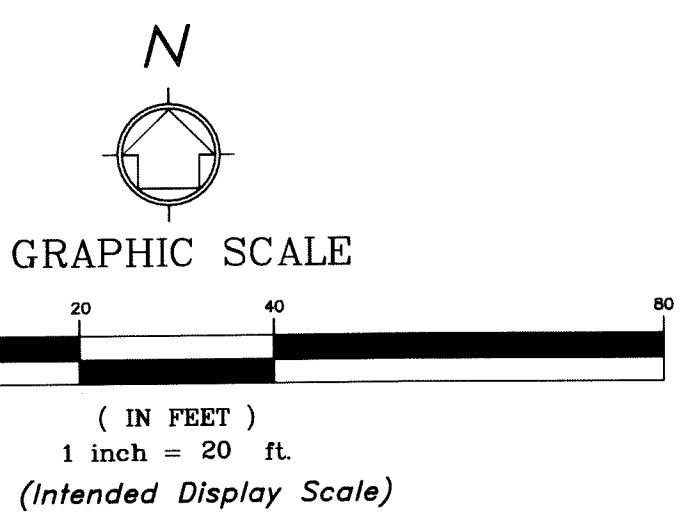


TRACT "D"
PRESERVE TRACT
ACRES = 1.93

**HATCHED AREA = ACCESS EASEMENT TO PALM
BEACH COUNTY, RECORDED AT ORB. 28514,
PAGES 503-511**

LEGEND:

- | | | |
|---|--------------------------------------|----------------------------------|
| ⊙ = PERMANENT CONTROL POINT | FND. = FOUND | COR. = CORNER |
| ⊠ = 4"x4"x30" CONC. MON. W/ALUM. DISK
STAMPED "P.R.M. LB 7055"
UNLESS OTHERWISE NOTED | ORB = OFFICIAL RECORDS BOOK | DB = DEED BOOK |
| PB = PLAT BOOK | R/W = RIGHT-OF-WAY | L.A.E. = LIMITED ACCESS EASEMENT |
| R = RADIUS | Pg. = PAGE | MEAS. = MEASURED |
| UE = UTILITY EASEMENT | PBCR = PALM BEACH COUNTY RECORDS | P.O.B. = POINT OF BEGINNING |
| L = LENGTH OF ARC | w/ = WITH | P.O.C. = POINT OF COMMENCEMENT |
| LB = LICENSED SURVEYING BUSINESS | PLS = PROFESSIONAL LAND SURVEYOR | PBCo. = PALM BEACH COUNTY |
| Δ = DELTA (CENTRAL ANGLE) | PRM = PERMANENT REFERENCE MONUMENT | RNG = RANGE |
| DE = DRAINAGE EASEMENT | PSM = PROFESSIONAL SURVEYOR & MAPPER | SEC. = SECTION |
| FP&L = Florida Power & Light | S.U.A. = SEACOAST UTILITY AUTHORITY | TWP = TOWNSHIP |
| C.C.R. = CERTIFIED CORNER RECORD | (N/R) = NON-RADIAL POINT OF TANGENCY | |
| CONC. = CONCRETE | (R) = RADIAL POINT OF TANGENCY | |
| | (P) = PERPENDICULAR | |
| | Ⓢ = LOT NUMBER INSIDE OF CIRCLE | |
| | MON. = MONUMENT | |



NOTICE: This plat, as recorded in its graphic form, is the official depiction of the subdivided lands described herein and will in no circumstances be supplanted in authority by any other graphic or digital form of the plat. There may be additional restrictions that are not recorded on this plat that may be found in the Public Records of Palm Beach County.

WGI

Wantman Group, Inc.

Engineering ♦ Planning ♦ Surveying ♦ Environmental
2035 VISTA PARKWAY, SUITE 100, WEST PALM BEACH, FL 33411
(888) 909-2220 phone (561) 687-1110 fax
CERTIFICATE OF AUTHORIZATION No. LB 7055
ORLANDO - PORT ST. LUCIE - TAMPA
THIS INSTRUMENT WAS PREPARED BY KEVIN RANDOLPH, P.S.M.
PROFESSIONAL SURVEYOR AND MAPPER, LICENSE NO. 7128
FOR THE FIRM: WANTMAN GROUP, INC.