

TIRE KINGDOM 971

A PORTION OF THE SOUTHWEST ONE-QUARTER OF SECTION 18, TOWNSHIP 42 SOUTH, RANGE 43 EAST, PALM BEACH COUNTY, FLORIDA

THIS INSTRUMENT PREPARED BY
DAVID P. LINDLEY
OF
CAULFIELD and WHEELER, INC.
SURVEYORS - ENGINEERS - PLANNERS
7900 GLADES ROAD, SUITE 100
BOCA RATON, FLORIDA 33434 - (561)392-1991
CERTIFICATE OF AUTHORIZATION NO. LB3591

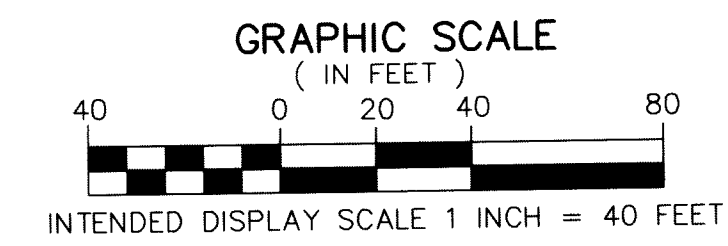
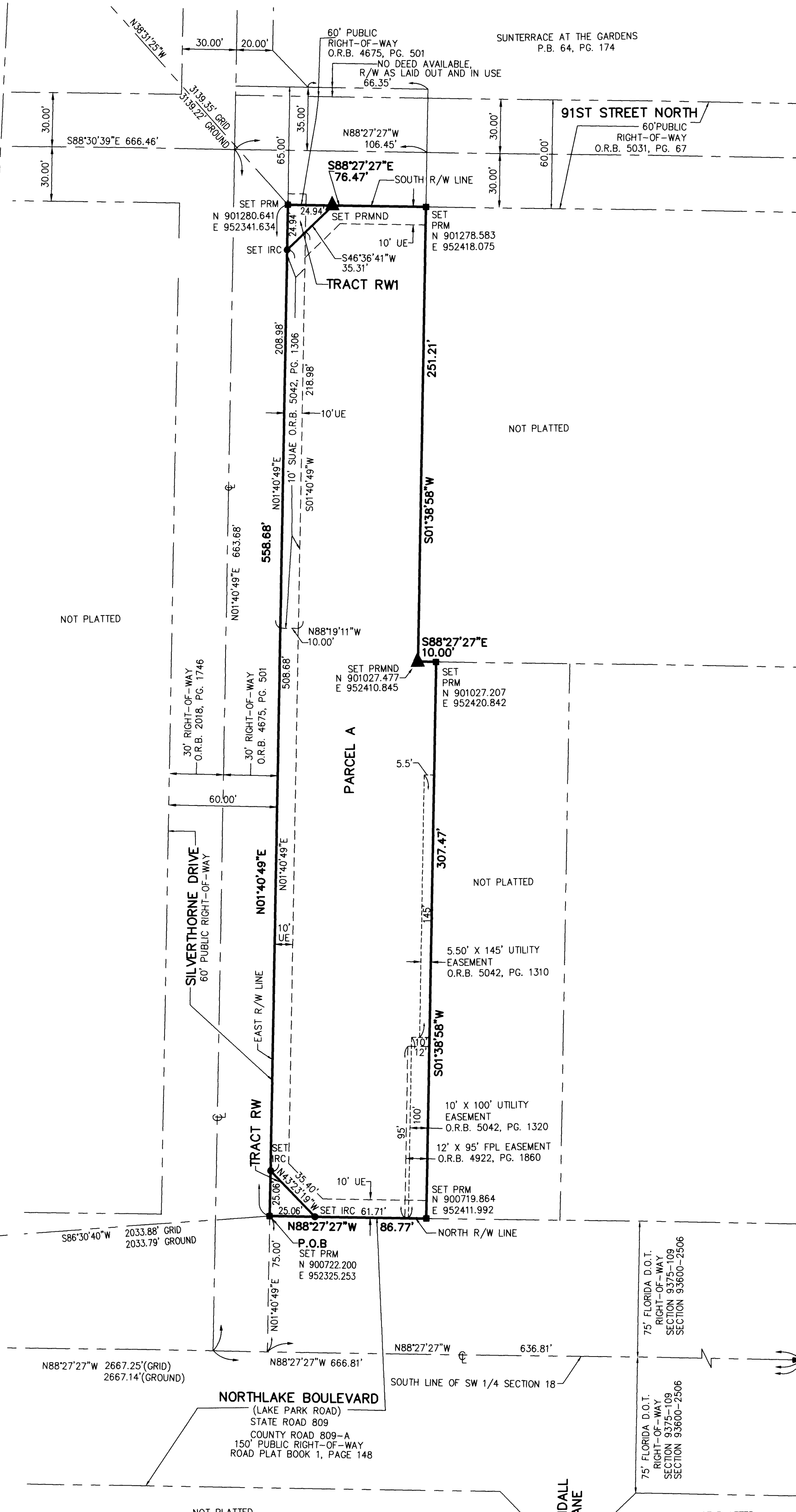
103

SHEET 2 OF 2

CONTROL POINT
"DODGE DART"
N: 903736.717
E: 950386.334
FOUND
P.K. NAIL & WASHER

CONTROL POINT
"1-95 LAKE PARK"
N: 900598.427
E: 950295.142
FOUND
PALM BEACH COUNTY
BRASS DISK IN
CONCRETE MONUMENT
STAMPED "1-95 LAKE PARK"

SOUTHWEST CORNER
SECTION 18
CORNER NOT FOUND.
POSITION CALCULATED
FROM PUBLISHED
PALM BEACH COUNTY
SURVEY SECTION
INFORMATION
N: 900701.888
E: 950293.353



LEGEND/ABBREVIATIONS

- ☐ - CENTERLINE
- D.O.T. - DEPARTMENT OF TRANSPORTATION
- E - EASTING (WHEN USED WITH COORDINATES)
- FPL - FLORIDA POWER & LIGHT
- IRC - 1/8" X 1/2" IRON ROD WITH CAP "C&W LB3591"
- LB - LICENSED BUSINESS
- N - NORTHING (WHEN USED WITH COORDINATES)
- O.R.B. - OFFICIAL RECORD BOOK
- P.B. - PLAT BOOK
- PG. - PAGE
- P.K. - PARKER KALON
- P.O.B. - POINT OF BEGINNING
- P.O.C. - POINT OF COMMENCEMENT
- R/W - RIGHT-OF-WAY
- SJAE - SEACOAST UTILITY AUTHORITY EASEMENT
- UE - UTILITY EASEMENT
- PRM - DENOTES PERMANENT REFERENCE MONUMENT
4" x 4" x 24" CONCRETE MONUMENT WITH
ALUMINUM DISK STAMPED "C&W PRM LB3591"
- △ - PALM BEACH COUNTY CONTROL POINT
- ▲ PRMND - DENOTES PERMANENT REFERENCE MONUMENT
SET NAIL AND DISK STAMPED "PRM" LB 3591

NOTES COORDINATES, BEARINGS AND DISTANCES

COORDINATES SHOWN ARE GRID
DATUM = NAD 83 (90/98 ADJUSTMENT)
ZONE = FLORIDA EAST
LINEAR UNIT = US SURVEY FEET
COORDINATE SYSTEM 1983 STATE PLANE
TRANSVERSE MERCATOR PROJECTION
ALL DISTANCES ARE GROUND
SCALE FACTOR = 1.00004217
GROUND DISTANCE X SCALE FACTOR = GRID DISTANCE
BEARINGS AS SHOWN HEREON ARE GRID DATUM,
NAD 83 (90/98 ADJUSTMENT), FLORIDA EAST ZONE.