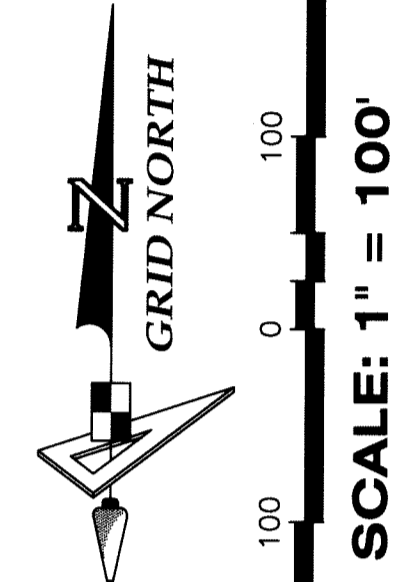
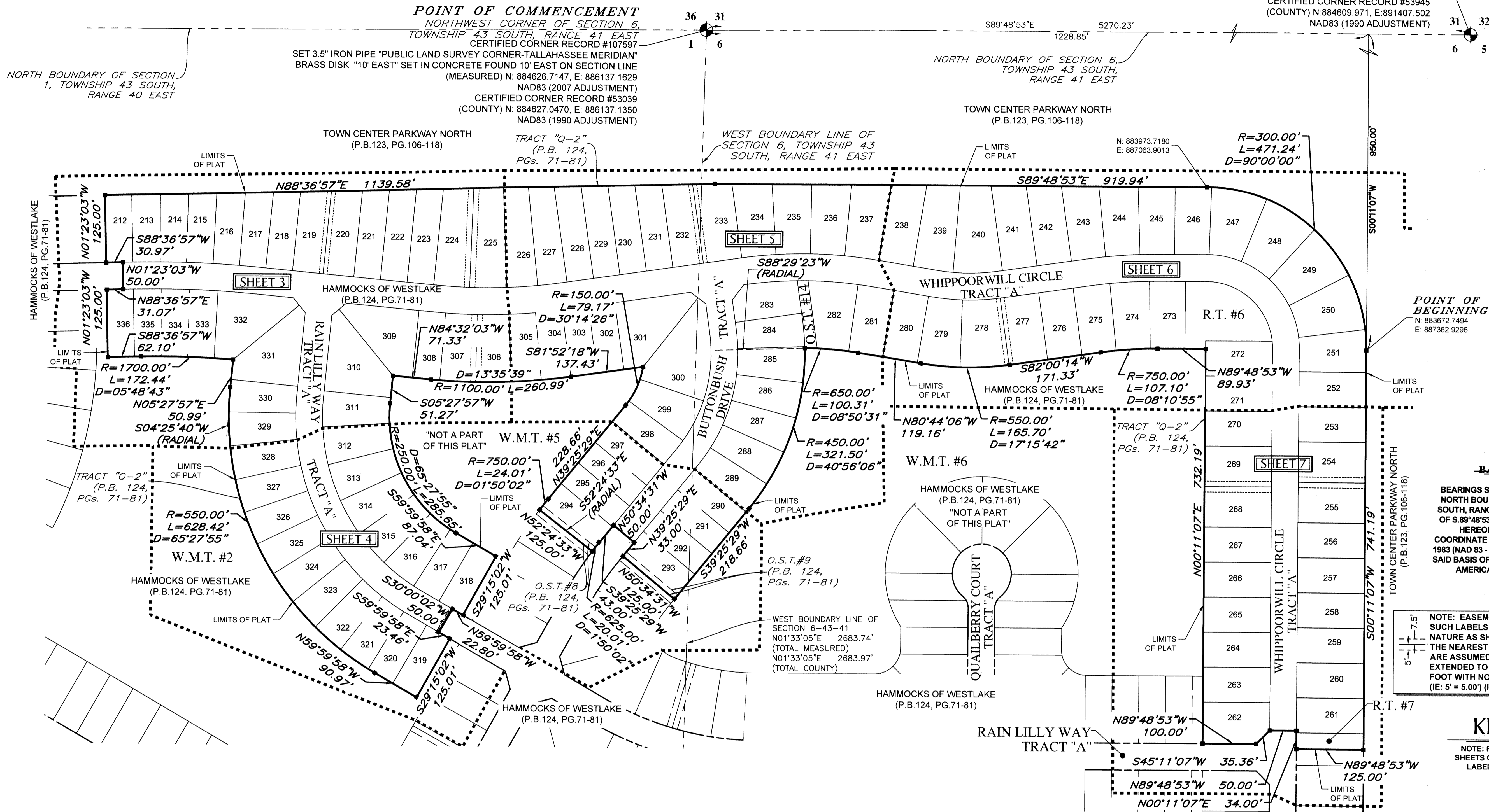


HAMMOCKS OF WESTLAKE - PHASE II

BEING A REPLAT OF TRACTS "Q-2", O.S.T. #8 AND O.S.T. #9 OF HAMMOCKS OF WESTLAKE PER PLAT BOOK 124, PAGES 71-81, BEING A PORTION OF SECTION 6, TOWNSHIP 43 SOUTH, RANGE 41 EAST, AND A PORTION OF SECTION 1, TOWNSHIP 43 SOUTH, RANGE 40 EAST, CITY OF WESTLAKE, PALM BEACH COUNTY, FLORIDA

NORTHEAST CORNER OF SECTION 6, TOWNSHIP 43 SOUTH, RANGE 41 EAST
 CERTIFIED CORNER RECORD #107591
 FOUND BRASS DISK IN CONCRETE "P.B.C."
 (MEASURED) N: 884609.6818, E: 891407.3638
 NAD83 (2007 ADJUSTMENT)
 CERTIFIED CORNER RECORD #53945
 (COUNTY) N: 884609.971, E: 891407.502
 NAD83 (1990 ADJUSTMENT)

154



POINT OF BEGINNING
 N: 883672.7494
 E: 887362.9296

BASIS OF BEARINGS
 BEARINGS SHOWN HEREON ARE BASED ON THE NORTH BOUNDARY OF SECTION 6, TOWNSHIP 43 SOUTH, RANGE 41 EAST, HAVING A GRID BEARING OF S.89°48'53"E. (MEASURED). BEARINGS SHOWN HEREON, REFER TO THE STATE PLANE COORDINATE SYSTEM, NORTH AMERICA DATUM OF 1983 (NAD 83 - '07) FOR THE EAST ZONE OF FLORIDA. SAID BASIS OF BEARING IS THE SAME IN THE NORTH AMERICAN DATUM OF 1983 (NAD 83 - '90).

NOTE: EASEMENTS, BUFFERS AND OTHER SUCH LABELS AND DIMENSIONS OF A PARALLEL NATURE AS SHOWN HEREON AND INDICATED TO THE NEAREST FOOT (IE: 5' UTILITY EASEMENT) ARE ASSUMED TO BE THE SAME DIMENSION EXTENDED TO THE NEAREST HUNDRETH OF A FOOT WITH NO GREATER OR LESSER VALUE (IE: 5' = 5.00') (IE: 7.5' = 7.50')

KEY SHEET

NOTE: REFER TO THE FOLLOWING SHEETS OF THIS PLAT FOR DETAILED LABELING AND DIMENSIONING.

- LEGEND:**
- --- Indicates (P.R.M.) Permanent Reference Monument - 4"x4" Concrete Monument LB7768, unless otherwise noted.
 - --- Indicates (P.R.M.) Offset Permanent Reference Monument - 4"x4" Concrete Monument LB7768, unless otherwise noted.
 - --- Indicates (P.C.P.) Permanent Control Point LB7768
 - P.B.C. --- Palm Beach County
 - P.B. --- Plat Book
 - FCM --- Found Concrete Monument
 - O.R. --- Official Records Book
 - (TYP) --- Typical
 - (RB) --- Radial Bearing
 - (NR) --- Non-Radial line
 - (PR) --- Private Road
 - (U.E.) --- Utility Easement
 - (D.E.) --- Drainage Easement
 - C --- Curve
 - L --- Line
 - B.T. --- Buffer Tract
 - O.S.T. --- Open Space Tract
 - W.M.T. --- Water Management Tract
 - L.M.E. --- Lake Maintenance Easement
 - L.M.A.E. --- Lake Maintenance Access Easement
 - L.A.E. --- Limited Access Easement
 - PG. --- Page
 - R.T. --- Recreation Tract
 - S.I.D. --- Seminole Improvement District
 - NAD --- North American Datum
 - LB --- Licensed Business
 - P.S.M. --- Professional Surveyor and Mapper
 - 1/4 --- One Quarter
 - R --- Radius
 - L --- Arc Length
 - D --- Delta-Central Angle
 - C --- Chord Length
 - CB --- Chord Bearing

NOTICE:
 THIS PLAT, AS RECORDED IN ITS GRAPHIC FORM, IS THE OFFICIAL DEPICTION OF THE SUBDIVIDED LANDS DESCRIBED HEREIN AND WILL IN NO CIRCUMSTANCES BE SUPPLANTED IN AUTHORITY BY ANY OTHER GRAPHIC OR DIGITAL FORM OF THE PLAT. THERE MAY BE ADDITIONAL RESTRICTIONS THAT ARE NOT RECORDED ON THIS PLAT THAT MAY BE FOUND IN THE PUBLIC RECORDS OF THIS COUNTY.

COORDINATES SHOWN HEREON ARE FLORIDA STATE PLANE GRID DATUM = NAD83 2007 ADJUSTMENT
 ZONE = FLORIDA EAST
 LINEAR UNITS = US SURVEY FEET
 COORDINATE SYSTEM = 1983 STATE PLANE
 PROJECTION = TRANSVERSE MERCATOR
 ALL DISTANCES ARE GROUND
 SCALE FACTOR: 1.0000
 GROUND DISTANCE X SCALE FACTOR = GRID DISTANCE
 PLAT BEARING = GRID BEARING
 NO ROTATION
 ALL TIES TO SECTION CORNERS AND QUARTER CORNERS ARE GENERATED FROM MEASURED VALUES

- NOTES:**
- THIS PARCEL CONTAINS 29.000 ACRES, MORE OR LESS.
 - ALL LINES THAT INTERSECT A CURVE THAT ARE NOT LABELED NON-RADIAL (NR) ARE RADIAL.



4152 W. Blue Heron Blvd. Phone: (561) 444-2720
 Suite 105 www.geopointsurvey.com
 Riviera Beach, FL 33404 Licensed Business Number LB 7768