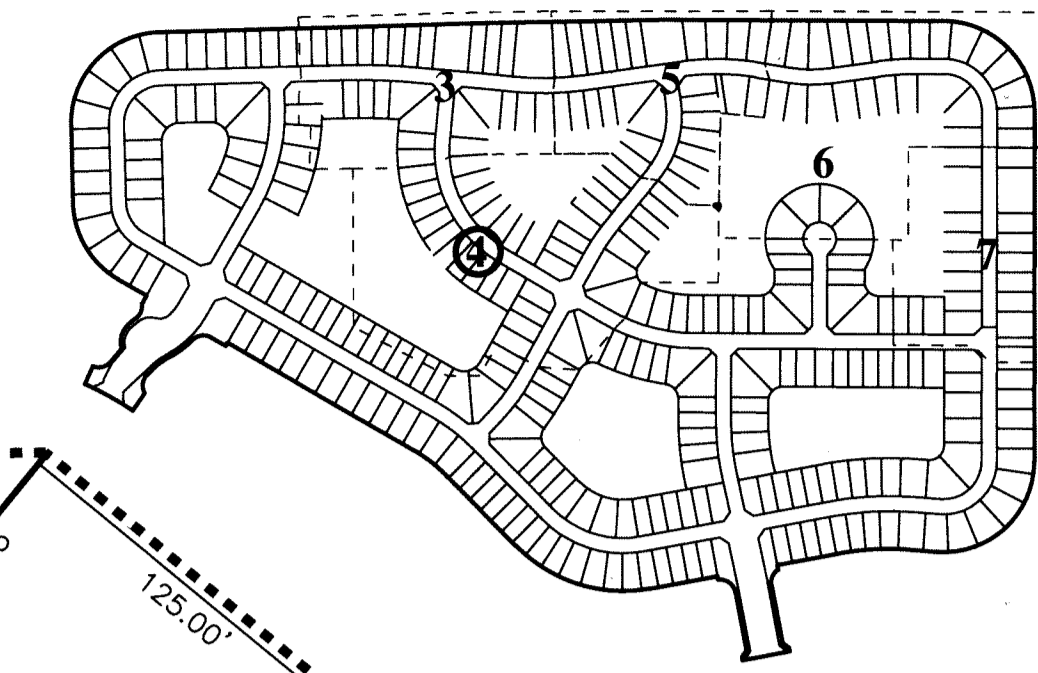


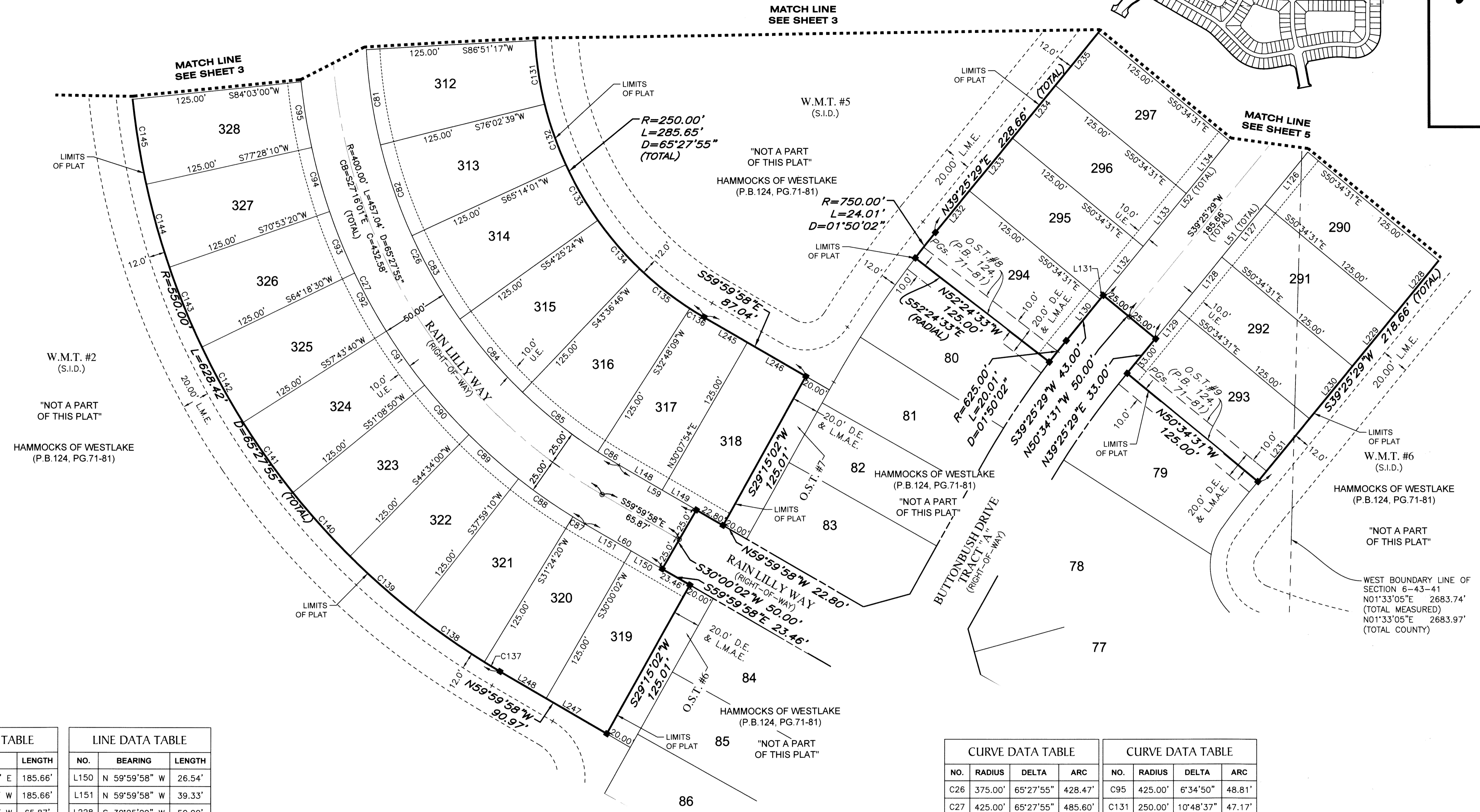
HAMMOCKS OF WESTLAKE - PHASE II

BEING A REPLAT OF TRACTS "Q-2", O.S.T. #8 AND O.S.T. #9 OF HAMMOCKS OF WESTLAKE PER PLAT BOOK 124, PAGES 71-81, BEING A PORTION OF SECTION 6, TOWNSHIP 43 SOUTH, RANGE 41 EAST, AND A PORTION OF SECTION 1, TOWNSHIP 43 SOUTH, RANGE 40 EAST, CITY OF WESTLAKE, PALM BEACH COUNTY, FLORIDA

SHEET MAP
(NOT TO SCALE)



156



LINE DATA TABLE		
NO.	BEARING	LENGTH
L51	N 39°25'29" E	185.66'
L52	S 39°25'29" W	185.66'
L59	N 59°59'58" W	65.87'
L60	N 59°59'58" W	65.87'
L126	N 39°25'29" E	50.00'
L127	N 39°25'29" E	50.00'
L128	N 39°25'29" E	50.00'
L129	N 39°25'29" E	27.00'
L130	S 39°25'29" W	39.35'
L131	S 39°25'29" W	3.65'
L132	S 39°25'29" W	46.36'
L133	S 39°25'29" W	50.00'
L134	S 39°25'29" W	50.00'
L148	N 59°59'58" W	36.79'
L149	N 59°59'58" W	29.09'

LINE DATA TABLE		
NO.	BEARING	LENGTH
L150	N 59°59'58" W	26.54'
L151	N 59°59'58" W	39.33'
L228	S 39°25'29" W	50.00'
L229	S 39°25'29" W	50.00'
L230	S 39°25'29" W	50.00'
L231	S 39°25'29" W	60.00'
L232	N 39°25'29" E	39.35'
L233	N 39°25'29" E	50.00'
L234	N 39°25'29" E	50.00'
L235	N 39°25'29" E	50.00'
L245	S 60°00'00" E	37.08'
L246	S 60°00'00" E	49.97'
L247	N 59°59'58" W	51.64'
L248	N 59°59'58" W	39.33'

- LEGEND:**
- --- Indicates (P.R.M.) Permanent Reference Monument - 4"x4" Concrete Monument LB7768, unless otherwise noted.
 - --- Indicates (P.R.M.) Offset Permanent Reference Monument - 4"x4" Concrete Monument LB7768, unless otherwise noted.
 - ⊙ --- Indicates (P.C.P.) Permanent Control Point LB7768
 - P.B.C. --- Palm Beach County
 - P.B. --- Plat Book
 - FCM --- Found Concrete Monument
 - O.R. --- Official Records Book
 - (TYP) --- Typical
 - (RB) --- Radial Bearing
 - (NR) --- Non-Radial line
 - (PR) --- Private Road
 - (U.E.) --- Utility Easement
 - (D.E.) --- Drainage Easement
 - S.I.D. --- Seminole Improvement District
 - C --- Curve
 - L --- Line
 - B.T. --- Buffer Tract
 - O.S.T. --- Open Space Tract
 - W.M.T. --- Water Management Tract
 - L.M.E. --- Lake Maintenance Easement
 - L.M.A.E. --- Lake Maintenance Access Easement
 - L.A.E. --- Limited Access Easement
 - PG. --- Page
 - R.T. --- Recreation Tract
 - S.I.D. --- Seminole Improvement District
 - NAD --- North American Datum
 - LB --- Licensed Business
 - P.S.M. --- Professional Surveyor and Mapper
 - 1/4 --- One Quarter
 - R --- Radius
 - L --- Arc Length
 - D --- Delta-Central Angle
 - C --- Chord Length
 - CB --- Chord Bearing

CURVE DATA TABLE			
NO.	RADIUS	DELTA	ARC
C26	375.00'	65°27'55"	428.47'
C27	425.00'	65°27'55"	485.60'
C81	375.00'	10°48'38"	70.75'
C82	375.00'	10°48'38"	70.75'
C83	375.00'	10°48'38"	70.75'
C84	375.00'	10°48'38"	70.75'
C85	375.00'	10°48'38"	70.75'
C86	375.00'	2°48'07"	18.35'
C87	425.00'	1°24'18"	10.43'
C88	425.00'	6°34'50"	48.81'
C89	425.00'	6°34'50"	48.81'
C90	425.00'	6°34'50"	48.81'
C91	425.00'	6°34'50"	48.81'
C92	425.00'	6°34'50"	48.81'
C93	425.00'	6°34'50"	48.81'
C94	425.00'	6°34'50"	48.81'

CURVE DATA TABLE			
NO.	RADIUS	DELTA	ARC
C95	425.00'	6°34'50"	48.81'
C131	250.00'	10°48'37"	47.17'
C132	250.00'	10°48'37"	47.17'
C133	250.00'	10°48'37"	47.17'
C134	250.00'	10°48'37"	47.17'
C135	250.00'	10°48'37"	47.17'
C136	250.00'	2°48'05"	12.22'
C137	550.00'	1°24'18"	13.48'
C138	550.00'	6°34'50"	63.17'
C139	550.00'	6°34'50"	63.17'
C140	550.00'	6°34'50"	63.17'
C141	550.00'	6°34'50"	63.17'
C142	550.00'	6°34'50"	63.17'
C143	550.00'	6°34'50"	63.17'
C144	550.00'	6°34'50"	63.17'
C145	550.00'	6°34'50"	63.17'

4152 W. Blue Heron Blvd. Phone: (561) 444-2720
Suite 105 www.geopointsurvey.com
Riviera Beach, FL 33404 Licensed Business Number LB 7768

SHEET 4 OF 7 SHEETS

DRAWN: WVESTLAKEWESTLAKE-NAD08PLATSHAMMOCKS OF WESTLAKE - PLOT BY: SERGIO MACHADO - ON: 2/16/2016 10:45 AM PLOTTED BY: SERGIO MACHADO - ON: 2/16/2016 10:45 AM LAST SAVED BY: LUIS ON: 1/19/2016 9:54 AM