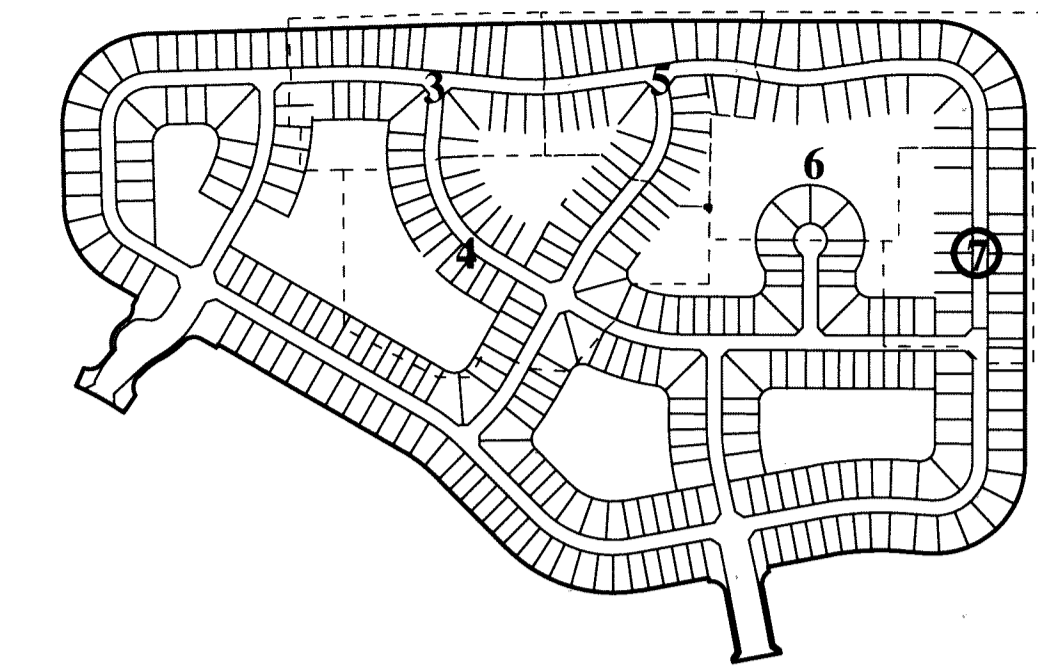


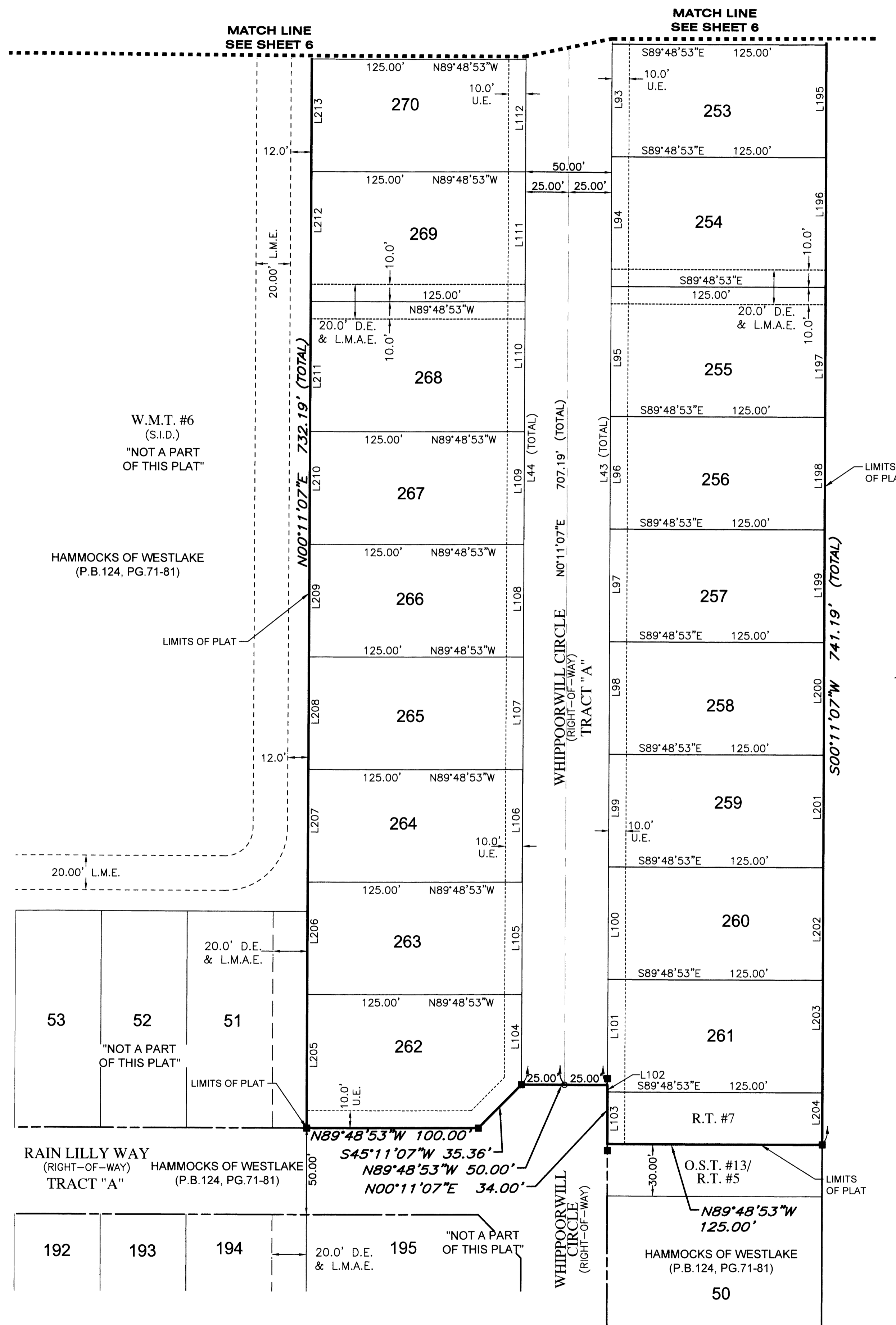
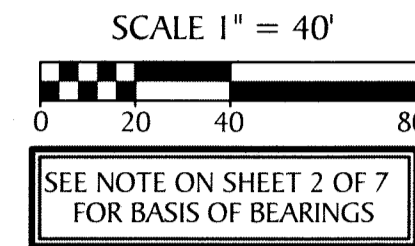
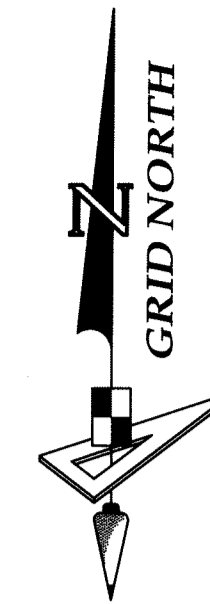
HAMMOCKS OF WESTLAKE - PHASE II

BEING A REPLAT OF TRACTS "Q-2", O.S.T. #8 AND O.S.T. #9 OF HAMMOCKS OF WESTLAKE PER PLAT BOOK 124, PAGES 71-81, BEING A PORTION OF SECTION 6, TOWNSHIP 43 SOUTH, RANGE 41 EAST, AND A PORTION OF SECTION 1, TOWNSHIP 43 SOUTH, RANGE 40 EAST, CITY OF WESTLAKE, PALM BEACH COUNTY, FLORIDA

SHEET MAP
(NOT TO SCALE)



159



LINE DATA TABLE		
NO.	BEARING	LENGTH
L43	N 00°11'07" E	707.19'
L44	N 00°11'07" E	707.19'
L93	N 00°11'07" E	65.00'
L94	N 00°11'07" E	75.00'
L95	N 00°11'07" E	75.00'
L96	N 00°11'07" E	65.00'
L97	N 00°11'07" E	65.00'
L98	N 00°11'07" E	65.00'
L99	N 00°11'07" E	65.00'
L100	N 00°11'07" E	65.00'
L101	N 00°11'07" E	61.11'
L102	N 00°11'07" E	3.89'
L103	N 00°11'07" E	30.11'
L104	N 00°11'07" E	52.00'

LINE DATA TABLE		
NO.	BEARING	LENGTH
L105	N 00°11'07" E	65.00'
L106	N 00°11'07" E	65.00'
L107	N 00°11'07" E	65.00'
L108	N 00°11'07" E	65.00'
L109	N 00°11'07" E	65.00'
L110	N 00°11'07" E	75.00'
L111	N 00°11'07" E	75.00'
L112	N 00°11'07" E	65.00'
L195	S 00°11'07" W	65.00'
L196	S 00°11'07" W	75.00'
L197	S 00°11'07" W	75.00'
L198	S 00°11'07" W	65.00'
L199	S 00°11'07" W	65.00'
L200	S 00°11'07" W	65.00'

LINE DATA TABLE		
NO.	BEARING	LENGTH
L201	S 00°11'07" W	65.00'
L202	S 00°11'07" W	65.00'
L203	S 00°11'07" W	65.00'
L204	S 00°11'07" W	30.11'
L205	N 00°11'07" E	76.99'
L206	N 00°11'07" E	65.00'
L207	N 00°11'07" E	65.00'
L208	N 00°11'07" E	65.00'
L209	N 00°11'07" E	65.00'
L210	N 00°11'07" E	65.00'
L211	N 00°11'07" E	75.00'
L212	N 00°11'07" E	75.00'
L213	N 00°11'07" E	65.00'

- LEGEND:**
- --- Indicates (P.R.M.) Permanent Reference Monument - 4"x4" Concrete Monument LB7768, unless otherwise noted.
 - ⊕ --- Indicates (P.R.M.) Offset Permanent Reference Monument - 4"x4" Concrete Monument LB7768, unless otherwise noted.
 - ⊙ --- Indicates (P.C.P.) Permanent Control Point LB7768
 - P.B.C. --- Palm Beach County
 - P.B. --- Plat Book
 - FCM --- Found Concrete Monument
 - O.R. --- Official Records Book
 - (TYP) --- Typical
 - (RB) --- Radial Bearing
 - (NR) --- Non-Radial line
 - (PR) --- Private Road
 - (U.E.) --- Utility Easement
 - (D.E.) --- Drainage Easement
 - C --- Curve
 - L --- Line
 - B.T. --- Buffer Tract
 - O.S.T. --- Open Space Tract
 - W.M.T. --- Water Management Tract
 - L.M.E. --- Lake Maintenance Easement
 - L.M.A.E. --- Lake Maintenance Access Easement
 - L.A.E. --- Limited Access Easement
 - PG. --- Page
 - R.T. --- Recreation Tract
 - S.I.D. --- Seminole Improvement District
 - NAD --- North American Datum
 - LB --- Licensed Business
 - P.S.M. --- Professional Surveyor and Mapper
 - 1/4 --- One Quarter
 - R --- Radius
 - L --- Arc Length
 - D --- Delta-Central Angle
 - C --- Chord Length
 - CB --- Chord Bearing

GeoPoint
Surveying, Inc.

4152 W. Blue Heron Blvd. Phone: (561) 444-2720
Suite 103 www.geopointsurvey.com
Riviera Beach, FL 33404 Licensed Business Number LB 7768

SHEET 7 OF 7 SHEETS

D:\NAME: WESTLAKE\WESTLAKE - NAVD83\PLAT\HAMMOCKS OF WESTLAKE - PHASE II\PLAT\01-11-18.DWG PLOTTED BY: SERGIO MACHADO ON: 2/19/2018 10:48 AM LAST SAVED BY: LUISO ON: 1/19/2018 9:54 AM