

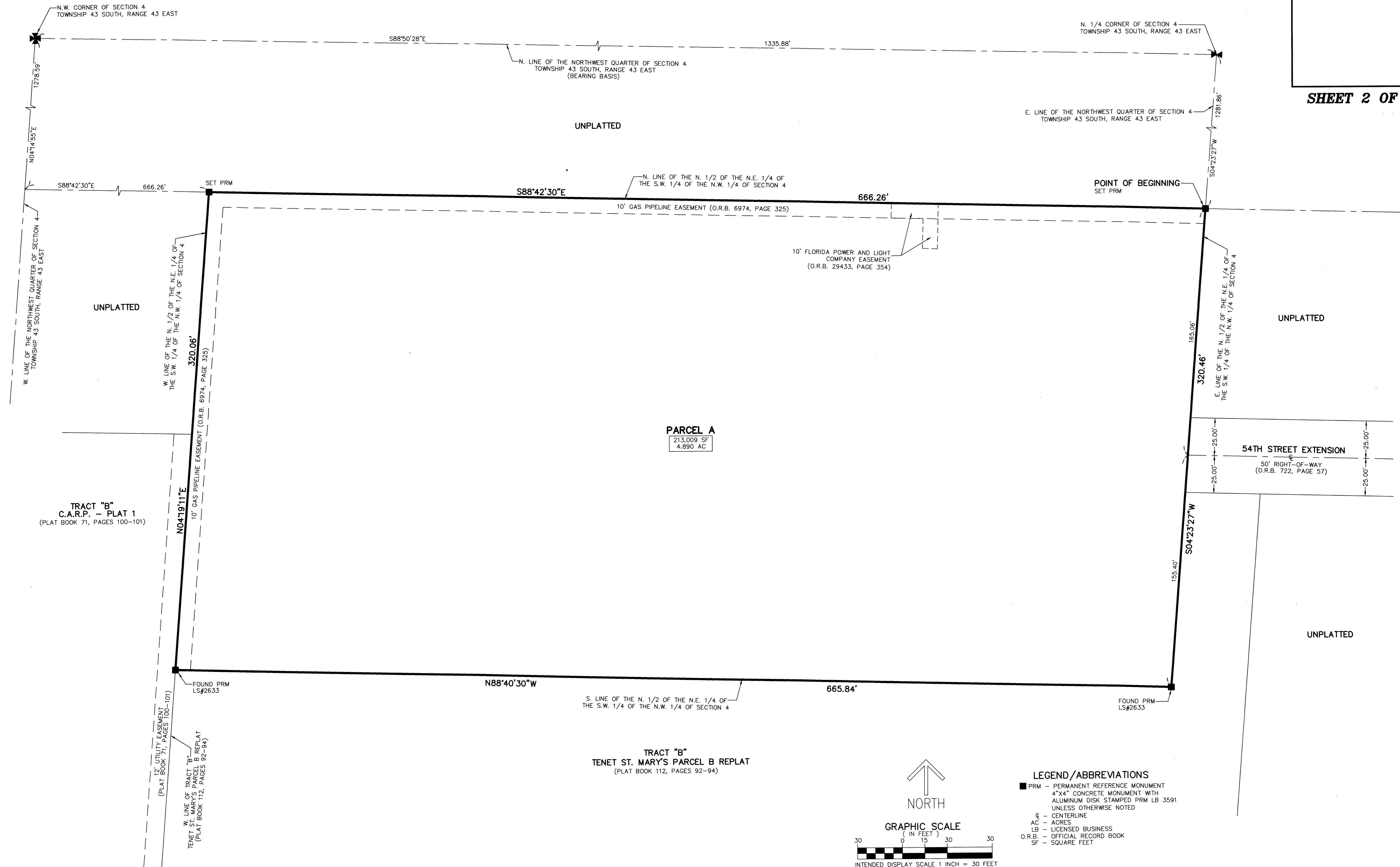
165

SHEET 2 OF 2

THIS INSTRUMENT PREPARED BY  
DAVID P. LINDLEY  
OF  
**CAULFIELD and WHEELER, INC.**  
SURVEYORS - ENGINEERS - PLANNERS  
7900 GLADES ROAD, SUITE 100  
BOCA RATON, FLORIDA 33434 - (561)392-1991  
CERTIFICATE OF AUTHORIZATION NO. LB3591

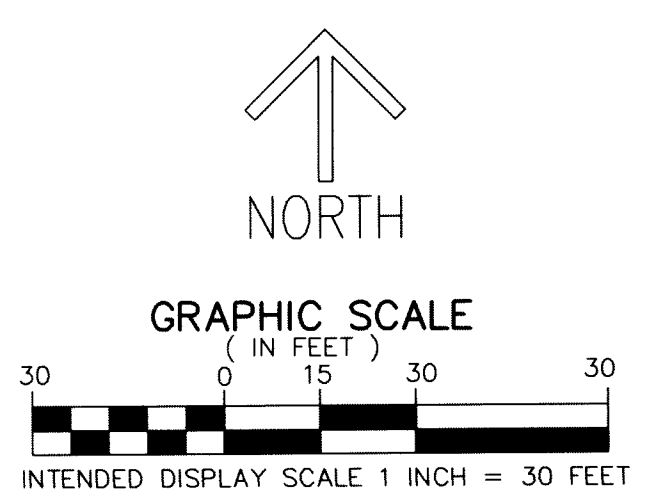
# NOVUS MEDICAL

BEING A PORTION OF THE NORTHWEST QUARTER OF SECTION 4, TOWNSHIP 43 SOUTH, RANGE 43 EAST,  
CITY OF WEST PALM BEACH, PALM BEACH COUNTY, FLORIDA



**LEGEND/ABBREVIATIONS**

- PRM - PERMANENT REFERENCE MONUMENT  
4"x4" CONCRETE MONUMENT WITH  
ALUMINUM DISK STAMPED PRM LB 3591  
UNLESS OTHERWISE NOTED
- ⊕ - CENTERLINE
- AC - ACRES
- LB - LICENSED BUSINESS
- O.R.B. - OFFICIAL RECORD BOOK
- SF - SQUARE FEET



**TRACT "B"**  
**TENET ST. MARY'S PARCEL B REPLAT**  
(PLAT BOOK 112, PAGES 92-94)

**TRACT "B"**  
**C.A.R.P. - PLAT 1**  
(PLAT BOOK 71, PAGES 100-101)

**PARCEL A**  
213,009 SF  
4.890 AC

**54TH STREET EXTENSION**  
50' RIGHT-OF-WAY  
(O.R.B. 722, PAGE 57)