

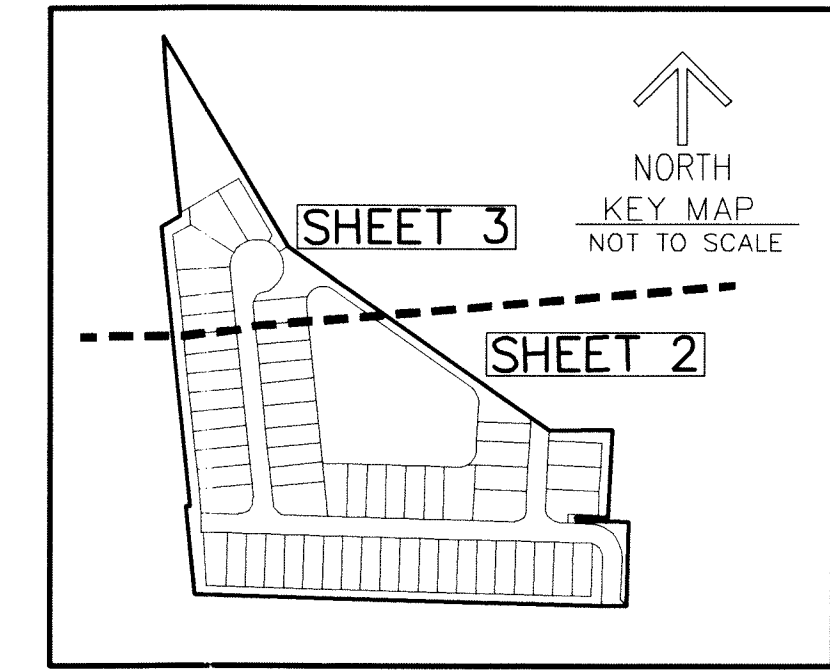
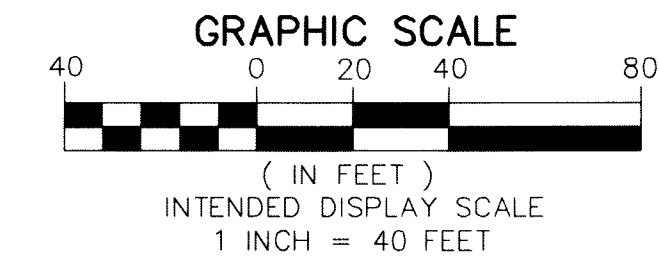
170

# LAKE COVE OF LAKE WORTH

BEING A REPLAT OF A PORTION OF LOT 7, BLOCK K, AMENDED PLAT OF BLOCK K, L, M OF LAKE WORTH HEIGHTS, ACCORDING TO THE PLAT THEREOF, RECORDED IN PLAT BOOK 8, PAGE 6 ALL OF THE PUBLIC RECORDS OF PALM BEACH COUNTY, FLORIDA AND TOGETHER WITH A PARCEL OF RECLAIMED LAND ADJOINING BLOCK K, LAKE WORTH HEIGHTS SUBDIVISION, LYING IN SECTION 16, TOWNSHIP 44 SOUTH, RANGE 43 EAST, CITY OF LAKE WORTH, PALM BEACH COUNTY, FLORIDA.

THIS INSTRUMENT PREPARED BY  
DAVID P. LINDLEY  
OF  
**CAULFIELD and WHEELER, INC.**  
SURVEYORS - ENGINEERS - PLANNERS  
7900 GLADES ROAD, SUITE 100  
BOCA RATON, FLORIDA 33434  
OFFICE (561)392-1991 FAX (561)750-1452  
CERTIFICATE OF AUTHORIZATION NO. LB 3591  
SEPTEMBER - 2017

MATCH LINE SHEET 3 OF 3

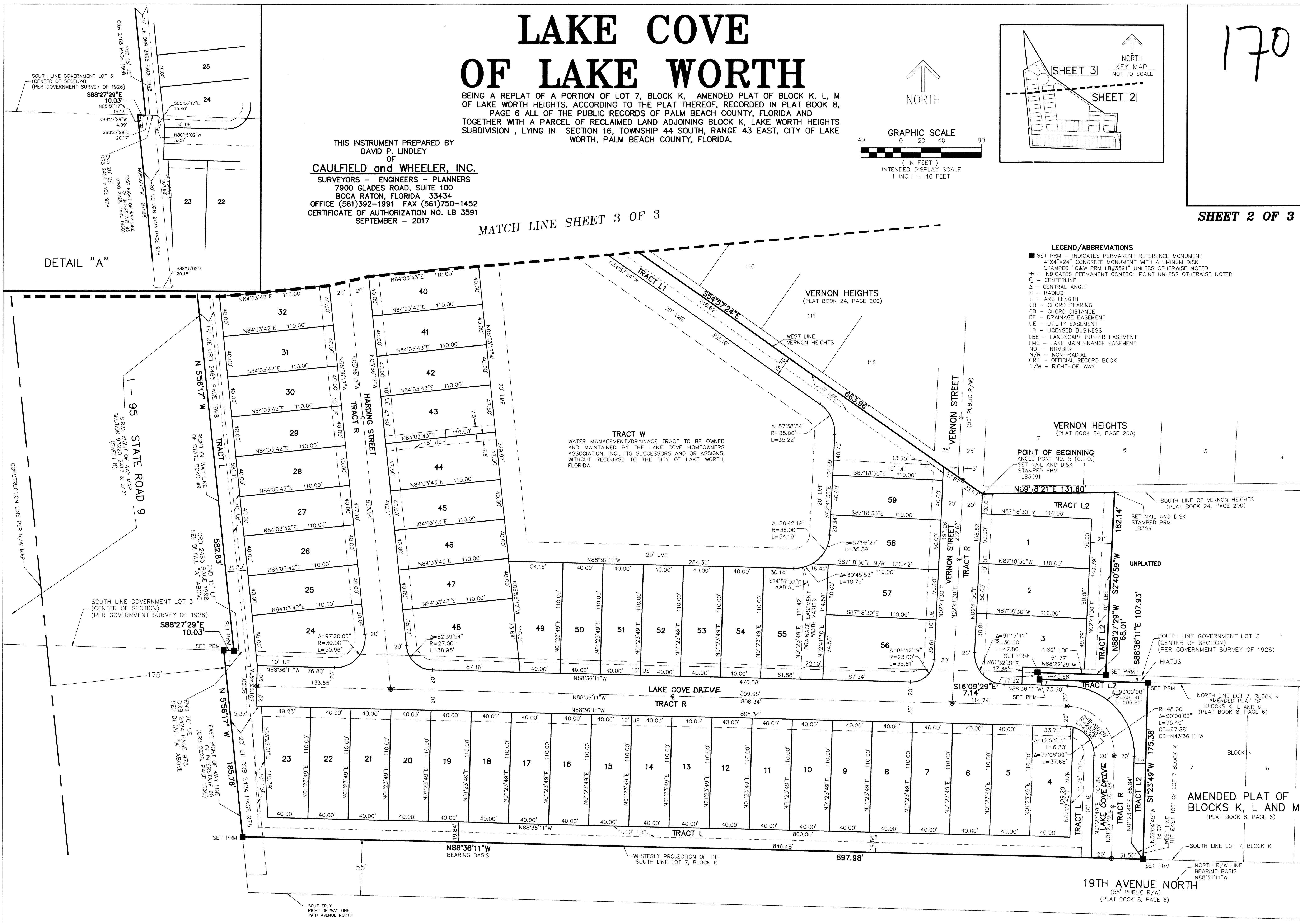


SHEET 2 OF 3

DETAIL "A"

### LEGEND/ABBREVIATIONS

- SET PRM - INDICATES PERMANENT REFERENCE MONUMENT
- 4"x4"x24" CONCRETE MONUMENT WITH ALUMINUM DISK
- STAMPED "C&W PRM LB#3591" UNLESS OTHERWISE NOTED
- - INDICATES PERMANENT CONTROL POINT UNLESS OTHERWISE NOTED
- ℄ - CENTRAL LINE
- ∠ - CENTRAL ANGLE
- R - RADIUS
- L - ARC LENGTH
- CB - CHORD BEARING
- CD - CHORD DISTANCE
- DE - DRAINAGE EASEMENT
- LE - UTILITY EASEMENT
- LB - LICENSED BUSINESS
- LBE - LANDSCAPE BUFFER EASEMENT
- LME - LAKE MAINTENANCE EASEMENT
- NO. - NUMBER
- N/R - NON-RADIAL
- CRB - OFFICIAL RECORD BOOK
- I/W - RIGHT-OF-WAY



19TH AVENUE NORTH  
(55' PUBLIC R/W)  
(PLAT BOOK 8, PAGE 6)