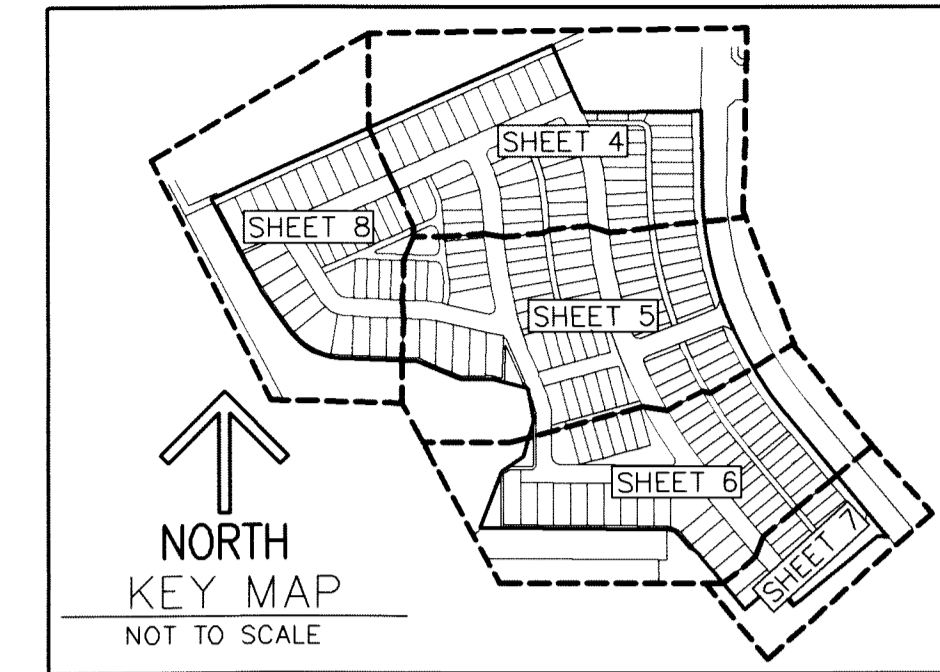


THIS INSTRUMENT PREPARED BY
 DAVID P. LINDLEY
 OF
CAULFIELD and WHEELER, INC.
 SURVEYORS - ENGINEERS - PLANNERS
 7900 GLADES ROAD, SUITE 100
 BOCA RATON, FLORIDA 33434 - (561)392-1991
 CERTIFICATE OF AUTHORIZATION NO. LB3591
 DECEMBER - 2017

ALTON NEIGHBORHOOD 3

BEING A REPLAT OF ALL OF TRACT "E" AND A PORTION OF TRACT "F", ALTON PCD-TRACTS DEF, AS RECORDED IN PLAT BOOK 124, PAGES 156 THROUGH 159,
 TOGETHER WITH A PORTION OF TRACT "O-10", ALTON PCD, AS RECORDED IN PLAT BOOK 118, PAGES 197 THROUGH 206,
 BOTH OF PUBLIC RECORDS OF PALM BEACH COUNTY, FLORIDA, LYING IN SECTIONS 26 AND 35, TOWNSHIP 41 SOUTH, RANGE 42 EAST,
 CITY OF PALM BEACH GARDENS, PALM BEACH COUNTY, FLORIDA

181



SHEET 3 OF 8

NORTHERN PALM BEACH COUNTY IMPROVEMENT DISTRICT
 UNIT OF DEVELOPMENT NO. 2C
 LAND USE CLASSIFICATIONS
 SINGLE FAMILY RESIDENTIAL - SFZ

TOTAL ACREAGE OF THIS PLAT - 1,911,429 SQUARE FEET/43.880 ACRES
 ALL PARCELS SHOWN HEREON ARE DESIGNATED RESIDENTIAL PARCEL CODE: PC

AREA TABLE				AREA TABLE			
LOT	SQUARE FEET	ACRES	CLASSIFICATION	LOT	SQUARE FEET	ACRES	CLASSIFICATION
1	6,006	0.138	SFZ	101	7,700	0.177	SFZ
2	5,393	0.124	SFZ	102	9,793	0.225	SFZ
3	5,360	0.123	SFZ	103	7,708	0.177	SFZ
4	5,360	0.123	SFZ	104	8,319	0.191	SFZ
5	5,360	0.123	SFZ	105	8,867	0.204	SFZ
6	5,360	0.123	SFZ	106	8,440	0.194	SFZ
7	5,656	0.130	SFZ	107	7,742	0.178	SFZ
8	5,609	0.129	SFZ	108	7,152	0.164	SFZ
9	5,597	0.128	SFZ	109	7,150	0.164	SFZ
10	5,620	0.129	SFZ	110	7,150	0.164	SFZ
11	5,620	0.129	SFZ	111	7,150	0.164	SFZ
12	5,620	0.129	SFZ	112	8,142	0.187	SFZ
13	5,620	0.129	SFZ	113	12,984	0.298	SFZ
14	5,620	0.129	SFZ	114	7,600	0.174	SFZ
15	5,620	0.129	SFZ	115	7,796	0.179	SFZ
16	5,922	0.136	SFZ	116	7,874	0.181	SFZ
17	5,652	0.130	SFZ	117	7,799	0.179	SFZ
18	5,431	0.125	SFZ	118	7,943	0.182	SFZ
19	5,431	0.125	SFZ	119	9,776	0.224	SFZ
20	5,431	0.125	SFZ	120	7,700	0.177	SFZ
21	5,431	0.125	SFZ	121	7,700	0.177	SFZ
22	5,431	0.125	SFZ	122	7,700	0.177	SFZ
23	5,431	0.125	SFZ	123	7,700	0.177	SFZ
24	5,431	0.125	SFZ	124	7,700	0.177	SFZ
25	5,450	0.125	SFZ	125	7,700	0.177	SFZ
26	5,319	0.122	SFZ	126	7,700	0.177	SFZ
27	5,320	0.122	SFZ	127	7,700	0.177	SFZ
28	5,650	0.130	SFZ	128	7,700	0.177	SFZ
29	5,925	0.136	SFZ	129	7,700	0.177	SFZ
30	5,838	0.134	SFZ	130	7,700	0.177	SFZ
31	6,264	0.144	SFZ	131	7,700	0.177	SFZ
32	6,541	0.150	SFZ	132	7,700	0.177	SFZ
33	7,700	0.177	SFZ	133	7,700	0.177	SFZ
34	7,700	0.177	SFZ	134	6,583	0.151	SFZ
35	7,700	0.177	SFZ	135	6,276	0.144	SFZ
36	7,700	0.177	SFZ	136	6,669	0.153	SFZ
37	7,700	0.177	SFZ	137	5,398	0.124	SFZ
38	7,700	0.177	SFZ	138	5,428	0.125	SFZ
39	7,700	0.177	SFZ	139	5,428	0.125	SFZ
40	6,502	0.149	SFZ	140	5,398	0.124	SFZ
41	5,549	0.127	SFZ	141	5,398	0.124	SFZ
42	6,414	0.147	SFZ	142	5,447	0.125	SFZ
43	6,414	0.147	SFZ	143	9,703	0.223	SFZ
44	5,440	0.125	SFZ	144	6,708	0.154	SFZ
45	5,408	0.124	SFZ	145	5,200	0.119	SFZ
46	5,408	0.124	SFZ	146	5,200	0.119	SFZ
47	5,408	0.124	SFZ	147	5,200	0.119	SFZ
48	5,408	0.124	SFZ	148	5,200	0.119	SFZ
49	5,408	0.124	SFZ	149	5,200	0.119	SFZ
50	5,408	0.124	SFZ	150	5,187	0.119	SFZ
51	5,408	0.124	SFZ	151	5,200	0.119	SFZ
52	5,408	0.124	SFZ	152	5,200	0.119	SFZ
53	6,705	0.154	SFZ	153	5,200	0.119	SFZ
54	6,502	0.149	SFZ	154	5,200	0.119	SFZ
55	5,419	0.124	SFZ	155	5,200	0.119	SFZ
56	5,949	0.137	SFZ	156	5,200	0.119	SFZ
57	5,949	0.137	SFZ	157	5,200	0.119	SFZ
58	5,949	0.137	SFZ	158	5,200	0.119	SFZ
59	5,750	0.132	SFZ	159	5,200	0.119	SFZ
60	5,433	0.125	SFZ	160	7,480	0.172	SFZ
61	5,433	0.125	SFZ	161	5,596	0.128	SFZ
62	5,433	0.125	SFZ	162	5,607	0.129	SFZ
63	5,433	0.125	SFZ	163	5,606	0.129	SFZ
64	6,541	0.150	SFZ	164	5,607	0.129	SFZ
65	6,112	0.140	SFZ	165	5,606	0.129	SFZ
66	6,112	0.140	SFZ	166	5,606	0.129	SFZ
67	7,415	0.170	SFZ	167	5,606	0.129	SFZ
68	5,200	0.119	SFZ	168	5,607	0.129	SFZ
69	5,200	0.119	SFZ	169	5,556	0.128	SFZ
70	5,200	0.119	SFZ	170	5,360	0.123	SFZ
71	5,200	0.119	SFZ	171	5,360	0.123	SFZ
72	5,200	0.119	SFZ	172	5,360	0.123	SFZ
73	7,533	0.173	SFZ	173	5,360	0.123	SFZ
74	7,008	0.161	SFZ	174	5,360	0.123	SFZ
75	5,200	0.119	SFZ	175	5,360	0.123	SFZ
76	5,200	0.119	SFZ	176	5,360	0.123	SFZ
77	5,200	0.119	SFZ	177	5,360	0.123	SFZ
78	5,200	0.119	SFZ	178	5,360	0.123	SFZ
79	5,200	0.119	SFZ	179	5,360	0.123	SFZ
80	5,200	0.119	SFZ	180	5,240	0.120	SFZ
81	5,200	0.119	SFZ	181	5,240	0.120	SFZ
82	5,200	0.119	SFZ	182	5,240	0.120	SFZ
83	5,200	0.119	SFZ	183	5,240	0.120	SFZ
84	5,200	0.119	SFZ	184	5,240	0.120	SFZ
85	5,200	0.119	SFZ	185	5,240	0.120	SFZ
86	7,700	0.177	SFZ	186	5,240	0.120	SFZ
87	7,700	0.177	SFZ	187	5,240	0.120	SFZ
88	7,700	0.177	SFZ	188	5,240	0.120	SFZ
89	7,700	0.177	SFZ	189	5,240	0.120	SFZ
90	7,700	0.177	SFZ	190	6,087	0.140	SFZ
91	7,700	0.177	SFZ	191	5,450	0.125	SFZ
92	14,977	0.344	SFZ	192	5,450	0.125	SFZ
93	7,701	0.177	SFZ	193	5,450	0.125	SFZ
94	7,700	0.177	SFZ	194	5,450	0.125	SFZ
95	7,700	0.177	SFZ	195	5,450	0.125	SFZ
96	7,700	0.177	SFZ	196	5,450	0.125	SFZ
97	7,700	0.177	SFZ	197	5,449	0.125	SFZ
98	7,700	0.177	SFZ	198	5,450	0.125	SFZ
99	7,700	0.177	SFZ	199	5,591	0.131	SFZ
100	7,700	0.177	SFZ	TOTAL	1,248,041	28.651	

AREAS OF ROAD TRACTS

TRACT	SQUARE FEET	ACRES
R	369,938	8.493
A1	16,950	0.389
A2	17,460	0.401
A3	18,304	0.420
A4	22,274	0.511
A5	6,099	0.140
TOTAL	451,025	10.354

AREAS OF OPEN SPACE TRACTS

TRACT	SQUARE FEET	ACRES
L1	2,534	0.058
L2	2,540	0.058
L3	1,965	0.045
L4	2,010	0.046
L5	1,718	0.039
L6	1,914	0.044
L7	1,914	0.044
L8	2,011	0.046
L9	2,448	0.056
L10	1,597	0.037
L11	1,965	0.045
L12	11,889	0.274
L13	15,301	0.351
L14	700	0.016
L15	2,756	0.063
L16	12,147	0.279
L17	1,269	0.029
L18	1,199	0.028
CP	3,734	0.086
CU1	24,990	0.574
CU2	7,956	0.183
CU3	19,468	0.447
TOTAL	124,025	2.847

AREAS OF ROADWAY BUFFER TRACTS

TRACT	SQUARE FEET	ACRES
B1	23,274	0.534
B2	19,306	0.443
B3	30,829	0.708
TOTAL	73,409	1.685

AREAS OF UPLAND PRESERVE TRACTS

TRACT	SQUARE FEET	ACRES
P1	6,221	0.143
P2	3,827	0.088
P3	3,985	0.091
TOTAL	14,033	0.322

AREA OF WATER MANAGEMENT TRACT

TRACT	SQUARE FEET	ACRES
LM	896	0.021
TOTAL	896	0.021