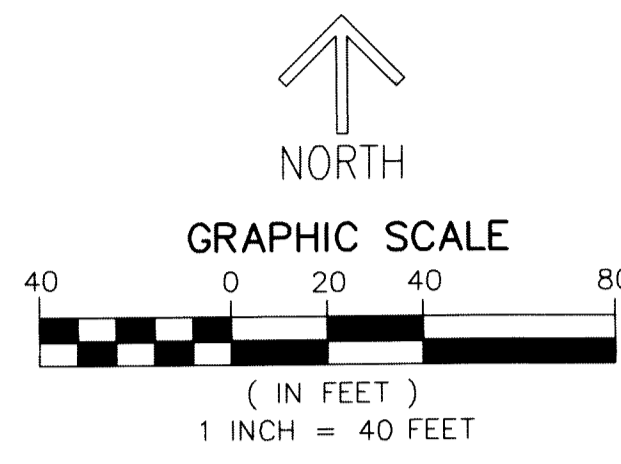


THIS INSTRUMENT PREPARED BY
DAVID P. LINDLEY
OF
CAULFIELD and WHEELER, INC.
SURVEYORS - ENGINEERS - PLANNERS
7900 GLADES ROAD, SUITE 100
BOCA RATON, FLORIDA 33434 - (561)392-1991
CERTIFICATE OF AUTHORIZATION NO. LB3591
DECEMBER - 2017

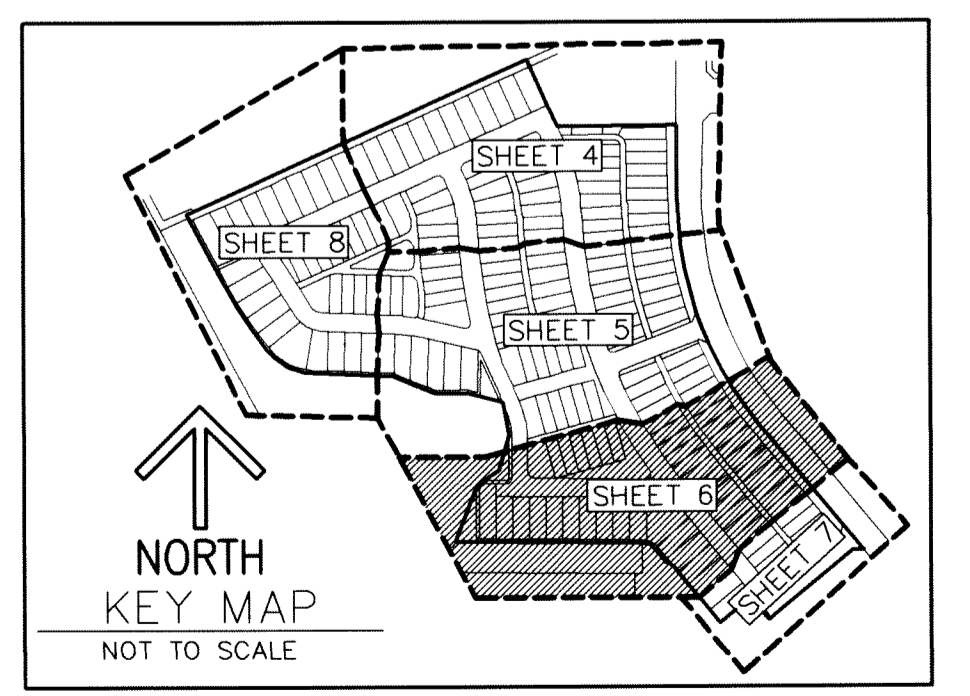
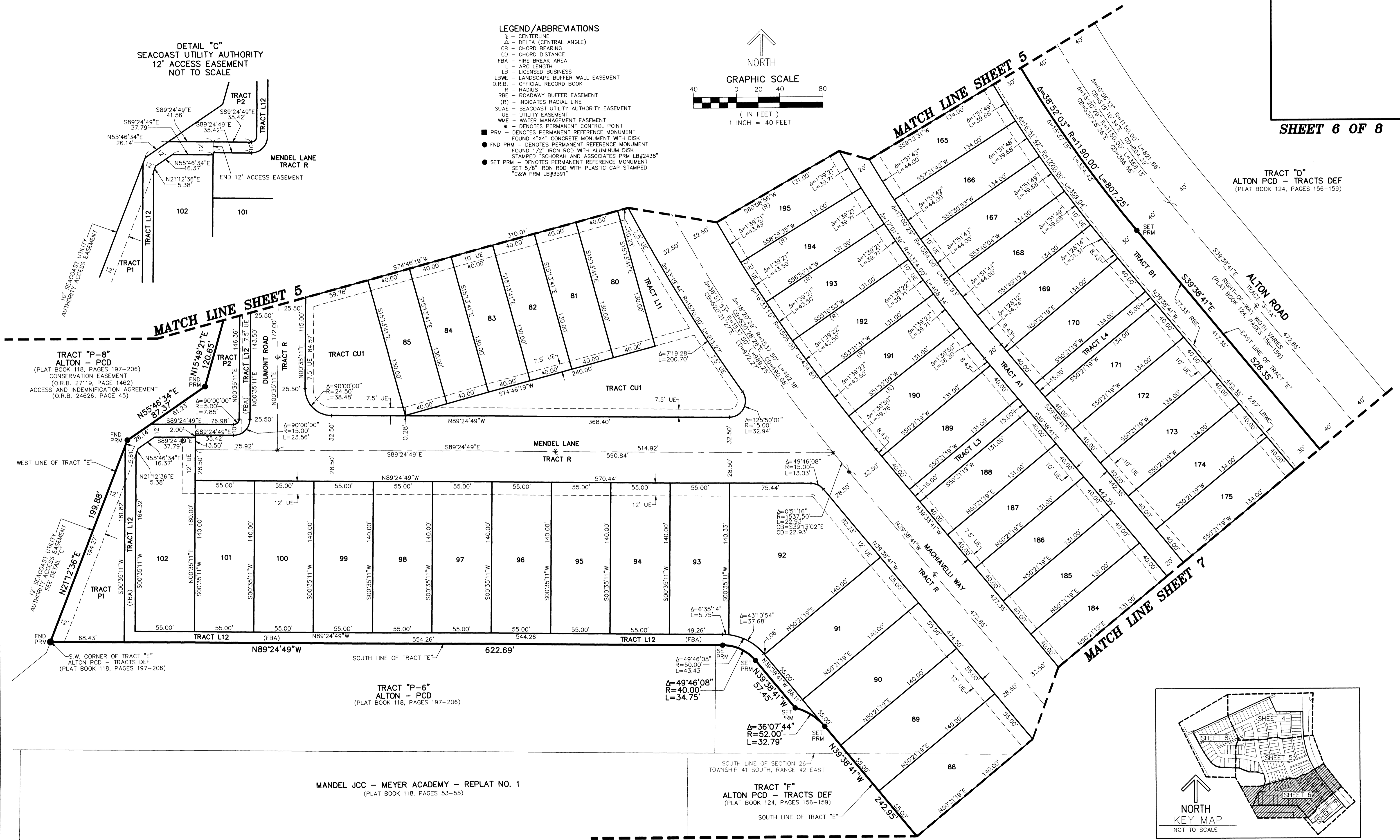
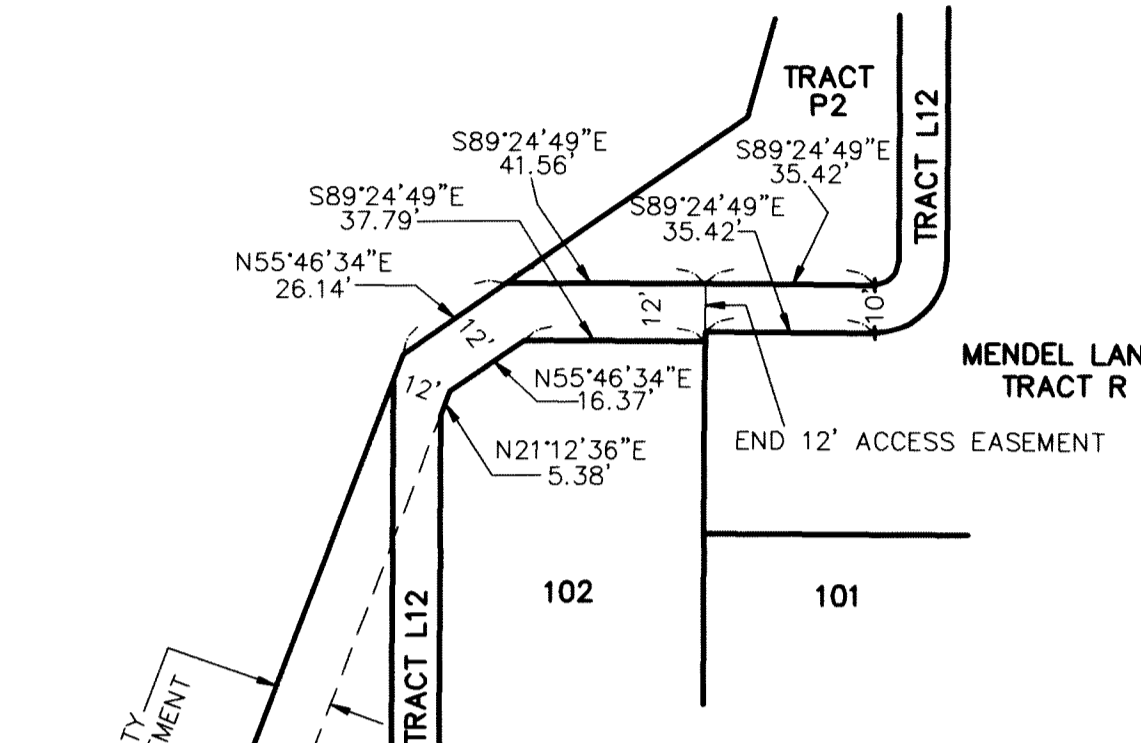
ALTON NEIGHBORHOOD 3

BEING A REPLAT OF ALL OF TRACT "E" AND A PORTION OF TRACT "F", ALTON PCD-TRACTS DEF, AS RECORDED IN PLAT BOOK 124, PAGES 156 THROUGH 159,
TOGETHER WITH A PORTION OF TRACT "O-10", ALTON PCD, AS RECORDED IN PLAT BOOK 118, PAGES 197 THROUGH 206,
BOTH OF PUBLIC RECORDS OF PALM BEACH COUNTY, FLORIDA, LYING IN SECTIONS 26 AND 35, TOWNSHIP 41 SOUTH, RANGE 42 EAST,
CITY OF PALM BEACH GARDENS, PALM BEACH COUNTY, FLORIDA

- LEGEND/ABBREVIATIONS**
- CL - CENTERLINE
 - Δ - DELTA (CENTRAL ANGLE)
 - CB - CHORD BEARING
 - CD - CHORD DISTANCE
 - FBA - FIRE BREAK AREA
 - ARL - ARC LENGTH
 - LB - LICENSED BUSINESS
 - LBWE - LANDSCAPE BUFFER WALL EASEMENT
 - O.R.B. - OFFICIAL RECORD BOOK
 - R - RADIUS
 - RBE - ROADWAY BUFFER EASEMENT
 - (R) - INDICATES RADIAL LINE
 - SUA/E - SEACOAST UTILITY AUTHORITY EASEMENT/UTILITY EASEMENT
 - WME - WATER MANAGEMENT EASEMENT
 - DP - DENOTES PERMANENT CONTROL POINT
 - PRM - DENOTES PERMANENT REFERENCE MONUMENT FOUND 4"x4" CONCRETE MONUMENT WITH DISK
 - FND PRM - DENOTES PERMANENT REFERENCE MONUMENT FOUND 1/2" IRON ROD WITH ALUMINUM DISK STAMPED "SCHORAH AND ASSOCIATES PRM LB#2438"
 - SET PRM - DENOTES PERMANENT REFERENCE MONUMENT SET 5/8" IRON ROD WITH PLASTIC CAP STAMPED "C&W PRM LB#3591"



DETAIL "C"
SEACOAST UTILITY AUTHORITY
12' ACCESS EASEMENT
NOT TO SCALE



TRACT "P-6"
ALTON PCD - TRACTS DEF
(PLAT BOOK 118, PAGES 197-206)

MANDEL JCC - MEYER ACADEMY - REPLAT NO. 1
(PLAT BOOK 118, PAGES 53-55)

TRACT "F"
ALTON PCD - TRACTS DEF
(PLAT BOOK 124, PAGES 156-159)

TRACT "D"
ALTON PCD - TRACTS DEF
(PLAT BOOK 124, PAGES 156-159)