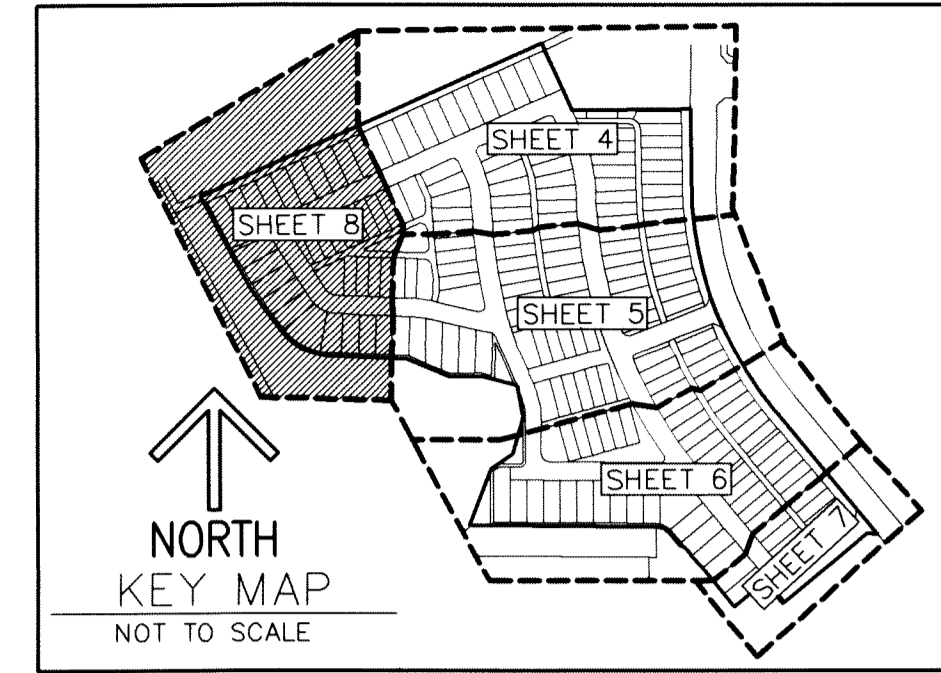


THIS INSTRUMENT PREPARED BY  
 DAVID P. LINDLEY  
 OF  
**CAULFIELD and WHEELER, INC.**  
 SURVEYORS - ENGINEERS - PLANNERS  
 7900 GLADES ROAD, SUITE 100  
 BOCA RATON, FLORIDA 33434 - (561)392-1991  
 CERTIFICATE OF AUTHORIZATION NO. LB3591  
 DECEMBER - 2017

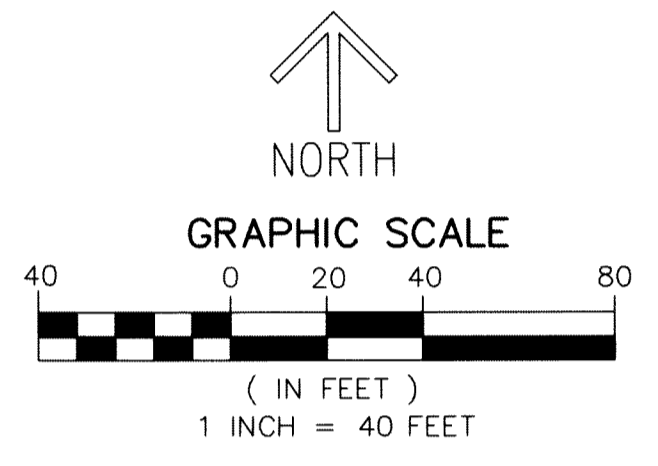
# ALTON NEIGHBORHOOD 3

BEING A REPLAT OF ALL OF TRACT "E" AND A PORTION OF TRACT "F", ALTON PCD-TRACTS DEF, AS RECORDED IN PLAT BOOK 124, PAGES 156 THROUGH 159,  
 TOGETHER WITH A PORTION OF TRACT "O-10", ALTON PCD, AS RECORDED IN PLAT BOOK 118, PAGES 197 THROUGH 206,  
 BOTH OF PUBLIC RECORDS OF PALM BEACH COUNTY, FLORIDA, LYING IN SECTIONS 26 AND 35, TOWNSHIP 41 SOUTH, RANGE 42 EAST,  
 CITY OF PALM BEACH GARDENS, PALM BEACH COUNTY, FLORIDA

186



SHEET 8 OF 8



- LEGEND/ABBREVIATIONS**
- CL - CENTERLINE
  - Δ - DELTA (CENTRAL ANGLE)
  - CB - CHORD BEARING
  - CD - CHORD DISTANCE
  - FBA - FIRE BREAK AREA
  - ARC - ARC LENGTH
  - LB - LICENSED BUSINESS
  - LBW - LANDSCAPE BUFFER WALL EASEMENT
  - O.R.B. - OFFICIAL RECORD BOOK
  - R - RADIUS
  - RBE - ROADWAY BUFFER EASEMENT
  - (R) - INDICATES RADIAL LINE
  - SUAE - SEACOAST UTILITY AUTHORITY EASEMENT
  - UE - UTILITY EASEMENT
  - WME - WATER MANAGEMENT EASEMENT
  - - DENOTES PERMANENT CONTROL POINT
  - - DENOTES PERMANENT REFERENCE MONUMENT FOUND 4"x4" CONCRETE MONUMENT WITH DISK
  - - DENOTES PERMANENT REFERENCE MONUMENT FOUND 1/2" IRON ROD WITH ALUMINUM DISK STAMPED "SCHORAH AND ASSOCIATES PRM LB#2438"
  - - SET PRM - DENOTES PERMANENT REFERENCE MONUMENT SET 5/8" IRON ROD WITH PLASTIC CAP STAMPED "C&W PRM LB#3591"