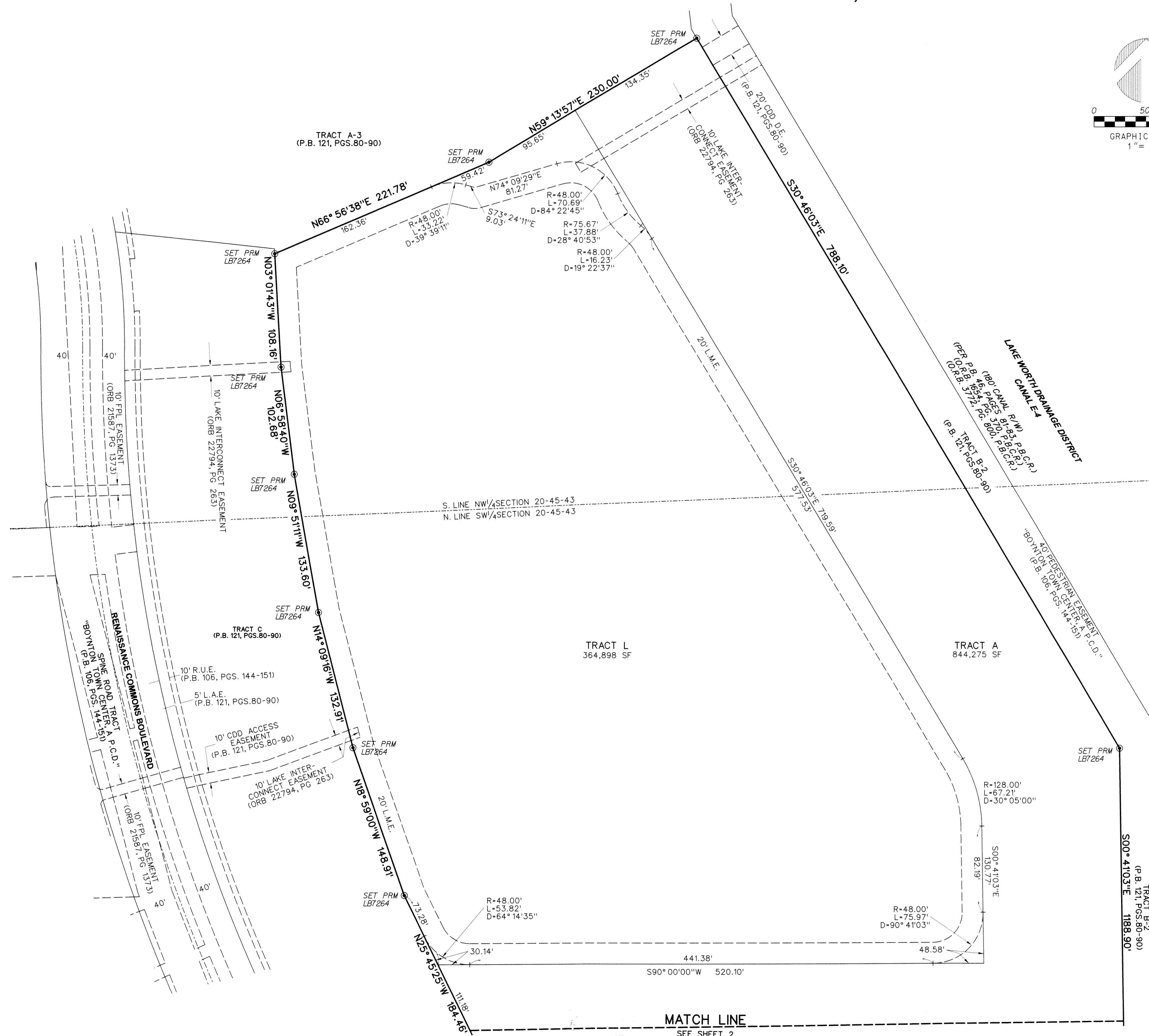
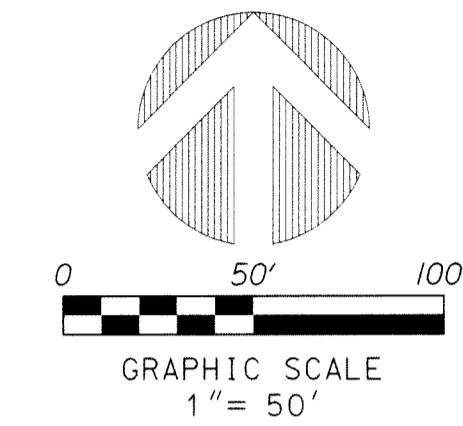




SURVEYING & MAPPING
Prepared by: Jeff S. Hodapp, P.S.M.
Certificate of Authorization No. LB7264
947 Clint Moore Road
Boca Raton, Florida 33487
Tel: (561) 241-9988
Fax: (561) 241-5182

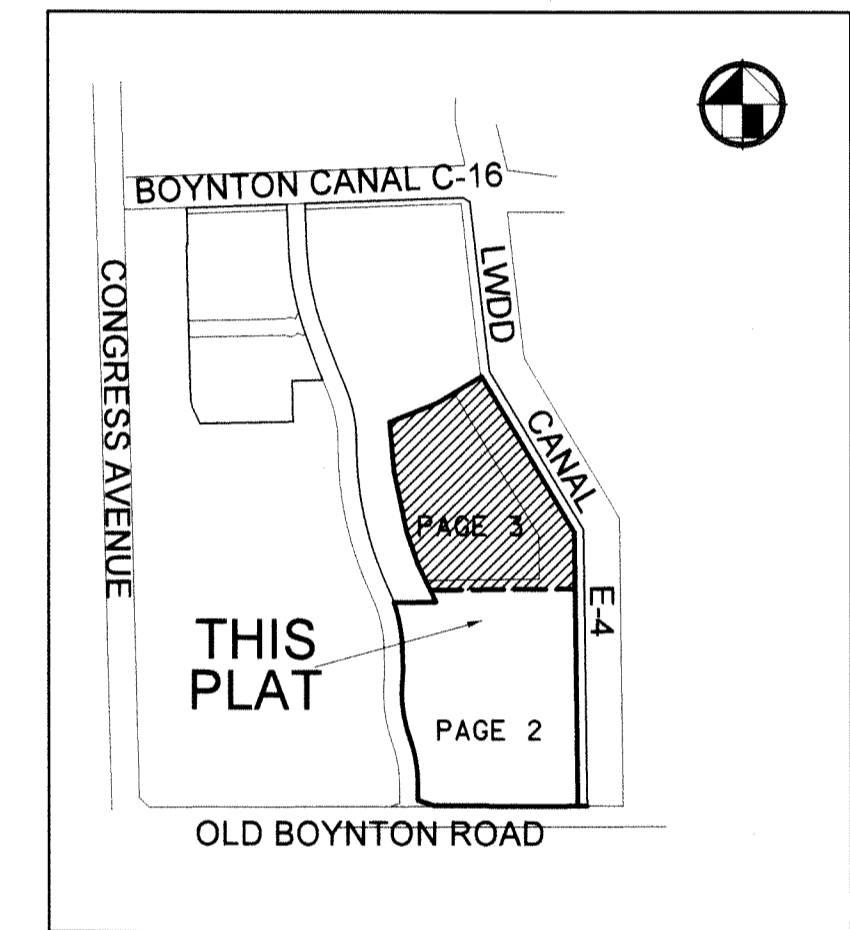
CORTINA PUD REPLAT THREE

A REPLAT OF A PORTION OF "CORTINA PUD REPLAT TWO" (P.B. 121, PGS. 80-90, P.B.C.R.)
SECTION 20, TOWNSHIP 45 SOUTH, RANGE 43 EAST
CITY OF BOYNTON BEACH, PALM BEACH COUNTY, FLORIDA.
MAY, 2018



TABULAR DATA

TRACT A	844,275 S.F.
TRACT L	364,898 S.F.
TOTAL	1,209,173 S.F.



- LEGEND:**
- ⊙ SET P.R.M. (UNLESS OTHERWISE NOTED)-4" x 4" x 24" CONC. MON. WITH ALUMINUM DISK STAMPED LB7264 CENTERLINE
- ABBREVIATIONS:**
- AC. ACRES
 - CDD COMMUNITY DEVELOPMENT DISTRICT
 - CH CHORD
 - CHB CHORD BEARING
 - CONC. CONCRETE
 - COR. CORNER
 - D DELTA (CENTRAL ANGLE)
 - D.E. DRAINAGE EASEMENT
 - L ARCLength
 - L.A.E. LIMITED ACCESS EASEMENT
 - L.B. LICENSED BUSINESS
 - L.B.E. LANDSCAPE BUFFER EASEMENT
 - L.M.E. LAKE MAINTENANCE EASEMENT
 - L.S. LICENSED SURVEYOR
 - L.S.E. LIGHT STATION EASEMENT
 - L.W.D.D. LAKE WORTH DRAINAGE DISTRICT
 - MON. MONUMENT
 - O.R.B. OFFICIAL RECORDS BOOK
 - N.R. NON-RADIAL
 - P.B.C.R. PALM BEACH COUNTY RECORDS
 - PG. PAGE
 - P.C.P. PERMANENT CONTROL POINT
 - P.L.S. PROFESSIONAL LAND SURVEYOR
 - P.O.B. POINT OF BEGINNING
 - P.O.C. POINT OF COMMENCEMENT
 - P.R.M. PERMANENT REFERENCE MONUMENT
 - P.S.M. PROFESSIONAL SURVEYOR & MAPPER
 - P.U.D. PLANNED UNIT DEVELOPMENT
 - R RADIUS
 - R/W RIGHT-OF-WAY
 - R.U.E. ROAD AND UTILITY EASEMENT
 - SEC. SECTION
 - S.F. SQUARE FEET
 - U.E. UTILITY EASEMENT

MATCH LINE
SEE SHEET 2