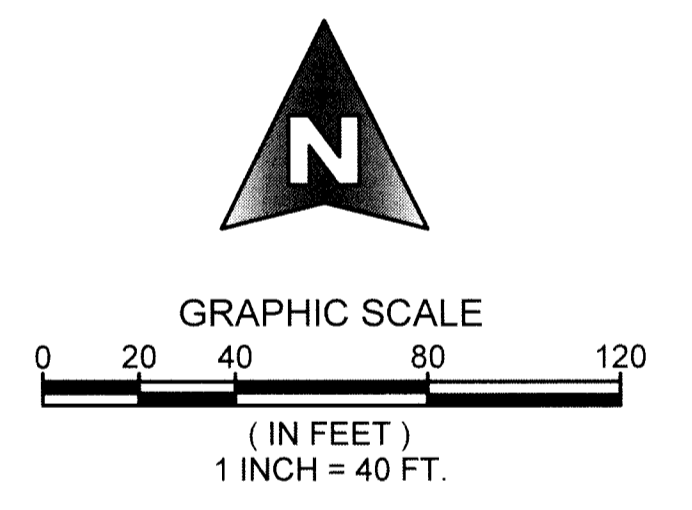
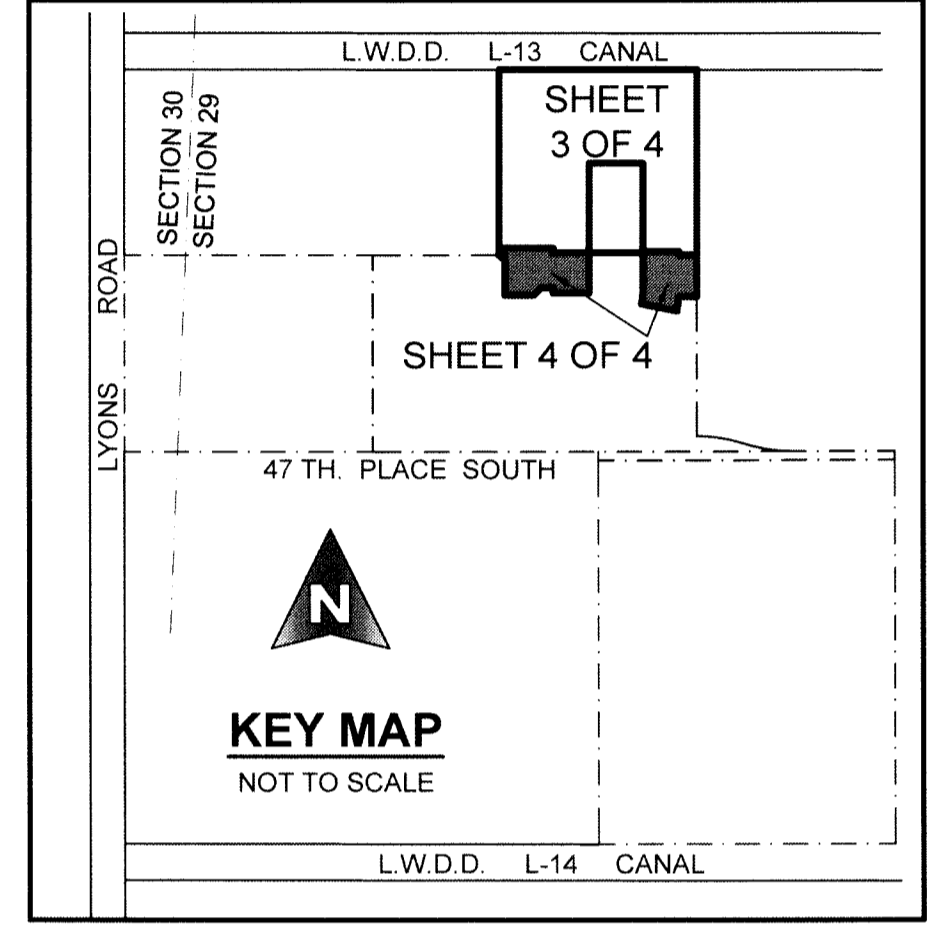
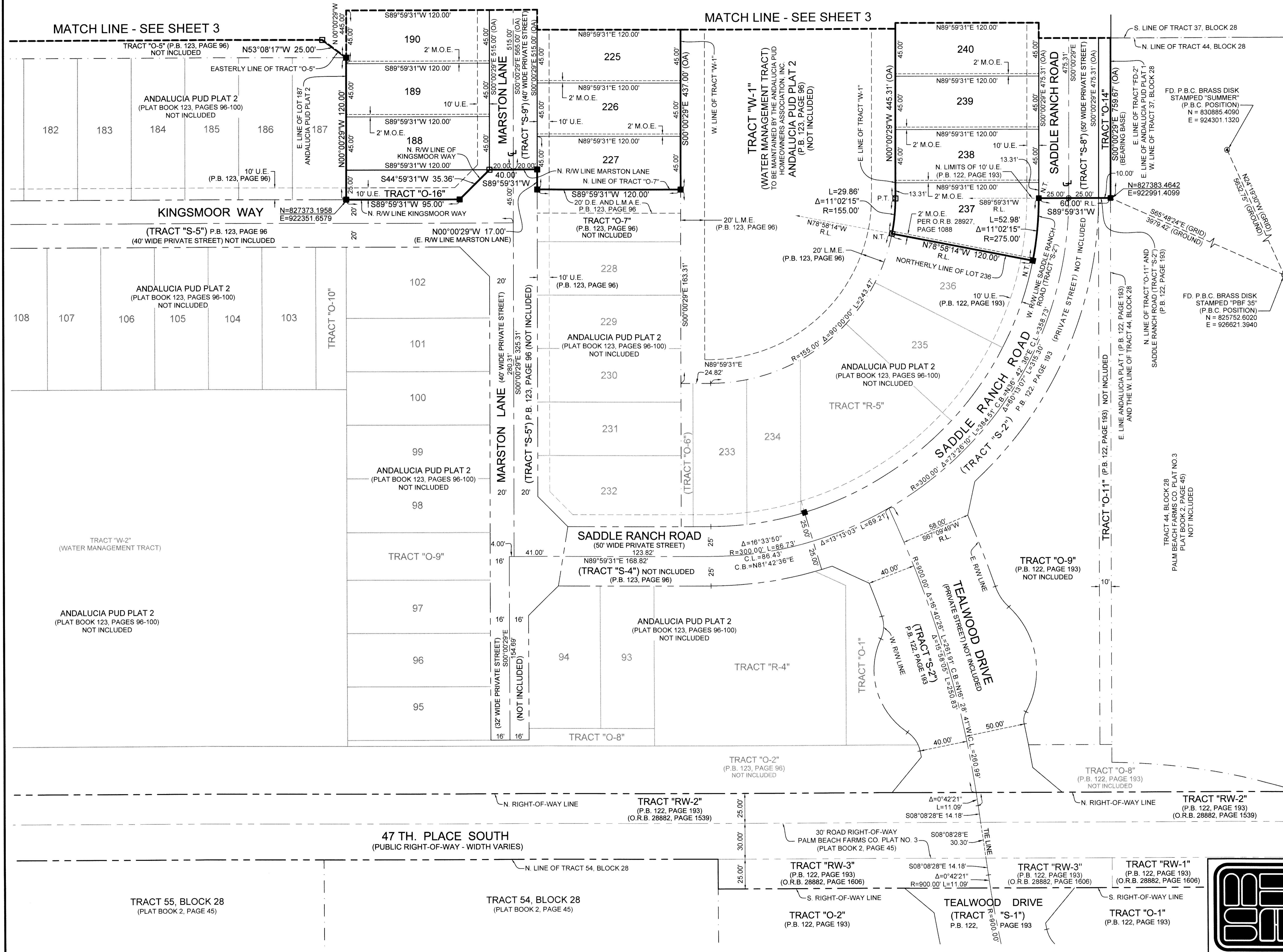


ANDALUCIA PUD PLAT 4

LYING IN SECTION 29, TOWNSHIP 44 SOUTH, RANGE 42 EAST, PALM BEACH COUNTY, FLORIDA,
BEING A REPLAT OF A PORTION OF TRACT "FD-2", ANDALUCIA PUD PLAT 1, AS RECORDED IN PLAT BOOK 122,
PAGES 193 THROUGH 199, INCLUSIVE, PUBLIC RECORDS OF PALM BEACH COUNTY, FLORIDA.

31



COORDINATE NOTE:
STATE PLANE COORDINATES SHOWN ARE GRID DATUM.
NAD 83 1990 ADJUSTMENT, FLORIDA EAST ZONE.
COORDINATE SYSTEM 1983 STATE PLANE, TRANSVERSE
MERCATOR PROJECTION
LINEAR UNIT = US SURVEY FEET
ALL DISTANCES ARE GROUND
SCALE FACTOR = 1.00022328
GROUND DISTANCE X SCALE FACTOR = GRID DISTANCE
S 00°00'29"E (PLAT BEARING) -00°56'20" COUNTER-CLOCKWISE ROTATION
S 00°56'49"E (GRID BEARING) PLAT TO GRID
THE EAST LINE OF ANDALUCIA PUD PLAT 1
(PLAT BOOK 122, PAGES 193-199)

SHEET 4 OF 4

**MICHAEL B. SCHORAH
& ASSOCIATES, INC.**
1850 FOREST HILL BLVD., SUITE 206
WEST PALM BEACH, FLORIDA 33406
EB# 2438 TEL. (561) 968-0080 FAX. (561) 642-9726 LB# 2438

ANDALUCIA PUD PLAT 4